

Approved: Carl Holmes
Date 1-26-93

MINUTES OF THE HOUSE COMMITTEE ON ENERGY AND NATURAL RESOURCES.

The meeting was called to order by Chairperson Carl Holmes at 3:30 p.m. on January 19, 1993 in Room 526-S of the Capitol.

All members were present except: Rep. Lawrence, excused

Committee staff present: Raney Gilliland, Legislative Research Department
Dennis Hodgins, Legislative Research Department
Mary Torrence, Revisor of Statutes
Cindy Garland, Committee Secretary

Conferees appearing before the committee: Robert C. Harder, Secretary
Kansas Department of Health and Environment

Charles F. Jones, Director, Division of Environment
Kansas Department of Health and Environment

Others attending: See attached list

Chairperson Holmes called on Dr. Robert Harder, Secretary, Kansas Department of Health and Environment to give an overview of the agency.

Dr. Robert Harder, Secretary, Kansas Department of Health and Environment presented the Committee Members with a document giving an overview of the Department. Dr. Harder explained the pie charts contained within the document, KDHE - Expenditures by Major Programs for Fiscal Years 1993 and 1994. He also reviewed the charts showing federal funds, fee funds and state general funds for the agency. Dr. Harder briefly touched on the agency goals, key agency activities, priority funding, public expectations and management strategies. (Attachment 1)

Charles F. Jones, Director, Division of Environment, Kansas Department of Health and Environment appeared before the Committee to explain some of the programs within the Division of Environment. The Division of Environment is responsible for the management of water quality, air radiation, solid and hazardous waste and remediation of contamination. Mr. Jones spoke briefly about the Office of Science and Support; Bureau of Air and Radiation; Bureau of Environmental Remediation; Bureau of Waste Management; Bureau of Water; and Bureau of District Operations. (Attachment 2)

Chairperson Holmes opened the floor for questions to Mr. Harder and Mr. Jones. Major concerns voiced during the question and reply session addressed issues such as the closing of solid waste disposal sites in small communities, the process of applications and permits for incinerators, the length of time it is taking to get permits for feedlots and feedlot expansions, the fee lots Kansas is losing to other states due to the delay of issuance of renewal for existing permits and the issuance of new permits, and the operation of the newly-created District Operation offices.

A motion was made by Representative Gatlin and seconded by Representative Rezac, to approve the Committee minutes of January 13, 1993. The motion carried.

The meeting adjourned at 4:50 p.m.

The next meeting is scheduled for January 20, 1993.

GUEST LIST

COMMITTEE: ENERGY & NATURAL RESOURCES

DATE: Apr 19 1993

[illegible]

Kansas Department of Health and Environment



House Energy and Natural Resources Committee

Robert C. Harder, Secretary
January 19, 1993

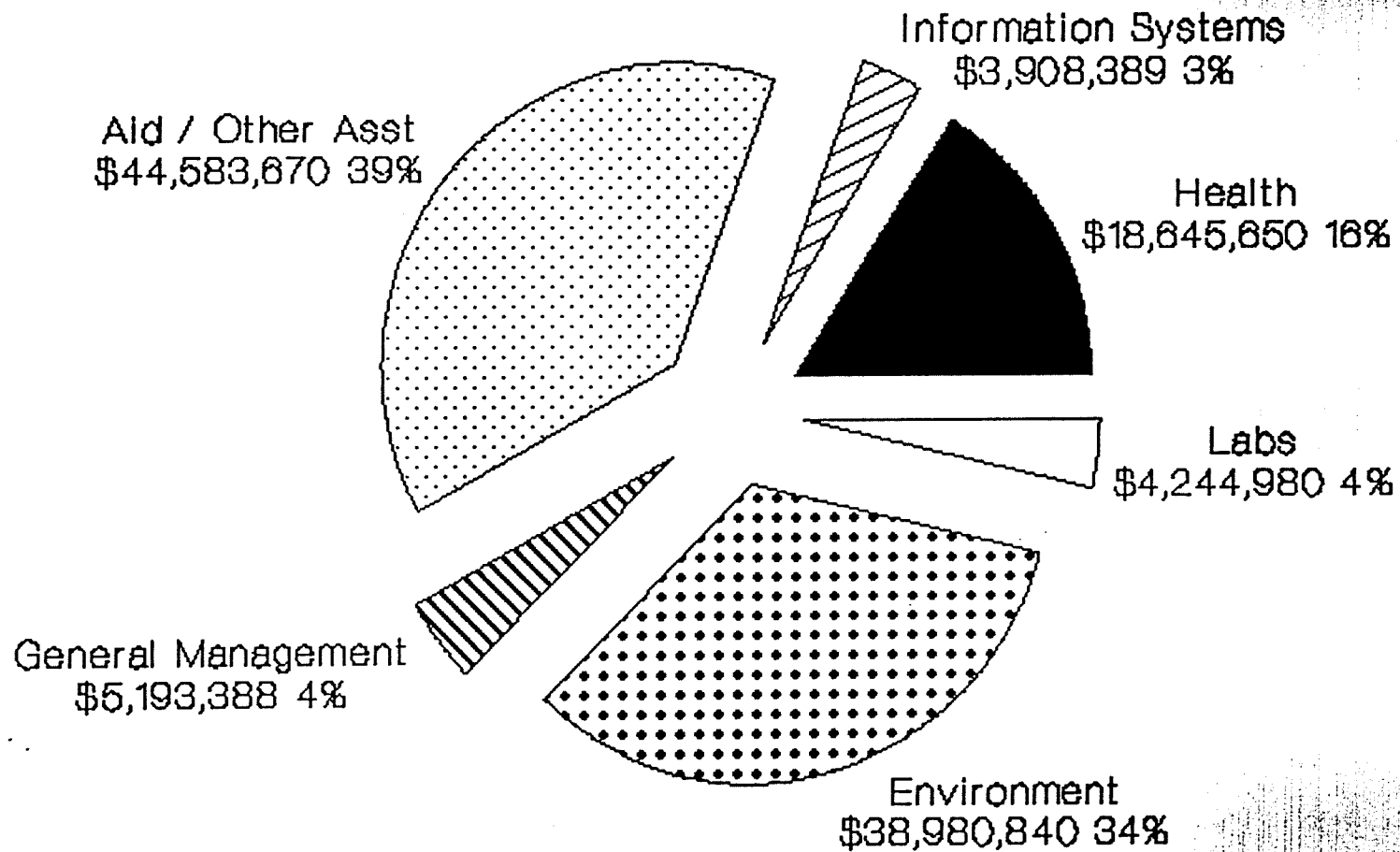
House E & NR 1-19-93
Attachment 1

1) A Brief Overview of KDHE Budget Request for FY 1994

January 19, 1993

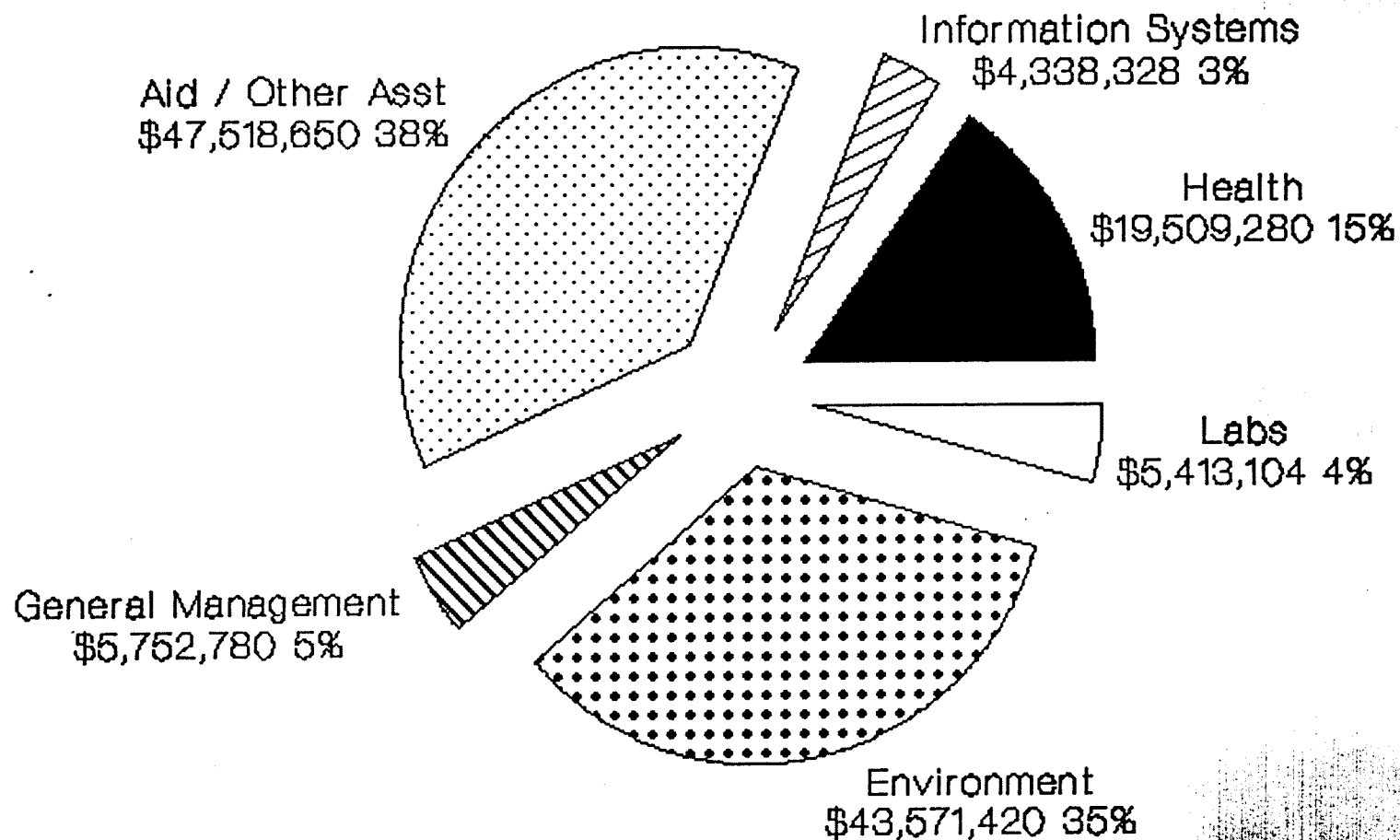
FY 93 K D H E

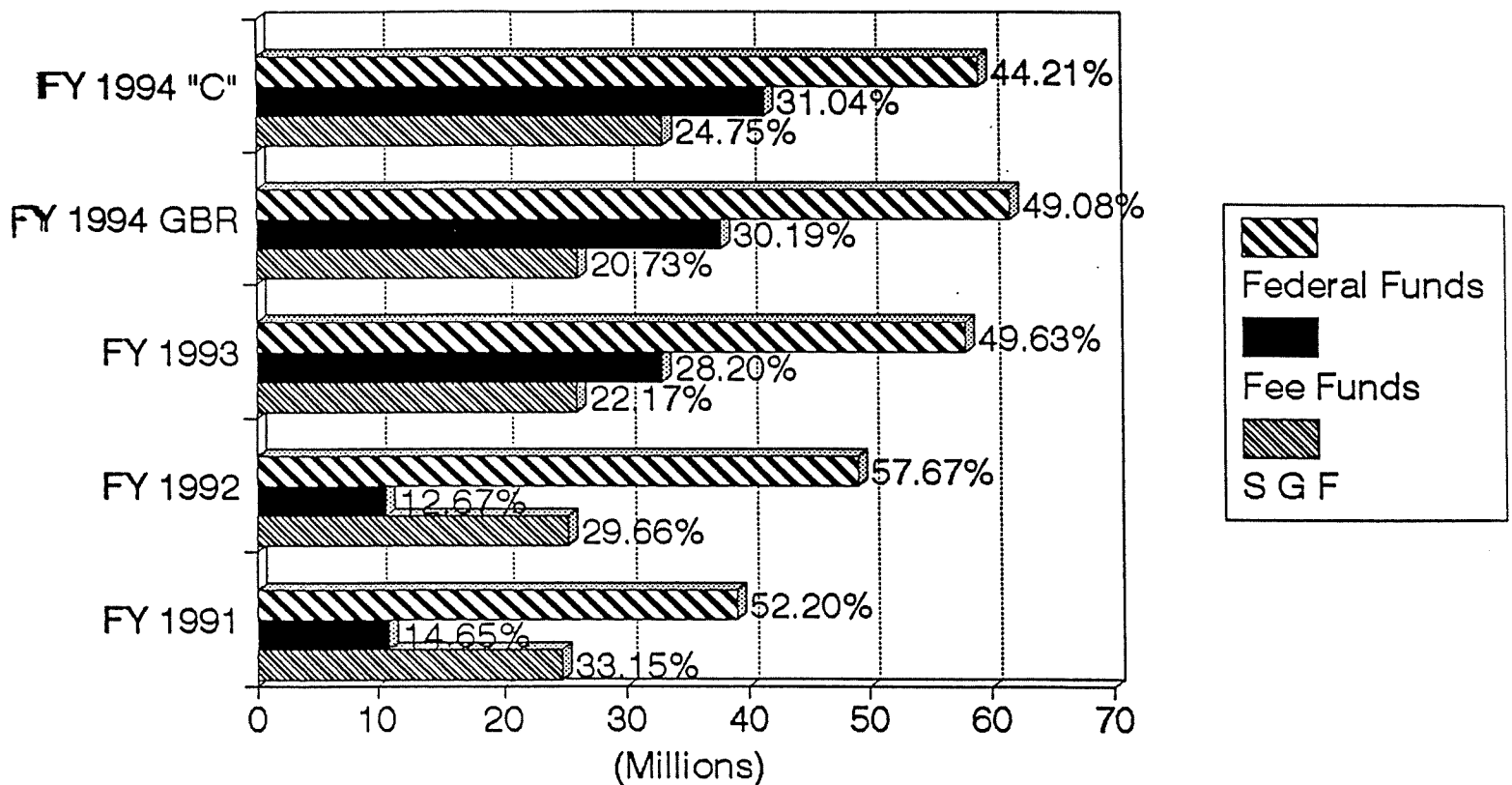
Expenditures by Major Programs



FY 94 G B R for K D H E

Expenditures by Major Programs





KS Dept of Health and Environment Funding Sources

**KANSAS DEPARTMENT OF HEALTH AND ENVIRONMENT
AGENCY SUMMARY OF FISCAL YEAR EXPENDITURES**

Financing	FY 1991 Actuals	FY 1992 Actuals	FY 1993 Approved	FY 1994 GBR	FY 1994 "C" Request
S G F	\$24,754,810	\$25,259,403	\$25,893,398	\$26,040,546	\$33,082,751
% of Total	33.15%	29.66%	22.17%	20.73%	24.75%
State Fees	10,939,390	10,791,131	32,946,229	37,921,129	41,481,663
% of Total	14.65%	12.67%	28.20%	30.19%	31.04%
Federal	38,977,312	49,115,874	57,970,914	61,658,415	59,085,459
% of Total	52.20%	57.67%	49.63%	49.08%	44.21%
TOTAL	\$74,671,512	\$85,166,408	\$116,810,541	\$125,620,090	\$133,649,873
EXPENDITURES					
Salaries	23,352,816	25,403,777	29,569,248	31,683,416	33,797,132
O O E	19,049,046	20,684,397	43,781,377	49,377,033	52,940,277
Aid to Locals	14,010,483	17,632,581	20,139,916	21,239,641	23,566,699
Other Assistance	18,259,167	21,445,653	23,320,000	23,320,000	23,320,000
TOTAL EXPENDITURE	\$74,671,512	\$85,166,408	\$116,810,541	\$125,620,090	\$133,624,108
F T E Positions	723.2	732.5	761.0	766.0	827.5
Special Project Posi	35	56	117 *		114

* Includes the 41 Special Projects Workers approved by the 1992
Legislature for the Public Drinking Water and Solid Waste Projects

11 - Jan - 93

KANSAS DEPARTMENT OF HEALTH & ENVIRONMENT
Expenditure History By Program

12 - Jan - 83

PRG NO	PRG NAME	FY 89	FY 90	FY 91	FY 92	FY 93 GBR	FY 94 GBR	FY 94 'C'
0100	General Management	\$3,729,751	\$4,021,974	\$4,826,862	\$4,846,598	\$5,193,388	5,752,780	\$5,760,955
	Percent Increase / (Decrease)		7.83%	20.01%	0.41%	7.16%	10.77%	10.93%
0200	Information Services	3,422,640	4,522,307	3,526,567	3,868,950	3,908,389	4,338,328	5,008,893
	Percent Increase / (Decrease)		32.13%	-22.02%	9.71%	1.02%	11.00%	28.16%
3010	Aid to Counties - Health	23,266,411	29,121,344	32,020,929	37,013,556	41,751,358	42,484,559	42,582,820
	Percent Increase / (Decrease)		25.16%	9.96%	15.59%	12.80%	1.76%	1.99%
3020	Aid to Counties - Environment	47,651	772,656	1,349,168	1,692,949	4,083,313	5,034,090	5,572,270
	Percent Increase / (Decrease)		1521.49%	74.61%	25.48%	141.20%	23.28%	36.46%
6000	Dir of Div of Health	1,294,897	1,227,169	1,135,930	1,231,464	1,855,866	1,937,233	2,120,308
	Percent Increase / (Decrease)		-5.23%	-7.43%	8.41%	50.70%	4.38%	14.25%
6200	Bureau of Adult & Child Care	3,063,828	4,355,749	4,789,023	5,470,255	6,103,249	6,334,161	6,520,414
	Percent Increase / (Decrease)		42.17%	9.95%	14.22%	11.57%	3.78%	6.84%
6300	Bureau of Environ Health Serv	1,702,067	1,967,730	2,125,174	2,230,208	2,132,759	2,253,675	3,118,915
	Percent Increase / (Decrease)		15.61%	8.00%	4.94%	-4.37%	5.67%	46.24%
6400	Bureau of Disease Control	2,119,501	1,282,485	1,444,913	1,871,475	2,386,167	2,377,218	2,594,020
	Percent Increase / (Decrease)		-39.49%	12.67%	29.52%	27.50%	-0.38%	8.71%
7100	Bureau of Family Health	4,368,321	4,859,504	4,902,035	4,532,118	6,167,611	6,606,996	7,311,224
	Percent Increase / (Decrease)		11.24%	0.88%	-7.55%	36.09%	7.12%	18.54%
7200	Off of Director of Envir	234,754	250,993	227,512	258,576	215,962	252,624	257,405
	Percent Increase / (Decrease)		6.92%	-9.36%	13.65%	-16.48%	16.98%	19.19%
7201	Bureau of Air Quality & Waste Mgn	2,576,912	2,728,216	2,823,500	3,188,751	4,572,394	5,650,281	6,089,215
	Percent Increase / (Decrease)		5.87%	3.49%	12.94%	43.39%	23.57%	33.17%
7300	Bureau of Water	2,220,949	2,421,118	2,998,978	3,830,329	4,549,553	4,702,523	4,776,486
	Percent Increase / (Decrease)		9.01%	23.87%	27.72%	18.78%	3.36%	4.99%
7400	Bureau of Water Quality & Surface Mining	1,765,250	2,292,810	3,040,192	3,306,953	5,061,760	4,933,606	5,504,373
	Percent Increase / (Decrease)		29.89%	32.60%	8.77%	53.06%	-2.53%	8.74%
7500	Bureau of Environmental Remediation	2,174,334	2,637,602	6,050,105	7,816,632	24,581,176	28,032,385	31,019,472
	Percent Increase / (Decrease)		21.31%	129.38%	29.20%	214.47%	14.04%	26.19%
8400	KS Health & Environ Laboratory	2,671,686	2,903,336	3,218,916	3,211,663	4,244,980	4,929,631	5,413,104
	Percent Increase / (Decrease)		8.67%	10.87%	-0.23%	32.17%	16.13%	27.52%
9800	Bond Funds	319,691	659,071	191,708	795,931	2,616	0	0
	Percent Increase / (Decrease)		106.16%	-70.91%	315.18%	-99.67%	-100.00%	-100.00%
	AGENCY TOTALS	54,978,643	66,024,064	74,671,512	85,166,408	116,810,541	125,620,090	133,649,874
	Percent Increase / (Decrease)		20.09%	13.10%	14.05%	37.16%	7.54%	14.42%
	Total F T E s	672.70	709.70	723.20	732.50	761.00	766.00	827.50
	Percent Increase / (Decrease)		5.50%	1.90%	1.29%	3.89%	0.66%	8.74%

AGENCY GOALS

- 2) a) To make KDHE even more responsive and more user friendly to its customers, the citizens of Kansas. This will be accomplished through leadership, example and training.
- b) By 1995, to have every child, ages 0-2, appropriately immunized. To accomplish this goal, the Department is serving as the lead agency to carry out a massive immunization program over the next two (2) years.
- c) To have KDHE viewed as a Leader in the fields of health and environment. To accomplish this goal, the Department staff will be encouraged to be expert in their fields of responsibility and then advocate for those issues.
- d) To provide leadership as it relates to combining health, social services and education to be provided at one location. This goal will be accomplished by staff working closely with the Kansas Commission on Children, Youth and Families, the Corporation for Change, and local communities to provide technical assistance and support as it is appropriate.
- e) To expand the public's concern and interest in relation to healthy lifestyles. To accomplish this goal, the KDHE will actively promote public education to this end.
- f) To ensure appropriate water and air quality and the management of those resources over time. This goal will be accomplished by the staff being actively engaged in the promoting of these issues.
- g) To ensure adequate, professionally trained staff to carry out the work of KDHE. This goal will be accomplished through continuous work with the Governor and the Legislature.

January 19, 1993

1-8

KEY AGENCY ACTIVITIES

- 3) a) Prevention: Immunization; air and water quality control; Healthy Start; licensing
- b) Health Promotion: Healthy lifestyles; no smoking campaigns; media campaigns
- c) Environment Control: Permit granting; waste management; interaction with other agencies

PRIORITY FUNDING

Health

- 1) Immunization - \$2.9 million per KDHE request
- 2) Physician Salaries - \$81,971
- 3) Health Promotion - % Increase over FY 93
 - Office of Government and Community Relations- +2.3%
 - Division of Health, Director - +4.4%

Environment

- 1) Clean Air Act
- 2) Surface Mining SGF Support
- 3) Water Plan money continues FY 93 funding levels:
 - \$1.37 million for Local Environment Protection Grant Program (LEPP)
 - \$150,000 for Kansas Rural Water Association
 - \$150,000 for Hazardous Waste Collections Grants

January 19, 1993

4) Public Expectations:

- a) To promote and enhance safe health and a safe environment. To protect the public from abusive behaviors, questionable practices, and promote good health practices**
- b) To ensure disease control and to promote safety**
- c) To capture the imagination of the general public in regard to health and environment issues.**

Management Strategies: (Not in priority order)

- a) KDHE Open Meetings**
- b) Internal and external review committees**
- c) Secretary's Forums**
- d) User friendly**
- e) Training**
- f) Example**
- g) Openness**
- h) Risk-taking**
- i) Collaboration, internal and external**

January 19, 1993

Programs and Services



Kansas Department of Health and Environment

Joan Finney – Governor
Robert C. Harder – Secretary

Prepared by Office of Government and Community Relations
Pamela Johnson Betts – Director

1-11

Preface	History	1	Bureau of Disease Control	
Office of the Secretary		2	Bureau of Environmental Health Services	6
Office of General Counsel		2	Bureau of Family Health	6
Office of General Services		2	Office of Chronic Disease & Health Promotion	7
Office of Government & Community Relations		2	Office of Local and Rural Health Systems	7
Office of Legal Services		3	Division of Information Systems	7
Office of Personnel Services		3	Office of Communication Services	7
Division of Environment		3	Office of Research and Analysis	7
Bureau of Air and Radiation		4	Office of Vital Statistics	7
Bureau of Waste Management		4	Kansas Health & Environmental Laboratories	8
Bureau of Environmental Remediation		4	Analytical Chemistry Laboratories	8
Bureau of Water		5	Microbiology Laboratories	8
Bureau of District Operations		5	Laboratory Information & Reporting Office	9
Office of Science & Support		5	Laboratory Improvement Program Office	9
Division of Health		5	Tips on Getting Help	9
Bureau of Adult and Child Care		5	Phone Directory	10

Preface

The Kansas Department of Health and Environment (KDHE) is responsible for administering a diverse collection of programs. These programs are designed to promote public health through health and environmental regulatory activities and supervision of health delivery services. It was because of that diversity the Office of Government and Community Relations prepared this guide to improve the understanding of agency programs and activities.

As the window to the agency, the Office of Government and Community Relations is the place to call within KDHE when you can't locate the right program area to deal with your concern. Our job is to explain to you how the agency works and direct you to the appropriate program.

We also recommend several companion publications to this guide: the *Guide to Health and Environmental Permits*, which outlines what business activities might require a KDHE permit; and the *Index to Names and Telephone Numbers for Environmental Problems*, a concise directory of Division of Environment staff and their respective program areas.

If you have questions, contact the Office of Government and Community Relations at 913-296-5795 or 913-296-1529. Thanks for your interest in the health and environment of all Kansans.

Department History

Kansas was one of the first states in the Union to establish a public health agency. In 1885, the Kansas Legislature created the Board of Health with a single part-time physician and a part-time assistant. The organization grew very slowly in the first twenty years as the recognized needs were limited.

In 1904, Dr. Samuel Crumbine, of Dodge City, was appointed Secretary to the Board of Health and agency chief. Dr. Crumbine moved public health in Kansas and the nation forward dramatically with his understanding of common disease transmission. "Swat the fly," "Bat the Rat," and "Don't Spit on the Sidewalk" became health slogans for all Kansans through Dr. Crumbine's effort. He pressed to eliminate common towels and common drinking cups. He emphasized cleanliness and fresh air to reduce breeding of harmful bacteria. The State of Kansas was a recognized national leader in health.

As state and federal public health programs began to mature the agency grew accordingly until 1974 when the agency became the Department of Health and Environment. The major new emphasis on federally mandated environmental problems and a massive influx of federal dollars caused KDHE to grow substantially in the late 1970s.

Since the mid-1980s federal mandates have continued to grow and until 1987 federal funds grew with the requirements.

Since 1987, federal dollars have been less available while many new programs have been created by Congress and enforced by federal agencies.

In fiscal year 1991, the agency budget was approximately \$111,000,000. About two-thirds of the funding is from federal sources. More than half of the KDHE funding is for direct pass through to local units of government or direct services to citizens.

The 850 KDHE staff members are highly motivated and professionally qualified staff to serve all Kansans. KDHE employees are located in three Topeka offices: Landon State Office Building, Mills Building, and Forbes Field; and district/section offices in Lawrence, Chanute, Salina, Wichita, Dodge City, Hays, and Pittsburg.

O. of the Secretary

Robert C. Harder

913/296-0461

Executive staff, headed by the Secretary of Health and Environment, provide policy, continuity, and management oversight for the divisions and offices in KDHE through the Secretary of Health and Environment.

Linkage with the Governor's office and other cabinet agencies is largely maintained by the Secretary and the executive staff, including the division directors. The Department maintains an open communication policy for all KDHE staff to the executive and legislative branches and all citizens of Kansas, as appropriate. The Department is committed to the fullest possible cooperation with state, local, and federal agencies in support of the philosophy and policies of the administration.

Several support offices are also part of the Office of the Secretary: Office of General Counsel; Office of General Services; Office of Government and Community Relations; Office of Legal Services; and Office of Personnel Services. The directors of each office as well as the directors of each of the four divisions report to the Secretary of Health and Environment. Those divisions are: Environment, Health, Information Systems, and Kansas Health and Environmental Laboratory.

Executive Manager

Laura Epler

913/296-6917

The Executive Manager assists the Secretary in the development and review of policy and budgetary matters.

Office of General Counsel

Robert V. Eye

913/296-1291

The Office of General Counsel provides legal and policy analyses of agency matters to the Secretary. Additionally, the office serves as lead counsel in litigation when the Secretary is a named party.

Office of General Services

Chris Stanfield

913/296-1520

The Office of General Services provides an array of administrative, central support, and fiscal services to all programs within the Department. General Services is comprised of eight sections: Support Services; Central Services; Purchasing; Grants Management; Payroll Accounting; Budget Accounting and Control; Aid-to-Local Units; and Budget Development and Preparation.

- Support Services manages the on-going space management and planning activities for all KDHE offices which includes: negotiating rent leases, remodeling of space, planning office moves, and coordinating building maintenance.
- Central Services provides coordination of state vehicles, maintains central capital inventory records, maintains a stockroom for volume purchase and distribution of office supplies, provides central mail

services. This section also manages the encumbrance and payment process for non-salary items.

- Purchasing provides supervision and technical assistance for the purchase of goods and services. This section interacts with the Division of Purchases to procure items at favorable prices.
- Grants Management provides technical assistance to program personnel, prepares financial status reports to grantors, coordinates grants, coordinates an employee time and effort reporting system, maintains records on federal letter of credit funding processes, and provides cashier services.
- Budget Accounting and Control maintains a computerized budget accounting system that accounts for appropriations and grant awards both on the State fiscal year and grant award periods. Monthly management reports are prepared to assist program personnel to operate within appropriations and grant awards.
- Payroll Accounting prepares monthly employee payrolls, maintains ongoing projection of employee salaries in relation to funding sources, distributes salary amounts to appropriate funding sources based on employee effort reports, and prepares salary information for budget preparation.
- Aid-to-Local provides fiscal management of grants to local health departments and other units of local government. Loans to municipalities for wastewater treatment plant improvements from the state revolving loan fund and the sale of revenue bonds are also administered by this section.
- Budget Development and Preparation manages preparation of the budget document and the budget process as it progresses through the Division of the Budget and the Legislature.

Office of Government & Community Relations

Pamela Johnson Betts

913/296-5795

The Office of Government and Community Relations is the liaison between the Department and the many groups and organizations with which it interacts. It is comprised of three sections: Administration, Graphic Arts, and Publication Services; Public Information Services; and Health and Environmental Education Services.

- Administration, Graphic Arts, and Publication Services provides agency coordination with media, government, and community organizations. Prepares, prints, and issues general informational materials regarding the Department. Provides requested assistance within the Department for development of reports, documents, brochures, posters, displays, and other materials and develops individualized artistic representations as requested.

- and Environmental Education maintains an audiovisual loan service of over 2,000 items resulting in film/video showings numbering about 1,300 per month to nearly 31,000 Kansans; a literature distribution service of over 2,000 titles, with an annual distribution of over one million pieces; a new environmental health education program targeting youth and agency-wide efforts.

- Public Information Services provides accurate, timely information about the Department to the public through the media. Information disseminated includes agency plans, upcoming activities, regulatory actions, program accomplishments, service announcements, and public statements. Forms of delivery include news releases; tip sheets; fact sheets; general information pamphlets, brochures, and newsletters; public service announcements; news briefings; and press conferences. Other activities include public relations counsel; news clippings; staff newsletter; and internal public information activities.

Office of Legal Services

Yvonne Anderson

913/296-1330

Three primary areas of service provided by this office are rule making, enforcement, and legal counsel.

- Rule Making: The office works closely with the agency staff to ensure the clarity and legality of regulations related to the various programs administered by the agency. Legal Services also evaluates proposed legislation relating to health and environmental issues.
- Enforcement: Office attorneys enforce the sanctions imposed on those who violate laws which protect the health and environment of our citizens. The staff pursue these sanctions from administrative hearings through state and federal appellate courts.
- Legal Counsel: Like all large, complex organizations KDHE requires legal counsel to ensure that its relationships with its employees, the private sector, and other units of government are legal and proper. The Office of Legal Services provides counsel to the agency, and defends the agency when it is involved in litigation.

Office of Personnel Services

Sally O'Grady

913/296-1290

The Office of Personnel Services administers a comprehensive personnel program for KDHE employees. The Office of Personnel Services has decentralized classification and examination authority from the State Division of Personnel Services (DPS). In addition to classifying all positions, staff assists DPS with classification studies and administers a number of civil service examinations.

Staff classify all positions; recruit for all vacant positions; coordinate the interview and selection process; coordinate personnel training; generate all personnel transactions; maintain all personnel records; provide employee benefit

information to all employees; provide employee counselling and guidance; and oversee all activities associated with EEO/Affirmative Action, employee grievances, disciplinary actions, and performance evaluation appeals.

Division of Environment

Charles Jones

913/296-1535

The Division of Environment has statutory authority for control of most environmental contaminants and conditions related to human health, aquatic flora and fauna, plant and animal life, and soil.

Environmental goals are: maintain a healthful environment free of disease-causing agents; reduce and prevent irritants affecting enjoyment of life and property; preserve natural resources; and develop environmental control programs that are responsive to Kansas' needs in a cost-effective manner.

To achieve these environmental goals and legislative mandates which are primarily regulatory in nature, the Division provides consultation services to citizens, municipalities, and industries. A cooperative program of education and service is provided in conjunction with a regulatory program as the most effective and least costly way to obtain environmental objectives and goals.

These services are provided through technical review of plans and specifications. Staff aid in indicating probable compliance with standards and, if possible, suggest better and more cost-effective alternatives. Counsel is provided on safe and effective methods of handling a variety of chemicals and hazardous and toxic wastes, and a broad initiative exists to control, contain, or clean up contamination of state soil and water. Training programs are provided to operators of municipal and industrial water supplies, wastewater treatment plants, and solid waste facilities to ensure compliance, efficiency, and economy.

KDHE has developed new programs to address some of the problems facing the Kansas environment.

- An accepted program for reviewing and approving reclamation plans for lands to be mined for coal and using federal funds to reclaim lands mined in the past.
- An established program to address sites contaminated with hazardous substances, leaking underground storage tanks, and response to spills which may pollute waters or lands.
- A program to financially assist owners of underground storage whose tanks have leaked, thus contaminating soil and water.
- A joint effort between the Department and the Kansas Development Finance Authority to provide low cost loans to communities to fund wastewater facilities.

- increasing the capacity of county health departments deal with local environmental issues through funding from the State Water Plan Fund.
- A household hazardous waste grant program to facilitate the initiation of local household hazardous waste programs.

To carry out its responsibilities, the Division of Environment is structured to provide related or specialized expertise within major program areas. These areas are established as bureaus: Water, Air and Radiation, Waste Management, Environmental Remediation, and District Operations. An Office of Science and Support provides technical support to division programs and activities.

Major program elements administered by six bureaus and offices include: public water supply, water pollution control, injection well control, water well driller licensing, air pollution control, asbestos, hazardous and solid waste management, nonpoint source management, surface mining, air and water monitoring, fish kill investigations, underground storage tanks, and management of long-term environmental contamination by control, containment, or cleanup.

Bureau of Air and Radiation

John Irwin 913/296-1540
The bureau is responsible for administration of regulatory programs for radiation control, air quality, Right-to-Know, radon, and asbestos.

Air quality activities involve the review, approval, and regular inspection of all air contaminant emission sources. These activities are conducted to ensure that proper emission control is present and in accordance with federal and state air quality standards. Long-term atmospheric air sampling and enforcement programs are provided by local health agencies in cooperation with KDHE. The bureau administers the program for licensing and certification of firms and people engaged in asbestos removal.

Federal and state Right-to-Know legislation established a principle of public access to facility information regarding toxic emissions and hazardous chemicals in the community. To achieve this goal the Right-to-Know program collects data on quantities and location of hazardous chemicals and toxic releases. This data is analyzed and made available to communities for their use in planning for emergency response, other local planning, development of public policy, epidemiological studies, and other purposes.

The mission of protecting citizens from the harmful effects of radiation is achieved through a regulatory program which includes the licensure, registration, and inspection of all radioactive materials and radiation producing equipment used in medicine, research and industry in Kansas. This program also has responsibility for the state's indoor radon program.

Bureau of Waste Management

Tom Gross 913/296-1600
The bureau regulates the disposal, treatment, and storage of waste materials, ranging from hazardous wastes to household trash.

The bureau oversees the activities of firms that generate, treat and store hazardous waste. Facilities must meet strict standards before obtaining a hazardous waste permit. The hazardous waste management program regulates the generation, transportation, storage, treatment, and disposal of hazardous wastes in accordance with state and federal regulations. The program administers permits to persons who store, treat, or dispose of hazardous wastes.

The bureau oversees a program to manage solid waste storage, recycling, reuse, and disposal within the state. New federal and state legislation is being implemented by the bureau to implement better controls, and thus prevent contamination, from solid waste landfills. The bureau also operates a household hazardous waste grant program and a waste tire grant program. The goal of both programs is to reduce the disposal of such items in landfills by reusing or recycling the materials.

Bureau of Environmental Remediation

Larry Knoche 913/296-1660
The mission of the Bureau of Environmental Remediation is to respond to environmental emergencies and to manage environmental contamination through pollution source control, containment, or remedial action. The program responsibilities are: investigation of pollution occurrences and sources from spills, illegal dumping, abandoned facilities, and landfills; storage tank regulations; surface mining site regulation; and designing and overseeing remedial activities at contaminated sites.

Remediation at contaminated sites often follows negotiation with responsible parties for the necessary cleanup. The work may involve funding through the State Environmental Response Fund and the State Water Plan Remediation Projects Fund for those sites where a responsible party cannot be found or is recalcitrant. Cost recovery of state funds used for remediation is an option. The underground storage tank program, which includes registration of underground storage tanks (USTs), is also involved in the investigation and oversight of remedial activities at sites with leaking USTs. Remediation of such sites may be funded from the Petroleum Storage Tank Release Trust Fund.

The Mining Section, located in Pittsburg, regulates coal mining and the reclamation of abandoned mine lands. The section administers and enforces of all laws and regulations governing active coal mining while also overseeing the reclamation of problems associated with past coal mining activities.

Bureau of Water

Karl Muelldener

913/296-5500

The Bureau of Water administers programs regulating public drinking water supplies; wastewater treatment facilities for industries, businesses, and livestock feeding facilities; liquified petroleum storage, solution mining, underground injection of wastes, and water well driller licensing. These programs are designed to prevent water pollution and provide safe potable public water supplies.

The bureau provides engineering and operational surveillance of public water supplies and wastewater facilities; reviews engineering reports, plans and specifications for treatment of drinking water and wastewater; carries out a compliance and enforcement program; and issues permits for new or extended systems. Municipal, industrial, and commercial wastewater systems, including agricultural waste, are reviewed and permitted. Underground injection of wastes, solution mining and LPG storage are regulated and permitted through both state and federal programs.

The bureau assists cities in establishing local controls on industries or issues permits to industries directly. The bureau administers the federal grant and state revolving loan programs for construction of municipal wastewater facilities.

Following a transition period, the bureau operation includes the Nonpoint Source Section. This unit implements Section 319 of the Clean Water Act, coordinating programs designed to eliminate or minimize pollution that does not come from the end of a pipe. The section develops and reviews strategies, management plans, local environmental protection plans, county environmental codes intended to control nonpoint source pollution.

Bureau of District Operations

Ron Fox

913/296-0077

Field staff, assigned to the Bureau of District Operations, provide a great deal of the direct service, inspections and technical assistance required by the division. Bureau staff are often the first to deal with the public on field compliance situations. The bureau was created to strengthen the role of district office staff in division decision making and improve overall responsiveness to environmental problems. District office staff take environmental samples, investigate complaints, and work with the public to ensure the environment is protected. Staff serve the water, air quality, environmental remediation, and waste management bureaus.

Office of Science and Support

Ron Hammerschmidt

913/296-6033

This office provides technical, scientific, and data support to the operating bureaus of the division. The goal of the office is to enhance the decision making of the division by providing a sound scientific basis for those actions.

The office's Technical Services Unit is responsible for collecting water data and the preliminary analysis of the

data. The data collected by the Technical Service Unit forms the base from which the Kansas Water Data Unit is formed. The unit performs the surveillance necessary to insure compliance with water quality standards for permitted discharges of wastewater. The surveillance system of stream stations (103 water quality and 58 biological) and special lake studies provides data to determine the quality of Kansas waters. This unit determines the minimum stream flows necessary to maintain surface water quality.

Division of Health

Robert C. Harder (acting)

913/296-1343

The mission of the Division of Health is to protect and promote the health of Kansans through a variety of public health service delivery and regulatory programs. These programs are designed to: protect Kansans from communicable disease; ensure healthy and safe adult and child care facilities; inspect food services for proper sanitation; assess environmental health risks; improve the access to medical care for low income Kansans and pregnant women, children, and families who are at risk for poor health; and promote healthy lifestyles by combating chronic disease.

There is a strong partnership between the State and local health departments in the delivery of the public health services. The Department's role is to assure services through: funding assistance to local agencies; establishing policy and procedures; and program consultation, planning, implementation and continuation. With some exceptions, local health departments are the service delivery component of the partnership. The division also includes the Coordinating Council on Early Childhood Development Services, which coordinates the work of several state agencies that provide developmental services to young children.

Program activities of the Division of Health are carried out by six bureaus or offices: Bureau of Adult and Child Care; Bureau of Disease Control; Bureau of Environmental Health Services, Bureau of Family Health, Office of Health Promotion and Chronic Disease, and Office of Local and Rural Health Systems.

Bureau of Adult and Child Care

Joe Kroll

913/296-1240

The Bureau of Adult and Child Care licenses and certifies all types of health facilities including adult care homes, hospitals, home health agencies and facilities for the mentally retarded. The bureau licenses or registers all types of child care facilities including day care, residential care, preschools, and child placing agencies.

The Adult Care Complaint Program investigates allegations of abuse, neglect, exploitation, and failure to provide adequate care of persons residing in an adult care facility, a medical care facility, or receiving home health agency services. A toll-free number, staffed from 8:00-4:30, is available to receive complaints. This program fulfills federal and state program requirements relating to quality of care provided in licensed and certified facilities.

The Bureau also implements the Health Occupations Credentialing Program which makes recommendations to the Secretary regarding whether health occupations should be credentialed. Implementation of several health occupations credentialing statutes is also a program responsibility. The bureau is organized into six programs by function, although all programs are interrelated.

Bureau of Disease Control

Deborah Alfano

913/296-5586

The function of the Bureau of Disease Control is to design, conduct, and evaluate programs to prevent and control disease. This is accomplished by applying the epidemiologic process, which involves studying secular, geographic, and population trends in the incidence and prevalence of disease. Specific processes currently in use are the provision of vaccines to help prevent disease, the provision of antibiotic and antiviral drugs to help cure or control disease, and the provision of consultation on the appropriate medical and administrative measures applicable to the public health management of single cases and outbreaks of disease.

The epidemiologic process, as applied by the bureau, is not limited to diseases which are communicable from person to person. It also embraces the study of chronic disease and both intentional and unintentional injury. The activities of the bureau are supported by a large body of statutory and administrative law. The law provides for disease reporting and disease-specific control measures.

The bureau is also overseeing a pilot study (Health Risk Assessment at Galena) funded by the Agency for Toxic Substances & Disease Registry (ATSDR) to conduct a lead and cadmium exposure study among persons residing in this heavily mined area. Among the outcomes of this pilot project will be the gaining of knowledge and expertise for the application of effective risk assessment methods and risk communication in other areas.

Bureau of Environmental Health Services

Steve Paige

913/296-5600

This bureau is charged with overseeing environmental health, food service and food manufacturing sanitation and consumer protection for the citizens of Kansas.

The mission of assuring the safety of food and drugs consumed by the public is accomplished through uniform enforcement of statutory mandates of the Food, Drug and Cosmetics Act, The Food Service and Lodging Act, and by contracting with the Consumer Product Safety Commission. The mission is accomplished by an inspection, licensure, and investigative program directed at preventing threats to the public health and taking the necessary remedial steps when infractions, foodborne illnesses, truck accidents, injuries, or natural disasters do occur. Approximately 16,000 establishments are regulated by the KDHE. An estimated one-third (4,000) of licensed food establishments are inspected under contract with local health departments.

Bureau of Family Health

Azzie Young

913/296-1330

The primary responsibility of the Bureau of Family Health is to plan, develop, and coordinate health resources and programs to meet the health needs of Kansas families. Comprehensive planning, training, consultation, and technical assistance are provided statewide to health providers, and preventive screening, diagnostic, and treatment health services are provided to local residents. The bureau is comprised of three operating sections: Children and Families, Nutrition and WIC Services, and Services for Children with Special Health Care Needs.

- Services for Children with Special Health Care Needs (SHS) has as its goal the promotion of the functional skills among young persons in Kansas who have a handicap, disability, or chronic disease by providing or supporting needed specialty health care in the form of: diagnostic services, inpatient/outpatient services, outreach services, and special services. Services such as newborn screening, early identification and follow-up, genetics, and the Infant/Toddler Program are also part of the SHS Section.
- Nutrition and WIC Services provides nutrition consultation to all programs of the Department, administers the Federal Supplemental Food Program for Women, Infants and Children (WIC), and the Commodity Supplemental Food Program (CSFP) in Kansas. WIC provides nutrition screening; counseling and education; food supplements and health referrals for pregnant and breastfeeding women, infants, and children under five years of age. The primary goal of the section is to improve the health and nutritional well-being of limited income pregnant, breastfeeding and postpartum women, and children through: access to quality nutrition intervention services by a registered/licensed dietitian, breastfeeding promotion and support, and substance abuse education and referral.
- The Children and Families Section focuses on services that support the health of families through prevention of illness, access to health care during and after pregnancy including family planning, and access to health care for infants and children. The goal of the section is to assure access to quality, comprehensive family-centered, preventive, and primary health care services for preconceptual and pregnant women, infants, children, adolescents, and their families, especially those with low income or limited access to care through: support for community-based medical, educational, counseling, outreach, and referral services; written guidelines and standards of care for all programs with monitoring, technical assistance, and follow-up as necessary; provision of information and educational opportunities to upgrade and develop provider skills in identified need areas; and periodic review of state, county, and community health data to develop programs which address priority health concerns for Kansas families.

Office of Chronic Disease & Health Promotion

Paula Marmet 913/296-1207

The goal of this office is to improve the quality of life and reduce the incidence of death and disability due to chronic diseases and injury of Kansans. The Office of Chronic Disease and Health Promotion (OCDHP) provides state level administration, consultation, education, and support services for the development of programs for the prevention, early identification, and control of chronic diseases and injuries in the Kansas populations. Primary prevention strategies to reduce identified risk factors such as high blood pressure, elevated blood cholesterol levels, physical inactivity, tobacco use, poor nutrition and behaviors related to preventable injuries are implemented. Interventions are implemented through community-based programs in worksites, schools, businesses, public and private health agencies, youth groups, senior centers, and through coalition activities such as Safe Kids, Tobacco Free Kansas, and Kansas LEAN.

Office of Rural and Local Health Systems

Dick Morrissey 913/296-1200

The Office of Local and Rural Health Systems (OLRHS) was created to develop an integrated approach to dealing with the complex issues related to health care delivery. OLRHS goals are threefold: develop systems to coordinate existing state, federal, and private initiatives; coordinate funding strategies for maximum efficiency; and facilitate delivery system changes where needed.

Providing leadership and technical assistance, the office helps local health departments, hospitals, doctors, and other health care professionals maximize available government resources by: determining manpower needs; providing technical assistance to communities; assisting in development of comprehensive health care systems; coordinating funding strategies for maximum efficiency; coordinating federal, state, and local programs.

Division of Information Systems

Lorne Phillips 913/296-1415

The Division of Information Systems manages the information resources of the Department. The division applies state-of-the-art technology for the most efficient operation of the Department's information functions: research and analysis; telecommunications; data processing; vital records. Staff collect, process, analyze, distribute, and publish a variety of data that is disseminated in various ways: reports, data printouts, documents, special analyses, and publications.

Formation of the division in 1988 served to consolidate independent data processing and information dissemination activities into a more coordinated operation. As a result, the Department gained efficiency and effectiveness in information handling. The division has been proactive in planning and preparing solutions to the overall information management system for the Department. Successes include: improved connectivity of the Department's data sharing resources; automation of the collection and dissemination of vital records resulted

in improved service to the public; department-wide support to maximize the efficiency of staff utilization and information resources; use of automated phone attendants to maximize staff efficiency.

The division is comprised of three offices: Communication Services, Research and Analysis, and Vital Statistics.

Office of Communication Services

Jim Green 913/296-5620

This office manages all aspects of data processing and electronic communications within the Department and with other organizations. It provides support for data resource management and computer usage. The Department's ability to use information and make sound decisions based on accurate data has been enhanced through a number of activities:

- Successful support and connectivity of information resources within the Department and with other state and federal agencies.
- Training of staff on effective utilization of the state's information resources.
- Integration of the Department's various data processing needs into a cohesive, coordinated operation.
- Initiation of a Geographic Information System that will enhance policy making on issues impacting the public health and the environment.

Office of Research & Analysis

Jim Staehli 913/296-5640

This office is responsible for the research and analysis of health and environmental data; generating information for the public and policy makers on crucial issues; and preparing reports. This information provides the statistical basis for numerous policy decisions by a variety of state agencies. Reports generated by the office include: *Kansas Occupational Injury And Illness Survey* and *Annual Summary of Vital Statistics*.

Office of Vital Statistics

Charlene Satzler 913/296-1414

This office maintains over eight million vital records, adding over 100,000 new records annually. The Registration and Amendment Section is responsible for collecting, processing, amending, and placing on permanent file birth, death, marriage, and divorce records for those events occurring in Kansas. The Certification Section is responsible for protecting and issuing certified copies of the birth, death, marriage, and divorce records on file. Issuance of certified copies generates approximately \$1.5 million annually for the state general fund.

To provide better public service, the office automated the processing of vital records.

- Implemented an Electronic Birth Certificate (EBC) system in 30 hospitals across the state with almost 80 percent of all births occurring in the state being reported through the EBC.
- Developed and implemented an optical disk system and converted 2.1 million records to optical images to improve storage and reduce retrieval time for copies requested by the public.

Kansas Health and Environmental Laboratory

Roger Carlson 913/296-1619

The Kansas Health and Environmental Laboratory, a public health laboratory, is an integral and important part of the Kansas public health system. The nearly one million chemical and microbiological analyses produced in this division each year constitute the primary assessment tool in public health issues ranging from detection of environmental contaminants to the control of infectious diseases. In addition, laboratory certification and improvement programs work to ensure the quality of several hundred million test results produced by more than four hundred regulated medical, environmental, and law enforcement laboratories located throughout the state. The division is characterized by modern instrumentation and data management together with a strong professional staff and a firm commitment to analytical excellence.

Due to the diversity of specific analytical and operational programs, the division is organized into nine individual units in four general program areas. Radiation Chemistry, Organic Chemistry, Inorganic Chemistry, and Neonatal Screening/Toxicology comprise the Analytical Chemistry Laboratories. Virology/Serology, Diagnostic Microbiology, and Environmental Microbiology comprise the Microbiological Laboratories. The Laboratory Information and Reporting Office and the Laboratory Improvement Program Office complete the division.

These units work closely with each of the agency bureaus. In addition, laboratory units are in frequent, direct contact with Kansas physicians, law enforcement agencies, hospitals, private laboratories, and the general public. Laboratories maintain a strong working relationship with federal reference laboratories at the Centers for Disease Control, Environmental Protection Agency, and the Food and Drug Administration.

Analytical Chemistry Laboratories

The state public health laboratory includes four chemistry laboratories which perform different analyses using different methods and instrumentation.

Radiation Chemistry Laboratory

Dominic To 913/296-1629

This laboratory detects and quantifies radioisotopes in air, ambient and public drinking waters, milk, and vegetation. This laboratory also monitors samples from within a 90 mile radius of Wolf Creek nuclear power station to

insure that no releases occurred. This radiation chemistry laboratory is the only such laboratory in the state.

Neonatal Screening/Toxicology Laboratory

Willie Craft 913/296-1650

This laboratory tests blood specimens from each of the 42,000 babies born in Kansas each year. Each infant is evaluated for three metabolic deficiency diseases. Any affected infant which is not detected within 30 days of birth and placed on supportive therapy will suffer brain damage resulting in mental retardation. This laboratory has tested about one million infants since 1965. During the past year, staff have begun to test the same specimens for maternal antibody to the AIDS virus. Staff also evaluate specimens for sickle cell disease upon request. In addition, this laboratory is certified to examine fiber samples for amount and type of asbestos content.

Inorganic Chemistry Laboratory

Robert Bostrom 913/296-1654

This laboratory performs as many as 26 individual specific analyses on samples from public drinking waters, ambient waters, soils, toxic wastes, and other materials. Toxic heavy metals, plant nutrients, and other species are particularly important to drinking water safety and environmental monitoring of air and water quality.

Organic Chemistry Laboratory

Russell Broxterman 913/296-1647

This laboratory detects and quantifies trace levels of pesticides, herbicides, and other toxic organic species in drinking waters, remediation sites, ambient waters, and hazardous wastes. These analyses are particularly difficult and labor intensive because of the part per billion working range required by federal regulations and because there are at least two million different organic species in the environment.

Microbiology Laboratories

The state public health laboratory includes three microbial laboratories which perform different analyses for the detection and identification of different biological species of public health interest.

Environmental Microbiology Laboratory

Richard Strecker 913/296-1658

This laboratory tests ambient waters and public drinking water supplies throughout Kansas for coliform indicators of fecal pollution. The 45,000 samples which are received each year must be analyzed within 30 hours after collection. This laboratory responsibility serves to prevent waterborne outbreaks of infectious diseases in our state.

Diagnostic Microbiology Laboratory

William Walden 913/296-1636

This laboratory isolates and identifies bacteria, fungi, and intestinal parasites which are the etiologic agents of infectious diseases. This work supports local health departments, Kansas physicians, and agency disease control programs. The reference laboratories assist in the

identification of species referenced in clinical laboratories. Staff seek the consultation and assistance of the Centers for Disease Control laboratories frequently.

Virology/Serology Laboratory

Patrick Hays

913/296-1644

This laboratory isolates and identifies viruses of public health interest. Because of the difficulty of maintaining the necessary cell cultures and animal hosts, there are only a small number of laboratories in Kansas with this ability. In addition, these laboratories examine a large volume of blood specimens for antibody indicators of patient infection. The laboratory's extensive support of county HIV surveillance programs is a good case in point. Chlamydia, which are the most frequently encountered sexually transmitted disease agents in Kansas, are detected in this laboratory also.

Laboratory Information and Reporting Office

Roberta Walker

913/296-1624

The mission of this office is to manage the logistics of receiving 315,000 laboratory samples, entering the required demographic data into the laboratory information base, and managing the production, distribution, and archival storage of an equal number of finished laboratory reports. This office also manages the computer-controlled stockroom inventory system and the acquisition of a half million dollars of test materials and reagents which are required for laboratory operations each year.

Laboratory Improvement Program Office

Theresa Hodges

913/296-1640

The mission of this office is to ensure the quality of millions of laboratory tests performed in 206 medical laboratories, 160 environmental laboratories, and 215 law enforcement agencies located throughout Kansas. This task is accomplished through certification procedures which include annual site visits to measure laboratory facilities, methods, staff, and quality assurance procedures against established standards. Approved laboratories are required to periodically analyze unknown proficiency test samples with an acceptable level of accurate performance. In addition to a regulatory role, this office also provides formal training courses and other laboratory improvement support for deficiencies identified in Kansas clinical laboratories. This office works very closely with the Bureau of Adult and Child Care on the Medicare certification and state licensure of Kansas hospitals.

Tips on Getting Help

State and federal laws and regulations govern the Department's activities. Some state regulations adopt federal health or environmental regulations by reference. Many KDHE program areas provide copies of the applicable laws and regulations.

Many health care services supported or administered by KDHE are provided directly by local health departments. Those agencies are the front line of public health protection. Questions about obtaining services for WIC, prenatal care, family planning, immunizations, and in some instances primary health care when a physician is unavailable, should be directed first to the local county health department.

The Department of Social and Rehabilitation Services (SRS) provides many direct services to those Kansans who meet eligibility guidelines. Some of those include health care and prenatal care. Check with the local SRS office for details.

Most health and environmental permits, approvals, and licenses are issued by KDHE staff. Sometimes local approvals such as zoning are required. Before beginning a business activity, talk to the Department of Commerce Clearinghouse to learn about health and environmental laws that might impact it, but other state requirements.

KDHE does not have a program for industrial health and safety. That program is operated by the Kansas Department of Human Resources. Health and safety in the workplace is regulated by the Occupational Safety and Health Administration, which has an office in Wichita.

The regulation of oil field pollution is shared between KDHE and the Kansas Corporation Commission (KCC). Pollution that occurs on the lease is the jurisdiction of KCC while pollution off-lease and from abandoned wells is under KDHE jurisdiction.

KDHE and the Kansas Department of Wildlife and Parks investigate fish kills. Reports of fish kills should be made to either agency.

All spills of materials in the state that pose a threat to the environment must be immediately reported to KDHE. Personnel from the Division of Emergency Preparedness of the Adjutant General's Office and local spill response teams should also be notified. The initial contact for these reports should be to the closest KDHE district office. After 5:00 p.m. or on weekends and holidays, make the report to the KDHE main office in Topeka at 913-296-1500.

Kansas Department of Health and Environment
Landon State Office Building
900 SW Jackson Street
Topeka, Kansas 66612-1290
913-296-1500

OFFICE OF THE SECRETARY

SECRETARY

Office of General Counsel
Executive Manager
Office of Personnel Services
Office of General Services
Office of Government & Community Relations
Office of Legal Services

Robert C. Harder 296-1522
Robert Eye 296-1337
Laura Epler 296-6917
Sally O'Grady 296-1290
Chris Stanfield 296-1520
Pamela Johnson Betts 296-5795
Yvonne Anderson 296-1330

DIVISION OF ENVIRONMENT

DIRECTOR OF ENVIRONMENT

Deputy Director/Office of Science & Support
Bureau of Air & Radiation
Bureau of Waste Management (acting)
Bureau of District Operations
Bureau of Environmental Remediation
Bureau of Water

Charles Jones 296-1535
Ron Hammerschmidt 296-1535
John Irwin 296-1540
Tom Gross 296-1600
Ron Fox 296-0077
Larry Knoche 296-1660
Karl Muehdener 296-5500

DIVISION OF HEALTH

DIRECTOR OF HEALTH (acting)

Coordinating Council on Early Childhood Development Services
Bureau of Adult & Child Care
Bureau of Disease Control
Bureau of Environmental Health Services
Bureau of Family Health
Office of Chronic Disease & Health Promotion
Office of Local & Rural Health Systems

Robert C. Harder 296-1086
Pat Barber 296-1329
Joe Kroll 296-1240
Deborah Alfano 296-0022
Steve Paige 296-0189
Azzie Young 296-1300
Paula Marmet 296-1207
Richard Morrissey 296-1200

DIVISION OF INFORMATION SYSTEMS

DIRECTOR OF INFORMATION SYSTEMS

Office of Communication Services
Office of Research & Analysis
Office of Vital Statistics

Lorne A. Phillips 296-1415
James Green 296-5620
Jim Staehli 296-5640
Charlene Satzler 296-1400

KANSAS HEALTH AND ENVIRONMENTAL LABORATORY

DIRECTOR OF LABORATORIES

Radiation Chemistry
Organic Chemistry
Inorganic Chemistry
Neonatal Screening/Toxicology
Virology/Serology
Environmental Microbiology
Diagnostic Microbiology
Laboratory Improvement Program Office
Laboratory Information & Reporting

Roger Carlson 296-1619
Dominic To 296-1629
Russell Broxterman 296-1647
Robert Bostrom 296-1654
Willie Craft 296-1650
Patrick Hays 296-1644
Richard Strecker 296-1668
William Walden 296-1636
Theresa Hodges 296-1640
Roberta Walker 296-1624

DISTRICT - SECTION OFFICES

North Central Office
2501 Market Place, Suite D
Salina, Kansas 67401

Delbert Zerr (913) 827-9639

Southeast District Office
1500 West 7th, P.O. Box 888
Chanute, Kansas 66720

Jo Ann Moran (316) 431-2390

Northeast District Office
808 West 24th Street
Lawrence, Kansas 66046

Jeff Lamfers (913) 842-4600

Southwest District Office
302 West McArthur Road
Dodge City, Kansas 67801

Richard Buchanan (316) 225-0596

Northwest District Office
2301 East 13th Street
Hays, Kansas 67601

Juliet Honas (913) 625-5663

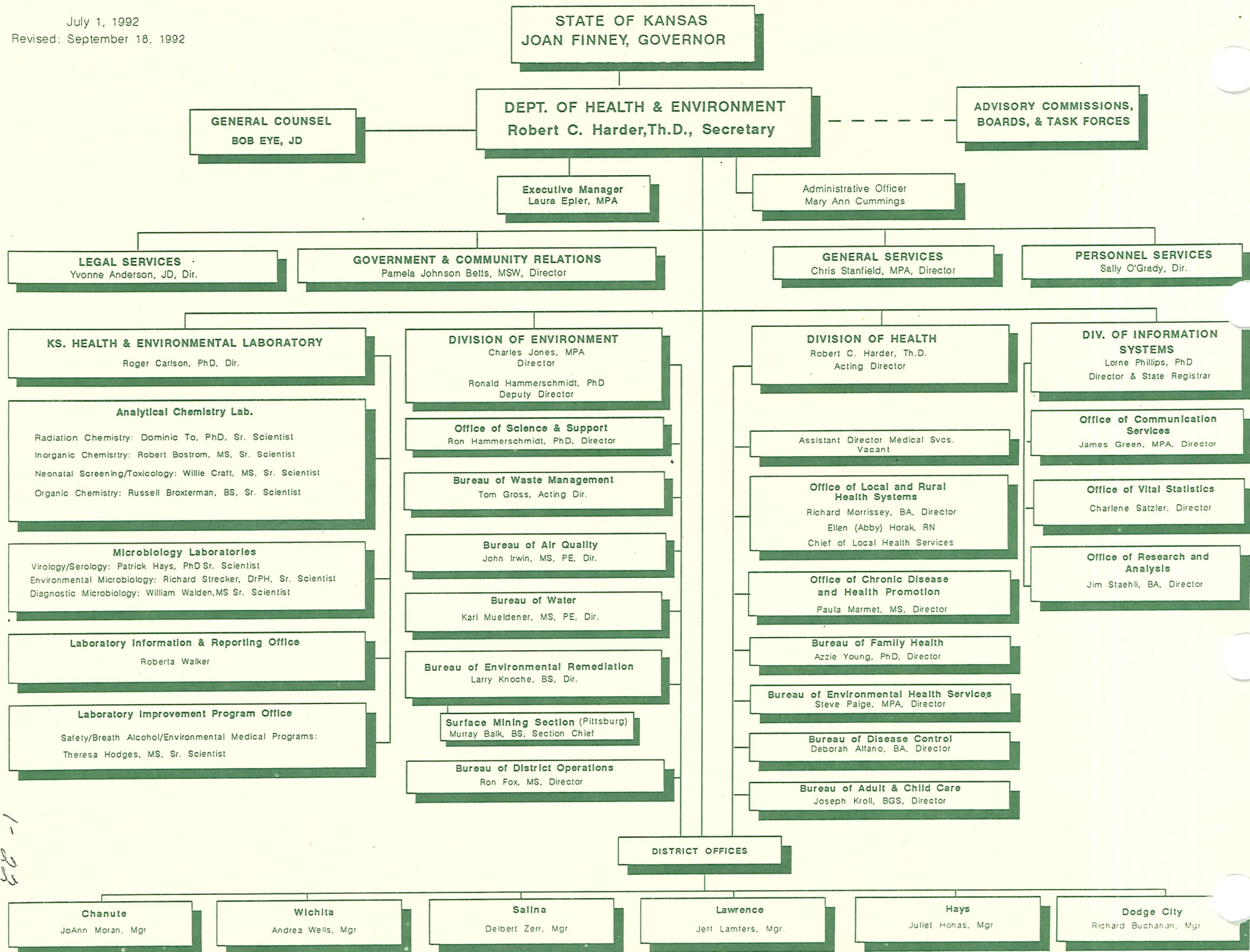
Surface Mining Section
P.O. Box 1418
Pittsburg, Kansas 66762

Murray Balk (316) 231-8540

South Central District Office
1919 Amidon, Suite 130
Wichita, Kansas 67203

Andrea Wells (316) 838-1071

Nursing Home Complaint Coordinator 296-1240
24-Hour Emergency/Spill Response 296-1500
Vital Statistics (birth, death, divorce & marriage records) 296-1400



Briefing Presented to
House Energy and Natural Resources Committee
by
The Kansas Department of Health and Environment

Briefing presented by: Charles F. Jones, Director
Division of Environment
January 19, 1993

House E & NR 1-19-93
Attachment 2

DIVISION OF ENVIRONMENT

MISSION

The Division of Environment is responsible for the management of water quality, air, radiation, solid and hazardous waste, and remediation of contamination. Within this scope is administration of federally-delegated programs related to the Clean Water Act, Safe Drinking Water Act, Resource Conservation and Recovery Act, Clean Air Act, and Superfund legislation.

RESOURCES

	Apprv FY 93	Gov Rec 94
Salaries and Wages	9,277,204	10,112,220
Contracts	25,722,103	29,187,428
Commodities	186,647	208,990
Capital Outlay	639,881	138,499
TOTAL	<u>35,825,835</u>	<u>39,647,137</u>
FTE	198.3	199.3
SPO	62.0	62.0

ORGANIZATION CHART

DIRECTOR
DEPUTY DIRECTOR

OFFICE OF SCIENCE & SUPPORT
 pollution prevention
 small bus/loc govt support
 scientific/fiscal analysis

DISTRICTS
 Chanute
 Dodge City
 Hays
 Lawrence
 Salina
 Wichita

REMEDICATION
 storage tanks
 remedial
 preremedial
 mined land

AIR
 air
 asbestos
 radiation
 right-to-know

WASTE
 solid
 hazardous

WATER
 industrial
 municipal
 nonpoint source
 public wtr supply
 technical services

OFFICE OF SCIENCE AND SUPPORT

MISSION

The newly-created Office of Science and Support was established in order to strengthen the division's analytic capability and to improve overarching support services.

PROGRAMS

The Office of Science and Support is responsible for developing the following programs.

- Pollution prevention is gaining wide recognition as the optimal means of environmental protection. Through pollution prevention measures such as material substitution and waste recycling, the generation of pollutants is eliminated rather than controlled or mitigated.
- Improved support for small businesses and local government. The growing wave of federal laws, in combination with increasing public demands for environmental protection, have strained small business and local government capacities to the breaking point. The OSS initiative on small business and local government is intended to provide technical and, when possible, financial assistance to these front-line service providers.
- Improved capacity to provide scientific and fiscal analysis. Through this improved capacity, the division aspires toward making regulatory decisions based on environmental indicators, and providing meaningful and accurate analysis of the fiscal consequences of regulatory action and inaction.
- Greater and better coordinated support services. Improving support services -- particularly in the areas of contract management, education, and outreach -- are critical to maximizing division performance.

BUREAU OF AIR AND RADIATION

MISSION

The Bureau of Air and Radiation is responsible for air quality, Right-to-Know and radiation control. Additionally, the bureau represents KDHE on the State Emergency Response Commission.

SECTIONS

PROGRAM DATA

Air Engineering	
- new and existing sources of primary and toxic emissions	267 permits
Air Inspection and Enforcement	
- compliance inspection of permitted sources	1342 inspect/yr
- complaint investigation	115 invest/yr
- compliance enforcement	44 enf actions/yr
Air Surveillance and Analysis	
- criteria pollutant ambient monitoring	47 sample sites
- special investigations	5 /yr
Asbestos Control	
- licensing and certification of asbestos workers and companies	1283 workers 58 companies
- site inspections	413 inspect
- complaint investigations	45 invest
- project notifications recd	979
Radiation Control	
- transfer, storage, management and disposal of radioactive materials	505 licensees
- inspections and investigations	503 inspections
- Wolf Creek Emergency Response	
- indoor radon	
- registration of x-ray and other radiation producing devices	2112 regist
Right to Know	
- toxic emission inventory reports	929 reports/yr
- extremely toxic material reports	2401 reports/yr
- support of State Emergency Response Commission (SERC)	

BUREAU OF ENVIRONMENTAL REMEDIATION

MISSION

The Bureau of Environmental Remediation is responsible for remediation of contaminated sites, control of petroleum storage tanks and related remediation, and mined land reclamation.

SECTIONS

PROGRAM DATA

Storage Tanks

- registration and release prevention in Underground Storage Tanks 37,997 tanks
- investigation and remediation of Leaking Underground Storage Tanks 1,056 LUSTs
- management of the Petroleum Storage Tank Remediation Trust Fund, which underwrites LUST remediation \$3.8m reimb 91
\$3.9m reimb 92
\$6.0m proj 93

Remedial

- investigation and identification of contaminated sites 414 sites
- ranking sites in order to target remediation monies
- site remediation as supported by
 - Water Plan Monies 6 sites
 - Superfund Monies 11 sites
- Spill Response 580 spill/yr
- oversight of private party remediations 110 pp remed
23 cons decree/yr

Pre-Remedial

- investigation of sites that may be eligible for Superfund monies 27 invest/yr
- oversight of pre-remedial work by Potential Responsible Parties 1 oversights/yr

Mined Land

- inspection of permitted and active coal mining operations 478 permitted
5 active
- reclamation of mined lands 17 recl proj
- emergency projects 32 invest in 92
65 proj in 93
- emergency investigations 102 in 92
140 proj in 93

BUREAU OF WASTE MANAGEMENT

MISSION

The Bureau of Waste Management is responsible for hazardous and solid waste.

SECTIONS

PROGRAM DATA

Hazardous Waste

- | | |
|---|---------------|
| - hazardous waste storage, treatment, and disposal (tsd) facilities | 22 tsd permit |
| - small quantity generators of hazardous waste (sqq=55lbs/month) | 4,538 sqg |
| - inspection and investigation of major tsd facilities | 51 insp/inv |
| - enforcement actions | 4 actions |
| - hazardous waste complaint invest. | 141 invest |

Solid Waste

- | | |
|--|------------------|
| - implementation of Solid Waste Planning Bill passed in 1992 | |
| - siting, management and closure of sanitary landfills | 130 landfills |
| - household hazardous wastes | 11 programs |
| - waste tire management | 9 grants awarded |
| - inspection and investigation of solid waste facilities | 180 inspect |
| - enforcement actions | 161 complaint |
| | 2 actions |

BUREAU OF WATER

MISSION

The Bureau of Water is responsible for water quality protection, water supply, and nonpoint source pollution prevention.

SECTIONS

PROGRAM DATA

Industrial Program:

- livestock waste disposal systems	2500 permits
- injection wells	1762 wells
- water well contractor	185 licenses
- water well design and construction	6000 plans 5 yr
- industrial wastewater disposal permits	400 permits
- pretreatment of industrial wastewater	40 permits
- which flows into municipal sewer system	
- stormwater permits (potential)	12000 permits

Municipal Program:

- municipal wastewater treatment systems	850 systems
- state revolving loan fund program/yr	10 loans @ (5-60 million)
- municipal sewer extensions/plan approvals	625/yr

Nonpoint Source Program:

- Local Environmental Protection Plans/ grants	89 counties
- Nonpoint Source Control Plan	21 plans
- Environmental Coordination Act & Section 404 reviews/yr	500 reviews

Public Water Supply:

- supply and distribution of public water	1200 systems
- quality of public water (analytical	>100000 reviews
- crossconnection and backflow prevention	600
- expansion/modification permits	350/yr

Technical Services:

- NPDES permit certification	500 certif
- technical advice and assistance to citizens, local govt, business	1200 /yr
- facility performance reviews,	950 inspections
- certified water/wastewater operators	3300

BUREAU OF DISTRICT OPERATIONS

MISSION

The newly-created Bureau of District Operations is responsible for management of district office operations, which are located in Lawrence, Salina, Hays, Chanute, Wichita, and Dodge City.

GOALS

Bureau of District Operations was created with the intent of accomplishing the following goals:

- Forming district offices into free-standing units under the administration of a single district office environmental administrator.
- Placing the six districts beneath a single bureau director.
- Encouraging districts to take a stronger hand in policy development, implementation and light enforcement, as befits the tremendous geological, hydrological and economic conditions across the State.
- Increasing outreach, education and technical assistance at the District Office level.
- Increasing the amount of resources -- staff, equipment and training -- available to District Offices.
- Improving program integration at the local level through multi-media inspections, single point of contact arrangements and other innovative measures.