

MINUTES OF THE HOUSE COMMITTEE ON LOCAL GOVERNMENT.

The meeting was called to order by Chairperson Nancy Brown at 1:30 p.m. on January 25, 1993 in Room 521-S of the Capitol.

All members were present.

Committee staff present: Michael Heim, Legislative Research Department
Theresa Kiernan, Revisor of Statutes
Lois Hedrick, Committee Secretary

Conferees appearing before the committee: Bob McDaneld, Board of Emergency Medical Services
Chip Wheelen, Kansas Medical Society
Tuck Duncan, Medevac Medical Services, Inc.

Others attending: See Guest List (Attachment 1)

Bob McDaneld, Administrator of the Board of Emergency Medical Services, updated the committee on the operations of the agency (Attachment 2); including a description of its program, organization, and certification program for EMS personnel, and listing existing ambulance services in the state. Population demographics were noted to emphasize the ever-changing reorganization of service areas and he noted joint cooperative agreements between areas as a means of providing services. Mr. McDaneld also described the various ground and air response systems now in operation.

Chip Wheelen, Kansas Medical Society, described the existing statutes and protocols for EMS personnel. Beyond those, situations requiring further medical treatment are handled by EMS personnel in charge contacting a physician and/or registered nurse for instruction.

Tuck Duncan, Medevac Medical Services, Inc. of Topeka, stated that fifty percent of EMS services are for non-emergency transport of patients to nursing homes and hospitals. In Kansas, 180 services are publicly operated; 20 are privately operated.

The meeting was adjourned at 2:35 p.m. The next meeting is scheduled for 1:30 p.m., January 26, 1993, in Room 521-S of the State Capitol.

GUEST LISTCOMMITTEE: House Local GovernmentDATE: January 25, 1993

NAME (PLEASE PRINT)	ADDRESS	COMPANY/ORGANIZATION
Chip Wheelen	Topeka	Ks Medical Soc.
Belinda Kennedy	Lakin	Page
Melody Oshel	Deerfield	"
Miss Harrison	Colby	"
Helen Hayzlett	Lakin	Spouse
Cameron Brewer	Topeka	KT LA
Doug SPANGLER	K.C. Ks.	City of K.C. Ks.
TUCK DUNCAN	Topeka	Mediac Medical Services
ALEXANDRA AILDRITT		DAUGHTER OF REP. AILDRITT
		ATTACHMENT 1
		1-25-93



Bob McDanel
Administrator

State of Kansas

BOARD OF EMERGENCY MEDICAL SERVICES

109 S.W. 6TH STREET, TOPEKA, KS 66603-3805

(913) 296-7296 Administration
(913) 296-7403 Education & Training
(913) 296-7299 Examination & Certification
(913) 296-7408 Planning & Regulation

Joan Finney
Governor

EMS PRESENTATION

Bob McDanel
House Local Government Committee
January 25, 1993

- I. Defining Emergency Medical Services
- II. History of Kansas EMS Regulation
 - a. KUMC Emergency Medical Training Program
 - b. BEMS
 - c. funding (1971-1994)
- III. Board
 - a. makeup
 - b. statutory responsibilities
 - c. use of committees
 - d. meetings
- IV. Staff
 - a. director
 - b. section coordinators
 - c. support/technical staff
- V. Board Operations
 - a. planning and regulation
 - 1. regulation of services
 - 2. investigations
 - 3. data collection (EACH demonstration project)
 - 4. state plan
 - 5. technical assistance
 - 6. communications system
 - b. education and training
 - 1. I/C's and training officers
 - 2. approval of initial training programs and CE
 - 3. class monitoring/technical assistance
 - 4. a/v library
 - 5. special projects (interactive video, protocols)
 - c. examination and certification
 - 1. exam process (use of adjunct staff members)
 - 2. initial certification
 - 3. certification renewal
 - 4. legal recognition
 - 5. computer system operation

(Continued on back.)

ATTACHMENT 2-1
1-25-93

- VI. Regional EMS Councils
 - a. history (conduit for federal funds)
 - b. organization
 - c. funding
 - d. activities
- VII. Other EMS Organizations
 - a. KEMTA (Kansas Emergency Medical Technician Association)
 - b. KAEMSA (Kansas Association of EMS Administrators)
 - c. KICS (Kansas Instructor-Coordinator Society)
 - d. KAP (Kansas Association of Paramedics)
- VIII. EMS Terminology
 - a. acronyms
 - b. medical terminology
- IX. EACH Project
 - a. history
 - b. funding
 - c. current activities
- X. Future
 - a. planning for change
 - 1. demographic factors
 - 2. economic factors
 - b. proposed legislation
 - c. communications system

RM/st

ATTACHMENT 22
1-25-93



Bob McDanel
Administrator

State of Kansas

BOARD OF EMERGENCY MEDICAL SERVICES

109 S.W. 6TH STREET, TOPEKA, KS 66603-3805

(913) 296-7296 Administration
(913) 296-7403 Education & Training
(913) 296-7299 Examination & Certification
(913) 296-7408 Planning & Regulation

Joan Finney
Governor

Program Plan

Program Title: Emergency Medical Services

Program Explanation:

The EMS Program is made up of eight areas: (1) regulation of ambulance services; (2) training, examination and certification of instructor/coordinators; and approval of training officers; (3) approval of initial training programs and continuing education program; (4) examination and certification of first responders and ambulance attendants; (5) coordination and maintenance of the EMS communications system; (6) monitoring of state grants for administration of EMS regions; and (7) staff support for the emergency medical services board.

Regulation of all ambulance services primarily includes the issuance of permits to, and inspection of, ambulance services operating in Kansas. Training instructor/coordinators involves the development and delivery of a course of instruction for instructor/coordinators who, upon the endorsement of local communities, apply for training and certification. The board also trains attendants to serve as training officers for their local service. Approval of training programs consists of curriculum approval as well as approval of each program to be trained utilizing that curriculum and approval of all continuing education for ambulance attendants.

The examination and certification of first responders and ambulance attendants involves the written knowledge and practical skills examination of attendant applicants and the certification and annual certification renewal of applicants and attendants respectively. Coordination and maintenance of the EMS communications system involves the regular inspection of all elements of the system and supervision of all maintenance performed on the system. Monitoring of state grants involves the review of expenditures from each of four EMS regions. Staff and budget support for the emergency medical services board primarily involves ensuring the continued operation of the board, a 13 member body appointed by the Governor, which establishes policy guidelines for EMS development and carries out a number of statutory responsibilities. By statute, the EMSB meets six times annually. Each meeting lasts two days.

ATTACHMENT 2-3

1-25-93

Statutory History:

The Emergency Medical Services Board, established by K.S.A. 65-6102 in 1988, assumed the powers, duties, and functions which were separated under the University of Kansas Medical Center and the Bureau of Emergency Medical Services, Kansas Highway Patrol, pertaining to emergency medical services. The statutes were most recently amended in 1991.

Long-Term Trends:

FY 1994 will be the sixth year of the emergency medical service board's operation. In FY 1989 the board moved to new offices and allocated positions were filled. Activities in FY 1990, 1991 and 1992 focused on training programs, specifically improving the quality of attendant training programs in Kansas. Activities in 1993 will continue to focus on modification and validation of the written certification examinations and development of a state plan for emergency medical services.

Beginning in FY 1990, the board has seen a dramatic increase in the number of people taking first responder and ambulance attendant training, then applying for examination and certification. The FY 1992 budget accurately projected this increase. FY 1993 will see an expansion in the number of examination sites and continued modification of the examination process to reduce costs.

FY 1994 programs will build on the activities implemented in FY 1992 and 1993. Changing demographics and economic conditions combined with changes in the health care delivery system may result in the closing of numerous rural hospitals. The development of a state plan for emergency medical services will help ensure emergency medical care continues to be available in rural areas and medical transportation is accessible to all Kansans. In FY 1992 and 1993 the board was actively involved in a statewide project which attempted to ensure access to health care in rural communities. This project (EACH) was a joint project of the Kansas Hospital Association, the Kansas Department of Health & Environment and the Board of Emergency Medical Services. The project may continue in FY 1994 if grant funds are available.

Fifty-one counties are now part of the EMS/UHF communication system. The development and implementation of 800 Mhz "trunking" systems in Wichita and the planning of similar systems in Johnson County and other major metropolitan areas has created a new era of incompatible communication systems which the EMS/UHF system was designed to resolve. This changing technology must be managed in a way which ensures statewide medical communication. The board will be revising the state EMS communications plan in FY 1993 and 1994 and will be proposing modification and expansion of the system in FY 1995.

FY 1992 again showed significant growth in the number of first responder and attendant training programs being submitted for approval. This increase challenged the resources of the Education & Training Section, which lost two positions at the start of the fiscal year as a result of budget cuts and program restructuring. The loss of these positions will continue to restrict the number of class visits made by EMS Specialists to monitor compliance with administrative regulations.

Another area of continued growth has been in regulatory action by the board. The number of investigations increased from nine in FY 1990 to 69 in FY 1992, and continued increases are anticipated in FY 1993 and 1994. The Planning and Regulation Coordinator (Health or Environmental Consultant) was unable to complete revision of the state EMS plan because of additional time needed to manage the necessary regulatory action.

Funding for the regional EMS councils was reduced to \$80,000 in FY 1992 as a result of reduced board funding, and the FY 1993 allocation was reduced to \$79,200 as a result of the 1% cut of all funding in the omnibus bill. Although the FY 1994 budget restores this funding to \$80,000, this is still only two thirds of the FY 1991 funding. The regional councils have made significant changes to reduce administrative costs, but program activity has been reduced as a result of budget cuts.

After careful evaluation of regional funding in FY 1992, the board decided to maintain the FY 1992 regional boundaries and funding distribution. There was no consolidation of regions in FY 1993 as proposed in the FY 1993 budget and considered by the 1992 legislature. No consolidation is proposed in FY 1994.

Program Purpose:

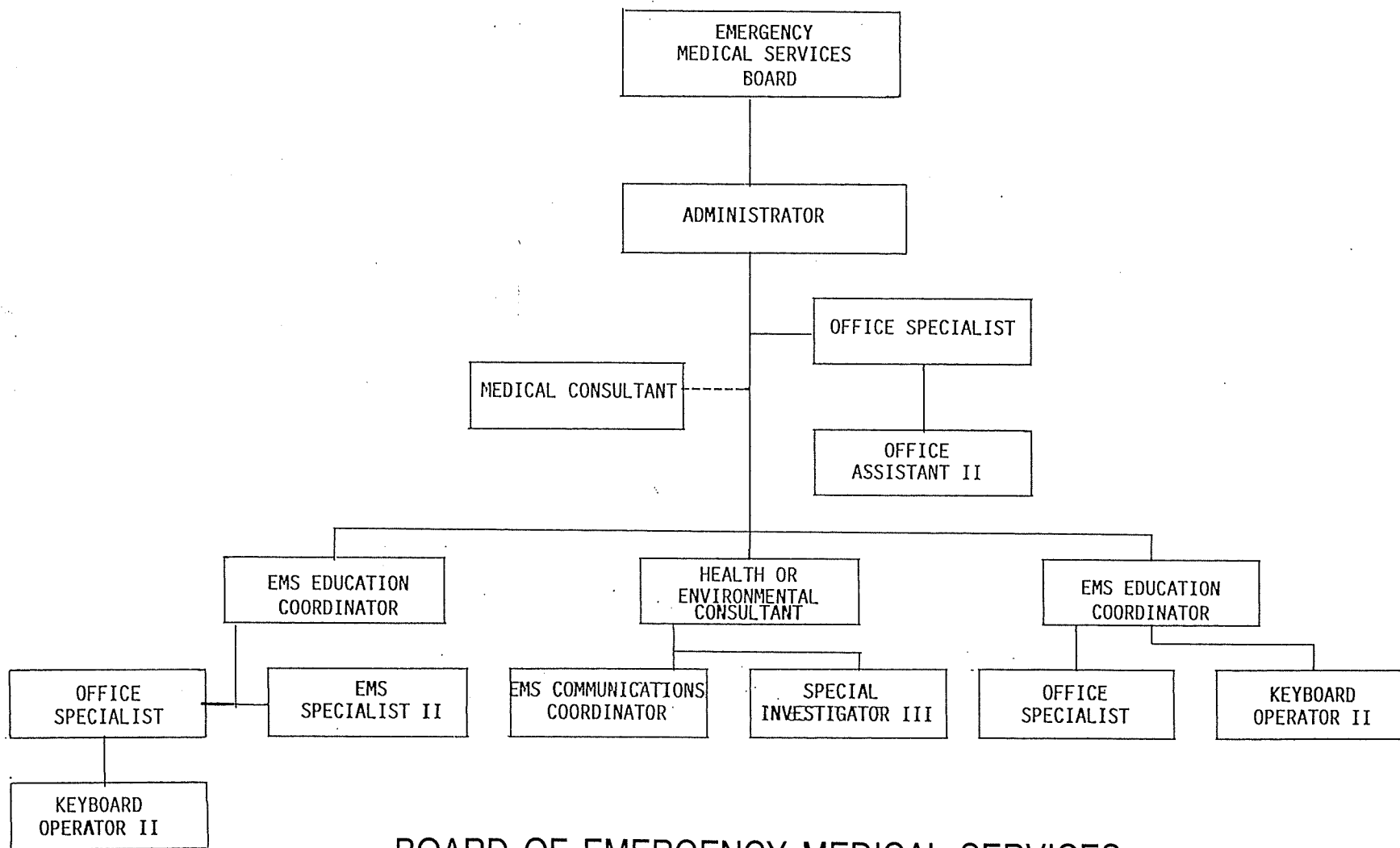
The purpose of the EMS program is to protect the public's health and welfare by assuring appropriate prehospital care and transportation for sick and injured people.

Program Objectives:

1. To ensure compliance with standards by inspecting all ambulance services which have been issued permits to operate in the state and by re-inspecting services when major regulatory violations have been found.
2. To maintain quality of personnel by certifying approximately 2,200 qualified applicants as ambulance attendants and recertifying approximately 8,000 attendants.
3. To periodically test each element of the EMS communications system. Mobile radios will be tested on routine ambulance service inspections.
4. To monitor the expenditures of state funds for EMS regional support by reviewing budgets and expenditures (according to their contracts) submitted from four EMS regional councils.

5. To provide staff support and budget for the Emergency Medical Services Board during six meetings annually and related activities.
6. To provide quality instructors training programs to certify instructor/coordinators and approve training officers.
7. To review, modify, and approve training curriculum to meet the needs of Kansas emergency medical service.
8. To monitor and evaluate initial training and continuing education programs taught in the state.
9. To train and certify new instructor/coordinators as needed.
10. To recertify approximately 160 instructor/coordinators annually.
11. To train and approve approximately 170 training officers annually.

ATTACHMENT 2-6
1-25-93



BOARD OF EMERGENCY MEDICAL SERVICES

**EMERGENCY MEDICAL SERVICES BOARD
BOARD MEMBERSHIP**

**STATUTORY BOARD MEMBERSHIP
REQUIREMENTS**

APPOINTEE/TERM EXPIRES

- | | |
|---|--|
| 1. Kansas Medical Society Member
Actively involved in EMS | Dr. John McMaster
May 31, 1993 |
| 2. County Commissioner
Population Less than 15,000 | Ralph D. Unger
May 31, 1996 |
| 3. County Commissioner
No Specified Population | Vacant
May 31, 1994 |
| 4. Legislator
Appointed by Senate President | Sen. Steve Morris
May 31, 1995 |
| 5. Legislator
Appointed by Senate Minority Leader | Sen. Phil Martin
May 31, 1995 |
| 6. Legislator
Appointed by Speaker of the House | Rep. Nancy J. Brown
May 31, 1992 |
| 7. Legislator
Appointed by House Minority Leader | Vacant
May 31, 1995 |
| 8. Instructor/Coordinator | Marleen Fairchild
May 31, 1994 |
| 9. Hospital Administrator
Actively Involved in EMS | Clyde T. McCracken
May 31, 1993 |
| 10. Member of Firefighting Unit
Unit is Provider of EMS | James W. Befort
May 31, 1995 |
| 11. *Attendant-Actively Involved in EMS
(Must be different classification
than #12 and #13) | Tom Little (MICT)
May 31, 1993 |
| 12. *Attendant-Actively Involved in EMS
(Must be different classification
than #11 and #13) | Lillian Urban (EMT-I)
May 31, 1993 |
| 13. *Attendant-Actively Involved in EMS
(Must be different classification
than #11 and #12) | Thomas Miller (EMT)
Volunteer EMS
May 31, 1994 |

*At least one of the attendants listed under 11, 12, and 13 must be from a volunteer emergency medical services.

brdmembership(1/93)

ATTACHMENT 2-8
1-25-93

TYPES OF EMERGENCY MEDICAL SERVICES CERTIFICATION

FIRST RESPONDER (FR) There are 1557 certified first responders. They complete a 45-70 hour training program and pass a written and practical examination. They have statutory authorization to provide basic first aid and stabilization. These individuals work for law enforcement, rescue squads, and fire services.

EMERGENCY MEDICAL TECHNICIAN (EMT) There are 6245 certified emergency medical technicians. They complete a 120-200 hour training program and pass a written and practical examination. They have statutory authorization to provide basic first aid, insert oropharyngeal airways, apply medical anti-shock trousers, stabilize injuries, and extricate patients. These individuals work for the 180 ambulance services which provide basic life support. Many of them are volunteers. A number of fire departments also train their firefighters as EMTs.

EMERGENCY MEDICAL TECHNICIAN-INTERMEDIATE (EMT-I) There are 628 certified emergency medical technicians-intermediate. A person certified as an EMT may take an additional 40-60 hour training program in intra-venous therapy and pass a written and practical examination. They have statutory authorization to provide all the activities of an EMT, and in addition, provide intra-venous therapy. Most EMTs-I work for volunteer services, although some work as the second attendant on a service which provides advanced life support.

EMERGENCY MEDICAL TECHNICIAN-DEFIBRILLATOR (EMT-D) there are 204 certified emergency medical technicians-defibrillator. A person certified as an EMT may take an additional 27-40 hour training program in manual defibrillation and pass a written and practical examination. They have statutory authorization to provide all the activities of an EMT, and in addition, provide defibrillation and cardiac monitoring of heart attack victims. Most EMTs-D work for volunteer services.

MOBILE INTENSIVE CARE TECHNICIAN (MICT) There are 752 certified mobile intensive care technicians. This is the Kansas term for paramedic. These attendants provide advanced life support, including intra-venous therapy, drug intervention, and manual defibrillation. This level of certification requires a minimum of 1200 hours of training. Most MICTs work for the 20 ambulance services which provide advanced life support. These services are mostly in larger cities (e.g. Wichita, Topeka).

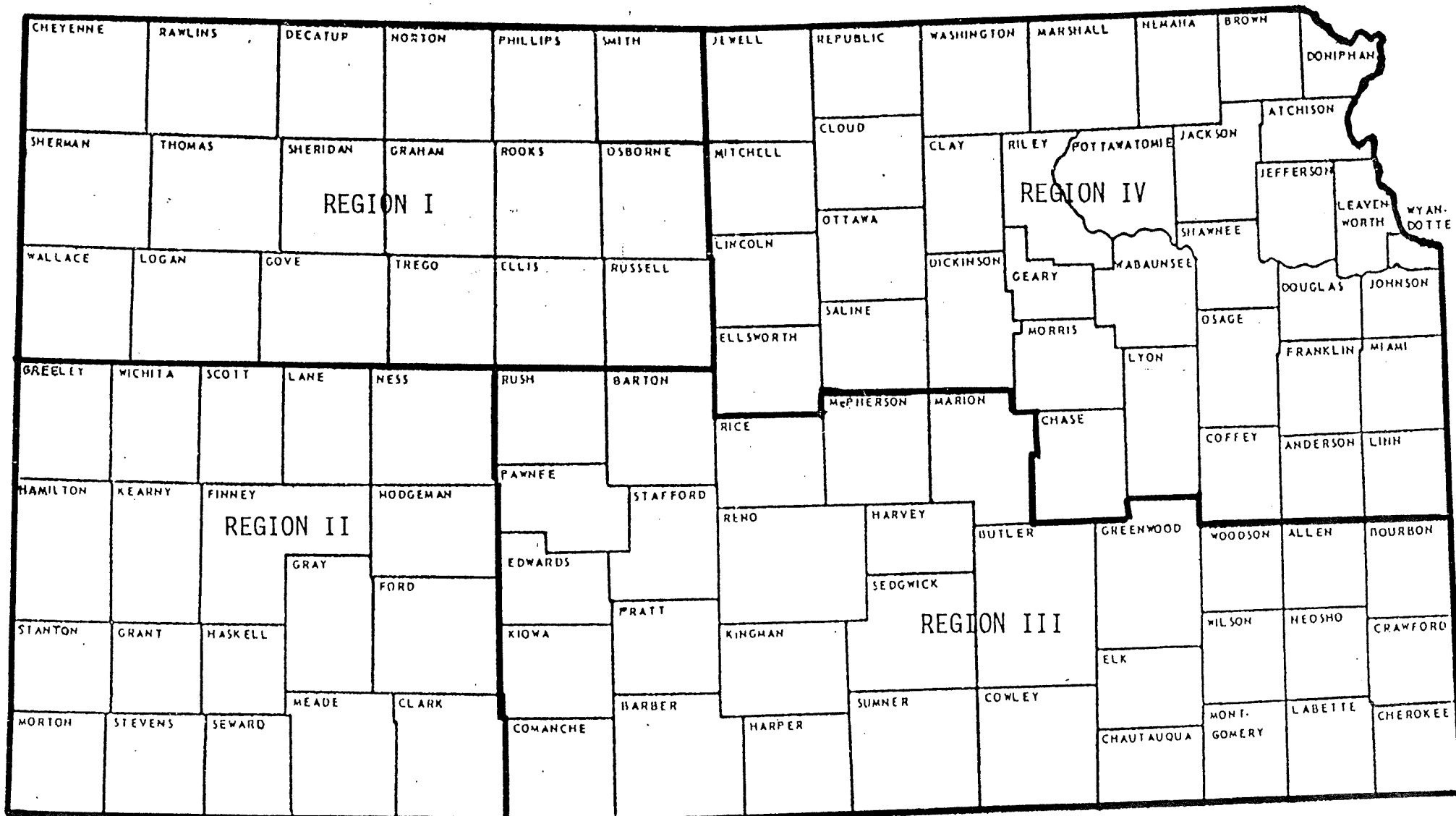
(Continued on next page)

INSTRUCTOR-COORDINATOR (IC) There are 172 certified instructor-coordinators. These are the individuals authorized to teach training programs for first responders and attendants. All instructor-coordinators have to be first certified as an attendant (EMT, EMT-I, EMT-D, OR MICT) and then complete a 90 hour training program. Most instructor-coordinators work full-time in another job and provide training as a part-time job. Many instructor-coordinators are also service directors or work for an ambulance service.

AUTOMATED EXTERNAL DEFIBRILLATOR (AED) This is not a level of certified personnel, but attendants and first responders who complete a four to six hour training program are certified to provide cardiac defibrillation using an automated defibrillator. There are 1807 first responders and attendants certified to use an automated external defibrillator.

RM/jcf

ATTACHMENT 2-10
1-25-93



EMS REGIONS

ATTACHMENT 2-11
1-25-93

MR. JERRY CUNNINGHAM
REGION I EMS COUNCIL
PO BOX 309
PHILLIPSBURG KS 67661

(913) 543-6434

MS. JERRY JO DECKERT, EX. DIR.
REGION II EMS COUNCIL
909 NORTH WILSON
ULYSSES KANSAS 67880

(316) 356-3400

MR. JERREE FORBES
REGION III EMS COUNCIL
HUTCHINSON COMMUNITY COLLEGE
DAVIS HALL - 815 NO. WALNUT
HUTCHINSON KS 67501

(316) 665-4956

MR. ROGER CARSON
REGION IV EMS COUNCIL
540 GRANT AVENUE
JUNCTION CITY KS 66441

(913) 762-2286

ATTACHMENT 2-12
1-25-93

Kansas Board of Emergency Medical Services

Program name: prog#501 File name: service_list

Ambulance Service List

Program date: Tue Jan 5 1993 Time: 11:21:27

AERO MED EXPRESS	Service #: 15
PO BOX 1568-HWY 62 ROGERS MUNC.AIRP	Type: 4A
ROGERS, AR 72757-	
Phone: 501-636-1996	Service director: MOSER, MIKE
ALLEN COUNTY AMBULANCE SERVICE	Service #: 20
408 NORTH WASHINGTON	Type: 2
IOLA, KS 66749-	
Phone: 316-365-2154	Service director: HYDORN, CLARENCE
ANDERSON COUNTY EMS	Service #: 30
421 SOUTH MAPLE	Type: 2
GARNETT, KS 66032-	
Phone: 913-448-3131	Service director: CORWIN, RICHARD
ARGONIA EMS SERVICE	Service #: 50
122 NORTH MAIN	Type: 2
ARGONIA, KS 67004-	
Phone: 316-435-6553	Service director: CLARK, JAMES
ARKANSAS CITY FIRE/EMS DEPARTMENT	Service #: 60
115 SOUTH "D" STREET	Type: 1
ARKANSAS CITY, KS 67005-	
Phone: 316-442-4140	Service director: LONG, R.
ARLINGTON EMS	Service #: 70
104 WEST MAIN - PO BOX 352	Type: 2
ARLINGTON, KS 67514-	
Phone: 316-538-2131	Service director: HAGER, BECKY
ATCHISON FIRE DEPT/AMB (CITY OF)	Service #: 85
218 NORTH 6TH STREET	Type: 2
ATCHISON, KS 66002-	
Phone: 913-367-4329	Service director: MCDERMED, MICHAEL

Ambulance Service List

AXTELL COMMUNITY AMBULANCE SERVICE 400 FOURTH STREET AXTELL, KS 66403- Phone: 913-736-2834	Service #: 110 Type: 2 Service director: RONNEBAUM, MICHAEL
BARBER COUNTY AMBULANCE SERVICE 810 DRUMM STREET KIOWA, KS 67070- Phone: 316-825-4131	Service #: 130 Type: 2 Service director: MCKINNEY JR, BUCK
BELLE PLAINE EMS 401 NORTH MERCHANT BELLE PLAINE, KS 67013- Phone: 316-488-3433	Service #: 140 Type: 2 Service director: MOORE, DEBRA
BENNINGTON AMBULANCE SERVICE 121 NORTH NELSON - BOX 66 BENNINGTON, KS 67422- Phone: 013-488-3767	Service #: 150 Type: 2 Service director: MCCLAIN, JAMES
BOEING COMM. AIRPLANCE GROUP K70-70 3801 SOUTH OLIVER WICHITA, KS 67277-7730 Phone: 316-523-0026	Service #: 170 Type: 2 Service director: LITTLE, CHARLES
BOEVE AMBULANCE SERVICE 139 SIXTH STREET WAKEENEY, KS 67672- Phone: 913-743-2926	Service #: 180 Type: 2 Service director: BOEVE, JOHN
BONNER SPRINGS AMB RESCUE (CITY OF) 205 EAST 2ND - PO BOX 38 BONNER SPRINGS, KS 66012- Phone: 913-422-1020	Service #: 190 Type: 2 Service director: CLAXTON, JOHN
BUHLER AMBULANCE SERVICE 300 NORTH MAIN BUHLER, KS 67522- Phone: 316-543-6572	Service #: 200 Type: 2 Service director: PARROTT, MELVIN
BURDETT EMS (CITY OF) 410 ELM STREET BURDETT, KS 67523- Phone: 316-525-6732	Service #: 210 Type: 2 Service director: EAKIN, PATRICIA
BURRTON AMBULANCE DEPARTMENT 205 NO. BURRTON AVENUE BURRTON, KS 67020- Phone: 316-463-4545	Service #: 220 Type: 2 Service director: REDINGER, LINDA

Ambulance Service List

BUTLER COUNTY EMS 229 NORTH MAIN EL DORADO, KS 67042- Phone: 316-321-7782	Service #: 230 Type: 1 Service director: HELFERICH, GRANT
CANEY AMBULANCE SERVICE (CITY OF) 201 SOUTH STATE CANEY, KS 67333- Phone: 316-879-2772	Service #: 240 Type: 2 Service director: PELL, RICK
CEDAR VALE E.M.S. 504 WALNUT CEDAR VALE, KS 67024- Phone: 316-758-2266	Service #: 250 Type: 2 Service director: LUIS, ALPHA
CENTRAL RUSH COUNTY EMS PO BOX 554 - 119 WEST 9TH LACROSSE, KS 67548- Phone: 913-222-3742	Service #: 260 Type: 2 Service director: KEENER, DAN
CENTRALIA AMBULANCE SERVICE RAILROAD STREET CENTRALIA, KS 66415- Phone: 913-857-3764	Service #: 270 Type: 2 Service director: SCHOBBER, GAYLA
CHASE COUNTY EMS 130 BROADWAY COTTONWOOD FALLS, KS 66845- Phone: 316-273-6362	Service #: 280 Type: 2 Service director: LAUER, WILLIAM
CHEROKEE COUNTY AMB DISTRICT 3 420 EAST 9TH STREET BAXTER SPRINGS, KS 66713- Phone: 316-856-2561	Service #: 300 Type: 2 Service director: MEANS, DONALD
CHEROKEE COUNTY AMBULANCE ASSOC 518 NO KANSAS - PO BOX 307 COLUMBUS, KS 66725- Phone: 316-429-3018	Service #: 290 Type: 2 Service director: MOGLE, DOUGLAS
CHERRYVALE EMS 116 SOUTH NEOSHO CHERRYVALE, KS 67335- Phone: 316-336-2121	Service #: 310 Type: 2 Service director: RAIL, DALE
CHEYENNE COUNTY AMBULANCE 212 EAST WASHINGTON ST. FRANCIS, KS 67756- Phone: 913-332-2844	Service #: 320 Type: 2 Service director: GABEL, LARRY
CLAFLIN AMBULANCE SERVICE ASSOC 208 MAIN STREET CLAFLIN, KS 67525- Phone: 316-587-3498	Service #: 330 Type: 2 Service director: HUBBARD, DOUGLAS

Ambulance Service List

CLARK COUNTY AMBULANCE 709 OAK ASHLAND, KS 67831- Phone: 316-635-2762	Service #: 340 Type: 2 Service director: FUDGE, MILDRED
CLAY COUNTY EMS 603 FOURTH STREET CLAY CENTER, KS 67432- Phone: 913-632-2166	Service #: 350 Type: 2 Service director: KEMP, PAMELA
CLEARWATER EMERGENCY MED SERVICE 117 WEST ROSS CLEARWATER, KS 67026- Phone: 316-584-2311	Service #: 360 Type: 2 Service director: WHITLOW, WAYLAND
CLIFTON CITY AMBULANCE 104 EAST PARALLEL CLIFTON, KS 66937- Phone: 913-455-3711	Service #: 370 Type: 2 Service director: ELSASSER, RONALD
CLYDE COMMUNITY AMBULANCE SERVICE 412 WASHINGTON STREET CLYDE, KS 66938- Phone: 913-446-3300	Service #: 380 Type: 2 Service director: KOCH, TERRY
COFFEY COUNTY EMS PO BOX 189 - 801 NO. 4TH STREET BURLINGTON, KS 66839-0189 Phone: 316-364-2121	Service #: 390 Type: 2 Service director: HIGGINS, JAMES
COFFEYVILLE REG MEDICAL CENTER EMS 1400 WEST FOURTH STREET COFFEYVILLE, KS 67337- Phone: 316-252-1526	Service #: 400 Type: 1 Service director: GOODYEAR, DAVID
COMANCHE COUNTY AMBULANCE SERVICE 201 SOUTH NEW YORK COLDWATER, KS 67029- Phone: 316-582-2591	Service #: 410 Type: 2 Service director: LEHMAN, JOHN
CONCORDIA FIRE DEPT/EMS DIVISION 135 EAST 6TH - BOX 603 CONCORDIA, KS 66901- Phone: 913-243-4411	Service #: 420 Type: 2 Service director: GRAVES, JACK
CONWAY SPRINGS VOLUNTEER EMS 208 WEST SPRING AGVENUE CONWAY SPRINGS, KS 67031- Phone: 316-456-2345	Service #: 440 Type: 2 Service director: HAEHN, COLEEN
CRABLE AMBULANCE SERVICE INC 501 EAST 3RD - PO BOX 338 ESKRIDGE, KS 66423- Phone: 913-449-2221	Service #: 450 Type: 2 Service director: LANGLEY, DEBRA

Ambulance Service List

CRAWFORD COUNTY EMS PO BOX 292 GIRARD, KS 66743- Phone: 316-231-3344	Service #: 460 Type: 2 Service director: COBB, JOSEPH
DECATUR COUNTY AMBULANCE SERVICE 194 SOUTH PENN - PO BOX 28 OBERLIN, KS 67749- Phone: 913-475-2132	Service #: 470 Type: 2 Service director: BARRETT, JOHN
DELPHOS AMBULANCE SERVICE 202 WEST SECOND DELPHOS, KS 67436- Phone: 913-523-4361	Service #: 480 Type: 2 Service director: MCGAVRAN, THOMAS
DIPLOMAT AMBULANCE SERVICE INC 401 SOUTH IDA WICHITA, KS 67211- Phone: 316-264-3600	Service #: 520 Type: 2 Service director: POWELL, WILLIAM
DONIPHAN COUNTY RURAL FIRE DIST 2 GENESEE AND ILLINOIS HIGHLAND, KS 66035- Phone: 913-442-3678	Service #: 500 Type: 2 Service director: CRABTREE, WILLIAM
DOUGLAS COUNTY AMBULANCE SERVICE 225 MAINE LAWRENCE, KS 66044- Phone: 913-843-7777	Service #: 510 Type: 1 Service director: MCFARLANE, THEODORE
EDWARDS COUNTY AMBULANCE 620 WEST 8TH STREET KINSLEY, KS 67547- Phone: 316-659-3621	Service #: 530 Type: 2 Service director: BENNETT, MARILYN
ELK COUNTY AMBULANCE COURTHOUSE - PO BOX 327 HOWARD, KS 67349- Phone: 316-374-2580	Service #: 540 Type: 2 Service director: LEE, JANET
ELLINWOOD FIRE DEPT AMB (CITY OF) 104 EAST SECOND ELLINWOOD, KS 67526- Phone: 316-564-3161	Service #: 550 Type: 2 Service director: HUSLIG, ARTHUR
ELLIS COUNTY EMS 1009 CODY HAYS, KS 67601- Phone: 913-625-5800	Service #: 560 Type: 2 Service director: MCCUE, KERRY
ELLSWORTH COUNTY AMBULANCE BOX 134 - ROUTE 1 ELLSWORTH, KS 67439- Phone: 913-472-3374	Service #: 570 Type: 2 Service director: PFLUGHOEFT, EVELYN

Ambulance Service List

ERIE EMERGENCY CARE UNIT PO BOX 155 ERIE, KS 66733- Phone: 316-244-5657	Service #: 580 Type: 2 Service director: BURNS, JANICE
FINNEY COUNTY EMS 410 EAST WALNUT GARDEN CITY, KS 67846- Phone: 316-272-2280	Service #: 590 Type: 1 Service director: PREWITT, ROBERT
FIRE DISTRICT #11 EMS 421C MARY STREET VALLEY FALLS, KS 66088- Phone: 913-945-3210	Service #: 605 Type: 2 Service director: LOGSDON, JERRY
FLINT HILLS EMERGENCY SERVICES 423 GRAHAM EMPORIA, KS 66801- Phone: 316-343-2326	Service #: 595 Type: 2 Service director: BOWYER, CHRIS
FLORENCE AMBULANCE SERVICE (CTY OF) 515 MAIN FLORENCE, KS 66851- Phone: 316-878-4296	Service #: 600 Type: 2 Service director: MEIROWSKY, MARY
FORD COUNTY EMERGENCY 100 GUNSMOKE AVENUE DODGE CITY, KS 67801- Phone: 316-227-4575	Service #: 610 Type: 2 Service director: WILLIAMSON, JOE
FRANKFORT AMBULANCE SERV (CITY OF) 109 NORTH KANSAS AVENUE FRANKFORT, KS 66427- Phone: 913-292-4240	Service #: 620 Type: 2 Service director: TILLEY, ANNA
FRANKLIN COUNTY AMBULANCE 219 EAST 14TH STREET OTTAWA, KS 66067- Phone: 913-242-5627	Service #: 630 Type: 2 Service director: MCCURDY, TED
FREDONIA REGIONAL AMBULANCE 1527 MADISON FREDONIA, KS 66736- Phone: 316-378-2121	Service #: 640 Type: 2 Service director: BALLARD, JUDY
GLASCO AMBULANCE SERVICE PO BOX 356 GLASCO, KS 67445- Phone: 913-568-2705	Service #: 650 Type: 2 Service director: GRIFFIN, JOHN
GOLD CROSS AMBULANCE 300 SOUTH MAIN INDEPENDENCE, MO 64050- Phone: 816-836-1594	Service #: 660 Type: 2 Service director: WILLIG, MICHAEL

Ambulance Service List

GRAHAM COUNTY EMS 722 WEST MAIN HILL CITY, KS 67642- Phone: 913-674-3455	Service #: 670 Type: 2 Service director: POMMEREHN, JAMES
GRANT COUNTY AMBULANCE SERVICE 320 E. OKLAHOMA ST. - PO BOX 514 ULYSSES, KS 67880- Phone: 316-356-3400	Service #: 680 Type: 2 Service director: KEUSLER, KENNETH
GRAY COUNTY EMS 101 WEST AVENUE "D" CIMARRON, KS 67835- Phone: 316-855-7731	Service #: 690 Type: 2 Service director: HOGAN, THOMAS
GREAT BEND FIRE/EMS DEPT (CITY OF) 1205 WILLIAMS GREAT BEND, KS 67530- Phone: 316-793-4140	Service #: 700 Type: 2 Service director: MEISINGER, RICHARD
GREELEY COUNTY AMBULANCE PO BOX 280 TRIBUNE, KS 67879- Phone: 316-376-4967	Service #: 710 Type: 2 Service director: BABER, CHRISTINA
GREENLEAF AMBULANCE SERVICE 504 COMMERCIAL GREENLEAF, KS 66943- Phone: 913-747-2858	Service #: 720 Type: 2 Service director: BLANKEN, ARMIN
GREENWOOD COUNTY AMBULANCE SERVICE 400 SO JEFFERSON - PO BOX 51 EUREKA, KS 67045- Phone: 316-583-6885	Service #: 730 Type: 2 Service director: COX, VIRGIL
GYPSUM VALLEY EMS 521 MAPLE STREET GYPSUM, KS 67448- Phone: 913-536-4296	Service #: 740 Type: 2 Service director: VERNON, STEVEN
HALSTEAD EMS (CITY OF) 303 MAIN HALSTEAD, KS 67056- Phone: 316-835-3381	Service #: 750 Type: 2 Service director: EGGLESTON, STACEY
HAMILTON COUNTY EMS EAST AVENUE "G" SYRACUSE, KS 67878- Phone: 316-384-7461	Service #: 760 Type: 2 Service director: HENRY, JANET
HANSTON RURAL FIRE DEPARTMENT 106 NORTH LOGAN HANSTON, KS 67849- Phone: 316-623-4246	Service #: 810 Type: 2 Service director: KLEIN, ROBERT

Ambulance Service List

HARPER EMS 115 EAST MAIN HARPER, KS 67058- Phone: 316-896-2911	Service #: 770 Type: 2 Service director: COATS, WILLIAM
HAVEN COMMUNITY EMS MAIN AND KANSAS AVENUE HAVEN, KS 67543- Phone: 316-465-3618	Service #: 780 Type: 2 Service director: HARDIN, MONTE
HESSTON AMBULANCE DEPARTMENT 115 EAST SMITH - PO BOX 100 HESSTON, KS 67062- Phone: 316-327-4412	Service #: 790 Type: 2 Service director: TOEWS, RICHARD
HODGEMAN COUNTY AMBULANCE PO BOX 185 JETMORE, KS 67854- Phone: 316-357-8500	Service #: 800 Type: 2 Service director: HARMS, GORDON
HOISINGTON AMBULANCE SERVICE PO BOX 418 109 EAST FIRST STREET HOISINGTON, KS 67544- Phone: 316-653-4995	Service #: 820 Type: 2 Service director: BLAZEK, RHONDA
HORTON COMMUNITY HOSPITAL AMBULANCE 240 WEST 18TH STREET HORTON, KS 66439 Phone: 913-486-2642	Service #: 830 Type: 2 Service director: OBBARDS, LINDA
HUCKABY AMBULANCE INC 40 SOUTH 18TH STREET KANSAS CITY, KS 66102- Phone: 913-371-2629	Service #: 840 Type: 2 Service director: HUCKABY, SHIRLEY
INDEPENDENCE EMS 120 NORTH SIXTH STREET INDEPENDENCE, KS 67301- Phone: 316-331-4357	Service #: 850 Type: 2 Service director: LACORE, REX
JACKSON COUNTY EMS INC 214 EAST 5TH STREET HOLTON, KS 66436- Phone: 913-364-4555	Service #: 860 Type: 2 Service director: MAYHEW, TERRI
JEFFERSON COUNTY AMBULANCE SERVICE 507 DELAWARE - PO BOX 423 OSKALOOSA, KS 66066- Phone: 913-863-2351	Service #: 870 Type: 2 Service director: DAILEY, DANNY
JEWELL COUNTY EMS 100 A CRESTVUE MANKATO, KS 66956- Phone: 913-378-3221	Service #: 890 Type: 2 Service director: SWITZER, DANIEL

Ambulance Service List

JOHNSON COUNTY MED ACT JO CO.SQUARE #0300-111 SO. CHERRY OLATHE, KS 66061-3441 Phone: 913-764-8484	Service #: 900 Type: 1 Service director: PRESS, MICHAEL
JUNCTION CITY-GEARY CO AMB SERVICE PO BOX 287 - 701 NORTH JEFFERSON ST JUNCTION CITY, KS 66441- Phone: 913-238-2111	Service #: 910 Type: 2 Service director: MCPHERON, ROBERT
KANSAS AIR LIFE 1640 SOUTH AIRPORT ROAD WICHITA, KS 67209- Phone: 316-943-4455	Service #: 930 Type: 1A Service director: MCELROY, DONALD
KEARNY COUNTY EMS 500 THORPE LAKIN, KS 67860- Phone: 316-355-7111	Service #: 940 Type: 2 Service director: BARNES, VERNON
KINGMAN EMS 332 NORTH MAIN STREET KINGMAN, KS 67068- Phone: 316-352-5624	Service #: 950 Type: 2 Service director: HART III, IRA
KIOWA COUNTY AMBULANCE SERVICE 501 SOUTH WALNUT GREENSBURG, KS 67054- Phone: 316-723-3341	Service #: 960 Type: 2 Service director: SCRONCE, ARLENE
KS CITY FIRE DEPT/DIV OF EMS KARE 815 NORTH SIXTH STREET KANSAS CITY, KS 66101-2876 Phone: 913-573-5550	Service #: 920 Type: 1 Service director: THORP, FREDDIE
LABETTE COUNTY EMS 315 NORTH 16TH - BOX 1012 PARSONS, KS 67357- Phone: 316-421-2401	Service #: 970 Type: 2 Service director: NICOLL, DAVID
LANE COUNTY AMBULANCE SERVICE BOX 788 - 144 SOUTH LANE DIGHTON, KS 67839- Phone: 316-397-2828	Service #: 980 Type: 2 Service director: MCGOWAN, LAWRENCE
LARNED EMERGENCY MED SERV (CITY OF) 417 BROADWAY - PO BOX 70 LARNED, KS 67550- Phone: 316-285-2149	Service #: 990 Type: 2 Service director: HALL, MAURICE

Ambulance Service List

LEAVENWORTH CO SKILLED TRANSFER SER 2815 SOUTH 4TH ST. TRAFFICWAY LEAVENWORTH, KS 66048- Phone: 913-684-0788	Service #: 1000 Type: 2 Service director: KASPER, LORIN
LEAVENWORTH COUNTY EMS 2815 SOUTH 4TH STREET TRAFFICWAY LEAVENWORTH, KS 66048- Phone: 913-684-0788	Service #: 1010 Type: 1 Service director: KASPER, LORIN
LEAWOOD RESCUE SQUAD 9609 LEE BLVD. LEAWOOD, KS 66206- Phone: 913-642-4433	Service #: 1020 Type: 2 Service director: STRACK, JERRY
LENEXA FIRE DEPARTMENT (CITY OF) 9620 PFLUMM LENEXA, KS 66215- Phone: 913-888-6380	Service #: 1030 Type: 2 Service director: HOBBS, KENNETH
LEOTI EMS 301 NORTH FOURTH STREET LEOTI, KS 67861- Phone: 316-375-4732	Service #: 1040 Type: 2 Service director: RITTER, MICHAEL
LEVIN'S AMBULANCE SERVICE 117 NORTH MAIN SMITH CENTER, KS 66967- Phone: 913-282-3265	Service #: 1050 Type: 2 Service director: LEVIN, ROBERT
LIFEGUARD OF OSAGE COUNTY 635 MARKET STREET OSAGE CITY, KS 66523- Phone: 913-528-4116	Service #: 1060 Type: 2 Service director: GOODING, SEAN
LIFEWATCH 550 NORTH HILLSIDE WICHITA, KS 67214- Phone: 316-688-7368	Service #: 1070 Type: 5 Service director: TRUJILLO JR, CARLOS
LINCOLN COUNTY AMBULANCE SERVICE 216 EAST LINCOLN LINCOLN, KS 67455- Phone: 913-524-4653	Service #: 1080 Type: 2 Service director: KINGAN, BRET
LINDSBORG EMS 102 SOUTH FIRST LINDSBORG, KS 67456- Phone: 913-227-2988	Service #: 1090 Type: 2 Service director: MITCHELL, JOANNE
LINN CITY AMBULANCE SERVICE CITY HALL - FIFTH STREET LINN, KS 66953- Phone: 913-348-5378	Service #: 1100 Type: 2 Service director: HERDA, JAMES

Ambulance Service List

LINN COUNTY AMBULANCE 611 CEDAR - BOX 777 PLEASANTON, KS 66075- Phone: 913-352-6278	Service #: 1110 Type: 2 Service director: ROWE, CHARLES
LOGAN COUNTY EMS 211 CHERRY OAKLEY, KS 67748- Phone: 913-672-3211	Service #: 1120 Type: 2 Service director: KOHN, ERIC
LYON COUNTY/CITY OF EMPORIA PO BOX 928 EMPORIA, KS 66801- Phone: 316-342-5105	Service #: 1130 Type: 2 Service director: CARSON, ROGER
MAC AIR CORPORATION 1000 SOUTH 81 BYPASS - BOX 189 MCPHERSON, KS 67460- Phone: 316-241-0684	Service #: 1140 Type: 4A Service director: BRITTING, JOHN
MACKSVILLE EMERGENCY MED SERV INC 304 NORTH GILMORE MACKSVILLE, KS 67557- Phone: 316-348-4231	Service #: 1150 Type: 2 Service director: MYERS, ANITA
MARION COUNTY EMS COURTHOUSE ANNEX - PO BOX 282 MARION, KS 66861- Phone: 316-382-3271	Service #: 1160 Type: 2 Service director: KNAK, JOANN
MARQUETTE AMBULANCE SERVICE 428 NORTH WASHINGTON - PO BOX 26 MARQUETTE, KS 67464- Phone: 913-546-2443	Service #: 1170 Type: 2 Service director: HENRY, EDWARD
MARYSVILLE AMBULANCE SERVICE 504 NORTH 12TH STREET MARYSVILLE, KS 66508- Phone: 913-562-2359	Service #: 1180 Type: 2 Service director: HIGHT, JOY
MCPHERSON COUNTY RFD#1 - AMBULANCE 201 SOUTH MAIN CANTON, KS 67428- Phone: 316-628-4615	Service #: 1190 Type: 2 Service director: WEBSTER, DILLARD
MCPHERSON EMS 1000 HOSPITAL DRIVE MCPHERSON, KS 67460- Phone: 316-241-2250	Service #: 1200 Type: 1 Service director: EASTER, RANDY
MEADE COUNTY EMS 218 EAST CARTHAGE - PO BOX 370 MEADE, KS 67864- Phone: 316-873-5421	Service #: 1210 Type: 2 Service director: FRIESEN, GALEN

Ambulance Service List

MED TECH INC #1 NORTH VERMONT OSWEGO, KS 67356- Phone: 316-795-2594	Service #: 1220 Type: 2 Service director: HAZEN, MARK
MEDEVAC MIDAMERICA 401 SOUTH JACKSON TOPEKA, KS 66603-3327 Phone: 913-233-2400	Service #: 1230 Type: 1 Service director: SZCZYGIEL, MICHAEL
MEDEVAC MIDAMERICA OF KANSAS INC 2555 SOUTH FERREE KANSAS CITY, KS 66105 Phone: 913-262-7800	Service #: 1235 Type: 1 Service director: WECKWERTH, MICHAEL
MEDI-SERVICE OF LEAVENWORTH 709 DELAWARE - PO BOX 22 LEAVENWORTH, KS 66048- Phone: 913-682-3456	Service #: 1240 Type: 2 Service director: PEARSON, DENNIS
MEDICINE LODGE MEMORIAL HOSP AMB 710 NORTH WALNUT MEDICINE LODGE, KS 67104- Phone: 316-886-3771	Service #: 1250 Type: 2 Service director: WHITE, KEVIN
MEMORIAL HOSPITAL EMS 511 NE 10TH STREET ABILENE, KS 67410- Phone: 913-263-2100	Service #: 1260 Type: 2 Service director: MORABITO, DAN
MERCY EMS 821 BURKE STREET FT. SCOTT, KS 66701- Phone: 316-223-2200	Service #: 1280 Type: 2 Service director: DEPRATT, BETH
MERRIAM FIRE DEPARTMENT 9000 WEST 62ND TERRACE MERRIAM, KS 66202- Phone: 913-432-7058	Service #: 1270 Type: 2 Service director: MONTGOMERY, GERALD
MIAMI COUNTY EMS 501 SOUTH HOSPITAL DRIVE PAOLA, KS 66071- Phone: 913-294-5010	Service #: 1290 Type: 2 Service director: WELTER, MICHAEL
MILTONVALE AMBULANCE SERVICE 107 STARR AVENUE MILTONVALE, KS 67466- Phone: 913-427-3380	Service #: 1300 Type: 2 Service director: TURNER, WAINE

Ambulance Service List

MINNEAPOLIS AMBULANCE SERVICE 218 NORTH ROCK STREET MINNEAPOLIS, KS 67467- Phone: 913-392-2176	Service #: 1310 Type: 2 Service director: JOHNSON, ROBERT
MITCHELL COUNTY EMS 114 SO. CAMPBELL - PO BOX 393 BELOIT, KS 67420- Phone: 913-738-6437	Service #: 1320 Type: 2 Service director: GATES, ARLEN
MORRIS COUNTY EMS 606 NORTH WASHINGTON COUNCIL GROVE, KS 66846- Phone: 316-767-6115	Service #: 1330 Type: 2 Service director: HULTGREN, JOHN
MORTON COUNTY EMS 722 SOUTH STEVENS ELKHART, KS 67950- Phone: 316-697-4251	Service #: 1340 Type: 2 Service director: PRIEST, LYNN
MOUNDRIDGE AMBULANCE SERVICE 225 SOUTH CHRISTIAN - PO BOX 636 MOUNDRIDGE, KS 67107- Phone: 316-345-8246	Service #: 1350 Type: 2 Service director: HAMMAR, DAVID
MT. HOPE COMMUNITY AMBULANCE SERV EAST MAIN - BOX 114 MT. HOPE, KS 67108- Phone: 316-667-2471	Service #: 1360 Type: 2 Service director: EISENHAUER, BERNICE
MULVANE EMS 507 NORTH FIRST MULVANE, KS 67110- Phone: 316-777-1551	Service #: 1370 Type: 2 Service director: WELCH, ROBERT
NEODESHA AMBULANCE SERVICE 113 SOUTH FIFTH STREET NEODESHA, KS 66757- Phone: 316-325-2828	Service #: 1390 Type: 2 Service director: REYNOLDS, CHARLES
NEOSHO MEM.REG.MED.CTR.AMB.SERVICE 629 SOUTH PLUMMER CHANUTE, KS 66720- Phone: 316-431-4000	Service #: 1400 Type: 2 Service director: WHITING, RAYMOND
NESS COUNTY AMBULANCE 312 E. CUSTER NESS CITY, KS 67560- Phone: 913-798-2291	Service #: 1410 Type: 2 Service director: MCCracken, CLYDE
NEWTON KS AMBULANCE DEPT (CITY OF) 200 EAST THIRD NEWTON, KS 67114- Phone: 316-284-6060	Service #: 1420 Type: 1 Service director: WERRIES, JIM

Ambulance Service List

NORTH NESS COUNTY EMS 330 VERMONT - PO BOX 268 RANSOM, KS 67572- Phone: 913-731-2712	Service #: 1430 Type: 2 Service director: BERRY, CLARINDA
NORTHWEST KANSAS AMBULANCE SERVICE 250 WEST SECOND GOODLAND, KS 67735- Phone: 913-899-3625	Service #: 1440 Type: 2 Service director: HOOKER, KAREN
NORTON COUNTY AMBULANCE SERVICE PO BOX 70 - 809 NO. NORTON ST. NORTON, KS 67654- Phone: 913-877-5211	Service #: 1450 Type: 2 Service director: HOPPES, CLAIRENE
NORWICH AMBULANCE 226 SOUTH MAIN - BOX 225 NORWICH, KS 67118- Phone: 316-478-2221	Service #: 1460 Type: 2 Service director: SMITH, JAN
OSBORNE COUNTY EMS 423 WEST MAIN OSBORNE, KS 67473- Phone: 913-346-2379	Service #: 1470 Type: 2 Service director: HAWK, LOWELL
OTIS RESCUE SQUAD MAIN AND LAURA OTIS, KS 67565- Phone: 913-387-2289	Service #: 1480 Type: 2 Service director: SCHNEIDER, HARRY
OVERLAND PARK FIRE DEPARTMENT 9550 WEST 95TH STREET OVERLAND PARK, KS 66212- Phone: 913-888-6066	Service #: 1490 Type: 2 Service director: JAHNKE, WILLIAM
PALCO AMBULANCE SERVICE 504 MAIN STREET PALCO, KS 67657- Phone: 913-737-4285	Service #: 1500 Type: 2 Service director: PALMBERG, RANDY
PHILLIPS COUNTY EMS 409 "E" STREET PHILLIPSBURG, KS 67661- Phone: 913-543-6434	Service #: 1510 Type: 2 Service director: CUNNINGHAM, MARY
PLAINVILLE AMBULANCE SERVICE SW 9TH STREET PLAINVILLE, KS 67663- Phone: 913-434-2818	Service #: 1530 Type: 2 Service director: VANHOOSE, PHYLLIS

Ambulance Service List

POTTAWATOMIE COUNTY AMB SERV (SM) 512 WEST BERTRAND ST. MARYS, KS 66536- Phone: 913-437-6525	Service #: 1540 Type: 2 Service director: RAINE, MICHAEL
POTTAWATOMIE COUNTY EMS - ONAGA 120 WEST 8TH STREET ONAGA, KS 66521- Phone: 913-889-4271	Service #: 1560 Type: 2 Service director: RAINE, MICHAEL
POTTAWATOMIE COUNTY EMS - WAMEGO 711 GENN DRIVE WAMEGO, KS 66547- Phone: 913-456-2295	Service #: 1550 Type: 2 Service director: SCHNEIDER, MARTIN
PRATT COUNTY EMS 1001 EAST FIRST PRATT, KS 67124- Phone: 316-672-7395	Service #: 1570 Type: 2 Service director: MCMANAMAN, MARK
PRETTY PRAIRIE AMBULANCE SERVICE 204 WEST MAIN PRETTY PRAIRIE, KS 67570- Phone: 316-459-6392	Service #: 1580 Type: 2 Service director: ALBRIGHT, BRENDA
QUINTER VOLUNTEER AMBULANCE SERVICE 411 MAIN QUINTER, KS 67752- Phone: 913-754-3734	Service #: 1590 Type: 2 Service director: JAMISON, LOREN
RAWLINS COUNTY AMBULANCE SERVICE PO BOX 183 ATWOOD, KS 67730- Phone: 913-626-3144	Service #: 1600 Type: 2 Service director: BROWN, DAVID
RENO CO EMS/HUTCHINSON HOSPITAL AMB 1701 EAST 23RD HUTCHINSON, KS 67502- Phone: 316-665-2120	Service #: 1610 Type: 1 Service director: MILLER, RANDALL
REPUBLIC COUNTY EMS ROUTE 2 - BOX 108 BELLEVILLE, KS 66935- Phone: 913-527-7149	Service #: 1620 Type: 2 Service director: LIEB, SUSAN
RESEARCH EAGLE AIR AMBULANCE 2316 EAST MEYER BLVD. KANSAS CITY, MO 64132- Phone: 816-276-3150	Service #: 1630 Type: 5 Service director: DUFFEY, TERRY
RICE COUNTY AMBULANCE SERVICE PO BOX 505 - 710 SOUTH MILES LYONS, KS 67554- Phone: 316-257-5200	Service #: 1640 Type: 2 Service director: SUNLEY, ROGER

Ambulance Service List

RILEY COUNTY EMS 2011 CLAFLIN ROAD MANHATTAN, KS 66502- Phone: 913-539-3535	Service #: 1650 Type: 1 Service director: COUCHMAN, LARRY
ROESCH AVIATION INC. ROUTE 1 - BOX 295 COLBY, KS 67701- Phone: 913-462-2647	Service #: 1660 Type: 4A Service director: ROESCH, CHARLES
RUSH COUNTY AMBULANCE DISTRICT #1 MAIN STREET MCCRACKEN, KS 67556- Phone: 913-394-2555	Service #: 1670 Type: 2 Service director: HOUSE, ROBERT
RUSSELL REGIONAL HOSPITAL EMS 200 SOUTH MAIN RUSSELL, KS 67665- Phone: 913-483-3131	Service #: 1680 Type: 2 Service director: KNAK, ROGER
SABETHA EMS 1205 COLORADO SABETHA, KS 66534- Phone: 913-284-3481	Service #: 1690 Type: 2 Service director: EMERT, DAVID
SALINA FIRE DEPARTMENT 222 WEST ELM SALINA, KS 67401- Phone: 913-826-7340	Service #: 1700 Type: 1 Service director: KNOTT, RONNIE
SATANTA AMBULANCE SERVICE BOX 95 SATANTA, KS 67870- Phone: 316-649-2761	Service #: 1710 Type: 2 Service director: COLLINS, MARGE
SCOTT COUNTY AMBULANCE SERVICE 310 EAST 3RD STREET SCOTT CITY, KS 67871- Phone: 316-872-5811	Service #: 1720 Type: 2 Service director: TURPIN, LARRY
SEDAN AMBULANCE SERVICE (CITY OF) 109 NORTH CHAUTAUQUA SEDAN, KS 67361- Phone: 316-725-3193	Service #: 1730 Type: 2 Service director: SPURLOCK, GARY
SEDGWICK AMBULANCE SERVICE (CTY OF) 511 NORTH COMMERCIAL SEDGWICK, KS 67135- Phone: 316-772-5151	Service #: 1740 Type: 2 Service director: HOOPER, MICHAEL
SEDGWICK COUNTY EMS PO BOX 607 - 538 NORTH MAIN WICHITA, KS 67201-0607 Phone: 316-383-7994	Service #: 1750 Type: 1 Service director: POLLAN, THOMAS

Ambulance Service List

SENECA AMBULANCE SERVICE (CITY OF) 531 MAIN - PO BOX 40 SENECA, KS 66538- Phone: 913-336-2747	Service #: 1760 Type: 2 Service director: HAUG, ELIZABETH
SEWARD COUNTY EMS PO BOX 1627 LIBERAL, KS 67901- Phone: 316-626-3275	Service #: 1770 Type: 1 Service director: HADSELL, ROBERT
SHERIDAN COUNTY AMBULANCE 940 EIGHTH STREET HOXIE, KS 67740- Phone: 913-675-3361	Service #: 1790 Type: 2 Service director: OELKE, JOHNNIE
SJMC NEONATAL TRANSPORT SERVICE 3600 EAST HARRY WICHITA, KS 67218- Phone: 316-689-6450	Service #: 1800 Type: 5 Service director: DORSEY, MICHAEL
SOUTH JOHNSON CO. VOL.FIRE & RESCUE 19495 METCALF STILWELL, KS 66085- Phone: 913-681-2764	Service #: 1805 Type: 2 Service director: MORRISON, EDDIE
SOUTHEAST DICKINSON COUNTY EMS 100 EAST HELEN HERINGTON, KS 67449- Phone: 913-258-2470	Service #: 1810 Type: 2 Service director: EDWARDS II, JAMES
SPIRIT OF KANSAS CITY LIFE FLIGHT 1000 CARONDELET DRIVE KANSAS CITY, MO 64114- Phone: 816-943-2584	Service #: 1820 Type: 5 Service director: PRIBYL, CATHY
ST. FRANCIS HOSPITAL 929 NORTH ST. FRANCIS WICHITA, KS 67203- Phone: 316-268-8581	Service #: 1715 Type: 2 Service director: LEWIS, JAMES
ST. JOHN DISTRICT #1 EMS 609 EAST FIRST ST. JOHN, KS 67576- Phone: 316-549-6330	Service #: 1845 Type: 2 Service director: TOMPKINS, DORIS
STAFFORD HOSPITAL E.M.S. 502 SOUTH BUCKEYE STAFFORD, KS 67578- Phone: 316-234-5221	Service #: 1850 Type: 2 Service director: MCLEISH, LYNNE

Ambulance Service List

STANTON COUNTY AMBULANCE 208 NORTH CHESTNUT JOHNSON, KS 67855- Phone: 316-492-6866	Service #: 1860 Type: 2 Service director: GARRISON, JAMES
STEVENS COUNTY AMBULANCE 109 NORTHWEST AVENUE HUGOTON, KS 67951- Phone: 316-544-2562	Service #: 1880 Type: 2 Service director: HATFIELD, JAMES
STOCKTON AMBULANCE SERVICE 115 SOUTH WALNUT STOCKTON, KS 67669- Phone: 913-425-6703	Service #: 1890 Type: 2 Service director: MADDY, MAXINE
SUBLETTE EMS PO BOX 980 SUBLETTE, KS 67877- Phone: 316-675-2719	Service #: 1900 Type: 2 Service director: ORTH, ROBERT
SUMNER CO HOSP DIST #1 AMB SERVICE 601 SOUTH OSAGE CALDWELL, KS 67022- Phone: 316-845-6492	Service #: 1910 Type: 2 Service director: HUTSLER, TOMMIE
SUPERIOR EMS 448 SOUTH PATTIE WICHITA, KS 67211- Phone: 316-265-3685	Service #: 1920 Type: 2 Service director: BELL, CHUCK
T.A.C. - TRANS AMBULANCE CORP PO BOX 492 SALINA, KS 67401- Phone: 913-823-3862	Service #: 1930 Type: 2 Service director: SHULER, THOMAS
TESCOTT AREA AMBULANCE 109 NORTH MAIN STREET TESCOTT, KS 67484- Phone: 913-283-4337	Service #: 1940 Type: 2 Service director: HUTCHINSON, JOHN
THOMAS COUNTY EMS 1275 SOUTH FRANKLIN COLBY, KS 67701- Phone: 913-462-4585	Service #: 1950 Type: 2 Service director: CAVE, JAMES
TOPEKA AIR AMBULANCE - LIFE STAR PO BOX 19224 TOPEKA, KS 66619- Phone: 913-862-5433	Service #: 1960 Type: 5 Service director: HILDENBRAND, GREG
TOWN & COUNTRY AMBULANCE SERVICE 110 NO. SECOND - PO BOX 456 HIAWATHA, KS 66434- Phone: 913-742-2314	Service #: 1970 Type: 2 Service director: REIGLE, LANA

Ambulance Service List

TROY COMMUNITY AMBULANCE Service #: 1980
137 WEST WALNUT - BOX 506 Type: 2
TROY, KS 66087-
Phone: 913-985-2101 Service director: O'DONNELL, THOMAS

UNIV OF KS MED CTR-MOBILE NEO ICU Service #: 2000
39TH AND RAINBOW BLVD Type: 5
KANSAS CITY, KS 66103-
Phone: 913-588-2139 Service director: COBB, DAVID

WABAUNSEE COUNTY DISTRICT #3 INC Service #: 2020
300 OHIO STREET Type: 2
ALMA, KS 66401-
Phone: 913-765-3913 Service director: GENTRY, GALEN

WALLACE COUNTY AMBULANCE INC Service #: 2030
313 NORTH MAIN STREET Type: 2
SHARON SPRINGS, KS 67758-
Phone: 913-852-4282 Service director: SCHMIDT, NANCY

WASHINGTON AMBULANCE (CITY OF) Service #: 2040
301 "C" STREET - BOX 296 Type: 2
WASHINGTON, KS 66968-
Phone: 913-325-2284 Service director: GIBBS, MEYLER

WASHINGTON COUNTY HOSPITAL DIST #1 Service #: 2050
205 SOUTH HANOVER Type: 2
HANOVER, KS 66945-
Phone: 913-337-2214 Service director: MUELLER, PATRICIA

WATERVILLE AMBULANCE SERVICE Service #: 2060
209 EAST COMMERICAL Type: 2
WATERVILLE, KS 66548-
Phone: 913-785-2203 Service director: STEENSON, SHARON

WELLINGTON FIRE AND EMS DEPARTMENT Service #: 2070
217 NORTH JEFFERSON Type: 2
WELLINGTON, KS 67152-
Phone: 316-326-7443 Service director: LLOYD, JOHN

WESTMORELAND AMBULANCE SERVICE Service #: 2090
202 MAIN STREET Type: 2
WESTMORELAND, KS 66549-
Phone: 913-457-3624 Service director: MOORE, ELNA

WINFIELD AREA EMS Service #: 2100
1300 EAST FIFTH STREET Type: 1
WINFIELD, KS 67156-
Phone: 316-221-2300 Service director: ELLIOTT, JOHN

Ambulance Service List

WOODSON COUNTY AMBULANCE SERVICE Service #: 2110
105 WEST RUTLEDGE - COURTHOUSE Type: 2
YATES CENTER, KS 66783-
Phone: 316-625-2135 Service director: STEWART, TOMMY

Total services: 200
Ambulance service list.
Alphabetical order.
Date: Tue Jan 5 1993
Time: 11:21:27