

MINUTES OF THE HOUSE AGING & LONG-TERM CARE COMMITTEE

The meeting was called to order by Chairman Bob Bethell at 9:06 am. on March 15, 2011, in Room 144-S of the Capitol.

All members were present except:

Representative Scott Schwab – excused
Representative Kay Wolf – excused
Representative Weber - excused
Representative Henderson - excused

Committee staff present:

Katherine McBride, Office of Revisor of Statutes
Iraida Orr, Kansas Legislative Research Department
Craig Callahan, Kansas Legislative Research Department
Evelyn Walters, Committee Assistant

Conferees appearing before the Committee:

Doug Stark, owner of eight Comfort Care Homes Plus
Artis Perett, RN, owner Heartland Haven Home Plus
Susan Fout, Kansas Department on Aging
Glenna Svanta, Covenant Care Senior Living Home Plus
Mitzi McFatrach, KS Advocates for Better Care
Cindy Luxem, Kansas Health Care Association
Karen James, Mothers & Others Home Plus
Joe Ewert, Kansas Association of Homes and Services for the Aging

Others attending:

See attached list.

Chairman Bethell opened the Roundtable on regulations for Homes Plus:

Chairman Bethell commented that the reason for today's informal roundtable is to discuss any regulations the conferees felt may be in order if **HB 2417** passes.

Above conferees made remarks and asked questions regarding current regulations. Representative Worley, Representative Wolf-Moore, Representative Kelly, Representative Gonzales, and Representative Hill asked questions.

Regulations regarding staffing, survey frequency, training and owner license were main areas of discussion.

Mitzi McFatrach presented a list of Home Plus facilities and a report from the National Center for Assisted Living/American Health Care Association 2010 Report which shows the number of beds other states allow for Home Plus. (Attachment 1).

Staff presented written information from the Kansas Department on Aging website regarding regulations and construction variances compared to Assisted Living/Residential Health Care, and a historical facility count. (Attachment 2). KDOA fact sheet and Kansas Home Plus Locations Map also was provided by staff (Attachment 3).

Chairman Bethell closed the roundtable on regulation discussion at 9:57 am.

Representative Gonzales moved to approve the minutes of February 15, 17, and 22. Seconded by Representative Kelly. Motion carries.

Meeting on call of the chair for March 17, 2011.

The meeting was adjourned at 9:58 am.

HOUSE AGING AND LONG TERM CARE COMMITTEE

DATE: 3/15/2011

[illegible]

PLEASE USE BLACK INK

93 Total
13 Alzcare

Home Plus Facilities in Kansas

Country Place Home Plus of Hoisington	Hoisington	Barton	Willow Park Adult Center	Overland Park	Johnson
Country Place Senior Living	Ellinwood	Barton	Southern Hospitality Home LLC	Olathe	Johnson
Franklin House	Fort Scott	Bourbon	Galway Homes #2	Leawood	Johnson
Abundant Life Care Center	Hiawatha	Brown	Comfort Care Homes of KC #9833	Leawood	Johnson
The Pines of Hiawatha	Hiawatha	Brown	Comfort Care Homes of KC #10001	Overland Park	Johnson
Country Angels	Baxter Springs	Cherokee	Seniorcare Homes 68th	Overland Park	Johnson
Family Care Home	Abilene	Dickinson	Shank Home LLC	Lakin	Kearny
Coopers Home Care #1	Lawrence	Douglas	Harmony Adult Home Plus	McPherson	McPherson
Coopers Home Care #2	Lawrence	Douglas	Heartland Haven	Inman	McPherson
VNA Care Cottage	Lawrence	Douglas	Loving Care of McPherson	McPherson	McPherson
Bridge Haven Memory Care Residence, LLC	Lawrence	Douglas	Sweet Country Homes, Inc.	Carbondale	Osage
Coopers Home Care #3	Lawrence	Douglas	Progressive Care Home Plus LLC	Alton	Osborne
Christian Care Cottage #2	Ottawa	Franklin	Country Place Home Plus of Larned	Larned	Pawnee
Heart to Heart Home Plus	Pomona	Franklin	Haven House	Haven	Reno
The Pines of Holton	Holton	Jackson	Hutchinson Home Plus	Hutchinson	Reno
Glenn Moore Meadows	Holton	Jackson	Country Place Home Plus of Scandia	Scandia	Republic
Deer Park Senior Group Home - North	Meriden	Jefferson	Bethel House	Wichita	Sedgwick
Linnwood Place Home Plus	Valley Falls	Jefferson	Reflections Residential Care	Wichita	Sedgwick
Deer Park Senior Group Home South	Meriden	Jefferson	Comfort Care Homes, Inc. #1434	Wichita	Sedgwick
Seniorcare Homes Sagamore	Leawood	Johnson	Comfort Care Homes, Inc. #641	Wichita	Sedgwick
Seniorcare Homes Foster	Overland Park	Johnson	Comfort Care Home, Inc. #147	Wichita	Sedgwick
Golden Years Adult Care Home	Olathe	Johnson	Comfort Care Homes, Inc. #509	Wichita	Sedgwick
Galway Homes	Leawood	Johnson	Comfort Care Homes #6504	Wichita	Sedgwick
Comfort Care Homes of KC #7010	Overland Park	Johnson	Sunflower Meadows #1	Wichita	Sedgwick

Home Plus Facilities in Kansas

Sunflower Meadows #2	Wichita	Sedgwick	Reflection Living of Hidden Lakes LLC	Wichita	Sedgwick
Comfort Care Homes Inc. #441	Wichita	Sedgwick	Reflection Living, LLC	Wichita	Sedgwick
Meadowlark Adult Care Home 5	Wichita	Sedgwick	Meadowlark Adult Care Home 4	Wichita	Sedgwick
Meadowlark Adult Care Home 1	Wichita	Sedgwick	Meadowlark Adult Care Home 6	Wichita	Sedgwick
Mothers & Others, LLC	Wichita	Sedgwick	Arbor Home-Siefkin	Wichita	Sedgwick
Harbor Home B	Clearwater	Sedgwick	Meadowlark Adult Care Home 3	Wichita	Sedgwick
Harbor Home A	Clearwater	Sedgwick	Comfort Care Homes #6505	Wichita	Sedgwick
Wellington Home Plus Living	Wichita	Sedgwick	New Beginnings Home Care	Wichita	Sedgwick
Bethel House 2	Wichita	Sedgwick	Caring Hearts for Senior Living	Wichita	Sedgwick
Gracious Senior Living LLC II	Wichita	Sedgwick	Arbor Home-Farmstead	Wichita	Sedgwick
Gracious Senior Living LLC I	Wichita	Sedgwick	Arbor Homes-Marjorie	Wichita	Sedgwick
Healing Hands Comfort Homes, LLC	Wichita	Sedgwick	Winter Meadows Homes I	Topeka	Shawnee
Keepsake Adult Care, Inc.	Wichita	Sedgwick	Autumn Home Plus	Topeka	Shawnee
Compassionate Care West	Wichita	Sedgwick	Tammy the Pro LLC	Topeka	Shawnee
Arbor Homes Coe Court	Wichita	Sedgwick	Topeka Adult Care Home	Topeka	Shawnee
Reflection Living of Timber Lakes	Wichita	Sedgwick	The Bogart House	Topeka	Shawnee
Covenant Care Senior Living	Wichita	Sedgwick	Friendly Acres II	Wellington	Sumner
Majestic Home Plus Living	Wichita	Sedgwick	Joy Home	Oxford	Sumner
Meadowlark Adult Care Home 2	Wichita	Sedgwick	Sug's Home Care	Conway Springs	Sumner
Gracious Senior Living LLC IV	Wichita	Sedgwick	Glenwood House	Wellington	Sumner
Gracious Senior Living LLC III	Wichita	Sedgwick	Phoenix House	Caldwell	Sumner
Arbor Home - Rockwood	Wichita	Sedgwick	Johnsonville Home LLC	Kansas City	Wyandotte
Reflections at Park West Plaza	Wichita	Sedgwick			

#1-14 from National Center for Assisted Living/American Health Care Assn. 2010 Report

- 1) Arizona – 3 levels of care/broad range of care/staff development required
- 2) Arkansas – 2 levels of ALF
- 3) Delaware – requires NH Administrator for any 25+ beds
- 4) Florida – 3 levels of high care ability
- 5) Georgia – specialized regs for Memory Care Unit
- 6) Indiana – Admin. must have BS/BA or equivalent +40 training of CEUs each year
- 7) **Maine** – 3 levels of care 6 or fewer residents, 1 level of care 7+ residents
- 8) Maryland – resident with higher level of care needs requires a waiver from the state & show how it won't affect care for other residents
- 9) **Minnesota** – Housing with Services – 2 support services /or 1 health related service separate from ALF
- 10) North Carolina – 2-6 Family Homes or 7+ Adult Care Homes
- 11) **Texas** – 4 bed Adult Foster Care ALF type
- 12) **Oregon** – 5 persons
- 13) Washington – 7 persons
- 14) **Wisconsin** – 3 to 4 persons Adult Family Homes. Alzheimer's training required if care for dementia clients
- 15) **Oregon & Washington Adult Family Care Homes** serves higher level of impairment than ALFs do. They have a robust staff training program the state pays for. (per AARP 2009 report on Adult Foster Care Homes)

HP regulation compared to ALF/RHCF regulation

ALF/RHCF	HP	Difference in HP
26-41-101 Administration	26-42-101 Administration	Identical
26-41-102 Staff Qualification	26-42-102 Staff Qualification	(b)"in attendance and responsive" instead of "awake and responsive"
26-41-103 Staff Development	---	No separate staff development requirement
26-41-104 Disaster/Emergency Preparedness	26-42-104 Disaster/Emergency Preparedness	Identical
26-41-105 Resident Records	26-42-105 Resident Records	Identical
26-42-106 Community Governance	----	No regulation for resident council
26-41-200 Resident Criteria	26-42-200 Resident Criteria	Identical
26-41-201 FCS	26-42-201 FCS	Identical
26-41-202 NSA	26-42-202 NSA	Identical
26-41-203 General Services	26-42-203 General Services	No 'Special Care' subsection
26-41-204 Health Care Services	26-42-204 Health Care Services	Identical
26-41-205 Medication Management	26-42-205 Medication Management	(I) Medication regimen review can also be conducted by Licensed nurse
26-41-206 Dietary	26-42-206 Dietary	No provision for dietary supervisor as required for facilities with 11 or more residents; no provision for food preparation or storage in resident's apartment; HP regulation for 3 day supply of food
26-41-207 Infection Control	26-42-207 Infection Control	Identical

HOUSE AGING & LTC

DATE: 3/15/11

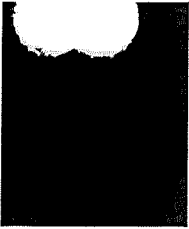
ATTACHMENT # 2

Construction variances

ALF KAR 28-39-254, 28-39-255, 28-39-256	RHCF KAR 28-39-254, 28-39-255, 28-39-256	HP KAR 28-29-437
Apartment with sleeping area with window, storage area with doors; living area	Sleeping area with window	Bedroom with at least 1 window; visual privacy; storage of personal items; Bedroom for resident who requires physical assistance with transfer from bed to wheelchair located on 1 st floor of facility
Kitchen with sink, refrigerator, stove or microwave		
Toilet room with toilet, lavatory, tub or shower	Toilet room with toilet, lavatory and bathing unit accessible to residents with disabilities	At least 1 bathroom with toilet, lavatory, and shower or tub for each 5 individuals
Entrance with locking device	Entrance with locking device	
At least 200 square feet not including bathroom or closets	At least 100 square feet not including bathroom or closets; if shared living unit, at least 80 square feet of living space per resident	Space of at least three feet between bed in multi-bed room
Space with desk and phone to be used by direct care staff to chart and maintain resident records	Space with desk and phone to be used by direct care staff to chart and maintain resident records	
Locked medication are with sink and refrigerator in same area	Locked medication are with sink and refrigerator in same area	
Janitor closet for storing supplies and equipment with a floor or service sink	Janitor closet for storing supplies and equipment with a floor or service sink	
Laundry with work counter, locked cabinet for storage of chemicals and supplies, handwashing lavatory with non-reusable method of hand drying within or accessible to laundry facility	Laundry with work counter, locked cabinet for storage of chemicals and supplies, handwashing lavatory with non-reusable method of hand drying within or accessible to laundry facility	Laundry shall not be located in same room where preparation of service of food occurs

HISTORICAL FACILITY COUNT															
Facility Type	Dec 1997	Dec 1998	Dec 1999	Dec 2000	Dec 2001	Dec 2002	Dec 2003	Dec 2004	Dec 2005	Dec 2006	Dec 2007	Dec 2008	Dec 2009	Dec 2010	Feb 2011
Adult Day Care	6	11	9	13	12	11	9	8	8	9	12	10	10	9	9
Assisted Living	54	65	75	80	89	95	96	99	108	112	118	128	130	130	131
Boarding Care Home	45	43	44	43	44	38	33	31	30	27	26	17	14	12	12
Home Plus	32	39	42	50	38	43	49	51	52	58	67	80	88	91	89
Residential Health Care Facility	19	33	39	43	51	53	53	49	47	49	49	46	47	47	48
TOTAL	156	191	209	229	234	240	240	238	245	255	272	281	289	289	289

Facility Type	1997	2011	Increase (Decrease)
Adult Day Care	6	9	50%
Assisted Living	54	131	143%
Boarding Care Home	45	12	(73%)
Home Plus	32	89	178%
Residential Health Care Facility	19	48	153%
Total	156	289	85%



Kansas Department on Aging Fact Sheet

The Basics of Housing Options

With a variety of housing options available, it is difficult to decide the most appropriate for your situation. Below is a brief summary of the different types that may be available, depending on where you live.

Independent Homes, Duplexes, Condos – individually owned or rented of different sizes and styles. Due to declining health or other circumstances, it may now be necessary to move to a different type of housing more suited to current needs. Maintenance of the home may have become too much for the individual.

Senior Apartment Living . . . is usually an apartment complex that provides each tenant a full apartment, kitchen appliances, laundry facilities, and 24-hour security. Services such as scheduled activities, transportation, and meal service may or may not be included. This type of housing is also referred to as Congregate Housing. Continuing Care Retirement Communities usually include this level of housing in their option pack.

Continuing Care Retirement Community (CCRC) . . . is a campus that offers a range of housing opportunities that may include independent living houses or apartments, assisted living, residential health care, adult day care, home plus, and nursing facility. Services may also vary from no assistance to assistance by a licensed nurse. Residents select the type of housing and level of care that fits their needs and then move to another type and level of care if their situation calls for it.

Adult Care Home . . . means any nursing facility, nursing facility for mental health, intermediate care facility for the mentally retarded, assisted living facility, residential health care facility, home plus, boarding care home and adult day care facility, all of which classifications of adult care homes are required to be licensed by the Secretary of Aging.

Nursing Facility . . . means any place or facility operating 24 hours a day, seven days a week, caring for six or more individuals not related within the third degree of relationship to the administrator or owner by blood or marriage and who, due to functional impairments, need skilled nursing care to compensate for activities of daily living limitations

Assisted Living Facilities . . . are licensed and are usually located in apartment-type buildings or complexes that are free standing or attached to a nursing facility. Each apartment in the facility has a kitchen, a bathroom with a shower or tub, and a separate or combined sleeping, living and storage area. The facility also has common areas such as a living room, activity area and dining room. Support services are provided to promote the people's privacy, freedom and independence. Some people may not need any assistance while other people may need assistance with transportation, light housekeeping, meal preparation, medications, bathing, dressing, and health care. Supervised nursing care provided by certified nurse aides is available twenty-four hours a day, seven days a week. Skilled nursing care by a licensed nurse may be provided on an intermittent or limited term basis, or on a regular basis if limited

HOUSE AGING & LTC

DATE: 3/15/11

ATTACHMENT #3

in scope. The facility may employ health care professionals such as nurses, social workers, therapists, dietitians and pharmacists or coordinate the services of these health care professionals with outside agencies. The people living in an assisted living facility cannot employ privately non-certified or licensed individuals to assist them with services and care.

Residential Health Care Facilities . . . are licensed apartment type buildings or complexes that are freestanding, or are attached to a nursing facility. An individual living unit can be similar to that of an assisted living apartment with exception of not having a microwave or stove for cooking. Alternatively, the individual living unit can be only a room with a combined sleeping, living and storage area. The toilet room may or may not have a shower or tub and may be private or shared with another living unit. The facility has common areas such as a living room, bathing rooms and dining room. If the facility is attached to a nursing facility, it may share some common areas with the nursing home. Staffing, assistance and services are the same as in an assisted living facility (see previous page).

Home Plus Facilities . . . are licensed private home residences or facilities for eight people or less. A person may share a bedroom or have their own bedroom. All the people share the common spaces of the home. Meals are provided. Supervised nursing care provided by certified nurse aides is available twenty-four hours a day, seven days a week. Skilled nursing care by a licensed nurse may be provided on an intermittent or limited basis, or on a regular basis if limited in scope. Assistance and services are the same as in an ALF (see ALF information on previous page).

Boarding Care Homes . . . are licensed private home residences or facilities for up to ten people. A person may share a bedroom or have his/her own bedroom. All the people share the common spaces of the home. Non-certified or non-licensed staff provide supervision twenty-four hours a day, seven days a week. The only assistance and services the people may receive are meals, laundry, housekeeping and supervision for self-administration of medication. This type of facility DOES NOT provide personal, medical or skilled nursing care. The resident must be able to walk and manage his or her own affairs.

What are the costs and how can I get more information?

The cost of these different housing options will vary depending on the size of your apartment, amount of services you want or need, the facility's location, and management. Some housing may be able to lower the rent cost based on an individual's income.

Services such as homemaking and attendant care can be funded in many licensed adult care homes by the Home and Community Based Services for the Frail Elderly (HCBS-FE) Medicaid program. The home, the potential resident and the case manager would negotiate the room and board cost and the service plan. The resident would pay the negotiated room and board cost and Medicaid would pay the service cost.

Some facilities will have waiting lists, so it is wise to plan ahead if you are considering moving into one of these housing alternatives. Contact the Area Agency on Aging, Kansas Department of Social and Rehabilitation Services (SRS) office, or the local housing authority in your area for more information and assistance.

Important Questions to Ask Before You Sign a Contract

1. How much will it cost, including add-ons to the rent?
2. What is the cost and policy on telephones/TVs/Cable TV hook-up?
3. Are pets allowed? If so, is there an extra deposit?
4. Are there any restrictions on visitors or overnight guests?
5. How are cleaning standards maintained? Does someone inspect apartments? Are the inspections announced or unannounced?
6. Will the home or facility accept Medicaid payment for service?
7. Can the rent be based on my income?
8. What is the policy on retaining my apartment if I have a change of health or would need to be hospitalized? Is that policy part of the contract?
9. What are the costs for services like transportation, laundry, meals, etc?
10. If you will need parking, is it included or is there an extra fee for parking?
11. What fees am I still responsible for if I am discharged per my own choice or by the facility?

Other Resources:

Many nursing homes, assisted living and independent apartment complexes have their own websites. Search by the facility name.

If the home is a licensed facility, check the last inspection report. It should be available to you within the facility. The 5-Star nursing home rating system is available at www.medicare.gov. This system is for nursing homes only, not assisted living or other types.

A list of licensed facilities is available at www.agingkansas.org/CultureChange/FacReports/disclaimer.htm.

The Kansas Department on Aging (KDOA) does not discriminate on the basis of race, color, national origin, sex, age or disability. If you believe you have been discriminated against by either KDOA or a KDOA funded program, please contact KDOA to receive additional information on filing a complaint: 1-800-432-3535 (voice); 1-800-766-3777(TTY).

Residential Board and Care

Kansas Building Fire Safety Handbook 3rd Edition, November 2006

This information is provided as a quick reference and is not intended to be used in place of state adopted codes.

- NFPA 101
1991 Edition
- Fire Fact 51

Key Concepts:

Small Facilities
4-16 Residents

Large Facilities
16 or More Residents

RBC Resident
For personal care
only. Not for chronic
or convalescent
medical care

No adopted codes for
facilities under 4

KSFM Contacts:

(785) 296-3401

www.ksfm.ks.gov

Jack Chatmon

Stephen Fenske

Mike Wikle

Mail to:

700 SW Jackson,
Suite 600

Topeka, KS 66603

The Code Requirements – At a Glance

New & Existing Small

- Must have primary & secondary means of escape
- No locks when occupied
- Manual fire alarm system*
- Smoke detectors: all levels, living rooms, dens (initiate alarm)*
- Smoke detectors: sleeping room (single-station)*

All Facilities

- Emergency lighting*
- Fire extinguishers mounted
- Written emergency procedures & Fire drills
- Interior finish*
- Enclosed interior stairs*
- Closets & Bathrooms always open from inside
- Basements must be separated (1 ¾ solid door, self-latching/closing)*

New & Existing Large

- 2 exits from every floor (including basements)
- 100 ft travel distance
- Delayed Egress locks (optional)
- Full fire alarm system w/annunciator panel*
- Smoke detectors: corridors & common spaces (initiate alarm)*
- Smoke detectors: sleeping rooms (single station)

Sprinkler System

- Existing: Required (Impractical Only)
- New: Required (All)
- NFPA 13, 13R or 13D

* Indicates a possible exception to the requirement in the Life Safety Code

New Facility or Existing Amendments

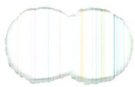
If you have a new facility or you have an existing facility that is applying for license amendments, the following must be submitted to KSFMO for review:

- Code footprint
- C.2.2
- C.2.2.A

* Please note that once an existing facility applies for a license amendment or undergoes major renovations, it is now considered a NEW facility under the Life Safety Code

The code footprint must be constructed to meet the 1991 edition of the Life Safety Code.

The 11x17 code footprint must come from a Kansas licensed architect or engineer with a stamp, date, and signature.



Dear Applicant:

The following is a list of the policies and procedures that must be submitted to the Kansas Department on Aging (KDOA) along with your application. You may have other policies and procedures for your facility, but only those listed below will be reviewed and approved by KDOA.

The overall goal for any policy or procedure document is for it to be simple, consistent and easy to understand and use.

Policy: A policy is a statement that reflects the 'rules' for practice. It defines how your facility will meet the requirements of the regulation. Keep these general principles in mind when writing policies:

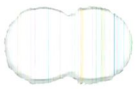
- Policies are written in clear, concise, simple language
- Policy statements address what is the rule rather than how to implement the rule

Procedure: A procedure is a series of steps taken to implement a policy.

- Procedures are tied to policies.
- Procedures list the steps to follow in order to comply with the policy
- Procedures should be written so that all users can easily follow what needs to be done.

For Home Plus Facilities provide policies and procedures for:

Topic	Regulation Reference
Abuse, Neglect and Exploitation (Use definitions from KSA 39-1401)	26-42-101 (f)
Admission, Transfer, Discharge (Policies only)	26-39-102 (a) and (f) 26-42-200
Adult Day Care (if applicable)	26-42-203 (b)
Advanced Medical Directives	26-39-102 (b)
Disaster and Emergency Preparedness	26-42-104 (b)
Infection Control	26-42-207 (b)
Resident Rights	26-42-101 (d)
Respite Care (if applicable)	26-42-203 (c)



Licensure Packet Contents:

The following items are included with this Licensure Packet.

- A. License application forms with instructions on how to complete.
- B. Applicable Statutes and Regulations for the classification of license you have requested.
- C. State Fire Marshal's information. You are required to submit a notification to the State Fire Marshal's office along with a code "footprint" of your building/facility/home. Call the State Fire Marshal's office at 785-296-3401 if you have any questions. A license cannot be issued until we receive approval from the state fire marshal's office.
- D. For the following facility types:
 - Assisted Living / Residential Health Care Facility
 - Home Plus
 - Adult Day Care

A checklist is enclosed for you to follow as you develop policies and procedures to bring your facility into compliance with the regulations and statutes. You need to **submit your policies and procedures** to our agency. Mail them to Patty Brown at New England Building - LCE Commission, 503 South Kansas Avenue, Topeka, Kansas, 66603.

Additional Items To Be Submitted For Licensure:

1. If the building or home is leased or rented, submit a copy of the lease agreement. If the building is owned submit a copy of the deed.
2. A financial statement projecting the first month operating income and expense, and a current balance sheet showing a minimum of one month's operating expense in cash and/or owners equity. All financial statements will be prepared according to generally accepted accounting principles and certified by the applicant to be accurate.
3. Submit resumes of all professional staff to be involved in operating or supervising the operation of the facility. This means anyone who will supervise operations of the facility and who will conduct the business affairs of the facility.
4. An applicant of a home-plus, boarding care home or adult day care facility shall submit a drawing of the proposed facility that includes identification and dimensions of rooms or areas.

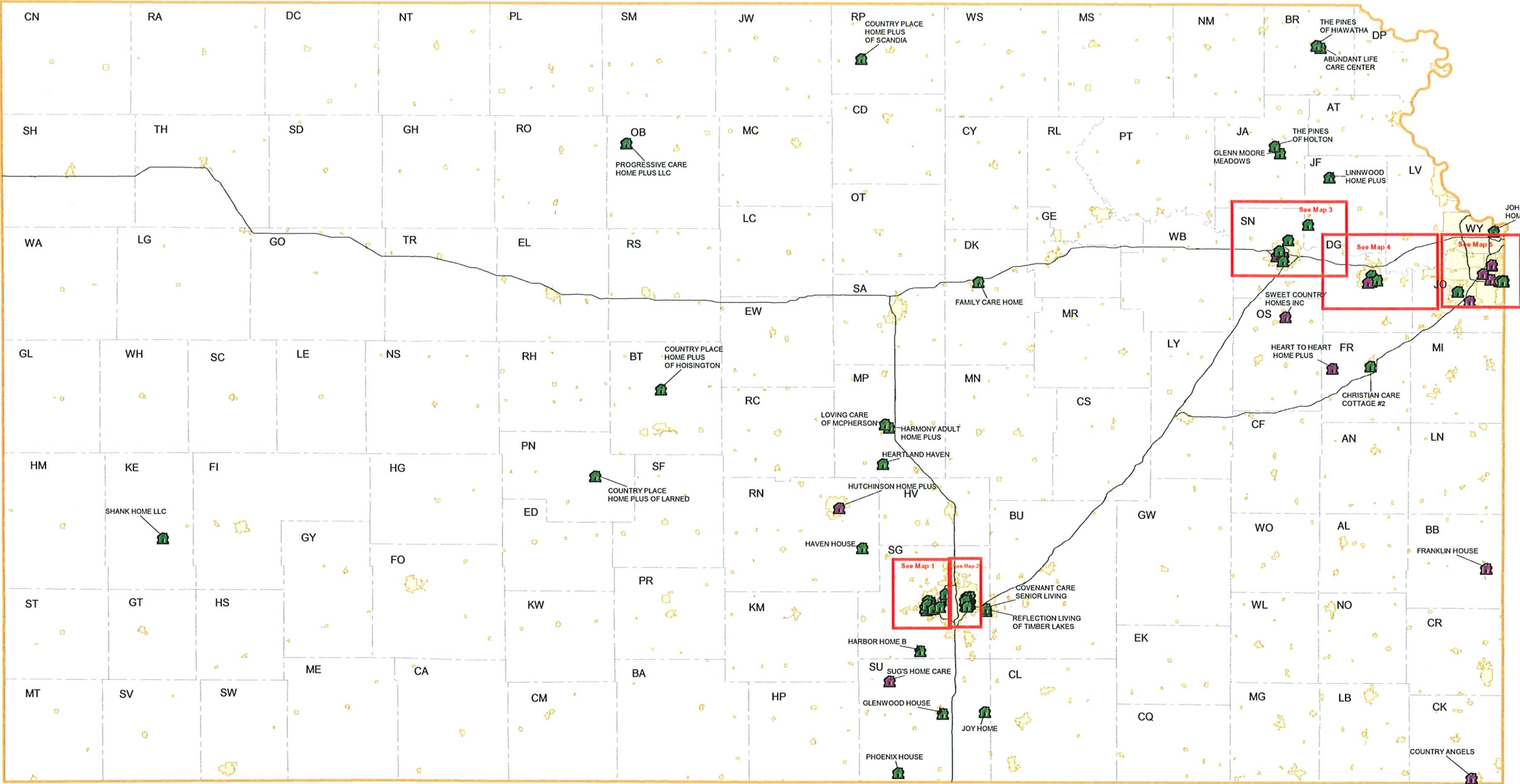
Please return the application forms and the requested items to our office along with the fee of \$100.00 plus \$30.00 per bed/resident.

You must submit a complete application to the KDOA before the agency can make a decision to approve or deny it as provided by K.S.A. 77-511. The agency will make every effort to rule upon a completed application within 90 days of its receipt.

If you have any questions, please contact Rita Bailey at 785-296-1259.

Kansas Home Plus Locations

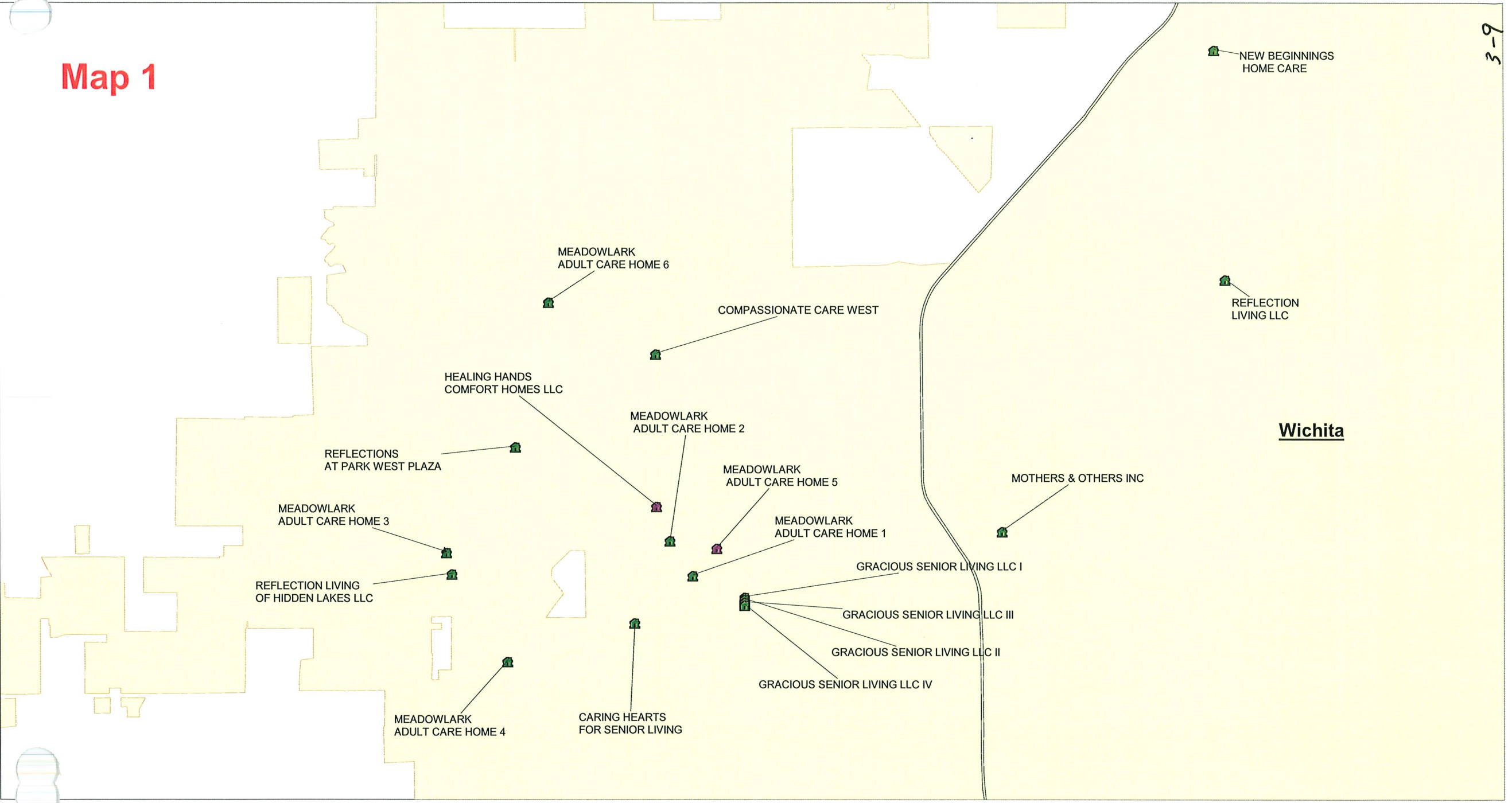
3-8



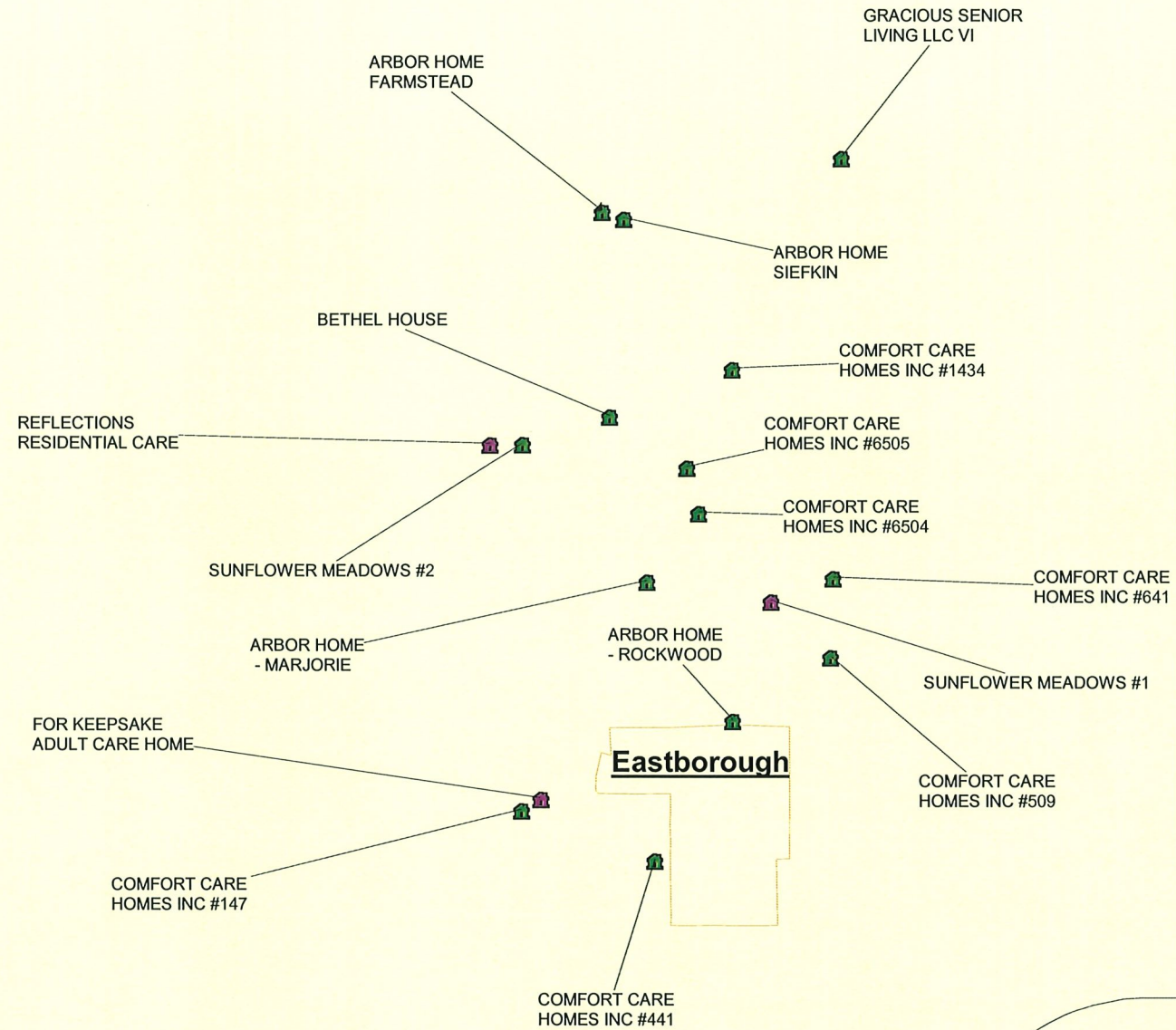
Legend

Home Plus Facility	Populated Place	County Boundary
Beds: 6 to 8 (67)		
Beds: 3 to 5 (19)		

Map 1



Wichita



Map 3

Holton
THE PINES OF HOLTON
GLENN MOORE MEADOWS

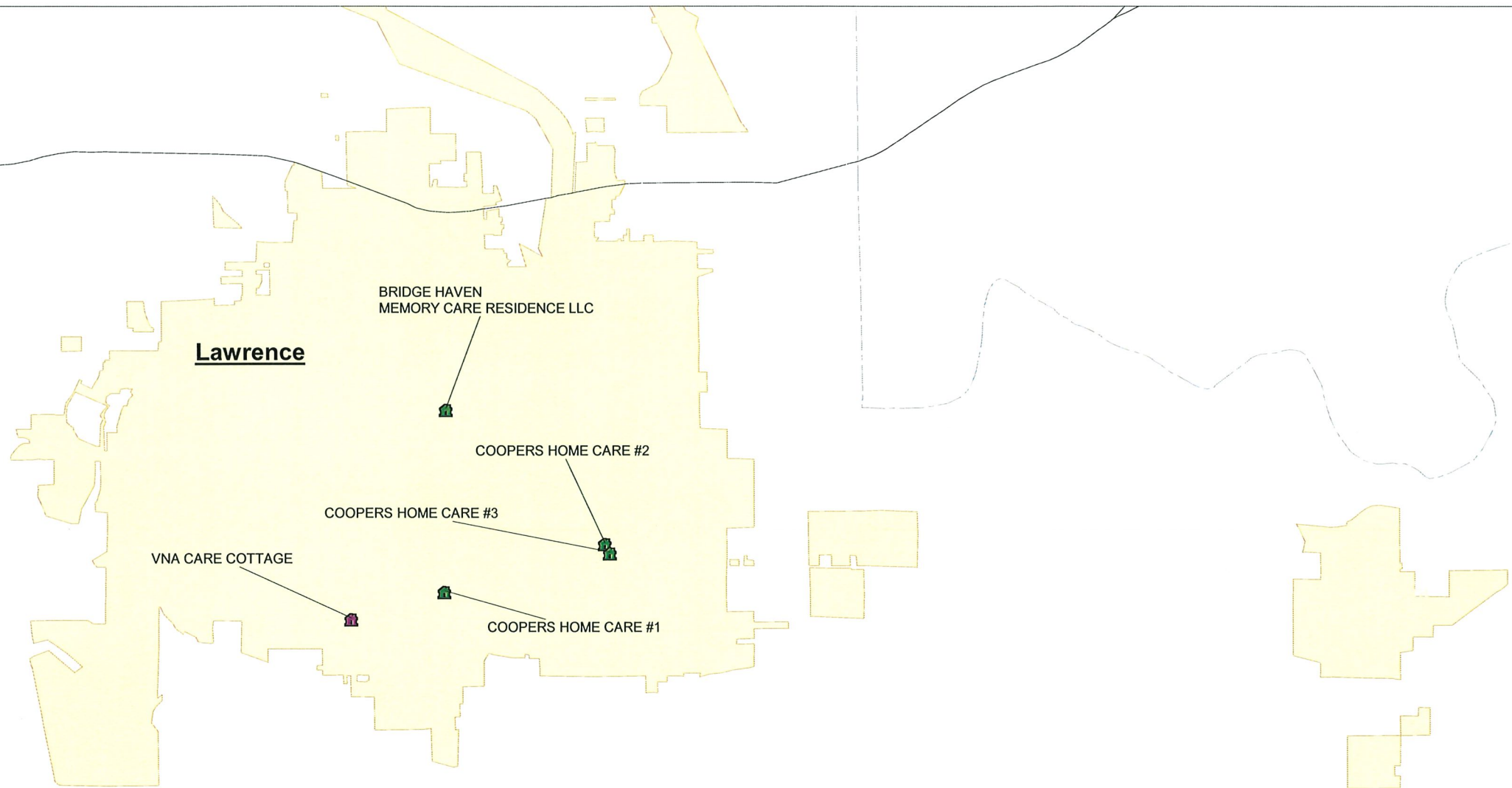
JF Valley Falls
LINNWOOD HOME PLUS

Meriden
DEER PARK SENIOR GROUP HOME NORTH

WB
SN
TOPEKA ADULT CARE CENTER
AUTUMN HOME PLUS, INC
Topeka
TAMMY THE PRO LLC
THE BOGART HOUSE

LV

Map 4





Map 5

SENIORCARE
HOMES 68TH



COMFORT CARE
HOMES OF KC #7010

WILLOW PARK ADULT CENTER



SENIORCARE HOMES
FOSTER



GALWAY HOMES

GALWAY HOMES #2



COMFORT CARE
HOMES OF KC #9833



SENIORCARE HOMES
SAGAMORE

Overland Park

Leawood