

MINUTES OF THE HOUSE APPROPRIATIONS COMMITTEE

The meeting was called to order by Chairman Marc Rhoades at 9:07 a.m. on January 26, 2011, in Room 346-S of the Capitol.

All members were present except:

Representative Ballard – excused  
Representative Gatewood – excused  
Representative Sullentrop - excused

Committee staff present:

Nobuko Folmsbee, Office of the Revisor of Statutes  
Alan Conroy, Kansas Legislative Research Department  
Jarod Waltner, Kansas Legislative Research Department  
Shirley Morrow, Kansas Legislative Research Department  
Cindy O'Neal, Administrative Assistant, Appropriations Committee  
Kathy Holscher, Committee Assistant, Appropriations Committee

Others attending:

See attached list.

- Attachment 1 Kansas Department of Social and Rehabilitation Services – Agency Overview
- Attachment 2 Circles of Hope Information and Application

Chairman Rhoades welcomed committee members, and reviewed the meeting agenda.

Representative Rhoades made a motion to introduce proposed legislation regarding the coronor's jurisdiction to transfer bodies to other counties for cremation. The motion was seconded by Representative Crum. Motion carried.

Robert Siedlecki, Acting Secretary, Kansas Department of Social and Rehabilitation Services (SRS), presented an overview of the department, (Attachment 1). He introduced Jeff Kahrs, Chief of Staff, Gary Haulmark, Government Relations Director, and Lois Weeks, Director of Financial Management, Kansas Department of Social and Rehabilitation Services. Acting Secretary Siedlecki reviewed agency programs and services, funding sources, and upcoming initiatives that included healthy marriage, adoption and outreach to faith-based community organizations.

Discussion followed by committee members. Acting Secretary Siedlecki reviewed the FY 2012 Governor's budget recommendations which included \$3 million reduction in State General Funds for the Early Head Start Program and placing those dollars into a Child Care fund. As this is developed, additional information will be provided, he noted. The matching federal dollars for FMAP ends on July 1, 2011, which will have an impact on Medicaid programs. He discussed the proposed closure of Kansas Neurological Institute and noted that this recommendation would not effect the quality of service or funding level. A savings of 50% per person would be achieved with this recommendation. The process and timeline for closing KNI was reviewed. He stated that the department will be collaborating with the mental health community to work on a resolution to address community needs. Efforts are also underway to address the needs of the blind and visually impaired throughout the state to provide rehabilitation services, it was noted.

Chairman Rhoades introduced the conferees from the Circles of Hope.

Myrna Krehbiel, Executive Director of Peace Connections and Coordinator for Circles of Hope, provided an overview of the organization, (Attachment 2). She emphasized the importance of teaching people how to fish rather than giving them fish which sustains individuals and communities, and the need for change for people with limited resources. Wanda Humptry discussed the Circle Leader's role in helping to lead people out of poverty and into self-sufficiency. She reviewed resources which included financial, social, spiritual and stisticmic issues. Jerica Hinshaw, Circle Leader, provided testimony on how the Circles of Hope enriched her life. Denise Rhoades discussed her participation with Getting Ahead classes, which is a fifteen week course designed to address poverty issues, barriers in the community and development of individual SMART goals. She added that Circles of Hope brings together social services, families in poverty, faith-based organizations, businesses and government to address poverty at a local and personal

CONTINUATION SHEET

Minutes of the House Appropriations Committee at 9:07 a.m. on January 26, 2011, in Room 346-S of the Capitol.

level. She noted the financial return on investments which included: reduced government assistance; tax revenues from individuals and greater financial stability for individuals and families. Candy Kutz, Circles Leader, discussed how Circles of Hope enriched her life.

Discussion by committee members followed. It was noted by Circles of Hope representatives that funding sources are primarily from grants, individuals, churches and organizations and referrals from Health Ministries, Parents as Teachers, SRS, local employers and school districts within the community. Rules of the class were reviewed.

Shawn Sullivan, Acting Secretary, Department of Agriculture, provided an overview of the department. There were no handouts available to committee members. He stated that the agency administers Medicaid reimbursement to contract service providers, nursing facilities and assisted living facilities. He emphasized the need for partnerships, collaboration and transparency in order to address increased caseloads, budget issues and an enhanced service delivery model.

Acting Secretary Sullivan responded to questions from committee members.

He discussed changes to nursing home facilities that are geared to a more homelike atmosphere rather than an institutional model.

Chairman Rhoades stated that committee minutes for January 12, 13 and 18 have been distributed.

Representative Crum made a motion to approve the minutes from January 12, 13, 18 committee meetings. The motion was seconded by Representative Kelley. Motion carried.

Chairman reviewed the agenda for Friday's committee meeting.

The meeting was adjourned at 10:20 a.m.



Marc Rhoades, Chairman

# APPROPRIATIONS COMMITTEE GUEST LIST

DATE: 1-26-11

NAME	REPRESENTING
Juni Rose	KCSL
Mitzj McFarrich	KABC
Leah Noakes	KABC
Lore Weeks	SRS
KBS MEATY	KEARNLEY + ASSOC
Martha Gabehart	KCPK
Mike Reelst	Ducks Broder
Sarah Hansen	ICADP
Tony Hunt	KADAP
Sara Anif	KDOA
leigh Keck	Capitol Strategies
Joe Ewert	KALGA
Gary ADKINS	SSAK
Jennifer Crow	Alliance
Matthew	KVE
Kevin	DD Council



DEPARTMENT OF SOCIAL  
AND REHABILITATION SERVICES

**Agency Overview**  
Rob Siedlecki, Secretary

Appropriations Committee  
Date January 26, 2011  
Attachment 1



DEPARTMENT OF SOCIAL  
AND REHABILITATION SERVICES

**M**ission  
To protect children and  
promote adult  
self-sufficiency

**V**ision  
Partnering to connect Kansans  
with supports and services to  
improve lives

## **Rob Siedlecki Jr., Secretary of Social and Rehabilitation Services (SRS)**

Rob Siedlecki has more than 15 years of public and private sector leadership experience at the local, state and federal levels. He worked for four years in the federal government's Administration for Children and Families which oversees more than 60 programs, including Head Start, the Healthy Marriage Initiative, runaway and homeless youth programs, and the Temporary Assistance for Needy Families (TANF) program. He served as chief of staff for the Florida Department of Health which has 17,000 employees and an annual budget of nearly three-billion dollars.

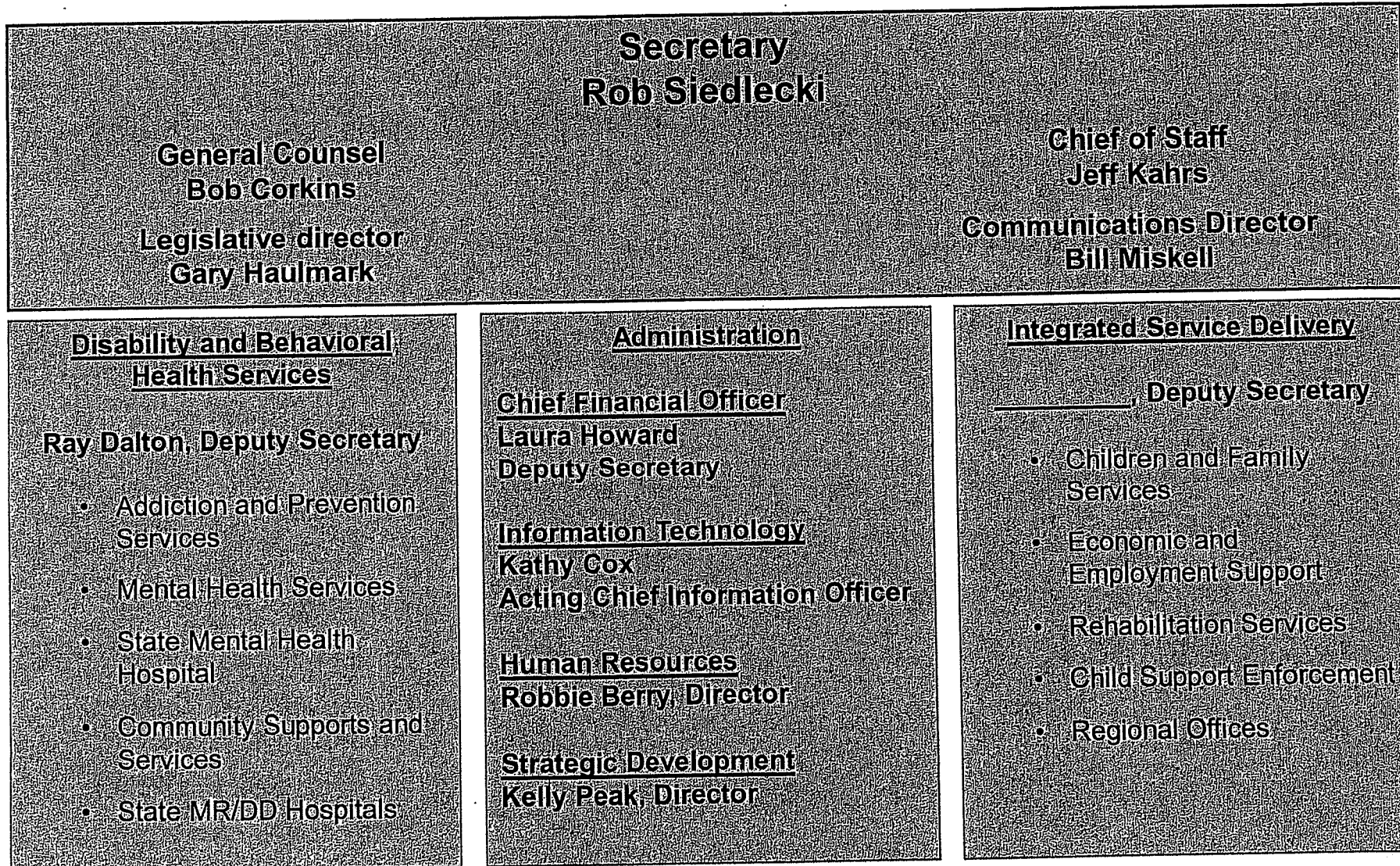
Appropriations Committee

Date January 26, 2011

Attachment 153



# Organization



Appropriations Committee

Date January 26, 2011  
Attachment 1-4

# SRS Leadership Team – Contact Information

**Rob Siedlecki**  
**Secretary**  
296-3271

**Jeff Kahrs**  
**Chief of Staff**  
296-3271

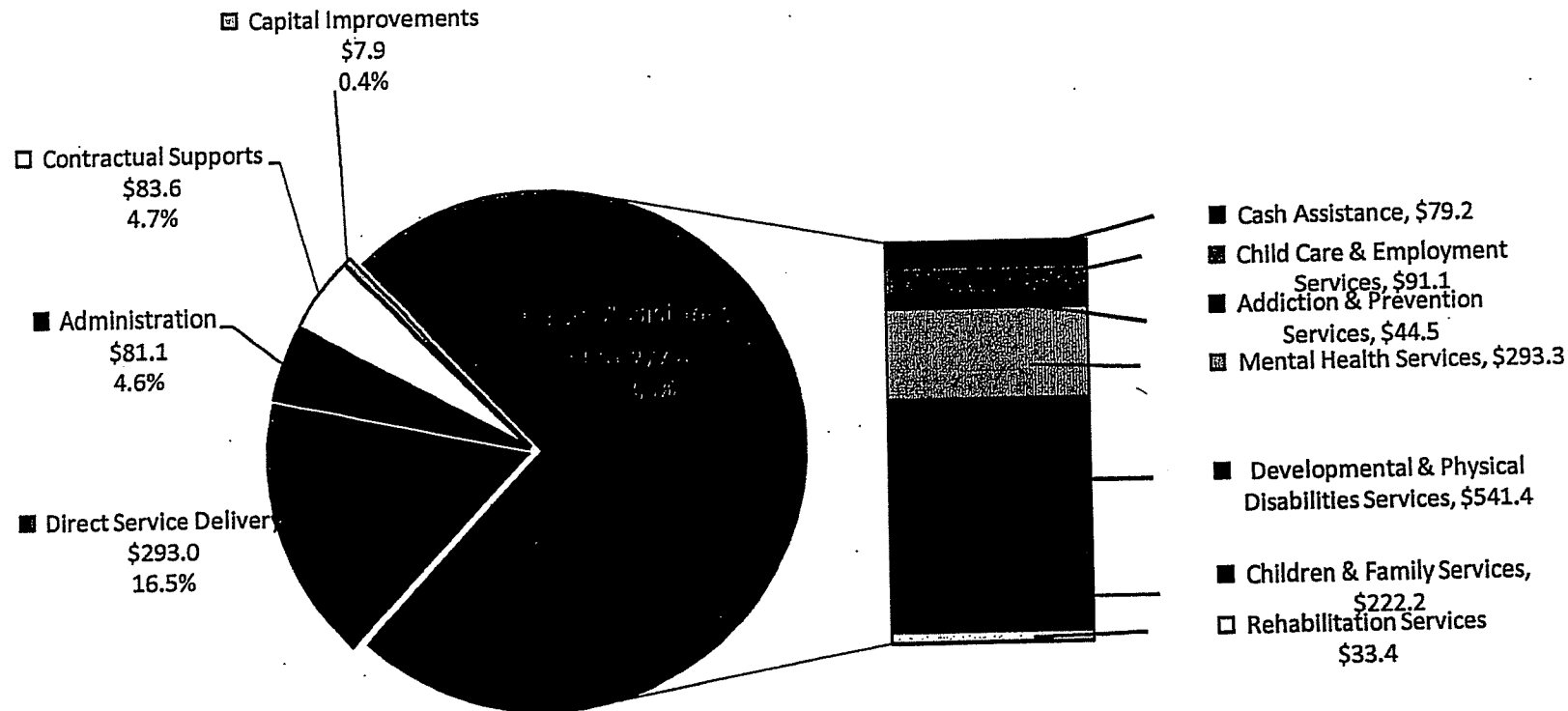
**Bob Corkins**  
**General Counsel**  
296-3967

**Bill Miskell**  
**Communications Director**  
296-3271

**Gary Haulmark**  
**Legislative Director**  
296-3271



# **FY 2012 SRS Governor's Budget Recommendations including State Hospitals Expenditures (in millions)**



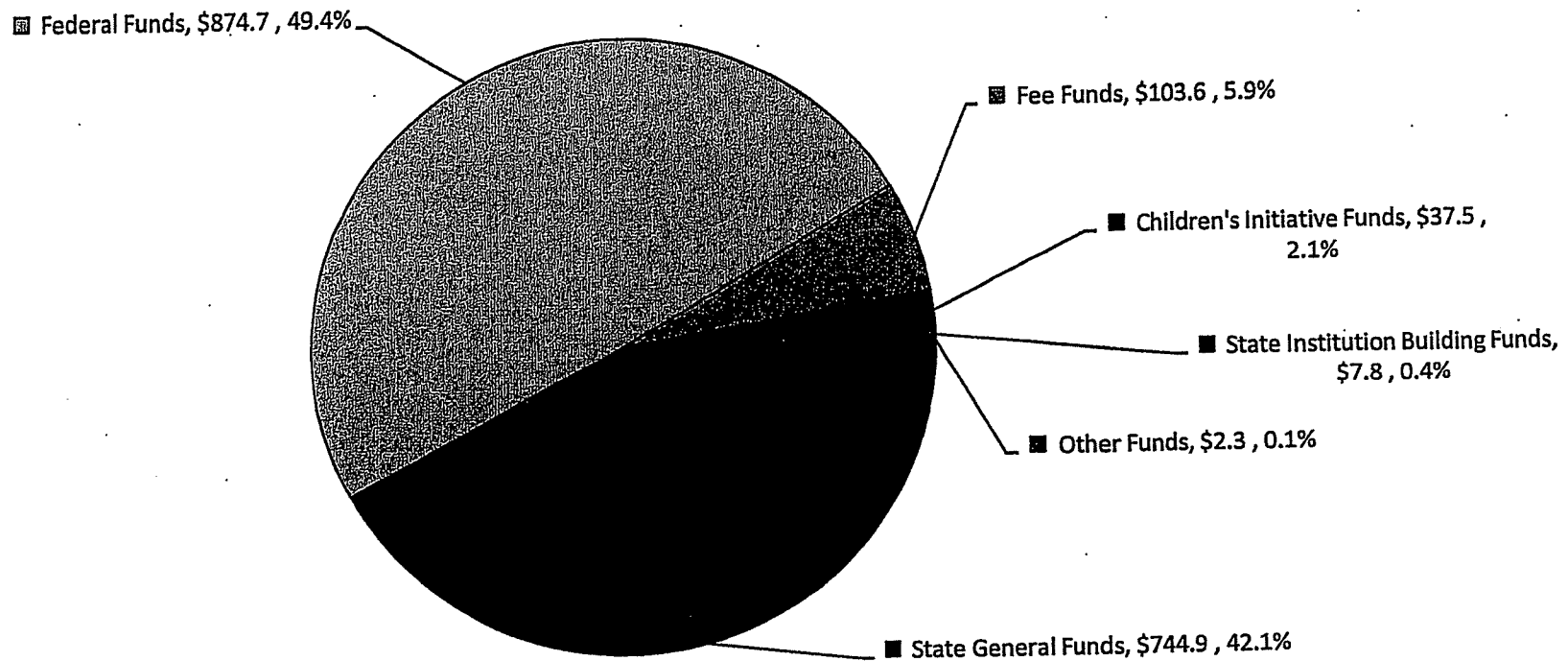
**Total Budget \$1,770.8  
million**

Appropriations Committee

Date January 26, 2011

Attachment 1-6

## FY 2012 SRS Governor's Budget Recommendations including State Hospitals Funding (in millions)



**Total Budget \$1,770.8 million**

## Expenditures and Persons Served By Program

	SFY 2011 GBR		SFY 2012 GBR	
SRS Program	Total Program Expenditures	People Served	Total Program Expenditures	People Served
Addiction and Prevention Services	46,126,718	284,270	48,052,591	295,259
Mental Health	332,141,594	105,836	326,657,585	88,554
Community Supports and Services	555,445,668	44,674	554,086,726	42,439
Children and Family Services	196,053,123	76,237	203,852,310	76,656
Economic and Employment Support	222,285,712	531,707	187,380,976	578,436
Rehabilitation Services	47,536,160	69,186	47,286,360	70,610
Child Support Enforcement	28,055,085	125,848	29,404,640	125,260
State Hospitals				
Mental Health	95,098,739	715	96,565,928	716
Developmentally Disabled	54,505,193	345	54,606,965	330
Note: People served could be duplicated between programs.				

# Addiction and Prevention Services

*Partnering to Promote Prevention and Recovery in Kansas Communities*

Appropriations Committee  
Date January 26, 2011  
Attachment 1-9

- Substance Use Disorders
  - Prevention
    - Reduce underage drinking
    - Reduce underage access to tobacco (Synar amendment)
    - 13 Regional prevention Centers work
  - Treatment
    - Managed Care
    - Block grant and Medicaid funds
    - 4<sup>th</sup> time DUI program (KDOC MOU)
  - Problem and Pathological Gambling
    - Problem Gambling and Addiction Fund
      - Problem Gambling Treatment
      - "Other Addiction" Services gaps

# Mental Health Services

*Treatment and support for Kansans with mental illness that ensure they experience recovery and live successful lives in the community*

Appropriations Committee

Date January 26, 2011

Attachment 1-10

- **Community Mental Health Center Grants**
  - Support CMHC infrastructure (e.g., 24 hour crisis response)
  - Serve people without the means to pay for treatment
- **Medicaid Mental Health Managed Care**
  - Serve All Kansans on Medicaid
  - HCBS Waiver for Children with a serious emotional disturbance
- **In-patient and Residential Treatment**
  - Psychiatric Residential Treatment Facilities: Residential treatment for children with a serious emotional disturbance
  - Community Hospitals: An alternative to state mental health hospitals for all children and some adults
- **Nursing Facilities for Mental Health**
  - Residential treatment for adults with severe and persistent mental illness
- **Consumer run and consumer support groups**
  - Consumer Run Organizations and Consumer Advisory Council
  - NAMI and Keys for Networking

# State Mental Health Hospitals

*Inpatient psychiatric treatment for Kansans experiencing severe mental health symptoms determined a danger to themselves or others, and forensic mental health services*

- **Osawatomie State Hospital**
  - Provides acute inpatient treatment for adults with mental illness.
  - SPTP Transition Program
- **Rainbow Mental Health Facility**
  - Provides primarily short-term, acute inpatient treatment for adults with mental illness
- **Larned State Hospital**
  - Psychiatric Services Program - provides inpatient treatment to children, adolescents and adults
  - State Security Program - provides evaluation, competency restoration and inpatient treatment for forensic patients
  - Sex Predator Treatment Program

Appropriations Committee

Date January 26, 2011

Attachment 1-11



# Community Supports and Services

*Provide resources and support to help Kansans with disabilities  
live self-directed lives in their community*

- Transition from facilities to the community
  - Money Follows the Person grant
- Medicaid waivers for home and community based services
  - Physical Disability Waiver
    - › Serves individuals age 16-65 who would otherwise require institutionalization in a nursing facility
  - Mental Retardation/Developmental Disability Waiver
    - › Provides community based services for individuals age 5 and up who otherwise would be eligible for placement in an intermediate care facility
  - Traumatic Brain Injury Waiver
    - › Serves individuals age 16-64 who have a traumatically acquired, non-degenerative, structural brain injury
  - Technology Assisted Waiver
    - › This program assists children, age 0-21 years who are chronically ill and medically fragile and dependent upon a life-sustaining medical device to compensate for loss of a vital body function
  - Autism Waiver
    - › An early, intensive intervention service targeting children up to age 5 who would otherwise be served in a state mental health hospital

Appropriations Committee

Date January 26, 2011  
Attachment 1-12

# Waiver Waiting Lists

as of January 1, 2011

	People on Waiting List	Cost to Eliminate list *	
		All Funds	SGF
Physical Disability (PD) Waiver	2,771	\$ 56,894,172	\$ 24,214,160
Developmental Disability (DD) Waiver **	3,391	\$ 114,364,653	\$ 48,673,596
Autism Waiver	264	\$ 4,976,928	\$ 2,118,181
Traumatic Brain Injury (TBI) Waiver		No wait list	
Serious Emotional Disturbance (SED) Waiver		No wait list	
<b>Total</b>	<b>6,426</b>	<b>\$ 176,235,753</b>	<b>\$ 75,005,937</b>
* The cost to eliminate the waiting list is based on the assumption the list is eliminated all at once on the first day of the fiscal year.			
** The total includes both individuals who are unserved (2,388) and underserved who are waiting for additional services (1,008).			

Appropriations Committee

Date January 26, 2011

Attachment 1-13

# Private/Public Intermediate Care Facilities

*Residences for Kansans with disabilities who require intensive supports*

Appropriations Committee

Date January 26, 2011  
Attachment 1-14

- **State Mental Retardation/Developmental Disability Hospitals**
  - **Kansas Neurological Institute**
    - › 98% of residents are severely to profoundly mentally retarded and require intensive medical supports
  - **Parsons State Hospital and Training Center**
    - › 86% of residents present with behavioral challenges or symptoms of emotional disturbance and require more intensive supports
- **Private Intermediate Care Facilities (ICFs/MR)**
  - Funded by Medicaid, these facilities serve individuals who need continuous, intensive services.
  - They work closely with community developmental disability organizations to arrange supports and services when the individual is ready to live more independently

# Children and Family Services

*Protect children from abuse and neglect, provide in-home services to preserve families, and seek safe, permanent homes for children*

- **Prevention Efforts**
  - Grants for community services to avoid abuse and neglect and promote good parenting
- **Child Protective Services**
  - Investigate reports of alleged abuse and neglect
- **Family Preservation Services**
  - Intensive in-home services that seek to keep families together
- **Permanency**
  - Foster care, reintegration and adoption services. After court-ordered removal, 95% of children are placed in a family-like setting. Assistance may be offered for adoption or permanent custodianship.

Appropriations Committee  
Date January 26, 2011  
Attachment 1-15

# Economic and Employment Support

*Promote self-sufficiency by assisting individuals and families  
to prepare for and maintain gainful employment*

- Support Employment
  - Temporary Assistance for Families
    - › Provides training and work experience for participants and up to 60 months of cash assistance.
  - Child Care Assistance
    - › Provides support to working families who need childcare
- Provide Economic Assistance
  - General Assistance/MediKan
    - › Provides cash and medical assistance to disabled Kansans waiting for federal disability determination
  - Food Stamps
    - › Helps low-income persons buy food with an electronic benefit card
  - Low Income Energy Assistance Program
    - › Provides assistance to keep homes heated and helps weatherize dwellings
  - Food Distribution Programs
    - › Provide foodstuffs to charitable institutions, soup kitchens and, in emergencies, directly to consumers
- Protect Vulnerable Adults
  - Adult Protective Services
    - › Investigate reports of alleged abuse, neglect, and exploitation

Appropriations Committee

Date January 26, 2011  
Attachment 1-16

# Rehabilitation Services

*Support Kansans with disabilities in gaining and keeping employment,  
and determine medical eligibility for federal disability programs*

- Vocational Counseling and Guidance
- Education and Training
- Job Placement and Supported Employment
  - Contract for services that support people seeking employment
- Disability Determination Services
  - Determine medical eligibility for Social Security Disability Insurance and Supplementary Security Income

Appropriations Committee

Date January 26, 2011  
Attachment 1-17



# Child Support Enforcement

*Promote self-sufficiency by facilitating receipt of child support payments*

- Establish paternity
- Establish and modify financial and medical support orders
- Collect and disburse support payments
  - Enforce income withholding and court actions

Appropriations Committee

Date January 26, 2011  
Attachment 1-18

# Upcoming Initiatives

- **Healthy Marriage Initiative**
  - Reviewing disincentives to marriage in existing programs
- **Fatherhood Initiative**
- **Outreach to Faith-Based Community Organizations**

# Summary of Expenditures & Persons Served

Annual Expenditures in Millions

	Caseload Unit	SFY 2010		SFY 2011 GBR		SFY 2012 GBR	
		Expenditures	Persons Served	Expenditures	Persons Served	Expenditures	Persons Served
Addiction and Prevention Services							
Substance Abuse Prepaid Inpatient Health Plan (PIHP) (Medicaid)	Annual Persons Served	22,703,893	6,245	19,547,006	269,243	21,146,617	279,717
Addiction And Prevention Services Grants	Annual Persons Served	21,992,929	14,349	22,285,029	15,027	22,583,688	15,542
Mental Health							
Mental Health Prepaid Ambulatory Health Plan (PAHP) for Medicaid & Medikan	Annual Persons Served	192,392,167	55,642	206,496,300	26,993	213,851,200	27,802
Mental Health State Aid Grants	Annual Persons Served	10,233,297	15,492	10,233,297	15,492	-	-
Mental Health Consolidated and Other Grants	Annual Persons Served	21,928,669	62,179	21,286,684	62,179	20,967,747	59,553
Psychiatric Residential Treatment Facilities	Average Monthly Persons	42,172,359	648	48,803,700	575	51,148,800	592
Nursing Facilities For Mental Health	Average Monthly Persons	15,814,601	602	18,562,101	597	18,742,269	607
State Hospitals							
Larned State Hospital (LSH)	Average Daily Census	43,432,561	282	43,177,198	273	44,190,028	273
LSH Sexual Predator Treatment Program	Average Daily Census	12,869,468	202	14,361,750	219	14,659,547	219
Osawatomie State Hospital	Average Daily Census	29,125,352	171	28,921,397	174	29,004,672	174
Rainbow Mental Health Facility	Average Daily Census	8,753,096	47	8,638,394	49	8,711,681	50
Kansas Neurological Institute	Average Daily Census	28,592,019	157	29,075,527	157	28,776,909	142
Parsons State Hospital	Average Daily Census	25,496,871	186	25,435,823	188	25,836,213	188

Appropriations Committee

Date January 26, 2011  
Attachment 1-20

# Summary of Expenditures & Persons Served

Annual Expenditures in Millions

Community Supports and Services	Caseload Unit	SFY 2010		SFY 2011 GBR		SFY 2012 GBR	
		Expenditures	Persons Served	Expenditures	Persons Served	Expenditures	Persons Served
Develomental Disability Waiver	Average Monthly Persons	310,923,343	7,669	315,345,282	7,787	315,096,190	7,858
Physical Disability Waiver	Average Monthly Persons	140,511,924	6,964	125,337,423	6,648	125,261,169	6,674
Traumatic Brain Injury Waiver	Average Monthly Persons	13,085,895	323	13,500,085	350	14,904,469	383
Technology Assistance Walver	Average Monthly Persons	25,053,641	378	25,312,761	420	27,480,950	456
Autism Waiver	Average Monthly Persons	752,930	40	1,207,726	45	1,233,120	47
Develomental Disability Targeted Case Management	Average Monthly Persons	16,797,027	8,954	17,472,000	9,100	17,561,951	9,147
Physical Disability Targeted Case Management	Average Monthly Persons	5,055,523	5,201	5,140,800	5,100	5,140,800	5,100
Positive Behavior Supports	Average Monthly Persons	73,070	15	101,760	20	101,760	20
Head Injury Rehabilitation Hospitals	Average Monthly Persons	10,047,478	40	11,352,000	43	11,500,000	44
Private Institutional Care Facilities for Mental Retardation (ICF/MRs)	Average Monthly Persons	13,606,580	171	14,372,110	171	14,268,438	170
Develomental Disabilies State Aid	-	5,163,174	-	5,163,174	-	5,163,174	-
Developmental Disabilities Direct Service Grants	Annual Persons Served	3,596,190	2,612	3,596,190	2,450		
Community Developmental Disability Organization Administration	Annual Persons Served	7,951,038	12,285	9,466,441	12,540	9,358,265	12,540

Appropriations Committee

Date *January 26, 2011*  
Attachment *1-24*

# Summary of Expenditures & Persons Served

Annual Expenditures in Millions

	Caseload Unit	SFY 2010		SFY 2011 GBR		SFY 2012 GBR	
		Expenditures	Persons Served	Expenditures	Persons Served	Expenditures	Persons Served
Children and Family Services							
Family Preservation Services	Annual Families	10,583,869	2,751	10,179,277	2,622	10,179,277	2,551
Child Abuse/ Neglect Reports	Annual Reports	*	55,730	*	55,275	*	55,275
Foster Care/Reintegration	Average Monthly Children	132,556,160	4,854	139,000,000	5,094	144,450,000	5,218
Adoption Support	Average Monthly Children	31,921,713	7,180	29,390,446	7,566	34,036,311	7,919
Permanent Custodianship	Average Monthly Children	1,228,379	351	1,277,192	359	1,331,642	372
Independent Living Subsidy	Annual Youth	1,606,372	779	1,908,189	931	1,908,189	931
Child Welfare Community Funding	Annual Children	1,877,988	3,798	1,963,203	3,970	1,963,203	3,970
Family Services	Annual Families	1,498,604	394	1,596,881	420	1,596,881	420
Child Support Enforcement (CSE)							
Child Support Collections (not an expenditure)	Average Monthly Cases	194,851,435	127,132	196,525,151	125,848	199,418,856	125,260
CSE Enforcement Contracts	-	11,652,318	-	11,602,318	-	12,491,865	-
Kansas Payment Center	-	4,699,393	-	4,605,994	-	4,970,722	-
CSE Customer Service Center	-	1,522,811	-	1,762,626	-	1,763,307	-

\* Expenditures for child abuse/neglect investigations are included in other budget categories

# Summary of Expenditures & Persons Served

Annual Expenditures in Millions

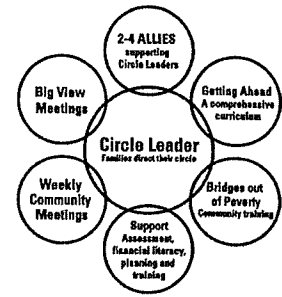
Economic & Employment Support	Caseload Unit	SFY 2010		SFY 2011 GBR		SFY 2012 GBR	
		Expenditures	Persons Served	Expenditures	Persons Served	Expenditures	Persons Served
Adult Protective Services	Annual Persons Served	277,734	7,817	380,000	8,442	380,000	8,442
Child Care Assistance	Average Monthly Children	78,551,063	20,319	75,254,917	20,500	79,021,600	21,550
Kansas Early Head Start	Average Monthly Children	11,342,397	1,177	11,342,397	1,177	-	-
Temporary Assistance for Families (TAF) Employment Services	Average Monthly Adults	11,771,436	12,510	12,042,333	12,789	12,042,333	13,137
Supplemental Nutrition Assistance Assistance Program (SNAP) Employment & Training	Average Monthly Persons	92,199	157	107,438	190	107,436	190
Food Assistance	Average Monthly Persons	383,275,641	259,609	462,234,076	305,800	540,049,021	352,000
TAF Cash Assistance #	Average Monthly Persons	56,587,914	36,972	60,522,527	40,551	57,500,000	42,783
Low Income Energy Assistance Program (LIEAP)	Annual Persons	27,644,462	129,970	37,661,864	140,279	20,676,631	140,279
General Assistance	Average Monthly Persons	3,824,373	2,394	3,024,000	1,924	-	-
Refugee Assistance	Average Monthly Persons	239,749	52	280,800	55	290,400	55
<b>Rehabilitation Services (RS)</b>							
Vocational Rehabilitation	Average Monthly Persons	20,501,983	9,890	23,738,717	10,277	25,012,395	10,963
Blind and Visually Impaired Services	Annual Persons	1,722,316	999	853,274	2,018	866,073	2,756
Disability Determination	Annual Claims Processed	14,561,564	39,981	16,082,982	40,500	16,489,274	40,500
RS Centers for Independent Living Grants	Annual Persons Served	2,655,030	19,177	2,591,208	16,391	2,142,720	16,391

# - FY 2011 includes one-time ARRA funding



## Getting Ahead & Becoming a Circle Leader Circles™ of Hope

The Getting Ahead class and Circles™ empower people to make their own plans and reach their own goals. A main part of Circles™ is a "Matched Circle" - a supportive, befriending relationship made up of one **Circle Leader** who has low resources and 2-4 **Circle Allies**. Circle Allies join the Circle Leader in moving towards having adequate money, meaning and friends. Everyone in the Circle benefits from the friendships that are formed.



### Who can be a Circle Leader? Harvey County residents who:

- are frustrated about just "getting by" and want to learn more about ways to "get ahead"
- are at least 18 years old and currently are ready, willing and able to make changes
- have low resources, including financial (living at or below 200% of poverty)
- are able and willing to work or can benefit from job training
- are willing to build new relationships which will provide support and connections
- can commit to attending regular meetings and keeping appointments

### The referral process includes 3 steps:

1. Turn in an Intake application.
2. Meet with Circles staff and Circle Leaders.
3. The Circles Team makes sure Circles is a good fit for you.

### Steps to Becoming a Circle Leader:

1. Attend, participate and graduate from a 15-week **Getting Ahead** co-investigation.
  - The Getting Ahead class meets every Tuesday night for 15 weeks, for 2½ hours.
  - Each Getting Ahead class includes a meal, free childcare, and scholarship for participation (a \$20 Dillon's certificate for each class attended).
  - Getting Ahead class members learn the "hidden rules" of class, assess their own resources (not just money), and develop their own plan to change their situation.
2. Getting Ahead grads decide to become a **Circle Leader** & make an 18-month commitment.
3. Be matched with 2-4 **Circle Allies** from the community.
4. Attend weekly participant meetings on Tuesday nights.
5. Share your strengths and give back to the community.

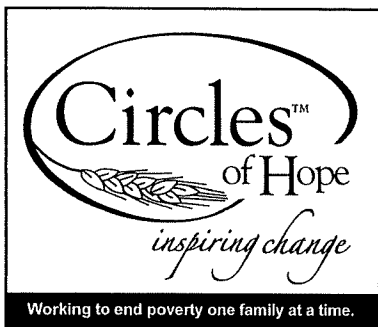
### Circles is NOT for you if any of these describe your life:

- Being in crisis (e.g., homeless, being evicted). Circles is not a crisis program and can't help with immediate, emergency needs. It is a process people commit to over time.
- Being on disability without any prospect of getting off or earning some extra money under the disability program.
- Living in a domestic violence situation. Circles doesn't work well for people who are experiencing a lot of chaos and turmoil in their lives.
- Addictions. Circles participants must have 6 months of being clean/sober. People dealing with untreated alcohol, drug & other addictions usually are unable to work on "getting ahead."
- Mental health issues that are untreated - person is struggling to function on a day-to-day basis.
- One partner wants to join Circles but the other doesn't. Circles does not work well when one spouse or significant other is not engaged. Allies work with the whole family.

**Circles™ of Hope wants to partner with you to explore the causes of poverty and support you in developing a plan to increase your resources and have a more stable, secure future!**

For more information, contact Wanda or Myrna at 284-0000, [info@peaceconnections.org](mailto:info@peaceconnections.org), or stop by 612 N. Main (Peace Connections, where Circles has an office)

Appropriations Committee  
Date January 26, 2011  
Attachment 2



## CIRCLE LEADER Application

**We are so glad that you are interested!**

As a participant, you will explore the causes of poverty, the hidden rules of class, and the resources needed for stability. You will set your own goals in relation to resources, such as job, friends, education, or money, which are important in your life. Allies/friends from our community will work alongside you toward meeting your goals.

Being a part of Circles® means you are ready and willing to make changes to move to a place where you have a stable, secure future. It will take commitment, communication, determination and regular weekly participation.

Name \_\_\_\_\_ Date \_\_\_\_\_

Address \_\_\_\_\_ City \_\_\_\_\_

State \_\_\_\_\_ Zip \_\_\_\_\_ Phone(s) \_\_\_\_\_

Email \_\_\_\_\_ Best way to contact you \_\_\_\_\_

Married Single Other \_\_\_\_\_ Birth date \_\_\_\_\_

Please list the names of all adults in your household: \_\_\_\_\_

Please list names and ages of children who live with you:

Name \_\_\_\_\_ Age \_\_\_\_\_ Name \_\_\_\_\_ Age \_\_\_\_\_

Name \_\_\_\_\_ Age \_\_\_\_\_ Name \_\_\_\_\_ Age \_\_\_\_\_

Will you need childcare for the Tuesday evening meetings? ☐ Yes ☐ No

How did you hear about Circles® of Hope and the Getting Ahead class?

Are you currently ☐ working full-time? ☐ working part-time ☐ not working?

If not working, reason(s) \_\_\_\_\_

Do you have a driver's license? ☐ Yes ☐ No A working vehicle? ☐ Yes ☐ No

Will you need transportation to weekly meetings? ☐ Yes ☐ No

Is your household income at, or under 200% of the Federal Poverty Guidelines?  
(see back page for the guidelines) ☐ Yes ☐ No

Appropriations Committee

Date January 26, 2011

Attachment 2-2

**Place a check next to the areas where you are experiencing challenges:**

- ☐ Employment   ☐ Transportation   ☐ Training/Education   ☐ Budget  
☐ Legal   ☐ Parenting   ☐ Isolation/Friendships   ☐ Housing  
☐ Child care   ☐ Alcohol/Drugs   ☐ Health care costs   ☐ Other \_\_\_\_\_

I am willing to participate in an interview with Circles staff to find out together whether Circles® is a good fit for me and my family. **Please initial** \_\_\_\_\_

I am willing to participate in a 15 week "Getting Ahead in a Just Getting By World" training course. (Tuesday nights, about 2.5 hours, free childcare/meal, stipend for attendance and work done in course) **Please initial** \_\_\_\_\_

Following successful completion of the Getting Ahead course, I am willing to participate in weekly Circles® community meetings. This is one way I will show I am committed to Circles® and am motivated to get ahead, before I can be matched with allies. (Tuesday nights, childcare/meal provided) **Please initial** \_\_\_\_\_

Following completion of Getting Ahead, if I am ready, willing and able to continue and become a Circle Leader, I will meet once a month with my allies. **Please initial** \_\_\_\_\_

I understand that being involved in Circles®, from the Getting Ahead class through being matched with my allies and working on my goals to become self-sufficient, is an 18 month commitment. **Please initial** \_\_\_\_\_

\_\_\_\_\_  
**Signature**

\_\_\_\_\_  
**Date**

This is an application for the opportunity to become a Circle Leader. It does not guarantee you will be accepted and it does not mean you are required to be a Circle Leader. You will be contacted for a personal visit to determine if the Getting Ahead class and Circles® is a good fit for you. Thank you for your interest and for taking the time to fill out this application.

**Please return application to:**

**Circles® of Hope at Peace Connections, 612 N. Main, Newton, KS 67114  
316-284-0000 or info@peaceconnections.org**

200% Federal Poverty Guidelines for 2010

Family Size	1 Months Income	3 Months Income
1	\$1,805	\$5,415
2	\$2,428	\$7,285
3	\$3,052	\$9,155
4	\$3,675	\$11,025
5	\$4,298	\$12,895
6	\$4,922	\$14,765
7	\$5,545	\$16,635
8	\$6,168	\$18,505

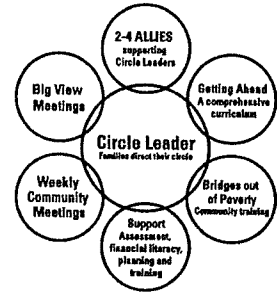
Appropriations Committee

Date January 26, 2011  
Attachment 2-3

## Getting Ahead & Becoming a Circle Leader

### Circles™ of Hope

The Getting Ahead class and Circles™ empower people to make their own plans and reach their own goals. A main part of Circles™ is a "Matched Circle" - a supportive, befriending relationship made up of one **Circle Leader** who has low resources and 2-4 **Circle Allies**. Circle Allies join the Circle Leader in moving towards having adequate money, meaning and friends. Everyone in the Circle benefits from the friendships that are formed.



#### Who can be a Circle Leader? Harvey County residents who:

- are frustrated about just "getting by" and want to learn more about ways to "get ahead"
- are at least 18 years old and currently are ready, willing and able to make changes
- have low resources, including financial (living at or below 200% of poverty)
- are able and willing to work or can benefit from job training
- are willing to build new relationships which will provide support and connections
- can commit to attending regular meetings and keeping appointments

#### The referral process includes 3 steps:

1. Turn in an Intake application.
2. Meet with Circles staff and Circle Leaders.
3. The Circles Team makes sure Circles is a good fit for you.

#### Steps to Becoming a Circle Leader:

1. Attend, participate and graduate from a 15-week **Getting Ahead** co-investigation.
  - The Getting Ahead class meets every Tuesday night for 15 weeks, for 2½ hours.
  - Each Getting Ahead class includes a meal, free childcare, and scholarship for participation (a \$20 Dillon's certificate for each class attended).
  - Getting Ahead class members learn the "hidden rules" of class, assess their own resources (not just money), and develop their own plan to change their situation.
2. Getting Ahead grads decide to become a **Circle Leader** & make an 18-month commitment.
3. Be matched with 2-4 **Circle Allies** from the community.
4. Attend weekly participant meetings on Tuesday nights.
5. Share your strengths and give back to the community.

#### Circles is NOT for you if any of these describe your life:

- Being in crisis (e.g., homeless, being evicted). Circles is not a crisis program and can't help with immediate, emergency needs. It is a process people commit to over time.
- Being on disability without any prospect of getting off or earning some extra money under the disability program.
- Living in a domestic violence situation. Circles doesn't work well for people who are experiencing a lot of chaos and turmoil in their lives.
- Addictions. Circles participants must have 6 months of being clean/sober. People dealing with untreated alcohol, drug & other addictions usually are unable to work on "getting ahead."
- Mental health issues that are untreated - person is struggling to function on a day-to-day basis.
- One partner wants to join Circles but the other doesn't. Circles does not work well when one spouse or significant other is not engaged. Allies work with the whole family.

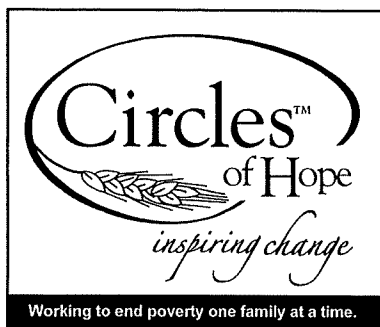
**Circles™ of Hope wants to partner with you to explore the causes of poverty and support you in developing a plan to increase your resources and have a more stable, secure future!**

For more information, contact Wanda or Myrna at 284-0000, [info@peaceconnections.org](mailto:info@peaceconnections.org), or stop by 612 N. Main (Peace Connections, where Circles has an office)

Appropriations Committee

Date January 26, 2011

Attachment 2-4



## CIRCLE LEADER Application

**We are so glad that you are interested!**

As a participant, you will explore the causes of poverty, the hidden rules of class, and the resources needed for stability. You will set your own goals in relation to resources, such as job, friends, education, or money, which are important in your life. Allies/friends from our community will work alongside you toward meeting your goals.

Being a part of Circles® means you are ready and willing to make changes to move to a place where you have a stable, secure future. It will take commitment, communication, determination and regular weekly participation.

Name \_\_\_\_\_ Date \_\_\_\_\_

Address \_\_\_\_\_ City \_\_\_\_\_

State \_\_\_\_\_ Zip \_\_\_\_\_ Phone(s) \_\_\_\_\_

Email \_\_\_\_\_ Best way to contact you \_\_\_\_\_

Married Single Other \_\_\_\_\_ Birth date \_\_\_\_\_

Please list the names of all adults in your household: \_\_\_\_\_

Please list names and ages of children who live with you:

Name \_\_\_\_\_ Age \_\_\_\_\_ Name \_\_\_\_\_ Age \_\_\_\_\_

Name \_\_\_\_\_ Age \_\_\_\_\_ Name \_\_\_\_\_ Age \_\_\_\_\_

Will you need childcare for the Tuesday evening meetings? ☐ Yes ☐ No

How did you hear about Circles® of Hope and the Getting Ahead class?

Are you currently ☐ working full-time? ☐ working part-time ☐ not working?

If not working, reason(s) \_\_\_\_\_

Do you have a driver's license? ☐ Yes ☐ No A working vehicle? ☐ Yes ☐ No

Will you need transportation to weekly meetings? ☐ Yes ☐ No

Is your household income at, or under 200% of the Federal Poverty Guidelines?  
(see back page for the guidelines) ☐ Yes ☐ No

Appropriations Committee

Date January 26, 2011

Attachment 2-5

**Place a check next to the areas where you are experiencing challenges:**

- ☐ Employment   ☐ Transportation   ☐ Training/Education   ☐ Budget  
☐ Legal   ☐ Parenting   ☐ Isolation/Friendships   ☐ Housing  
☐ Child care   ☐ Alcohol/Drugs   ☐ Health care costs   ☐ Other \_\_\_\_\_

I am willing to participate in an interview with Circles staff to find out together whether Circles® is a good fit for me and my family. **Please initial** \_\_\_\_\_

I am willing to participate in a 15 week "Getting Ahead in a Just Getting By World" training course. (Tuesday nights, about 2.5 hours, free childcare/meal, stipend for attendance and work done in course) **Please initial** \_\_\_\_\_

Following successful completion of the Getting Ahead course, I am willing to participate in weekly Circles® community meetings. This is one way I will show I am committed to Circles® and am motivated to get ahead, before I can be matched with allies. (Tuesday nights, childcare/meal provided) **Please initial** \_\_\_\_\_

Following completion of Getting Ahead, if I am ready, willing and able to continue and become a Circle Leader, I will meet once a month with my allies. **Please initial** \_\_\_\_\_

I understand that being involved in Circles®, from the Getting Ahead class through being matched with my allies and working on my goals to become self-sufficient, is an 18 month commitment. **Please initial** \_\_\_\_\_

\_\_\_\_\_  
**Signature**

\_\_\_\_\_  
**Date**

This is an application for the opportunity to become a Circle Leader. It does not guarantee you will be accepted and it does not mean you are required to be a Circle Leader. You will be contacted for a personal visit to determine if the Getting Ahead class and Circles® is a good fit for you. Thank you for your interest and for taking the time to fill out this application.

**Please return application to:**

**Circles® of Hope at Peace Connections, 612 N. Main, Newton, KS 67114  
316-284-0000 or [info@peaceconnections.org](mailto:info@peaceconnections.org)**

200% Federal Poverty Guidelines for 2010

Family Size	1 Months Income	3 Months Income
1	\$1,805	\$5,415
2	\$2,428	\$7,285
3	\$3,052	\$9,155
4	\$3,675	\$11,025
5	\$4,298	\$12,895
6	\$4,922	\$14,765
7	\$5,545	\$16,635
8	\$6,168	\$18,505

Appropriations Committee

Date January 26, 2011  
Attachment 2-6