

Approved: 5-6-11
Date

MINUTES OF THE HOUSE CORRECTIONS AND JUVENILE JUSTICE COMMITTEE

The meeting was called to order by Chairperson Pat Colloton at 1:30 p.m. on January 18, 2011 in Room 144-S of the Capitol.

All members were present

Committee staff present:

Sean Ostrow, Office of the Revisor of Statutes
Jason Thompson, Office of the Revisor of Statutes
Lauren Douglass, Legislative Research
Robert Allison-Gallimore, Legislative Research
Jackie Lunn, Committee Assistant

Conferees appearing before the Committee:

None

Others attending:

See attached.

Chairperson Colloton called the meeting to order and introduced the new staff person for the committee from Legislative Research, Robert Allison-Gallimore.

Chairperson Colloton opened the floor for bill introductions. She recognized State Representative Wetta who requested a bill jointly with State Representative DeGraaf regarding the restriction of drugs containing pseudoephedrine in making them to require prescriptions. **Representative Smith moved the request as a committee bill. Representative McCray-Miller seconded. Motion carried.**

Chairperson Colloton opened the hearing on **HB 2001-Local law enforcement training reimbursement fund; expenditures approved by commission on peace officers' standards and training.** She introduced Ed Pavey, Kansas Law Enforcement Training Center, located in Hutchinson, Kansas, to testify as a proponent of the bill. Mr. Pavey presented a written copy of his testimony, which can be found in its entirety in the offices of Legislative Administrative Services. (Attachment 1)

A question and answer session followed the conclusion of Mr. Pavey's testimony.

With no others to speak or testify to the bill, Chairperson Colloton closed the hearing on HB 2001.

The meeting was adjourned at 2:00 pm with the next meeting scheduled for January 19, 2011 at 1:30 pm in room 144-S.

DATE: 1-18-10

[illegible]

Testimony in Support of HB No. 2001

Presented by Ed H. Pavey, Director, Kansas Law Enforcement Training Center
Appearing before the House Standing Committee on Corrections and Juvenile Justice

January 18, 2011

The Legislature established the Kansas Law Enforcement Training Commission, the professional regulatory agency for law enforcement officers, in 1982. At that time, the Legislature did not identify a separate funding source or staff to support the commission's licensing and disciplinary functions. The staff at the Kansas Law Enforcement Training Center (KLETC), a unit of Continuing Education at the University of Kansas, began providing limited administrative support.

In 1998, KLETC hired a retired Kansas Bureau of Investigation agent to serve the commission as a full-time investigator. Prior to this date, commission members, who are unpaid volunteers, investigated allegations of law enforcement officer misconduct. The investigative caseload and the administrative support needs continued to increase. However, because the commission had no independent funding source, the operational needs of the commission continued to drain the financial and staff training resources of KLETC. Moreover, the regulatory function began to interfere with KLETC's ability to provide training and guidance when agencies became cautious about contacting those who they perceived to be the regulatory staff.

Recognizing the need to separate the training function of KLETC from the regulatory function of the commission, The Legislature in 2006 established the Kansas Commission on Peace Officers' Standards and Training (KSCPOST) as a separate state agency with its own distinct budget and staff. The responsibility for investigations, administrative hearings, certification record maintenance, employment history tracking, and other administrative support shifted from KLETC to the new agency.

The legislation that established the KSCPOST as a separate agency did not reassign the local law enforcement training reimbursement fund. When the Legislature established the fund in 1992 to reimburse municipalities that operated satellite basic training programs, the staff of KLETC acting as staff for the commission assumed the responsibility for administering the fund. KSA 74-5620 establishes the KSCPOST's responsibility for determining the distribution formula and reviewing the programs of agencies receiving reimbursement funds. The KSCPOST has been performing these functions; however, KLETC and the University of Kansas retained the responsibility for actually disbursing the funds at the KSCPOST's direction.

HB No.2001 shifts the control of the fund from the KLETC and the University of Kansas to the KSCPOST and the Department of Administration (DOA). The change of account assignment remedies an oversight from the 2006 legislation. KLETC had previously approached the DOA to reassign the account, but the DOA after review determined that a change in the administration of the fund would require legislative approval. HB No. 2001 is the language that the Revisor's Office determined was necessary to give the DOA the authority to reassign the fund to the KSCPOST.





KLETC IN BRIEF

Established by the Kansas Legislature in 1968 as the central law enforcement training facility for our state, the Kansas Law Enforcement Training Center (KLETC) serves as the headquarters for all law enforcement training in Kansas.

KLETC, a unit of the University of Kansas Continuing Education and University Outreach is located at the former naval air station, which is situated south of the City of Hutchinson and west of the City of Yoder in Reno County, Kansas. Its mission, as expressed in the Law Enforcement Training Act, K.S.A. 74-5601 et. seq. is

"the promotion and development of improved law enforcement personnel and procedures throughout the state, and the training center shall offer to qualified applicants such programs and courses of instruction designed to fulfill this end."

KLETC directly trains the overwhelming majority of municipal, county and state law enforcement officers in Kansas, and oversees, supervises and monitors the training of the remaining officers at seven authorized and certified academy programs operated by local law enforcement agencies and the Kansas Highway Patrol.

Moreover, no municipal, county or state law enforcement agency pays any tuition in connection with the training and/or room and board furnished to their officers by KLETC during the mandated basic training.

KLETC trains, on average, over 400 officers annually in basic training-related programs. Last year, KLETC afforded continuing education, specialized training and distance learning programs to nearly 4,700 Kansas officers at KLETC as well as at other training sites across our state.

Kansas law enforcement officers must satisfactorily complete a minimum of 560 hours of basic law enforcement training to attain their law enforcement certification. Currently, the 560-hour program is conducted in a 14-week format. Additionally, to maintain law enforcement certification each officer must obtain 40-hours of continuing education annually in subjects related directly to law enforcement.

Established by K.S.A. 74-5619, and enabled by K.S.A. 20-362 and 20-362(e), funding for the training center is currently provided from the law enforcement training center fund. The law enforcement training center fund receives \$15 from the docket fee charged in criminal and traffic-related cases in state district courts. This level of remittance from the docket fee was set by the legislature in its session of 2006. The fund also receives \$11.50 from the docket fee charged in criminal and traffic - related cases in municipal courts. This

level of remittance from the docket fee was set by the legislature in its session of 2006. No monies from the general revenue of the State of Kansas are involved in the funding of the operations of the center. This funding principle may be thought of as the "user tax" concept of funding for law enforcement training. That is, the monies generated come from those individuals who violate the laws of the State of Kansas or municipalities. Law-abiding citizens do not participate in paying for law enforcement training.

KLETC has an authorized staff of 39 full-time and five part-time personnel. Additionally, KLETC employs contractual service companies for cleaning, security, laundry and cafeteria services. KLETC employees are dedicated and committed to active partnerships with the law enforcement community by providing comprehensive, progressive, quality training and support for Kansas law enforcement.

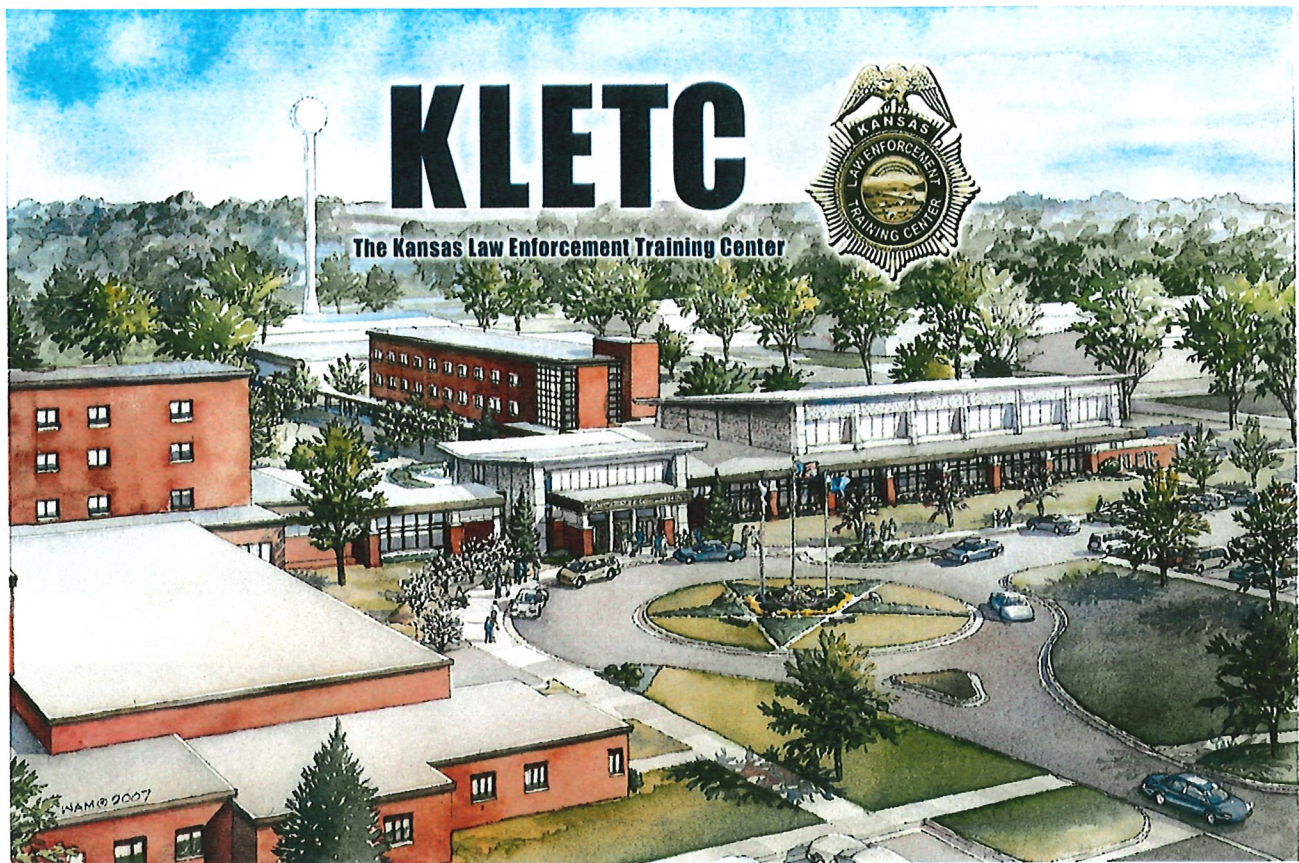
History of Capital Improvements 1991-2010

In compliance with promises made to the legislature in 1986, KLETC employed an architect to develop a master plan for the facility. This plan encompassed both repairs and rehabilitation to the existing facility as well as the construction of desperately needed additional space. Construction of the multipurpose/gymnasium, locker rooms, restrooms and administrative offices was completed in 1991. Two new classroom/seminar rooms, as well as a classroom/conference room were completed in 1993. A complete remodeling of the firearms range was completed in 1995. It included the construction of a range house with a classroom, firearms cleaning area, ammunition storage area and two offices, plus the construction of a range tower building for the Range Master to control and monitor training at the range. Construction of a new, four-story, 32,650 square foot, 107-bed residential hall commenced in March 1996, and was completed in September 1997. Renovation of the kitchen/dining areas and instructor office space commenced in October 1997, and was completed in July 1998. Reconstruction of KLETC's existing parking lot at the main facility and at the firearms range commenced in the spring of 2001 and was completed in October 2001. The renovated parking facilities feature a parking capacity of over 200 vehicles and provide additional security lighting at the main facility. In October 2002 the residential hall sleeping capacity expanded from 107 to 142 beds to accommodate increased enrollments.

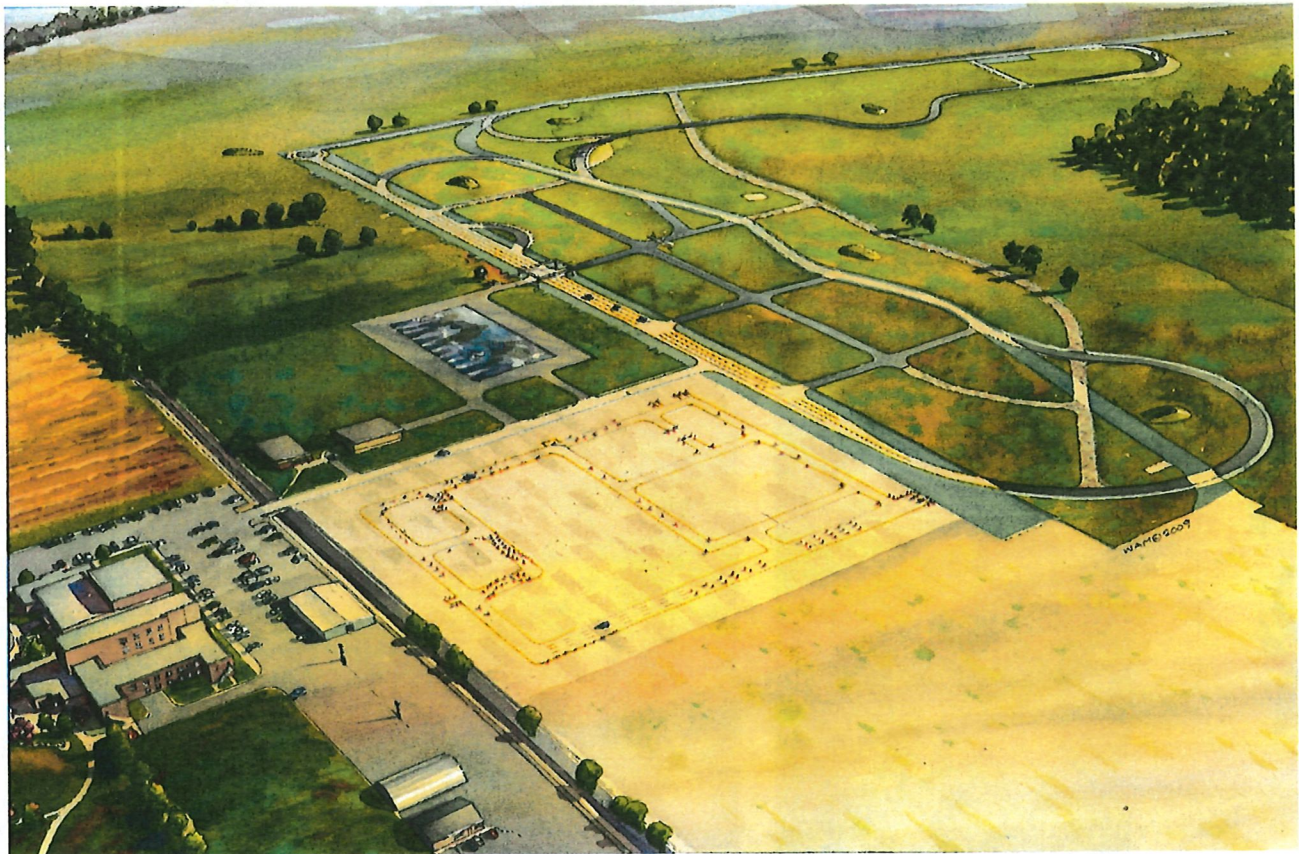
Because additional office and classroom space was needed, in late 2003 the University of Kansas purchased the former 20,000 square foot Collins Corporation office building located a short one-half block from KLETC's main campus facilities. Following completion of a renovation and construction project to create three new spacious classrooms and the revitalization of existing office space, KLETC moved all administrative and support staff functions to this building in September 2004.

In 2006, the Kansas Legislature and Kansas Board of Regents approved an architectural program for KLETC. The architectural program was divided into two construction phases. Phase I included a new 63-room residence hall with 126 sleeping beds, a multipurpose training facility capable of being divided into three separate training spaces, and expansion of the existing dining facility to accommodate additional student officers. Phase I was completed in June 2009. Phase II, a 1.78 mile emergency vehicle driver training course w/skid pad, training classroom and vehicle storage buildings, a tactical shooting training building and other associated facilities improvements was completed in late spring of 2010. Total legislative authorization for both Phases: \$16.4 million. The 2006 Legislature increased the municipal and district court docket fee remittance levels to fund the architectural plan and provide additional operations funding for the Center. Rev. 8/10

1-3



KLETC's 173-acre campus near Yoder, KS



KLETC's 1.78 mile Emergency Vehicle Operations Driver Training Course & Skid Pad



KLETC



Artist's Rendering – Driving Course



KLETC Lobby & Integrity Auditorium



East Dormitory



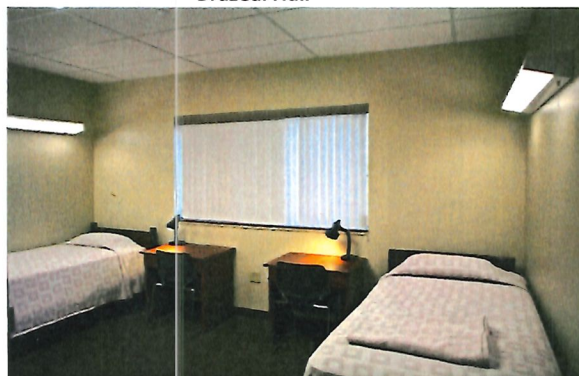
Brazeal Hall



Welch's Alley Training House



Integrity Auditorium



Dormitory Room



Wall of Honor

1-5