

MINUTES OF THE EDUCATION BUDGET COMMITTEE

The meeting was called to order by Chairwoman Lana Gordon at 3:30 pm on Feb 8, 2011, in Room 159-S of the Capitol.

All members were present.

Committee staff present:

Reagan Cussimano, Fiscal Analyst, KLRD
Shirley Morrow, Fiscal Analyst, KLRD
Bernadine Lloyd, Committee Assistant

Conferees appearing before the committee:

Jennie Chinn, Executive Director, Kansas State Historical Society
Julie Mulvihill, Director, Humanities Council
Llewellyn Crain Executive Director, KAC

Others Attending:

See attached list.

Shirley Morrow, KLRD, presented a brief overview of a draft copy of the State Historical State budget of FY 2011 and FY 2012. She also gave handouts on the National Endowment for the Arts, Executive Reorganization Order No. 39, and Total State Arts Agency Revenue Sources, Selected States. (Attachment 1)

Conferees:

Landon Fulmer, Policy Director, submitted and presented testimony on Governor Brownback's Arts Commission Reorganization. (Attachment 2)

Jennie Chin, Executive Director, Kansas State Historical Society, submitted and presented testimony on Government Accountability, Education, Economic Development, History of Budget Reductions, FY 2012 Budget, and 2012 Goals. (Attachment 3)

Julie Mulvihill, Director, Humanities Council, submitted and presented the Kansas Humanities Council FY12 Budget. (Attachment 4)

Llewellyn Crain, Executive Director, KAC, submitted and presented testimony on Current Funding. (Attachment 5)

A question and answer session followed each presentation.

The next meeting is scheduled for February 9, 2011 in 159-S.

The meeting adjourned at 4:50 pm.

EDUCATION BUDGET COMMITTEE

3:30pm

Room 159S, State Capitol

GUEST LIST

DATE: 2-8-11

NAME	REPRESENTING
Jenni Chin	Ks State Historical So
Debbie White	" " " "
Julie Mulvihill	Ks Humanities Council
Glewellyn Ori	Kansas Arts Commission
Chris Howell	Kansas Arts Commission
Bill Brady	C.S.
Aimee Rosenow	Intern - O'Brien

Expenditure	Actual FY 2010	Agency Est. FY 2011	Gov. Rec. FY 2011	Agency Req. FY 2012	Gov. Rec. FY 2012
Operating Expenditures:					
State General Fund	\$ 5,385,039	\$ 5,244,732	\$ 5,244,732	\$ 5,609,239	\$ 5,271,630
Other Funds	5,573,164	3,310,213	3,310,213	3,240,616	3,410,616
TOTAL	\$ 10,958,203	\$ 8,554,945	\$ 8,554,945	\$ 8,849,855	\$ 8,682,246
Capital Improvements:					
State General Fund	\$ 188,612	\$ 163,447	\$ 125,447	\$ 255,500	\$ 125,000
Other Funds	442,870	168,082	168,082	171,900	171,900
TOTAL	\$ 631,482	\$ 331,529	\$ 293,529	\$ 427,400	\$ 296,900
GRAND TOTAL	\$ 11,589,685	\$ 8,886,474	\$ 8,848,474	\$ 9,277,255	\$ 8,979,146

Percentage Change:

Operating Expenditures:

State General Fund	(7.1)%	(2.6)%	(2.6)%	6.9%	0.5%
All Funds	28.6	(21.9)	(21.9)	3.4	1.5
FTE Positions	134.0	134.0	134.0	134.0	117.0
Non-FTE Perm. Uncl. Pos.	4.5	3.5	3.5	3.5	3.5
TOTAL	138.5	137.5	137.5	137.5	120.5

AGENCY OVERVIEW

The State Historical Society was founded in 1875 by Kansas newspaper editors and publishers to maintain records of the state's founding. Today, that mission has expanded to include identifying, collecting, preserving, and interpreting materials and information pertaining to Kansas history. The goal is to increase awareness and appreciation of Kansas history and how it relates to people's lives. In 1905, the State Historical Society became the official archival agency of the state and it is the state's trustee in administering state-owned historic sites. The agency administers both state and federal historic preservation programs and provides curricular materials on state history to K-12 schools.

The Kansas State Historical Society budget contains pass-through funds for two other organizations: The Kansas Humanities Council, a not-for-profit organization; and the Kansas Heritage Center, which is operated through the Dodge City school district (USD 443). The Kansas Humanities Council was created in 1972 and is governed by a 22-member board of

DRAFT

directors, five of whom are appointed by the Governor, to provide outreach in support of cultural programs in Kansas. The Kansas Heritage Center's mission is to promote Kansas' heritage by collecting, creating, and publishing resource materials for use by students, teachers, and others interested in the history of Kansas, the Great Plains, and the "Old West".

MAJOR ISSUES FROM PRIOR YEARS

The **2007 Legislature** approved \$50,000 from the State General Fund for the continuation and further development of the Kansas Humanities Council Prime Time Family Reading Program in FY 2008. The Legislature also approved the addition of \$70,000 from the State General Fund to continue the Humanities Council's Kansans Tell Their Stories Program.

The **2008 Legislature** approved \$149,500 from the State General Fund to begin a two-year project for the preservation of electronic records in FY 2009. The project will result in the creation of a strategic plan for an electronic state archive, the hiring of consultants to build a strategic information management plan, and the hiring of a digital archives specialist.

The **2009 Legislature** passed 2009 Senate Concurrent Resolution (SCR) 1604, which encouraged the State Historical Society to develop plans for calendar year 2011 to commemorate the sesquicentennial (150th anniversary) of Kansas' admission to the Union. The Legislature also enacted 2009 Senate Substitute for HB 2365, which capped historic preservation tax credits at \$3,750,000 for FY 2010 and FY 2011. In comparison, the Historical Society certified \$15.3 million in eligible state tax credits in FY 2009.

The **2010 Legislature** deleted \$134,530, all from the State General Fund, to achieve a State General Fund reduction of approximately 2.5 percent from the Governor's recommendation for FY 2011.

BUDGET SUMMARY AND KEY POINTS

FY 2011 – Current Year. The **agency** requests revised FY 2011 operating expenditures totaling \$8,554,945, a decrease of \$453,978, or 5.0 percent, below the amount approved by the 2010 Legislature. The decrease is mainly attributable to the agency's reassessment and reduction of fee funds assigned to the different divisions. Requested State General Fund expenditures total \$5,244,732, a decrease of \$122,441, or 2.3 percent, below the approved amount. The request includes 134.0 FTE positions. The agency requests \$38,000, all from the State General Fund, in supplemental capital improvement funding, for the emergency repairs to the Fort Hays Visitor Center. Absent the supplemental request, State General Fund expenditures would be \$5,206,732.

The **Governor** concurs with the agency's revised estimate for operating expenditures but does not recommend the supplemental funding for capital improvements.

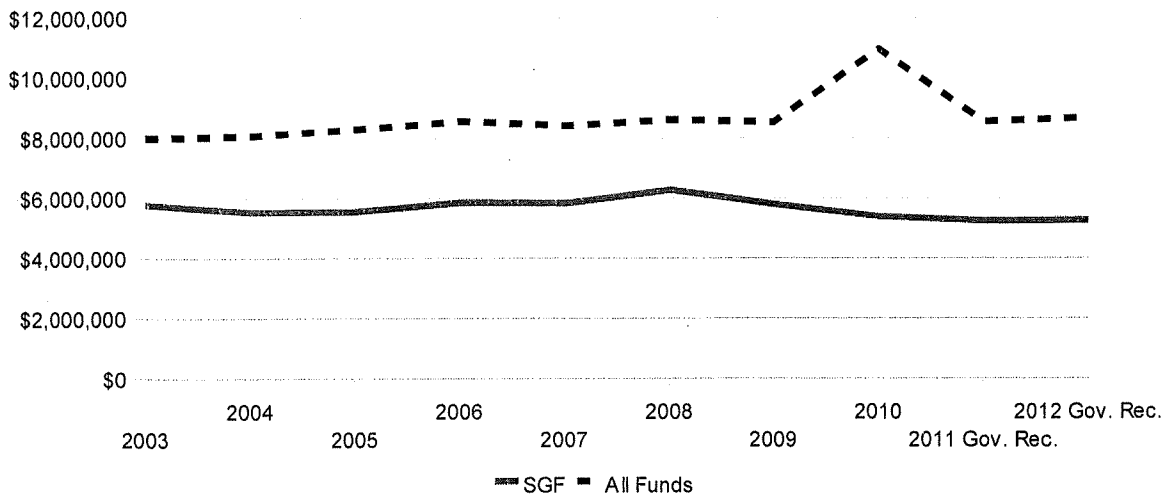
FY 2012 – Budget Year. The **agency** requests FY 2012 operating expenditures of \$8,849,855, an increase of \$294,910, or 3.4 percent, above the revised FY 2011 estimate. The request includes State General Fund expenditures of \$5,609,239, an increase of \$364,507, or 6.9 percent, above the revised FY 2011 estimate. The request also contains 134.0 FTE positions and an operating enhancement of \$264,102, all from the State General Fund. The enhancement includes reclassifying and funding 2.0 existing FTE positions.

Absent the enhancement, the agency request totals \$8,585,753, an increase of \$30,808, or 0.4 percent, above the revised FY 2011 estimate. The request includes \$5,345,137 from the State General Fund. An increase of \$100,405, or 1.9 percent, above the revised FY 2011 estimate. The increase is attributable to increases in group health hospitalization benefit costs and computer expenses.

The **Governor** recommends FY 2012 operating expenditures of \$8,682,246, a decrease of \$167,609, or 1.9 percent, below the agency's request. It is a State General Fund decrease of \$337,609, or 6.0 percent, below the agency's request. The recommendation is an increase of \$127,301, or 1.5 percent, above the FY 2011 revised estimate. The increase is attributable to the Governor's acceptance of the agency's reduced resource budget and is offset by the Governor's recommendation for an addition of \$200,000, all from the State General Fund, as a one-time pass through to the 501(c)(3) Kansas Arts Council. The Governor also recommends a decrease in 17.0 FTE positions.

BUDGET TRENDS

OPERATING EXPENDITURES FY 2003–FY 2012



OPERATING EXPENDITURES FY 2003–FY 2012

Fiscal Year	SGF	% Change	All Funds	% Change	FTE
2003	\$ 5,778,756	(1.2)%	\$ 7,993,245	(2.4)%	136.5
2004	5,534,471	(4.2)	8,077,282	1.1	136.5
2005	5,560,893	0.5	8,287,546	2.6	136.5
2006	5,862,400	5.4	8,552,012	3.2	134.0
2007	5,828,219	(0.6)	8,403,535	(1.7)	134.0
2008	6,274,378	7.7	8,606,810	2.4	134.0
2009	5,797,285	(7.6)	8,521,767	(1.0)	134.0
2010	5,385,039	(7.1)	10,958,203	28.6	134.0
2011 Gov. Rec.	5,244,732	(2.6)	8,554,945	(21.9)	134.0
2012 Gov. Rec.	5,271,630	0.5	8,682,246	1.5	117.0
Ten-Year Change Dollars/Percent	\$ (507,126)	(8.8)%	689,001	8.6%	(19.5)

Summary of Operating Budget FY 2010-FY 2012

1-5

State Historical Society

		Agency Request					Governor's Recommendation				
		Actual FY 2010	Estimate FY 2011	Request FY 2012	Dollar Change from FY 11	Percent Change From FY 11	Rec. FY 2011	Rec. FY 2012	Dollar Change from FY 11	Percent Change from FY 11	
By Program:											
Administration	\$	2,128,244	\$ 2,325,456	\$ 2,362,067	\$ 36,611	1.6%	\$ 2,325,456	\$ 2,514,681	\$ 189,225	8.1%	
Education Outreach		632,546	681,435	681,129	(306)	(0.1)	681,435	665,129	(16,306)	(2.4)	
Archives		1,818,781	1,872,984	2,076,515	203,531	10.9	1,872,984	1,792,413	(80,571)	(4.3)	
Cultural Resources		5,130,287	2,395,565	2,417,491	21,926	0.9	2,395,565	2,416,370	20,805	0.9	
Historic Properties		725,984	733,817	747,670	13,853	1.9	733,817	728,670	(5,147)	(0.7)	
Museum		522,361	545,688	564,983	19,295	3.5	545,688	564,983	19,295	3.5	
TOTAL	\$	10,958,203	\$ 8,554,945	\$ 8,849,855	\$ 294,910	3.4%	\$ 8,554,945	\$ 8,682,246	\$ 127,301	1.5%	
By Major Object of Expenditure:											
Salaries and Wages	\$	5,275,102	\$ 5,690,099	\$ 5,855,789	\$ 165,690	2.9%	\$ 5,690,099	\$ 5,634,387	\$ (55,712)	(1.0)%	
Contractual Services		1,369,511	1,453,497	1,445,265	(8,232)	(0.6)	1,453,497	1,445,265	(8,232)	(0.6)	
Commodities		138,925	255,757	253,194	(2,563)	(1.0)	255,757	253,194	(2,563)	(1.0)	
Capital Outlay		110,827	63,604	197,308	133,704	210.2	63,604	55,700	(7,904)	(12.4)	
Subtotal - Operations	\$	6,894,365	\$ 7,462,957	\$ 7,751,556	\$ 288,599	3.9%	\$ 7,462,957	\$ 7,388,546	\$ (74,411)	(1.0)%	
Aid to Local Units		138,772	23,402	129,713	106,311	454.3	23,402	128,543	105,141	449.3	
Other Assistance		3,925,066	1,068,586	968,586	(100,000)	(9.4)	1,068,586	1,165,157	96,571	9.0	
TOTAL	\$	10,958,203	\$ 8,554,945	\$ 8,849,855	\$ 294,910	3.4%	\$ 8,554,945	\$ 8,682,246	\$ 127,301	1.5%	
Financing:											
State General Fund	\$	5,385,039	\$ 5,244,732	\$ 5,609,239	\$ 364,507	6.9%	\$ 5,244,732	\$ 5,271,630	\$ 26,898	0.5%	
Heritage Trust Fund		3,538,504	1,032,595	1,036,201	3,606	0.3	1,032,595	1,036,201	3,606	0.3	
All Other Funds		2,034,660	2,277,618	2,204,415	(73,203)	(3.2)	2,277,618	2,374,415	96,797	4.2	
TOTAL	\$	10,958,203	\$ 8,554,945	\$ 8,849,855	\$ 294,910	3.4%	\$ 8,554,945	\$ 8,682,246	\$ 127,301	1.5%	

BUDGET OVERVIEW

A. FY 2011 – Current Year

The 2010 Legislature approved a State General Fund budget of \$9,008,923 for the Kansas State Historical Society in FY 2011. No adjustments have been made to that amount.

CHANGE FROM APPROVED BUDGET					
	Approved 2010 Legislature	Agency Estimate FY 2011	Agency Change from Approved	Governor Rec. FY 2011	Governor Change from Approved
State General Fund	\$ 5,367,173	\$ 5,244,732	\$ (122,441)	\$ 5,244,732	\$ (122,441)
All Other Funds	3,641,750	3,310,213	(331,537)	3,310,213	(331,537)
TOTAL	<u>\$ 9,008,923</u>	<u>\$ 8,554,945</u>	<u>\$ (453,978)</u>	<u>\$ 8,554,945</u>	<u>\$ (453,978)</u>
FTE Positions	134.0	134.0	0.0	134.0	0.0

The **agency** requests revised FY 2011 operating expenditures totaling \$8,554,945, a decrease of \$453,978, or 5.0 percent, below the amount approved by the 2010 Legislature. The decrease is mainly attributable to the agency's reassessment and reduction of fee funds assigned to the different divisions. Requested State General Fund expenditures total \$5,244,732, a decrease of \$122,441, or 2.3 percent, below the approved amount. The request includes 134.0 FTE positions. The agency requests \$38,000, all from the State General Fund, in supplemental capital improvement funding, for the emergency repairs to the Fort Hays Visitor Center.

The **Governor** concurs with the agency's revised operating estimate but does not recommend the \$38,000 supplemental capital improvement funds.

B. FY 2012 – Budget Year

FY 2012 OPERATING BUDGET SUMMARY			
	Agency Request	Governor's Recommendation	Difference
Total Request/Recommendation	\$ 8,849,855	\$ 8,682,246	\$ (167,609)
FTE Positions	134.0	117.0	(17.0)
Change from FY 2011:			
<i>Dollar Change:</i>			
State General Fund	\$ 364,507	\$ 26,898	
All Other Funds	(69,597)	100,403	
TOTAL	\$ 294,910	\$ 127,301	
<i>Percent Change:</i>			
State General Fund	6.9%	0.5%	
All Other Funds	(2.1)	3.0	
TOTAL	3.4%	1.5%	
Change in FTE Positions	0.0	(17.0)	

The **agency** requests FY 2012 operating expenditures of \$8,849,855, an increase of \$294,910, or 3.4 percent, above the revised FY 2011 estimate. The request includes State General Fund expenditures of \$5,609,239, an increase of \$364,507, or 6.9 percent, above the revised FY 2011 estimate. The increase is attributable to increases in group health hospitalization benefit costs, computer expenses, and enhancements. The increase in State General Fund expenditures is due to the requested replacement of decreased fee fund expenditures compared to FY 2011 funding sources.

The request includes an operating enhancement of \$264,102, all from the State General Fund. The enhancement includes reclassifying and funding 2.0 existing FTE positions. Absent the enhancement, the agency request totals \$8,585,753, a decrease of \$30,808, or 0.4 percent, below the revised FY 2011 estimate. Absent the enhancement, the State General Fund request is \$5,345,137, a decrease of \$100,405, or 1.9 percent, below the revised FY 2011 estimate.

The **Governor** recommends FY 2012 operating expenditures of \$8,682,246, a decrease of \$167,609, or 1.9 percent, below the agency's request. It is a State General Fund decrease of \$337,609, or 6.0 percent, below the agency's request.

The recommendation is an increase of \$127,301, or 1.5 percent, above the FY 2011 revised estimate. The increase is attributable to the Governor's acceptance of the agency's reduced resources and is offset by the Governor's recommendation of \$200,000, all from the State General Fund, as pass through money to the 501(c)(3) Kansas Arts Council. The Governor also recommends a decrease in 17.0 FTE positions.

Transfer of Kansas Arts Commission to the Kansas State Historical Society as a 501(c)(3) Kansas Arts Council

The **Governor** recommends an Executive Reorganization Order for FY 2012, including a transfer of the duties and responsibilities of the Kansas Arts Commission, currently a separate state agency, to become a 501(c)(3) not-for-profit called the Kansas Arts Council. State funding for the agency will be provided through the Kansas State Historical Society. All 8.0 FTE positions for the Kansas Arts Commission are eliminated.

Overview of the Kansas Arts Commission. The Kansas Arts Commission was created by the Legislature in 1955 to support and sustain the development of the arts and cultural resources in Kansas. The agency is governed by a commission of twelve members appointed by the Governor and led by an Executive Director who carries out the day-to-day functions of the agency.

The Kansas Arts Commission serves as the vehicle for state funding for the arts and the mechanism through which federal funds for Kansas artists and arts programs are channeled. Each year, the agency receives hundreds of applications for grant money. Each grant application is reviewed by the staff to ensure they meet eligibility criteria. The grant applications are then judged and scored by citizen panels who make recommendations for funding to the Commission. The Commission makes the final decisions in awarding federal and state grant funding.

Budget Adjustments Related to the Transfer. The Governor's FY 2012 recommendation adds \$200,000, all from the State General Fund, to the Kansas State Historical Society to serve as pass through funding for the Kansas Arts Council. Changes from the amount requested by the Kansas Arts Commission and the amount recommended in the budget of the Kansas State Historical Society include the following:

- **Enhancement request.** The Kansas Arts Commission had requested a total of \$300,000, all from the State General Fund, to replace grant funding that was eliminated by the 2010 Legislature. The Governor does not recommend the enhancement.
- **Reduced Resources.** The agency's submitted budget for FY 2012 included reduced resources of \$40,771, all from the State General Fund, for grant programs. The Governor recommends the Kansas Arts Commission reorganize as a 501 (c)(3) and therefore the reduced resources are not part of the Governors recommendation.

Staff Reorganization. The Governor recommends eliminating all 8.0 FTE positions.

The table below reflects the difference between the amounts requested by the Kansas Arts Commission for FY 2012 and the amounts recommended in the budget of the Kansas State Historical Society for the Kansas Arts Council.

Transfer Summary

	Agency Request FY 2012	Gov. Rec. FY 2012	Gov. Rec. Difference From Agency Request	
			Amount	Percent
Salaries and Wages	\$ 463,877	\$ 0	\$ (463,877)	(100.0) %
Contractual Services	136,011	0	(136,011)	(100.0)
Commodities	7,660	0	(7,660)	(100.0)
Capital Outlay	3,944	0	(3,944)	(100.0)
Subtotal-Operating	\$ 611,492	\$ 0	\$ (611,492)	(100.0) %
Aid to Local Units	42,617	0	(42,617)	(100.0)
Other Assistance	1,251,903	200,000	(1,051,903)	(100.0)
TOTAL	\$ 1,906,012	\$ 200,000	\$ (1,706,012)	(89.5) %
Financing:				
State General Fund	\$ 1,115,413	\$ 200,000	\$ (915,413)	(82.1) %
Federal Funds	755,599	0	(755,599)	(100.0)
All Other Funds	35,000	0	(35,000)	(100.0)
TOTAL	\$ 1,906,012	\$ 200,000	\$ (1,706,012)	(89.5) %
FTE Positions	8.0	0.0	(8.0)	(100.0) %

FY 2012 ENHANCEMENTS						
Enhancements	Agency Request			Governor's Recommendation		
	SGF	All Funds	FTE	SGF	All Funds	FTE
Operating:						
Kansas Enterprise Electronic Preservation System (KEEP)	\$ 264,102	\$ 264,102	0.0	\$ 0	\$ 0	0.0
Capital Improvements:						
Computer Server Equipment Room Air Conditioning	44,800	44,800	0.0	0	0	0.0
KSHS Lighting Replacement	50,000	50,000	0.0	0	0	0.0
Grinder Place ADA Exterior Restroom	35,700	35,700	0.0	0	0	0.0
TOTAL	\$ 394,602	\$ 394,602	0.0	\$ 0	\$ 0	0.0

Enhancements Detail

The **agency** requests \$264,102 for the Archives Division's development of a trusted digital repository called Kansas Enterprise Electronic Preservation System (KEEP) in order to preserve and provide access to Kansas government records with long-term (10+ years) retentions. According to the agency, the purpose of this enhancement is to provide transitional funding for three fiscal years while the KEEP system moves beyond the prototype to a production system that is fee funded. The enhancement includes reclassifying and funding 2.0 existing FTE positions.

The **Governor** does not recommend this enhancement.

The **agency** requests \$130,500 for funding three capital improvements projects.

- \$44,800 for the Kansas State Historical Society computer server equipment room air conditioning. The loss of air conditioning due to equipment failures has put the agency's computer servers at risk to overheat;
- \$50,000 for lighting replacement. Facility lighting fixtures that have been catching on fire will be replaced with low UV, energy efficient indirect lighting; and
- \$35,700 for Grinter Place ADA exterior restroom remodel. Existing restrooms for the site do not comply with the American Disability Act.

The **Governor** does not recommend funding these capital improvement projects.

FY 2012 REDUCED RESOURCES						
Item	Agency Recommendation			Governor's Recommendation		
	SGF	All Funds	FTE	SGF	All Funds	FTE
Humanities Council and Heritage Center 5% reduction	\$ (4,599)	\$ (4,599)	0.0	\$ 0	\$ 0	0.0
Reduce Security Guard Services	(24,851)	(24,851)	0.0	0	0	0.0
Close Kansas State Historical Society on Sunday, Monday and Tuesday	(67,194)	(67,194)	0.0	0	0	0.0
Marketing Reduction	(10,000)	(10,000)	0.0	0	0	0.0
Replace Administration Desk Visitor Service Representatives	(23,603)	(23,603)	0.0	0	0	0.0
Reduce Library Assistant II (retirement)	(47,619)	(47,619)	0.0	0	0	0.0
Change Library Assistant I to Fee Fund	(13,447)	(13,447)	0.0	0	0	0.0
Change Grinder Place to Season Hours	(22,159)	(22,159)	0.0	0	0	0.0
Change Kaw Mission Hours to Seasonal	(22,159)	(22,159)	0.0	0	0	0.0
Reduce Maintenance and Repair Technician	(37,876)	(37,876)	0.0	0	0	0.0
Shrinkage				(273,507)	(103,507)	0.0
TOTAL	<u>\$ (273,507)</u>	<u>\$ (273,507)</u>	<u>0.0</u>	<u>\$ (273,507)</u>	<u>\$ (103,507)</u>	<u>0.0</u>

FY 2012 Reduced Resources

The agency has submitted a reduced resources budget of \$273,507 under the 5.0 percent reduced resource allocation assigned to the Kansas State Historical Society. The reduction would also be applied to the pass-through funds of the Kansas Humanities Council and the Kansas Heritage Center.

According to the agency, since nearly 72.0 percent of the agency's State General Fund budget is salaries, this reduction would affect personnel. Approval of this funding level would result in the Historical Society closing its doors to the public three days a week. The agency would not fill positions that are vacated by retirement and move a portion of personnel costs to fee funds. Two sites would change to seasonal operations, resulting in the reduction of two full-time positions to two half-time positions.

The **Governor** accepts a reduced resource totaling \$273,507, all from State General Fund. The Governor also recommends offsetting \$170,000 of the State General Fund reduction with agency fee funds including \$100,000 from the Historic Properties Fee Fund and \$70,000 from the General Fee Fund.

Governor's Recommended Salary and Wage Adjustments

State Employee Pay Increases. The Governor's FY 2012 recommendation does not include a base salary adjustment for state employees.

Classified Employee Pay Plan. During the 2007 interim, the State Employee Compensation Oversight Commission was charged with the development of a new pay plan for classified employees for the Governor, Chief Justice of the Supreme Court and 2008 Legislature to consider. The Commission endorsed the recommendation of the Hay Group that five separate pay plans be created for state employees in the classified service, with different opportunities for pay increases to acknowledge the different types of work performed. The five pay plans recommended include: a management pay plan for those involved in managerial functions (increases based on performance); a professional individual contributor for employees requiring knowledge of principles and theories of a professional discipline that is normally obtained through a college curriculum (increases within broad bands to reflect different levels of work and performance against established standards); a protective service pay plan for uniformed officers and all other positions that meet the definition of police or law enforcement officer (increases based on achievement of milestone and certification events as well as time on the job and performance); a basic vocational pay plan for employees that perform routine, structured, work where performance can be measured on a pass/fail basis (increases based on the traditional step movement approach, based on time on the job); and a general classified pay plan for those employees who do not fall within the parameters of the other four plans (the pay ranges will have steps below the market rate and an open range above the market rate).

The time frame to fully implement the recommended plan was five years. Under the plan, the classified employees were divided into three groups to first address those with the greatest salary disparity to the market rate. The 2008 Legislature appropriated \$8.5 million from the State General Fund for FY 2009, the first year of the program. The 2008 Legislature also appropriated \$8.5 million from the State General Fund for each year from FY 2010 through FY 2013 to the State Finance Council. The Governor does not recommend continued funding for the plan, and recommends that the \$8.5 million which had been previously appropriated for both FY 2012 and FY 2013 be lapsed.

Longevity Bonus Payments. For FY 2012, the Governor recommends the continuation of the current "temporary" longevity bonus payment program. The recommendation provides for a bonus of \$50 per year of service, with a 10-year minimum (\$500) and a 25-year maximum (\$1,250). The current statutory provisions of the longevity bonus payment are \$40 per year of service, with a 10-year minimum (\$400), and a 25-year maximum (\$1,000). Classified employees hired after June 15, 2008 are not eligible for longevity bonus payments. The estimated cost for the recommended FY 2012 payments is \$12.6 million, including \$5.3 million from the State General Fund. **For this agency**, longevity payments total \$41,199, including \$29,540 from the State General Fund.

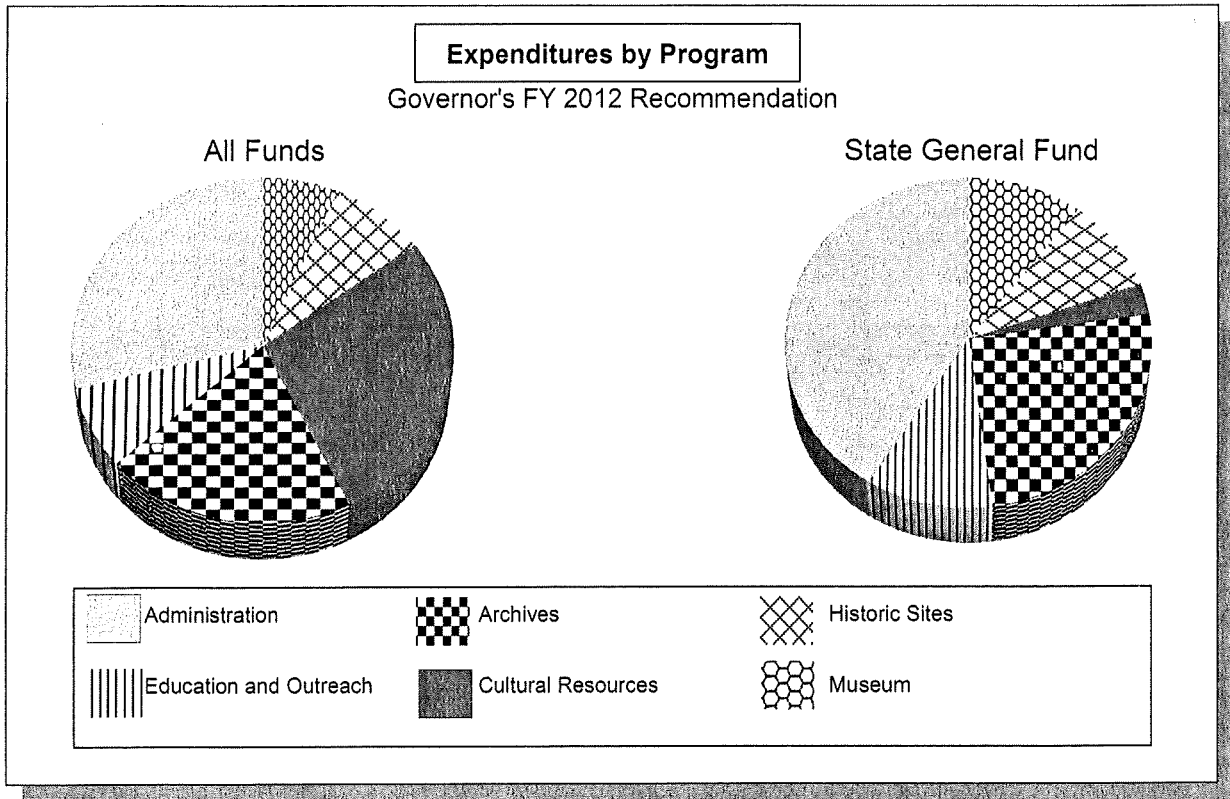
Kansas Public Employees Retirement System (KPERs) Rate Adjustments. A total of \$37.1 million, including \$32.3 million from the State General Fund, is included in the Governor's FY 2012 recommendations for KPERs adjustments. The FY 2012 rate for KPERs regular and school members will increase by 0.6 percent, from 8.17 percent to 8.77 percent, when compared to FY 2011. This increase is attributable to the annual statutory increase for financing the unfunded liability of the KPERs fund.

Funding Sources

Funding Source	Agency Req. Percent of Total FY 2012	Gov. Rec. Percent of Total FY 2012
State General Fund	56.7%	60.7%
Heritage Trust Fund	10.5	0.0
All Other Funds	32.8	39.3
TOTAL	100.0%	100.0%

Note: Percentages may not add due to rounding.

PROGRAM DETAIL



Program	Gov. Rec. All Funds FY 2012	Percent of Total	Gov. Rec. SGF FY 2012	Percent of Total
Administration	\$ 2,514,681	29.0%	\$ 2,168,352	41.1%
Education and Outreach	665,129	7.7	574,024	10.9
Archives	1,792,413	20.6	1,335,039	25.3
Cultural Resources	2,416,370	27.8	160,726	3.0
Historic Sites	728,670	8.4	491,406	9.3
Museum	564,983	6.5	542,083	10.3
TOTAL	\$ 8,682,246	100.0%	\$ 5,271,630	100.0%

FTE POSITIONS BY PROGRAM – FY 2010- FY 2012

Program	Actual FY 2010	Agency Est. FY 2011	Gov. Rec. FY 2011	Agency Req. FY 2012	Gov. Rec. FY 2012
Administration	26.8	26.8	26.8	26.8	24.8
Education Outreach	13.5	13.5	13.5	13.5	12.5
Archives	39.5	39.5	39.5	39.5	35.5
Cultural Resources	19.2	19.2	19.3	19.2	15.3
Historic Properties	17.5	17.5	17.5	17.5	14.5
Museum	17.5	17.5	17.5	17.5	14.5
TOTAL	134.0	134.0	134.0	134.0	117.0

A. Administration

The goal of the Administration Division is to create a working environment that allows the State Historical Society staff to function efficiently and creatively, to provide supportive services to all State Historical Society programs, and to provide for the environmental and physical security of the staff, patrons, and collections housed in the Kansas History Center. These services include information technology, human resources and fiscal operations, maintenance and custodial services, security, agency planning, administration, and communications. The aid to local units of government funding is allocated for the Kansas Humanities Council and the Heritage Center in Dodge City. The expenditures for the entire agency from admission fees are reflected in the administration budget. This program includes the sub-programs of Information Technology, Marketing, and Facilities Management.

ADMINISTRATION SUMMARY OF EXPENDITURES FY 2010-FY 2012					
Item	Actual FY 2010	Agency Est. FY 2011	Gov. Rec. FY 2011	Agency Req. FY 2012	Gov. Rec. FY 2012
Expenditures:					
Salaries and Wages	\$ 1,193,372	\$ 1,231,564	\$ 1,231,564	\$ 1,257,307	\$ 1,214,520
Contractual Services	685,254	783,831	783,831	798,953	798,953
Commodities	71,398	164,169	164,169	163,819	163,819
Capital Outlay	85,721	53,904	53,904	50,000	50,000
Subtotal - Operating	\$ 2,035,745	\$ 2,233,468	\$ 2,233,468	\$ 2,270,079	\$ 2,227,292
Aid to Local Units	24,226	23,402	23,402	23,402	22,232
Other Assistance	68,273	68,586	68,586	68,586	235,157
TOTAL	<u>\$ 2,128,244</u>	<u>\$ 2,325,456</u>	<u>\$ 2,325,456</u>	<u>\$ 2,362,067</u>	<u>\$ 2,514,681</u>
Financing:					
State General Fund	\$ 2,129,474	\$ 1,936,383	\$ 1,936,383	\$ 2,015,738	\$ 2,168,352
All Other Funds	(1,230)	389,073	389,073	346,329	346,329
TOTAL	<u>\$ 2,128,244</u>	<u>\$ 2,325,456</u>	<u>\$ 2,325,456</u>	<u>\$ 2,362,067</u>	<u>\$ 2,514,681</u>
FTE Positions	26.8	26.8	26.8	26.8	24.8
Non-FTE Uncl. Perm. Pos.	1.0	0.0	0.0	0.0	0.0
TOTAL	<u>27.8</u>	<u>26.8</u>	<u>26.8</u>	<u>26.8</u>	<u>24.8</u>

The **agency** requests FY 2012 expenditures of \$2,362,067 for its Administration Division, an increase of \$36,611, or 1.6 percent, above the FY 2011 revised estimate. The request includes \$2,015,738 from the State General Fund, an increase of \$79,355, or 4.1 percent, above the FY 2011 revised request. The request includes 26.8 FTE positions.

- **Salaries and Wages.** The request includes \$1,257,307, an increase of \$25,743, or 2.1 percent, above the FY 2011 revised request. The increase is attributable to an increase in fringe benefits.
- **Contractual Services.** The request includes \$798,953, an increase of \$15,122, or 1.9 percent, above the FY 2011 revised request. The increase is attributable to increases in costs for the Division of Information Systems and Communications (DISC) costs.
- **Commodities.** The request includes \$163,819, a decrease of \$350, or 0.2 percent, below the FY 2011 revised request. The decrease is attributable to a decrease in buildings and grounds materials and equipment parts.
- **Capital Outlay.** The request includes \$50,000, a decrease of \$3,904, or 7.2 percent, below the FY 2011 revised request.
- **Aid to Local Units.** The request includes \$23,402, no change from the FY 2011 revised estimate.
- **Other Assistance.** The request includes \$68,586, no change from the FY 2011 revised estimate.

The **Governor** recommends FY 2012 expenditures of \$2,514,681 for the Administration Division, an increase of \$152,614, or 6.0 percent, above the agency's request, all from the State General Fund. The increase is attributable to the Governor's acceptance of the agency's reduced resources which is offset by \$200,000, all from the State General Fund, in pass through funding to the recommended 501(c)(3) Kansas Arts Council. The Governor also recommends a decrease in 2.0 FTE positions.

B. Education and Outreach

The Education and Outreach Division coordinates the educational programs of the State Historical Society. The Division not only creates its own programming, but also coordinates with all other divisions to disseminate information throughout Kansas. The Division consists of publications, public relations, third-party user programs, field services, education, cultural heritage, the State Capitol tour center, and visitor and volunteer services. The Division's goal is to facilitate public understanding and appreciation of Kansas history and culture so that individuals and communities recognize and understand their heritage and how it relates to their lives. The Education and Outreach Division is working with the State Department of Education on following the adoption standards to develop curriculum materials on Kansas history for Kansas school children.

EDUCATION AND OUTREACH SUMMARY OF EXPENDITURES FY 2010-FY 2012					
Item	Actual FY 2010	Agency Est. FY 2011	Gov. Rec. FY 2011	Agency Req. FY 2012	Gov. Rec. FY 2012
Expenditures:					
Salaries and Wages	\$ 616,766	\$ 639,586	\$ 639,586	\$ 651,593	\$ 635,593
Contractual Services	8,248	33,200	33,200	21,650	21,650
Commodities	6,417	8,649	8,649	7,886	7,886
Capital Outlay	1,115	0	0	0	0
Subtotal - Operating	\$ 632,546	\$ 681,435	\$ 681,435	\$ 681,129	\$ 665,129
Aid to Local Units	0	0	0	0	0
Other Assistance	0	0	0	0	0
TOTAL	<u>\$ 632,546</u>	<u>\$ 681,435</u>	<u>\$ 681,435</u>	<u>\$ 681,129</u>	<u>\$ 665,129</u>
Financing:					
State General Fund	\$ 555,722	\$ 578,678	\$ 578,678	\$ 590,024	\$ 574,024
All Other Funds	76,824	102,757	102,757	91,105	91,105
TOTAL	<u>\$ 632,546</u>	<u>\$ 681,435</u>	<u>\$ 681,435</u>	<u>\$ 681,129</u>	<u>\$ 665,129</u>
FTE Positions	13.5	13.5	13.5	13.5	12.5
Non-FTE Uncl. Perm. Pos.	0.0	0.0	0.0	0.0	0.0
TOTAL	<u>13.5</u>	<u>13.5</u>	<u>13.5</u>	<u>13.5</u>	<u>12.5</u>

The **agency** requests FY 2012 expenditures for its Education and Outreach Division of \$681,129, a decrease of \$306, or less than 0.1 percent, below the revised FY 2011 estimate. The request includes \$590,024 from the State General Fund. This is an increase of \$11,346, or 2.0 percent, above the revised for FY 2011 estimate.

- **Salaries and Wages.** The request includes \$651,593, an increase of \$12,007, or 1.9 percent, above the revised FY 2011 estimate. The increase is attributable to increases to fringe benefit costs.
- **Contractual Services.** The request includes \$21,650, a decrease of \$11,550, or 34.8 percent, below the revised FY 2011 estimate. The decrease is attributable to a decrease in travel and other fees.
- **Commodities.** The request includes \$7,886, a decrease of \$763, or 8.8 percent, below the revised FY 2011 estimate. The decrease is attributable to a decrease in scientific supplies.
- **Capital Outlay.** No funds are requested for capital outlay.

The **Governor** recommends FY 2012 expenditures of \$665,129 for the Archives Division, a decrease of \$16,000, or 2.7 percent, below the agency's request, all from the State General Fund. The decrease is attributable to the Governor's acceptance of the agency's reduced resources. The Governor also recommends a decrease in 1.0 FTE position.

C. Archives

The Archives Division deals with historical materials that have been primarily paper-based, although increasing numbers of materials are in non-paper formats, such as microfilm, videotape, and digital media. The main functions of the Division are: 1) acquiring materials to increase the breadth and depth of historical resources available to the public; 2) preserving the intellectual content of collection holdings either in their original format or in a format with greater stability and requiring less physical storage space; 3) arranging, describing, and cataloging materials, and making the holdings and information about them as widely available as possible; 4) providing access to collections by digitizing selected items and making them available to internet users via Kansas Memory; 5) providing access to primary historical sources needed by teachers and students to meet Kansas curricular standards; 6) facilitating the effective management and preservation of state government records by providing a variety of records management services to state agencies as required by the Government Records Preservation Act and the Public Records Act, including establishing retention and disposition schedules for all records, including electronic records, operating the State Records Center to assist agencies in managing their non-current paper records, and developing electronic records management and preservation initiatives; and 7) providing technical assistance to state agencies, local government officials, and others also involved in preserving historical documents.

ARCHIVES SUMMARY OF EXPENDITURES FY 2010-FY 2012					
Item	Actual FY 2010	Agency Est. FY 2011	Gov. Rec. FY 2011	Agency Req. FY 2012	Gov. Rec. FY 2012
Expenditures:					
Salaries and Wages	\$ 1,426,487	\$ 1,587,197	\$ 1,587,197	\$ 1,655,970	\$ 1,513,476
Contractual Services	325,865	242,270	242,270	235,470	235,470
Commodities	44,501	43,517	43,517	43,467	43,467
Capital Outlay	21,928	0	0	141,608	0
Subtotal - Operating	\$ 1,818,781	\$ 1,872,984	\$ 1,872,984	\$ 2,076,515	\$ 1,792,413
Aid to Local Units	0	0	0	0	0
Other Assistance	0	0	0	0	0
TOTAL	<u>\$ 1,818,781</u>	<u>\$ 1,872,984</u>	<u>\$ 1,872,984</u>	<u>\$ 2,076,515</u>	<u>\$ 1,792,413</u>
Financing:					
State General Fund	\$ 1,305,282	\$ 1,398,040	\$ 1,398,040	\$ 1,619,141	\$ 1,335,039
All Other Funds	513,499	474,944	474,944	457,374	457,374
TOTAL	<u>\$ 1,818,781</u>	<u>\$ 1,872,984</u>	<u>\$ 1,872,984</u>	<u>\$ 2,076,515</u>	<u>\$ 1,792,413</u>
FTE Positions	39.5	39.5	39.5	39.5	35.5
Non-FTE Uncl. Perm. Pos.	0.0	0.0	0.0	0.0	0.0
TOTAL	<u>39.5</u>	<u>39.5</u>	<u>39.5</u>	<u>39.5</u>	<u>35.5</u>

The **agency** requests FY 2012 expenditures for its Archives Division of \$2,076,515, an increase of \$203,531, or 10.9 percent, above the revised FY 2011 estimate. The increase includes \$1,619,141, from the State General Fund, an increase of \$221,101, or 15.8 percent, above the revised FY 2011 estimate. The increase is mainly attributable to an enhancement request for the Kansas Enterprise Electronic Preservation (KEEP) system.

The agency reports that efforts to create a trusted digital repository known as KEEP, for all three branches of state government are underway. Vendor negotiations were completed in the latter part of FY 2010 and contracts were signed with three vendors. The agency indicates it was able to use the foundation of funds provided by the Legislature to raise enough additional funds to create a prototype trusted digital repository. The agency has submitted an enhancement request to provide transitional funding for staff, ongoing costs such as licensing, and equipment for three years to move the KEEP trusted digital repository from the prototype stage to a production stage that is self supporting (fee based).

- **Salaries and Wages.** The request includes \$1,655,970, an increase of \$68,773, or 4.3 percent, above the revised FY 2011 estimate. The increase is attributable to the increased costs of fringe benefits and the enhancement request.
- **Contractual Services.** The request includes \$235,470, a decrease of \$6,800, or 2.8 percent, below the revised FY 2011 estimate. The decrease is attributable to decreases in printing, mileage, and natural gas costs.
- **Commodities.** The request includes \$43,467, a decrease of \$50, or less than 0.1 percent, below the revised FY 2011 estimate. The decrease is attributable to decrease in fuel and office supplies.
- **Capital Outlay.** The request includes \$141,608, an increase of \$141,608, or 100 percent, from the revised FY 2011 estimate. The increase is attributable to the purchase of computer equipment.

The **Governor** recommends FY 2012 expenditures of \$1,792,413, all from the State General Fund, for the Archives Division, a decrease of \$284,102, or 17.5 percent, below the agency's request. The decrease is attributable to the Governor's acceptance of the agency's reduced resources and not recommending the enhancement for the transitional funding for the KEEP database system. The Governor also recommends a decrease in 4.0 FTE positions.

D. Cultural Resources

The goal of the Cultural Resources Division is to preserve the state's archeological, architectural, and historic resources by identifying, documenting, interpreting, and protecting those resources, and by fostering the public's stewardship of the State's rich cultural heritage through technical assistance, grants-in-aid, and educational and outreach opportunities. This goal guides the State Historical Society's Archeology Office and the Heritage Trust Fund program. The Division carries out program activities that include research, collections management, professional services to the public, and statutory assignments. Statutory assignments include compliance with the Kansas Unmarked Burial Sites Preservation Act (UBS), the Native American Graves Protection and Repatriation Act (NAGPRA), and monitoring of archeological work on non-federal public lands in Kansas as required by the Kansas Antiquities Commission Act. The Heritage Trust Fund program, which provides state grants for the preservation of properties listed on the National Register of Historic Places and the Register of Historic Kansas Places, was created by the enactment of the Heritage Trust Fund Law in 1990. The program is administered by the State Historic Preservation Office (SHPO). The State Historical Society is authorized to award grants from the Heritage Trust Fund to property owners for the preservation of historic resources and also to utilize the proceeds to administer the program. The Historic Sites Board of Review chooses projects to fund based upon criteria including the level of historical significance, the condition of the property, urgency of work, level of endangerment, applicants' administrative ability, benefit to the community and state, community support, and financial need.

**CULTURAL RESOURCES
SUMMARY OF EXPENDITURES FY 2010-FY 2012**

Item	Actual FY 2010	Agency Est. FY 2011	Gov. Rec. FY 2011	Agency Req. FY 2012	Gov. Rec. FY 2012
Expenditures:					
Salaries and Wages	\$ 935,124	\$ 1,139,893	\$ 1,139,893	\$ 1,165,900	\$ 1,164,779
Contractual Services	217,574	242,197	242,197	237,205	237,205
Commodities	5,034	5,375	5,375	3,975	3,975
Capital Outlay	1,216	8,100	8,100	4,100	4,100
Subtotal - Operating	\$ 1,158,948	\$ 1,395,565	\$ 1,395,565	\$ 1,411,180	\$ 1,410,059
Aid to Local Units	114,546	0	0	106,311	106,311
Other Assistance	3,856,793	1,000,000	1,000,000	900,000	900,000
TOTAL	<u>\$ 5,130,287</u>	<u>\$ 2,395,565</u>	<u>\$ 2,395,565</u>	<u>\$ 2,417,491</u>	<u>\$ 2,416,370</u>
Financing:					
State General Fund	\$ 225,770	\$ 159,951	\$ 159,951	\$ 161,847	\$ 160,726
All Other Funds	4,904,517	2,235,614	2,235,614	2,255,644	2,255,644
TOTAL	<u>\$ 5,130,287</u>	<u>\$ 2,395,565</u>	<u>\$ 2,395,565</u>	<u>\$ 2,417,491</u>	<u>\$ 2,416,370</u>
FTE Positions	19.3	19.3	19.3	19.3	15.3
Non-FTE Uncl. Perm. Pos.	3.5	3.5	3.5	3.5	3.5
TOTAL	<u>22.8</u>	<u>22.8</u>	<u>22.8</u>	<u>22.8</u>	<u>18.8</u>

The **agency** requests FY 2012 expenditures for its Cultural Resources Division of \$2,417,491, an increase of \$21,926, or 0.9 percent, above the revised FY 2011 estimate. The increase is attributable to increased costs in fringe benefits.

The **Governor** recommends FY 2012 expenditures of \$2,416,370 for the Cultural Resources Division, a decrease of \$1,121, or 0.7 percent, below the agency's request, all from the State General Fund. The decrease is attributable to the Governor's acceptance of the agency's reduced resources. The Governor also recommends a decrease in 4.0 FTE positions.

E. Historic Properties

The State Historic Properties Division provides school children and families with historical, cultural, and recreational experiences through the preservation, operation, interpretation, and promotion of the 17 historic sites owned by the state of Kansas. Sites staff has and will continue to evolve rapidly to meet changing audience needs and expectations, as well as the change in duties related to professional historic preservation standards.

HISTORIC PROPERTIES SUMMARY OF EXPENDITURES FY 2010-FY 2012					
Item	Actual FY 2010	Agency Est. FY 2011	Gov. Rec. FY 2011	Agency Req. FY 2012	Gov. Rec. FY 2012
Expenditures:					
Salaries and Wages	\$ 598,051	\$ 590,070	\$ 590,070	\$ 603,923	\$ 584,923
Contractual Services	121,847	131,000	131,000	131,000	131,000
Commodities	5,239	11,147	11,147	11,147	11,147
Capital Outlay	847	1,600	1,600	1,600	1,600
Subtotal - Operating	\$ 725,984	\$ 733,817	\$ 733,817	\$ 747,670	\$ 728,670
Aid to Local Units		0	0	0	0
Other Assistance	0	0	0	0	0
TOTAL	\$ 725,984	\$ 733,817	\$ 733,817	\$ 747,670	\$ 728,670
Financing:					
State General Fund	\$ 672,008	\$ 648,892	\$ 648,892	\$ 680,406	\$ 491,406
All Other Funds	53,976	84,925	84,925	67,264	237,264
TOTAL	\$ 725,984	\$ 733,817	\$ 733,817	\$ 747,670	\$ 728,670
FTE Positions	17.5	17.5	17.5	17.5	14.5
Non-FTE Uncl. Perm. Pos.	0.0	0.0	0.0	0.0	0.0
TOTAL	17.5	17.5	17.5	17.5	14.5

The **agency** requests FY 2012 expenditures for its Historic Sites Division of \$747,670, an increase of \$13,853, or 1.9 percent, above the FY 2011 estimate. This request includes \$680,406, from the State General Fund, an increase of \$31,514, or 4.9 percent, above the revised FY 2011 estimate. The increase is attributable to increased costs for fringe benefits.

The **Governor** recommends FY 2012 expenditures of \$728,670 for the Historic Sites Division, a decrease of \$19,000, or 2.5 percent, below the agency's FY 2012 request. Recommended State General Fund expenditures are \$491,406, a decrease of \$189,000, or 27.8 percent, below the agency's request. The decrease is attributable to the Governor's acceptance of the agency's reduced resources and an offset of State General Fund expenditures with fee expenditures. The Governor also recommends a decrease of 3.0 FTE positions.

F. Museum

The Museum is responsible for the collection, preservation, and interpretation of three-dimensional objects related to Kansas history. Research is performed in the museum collections and in other historical resources to establish a body of information for the interpretation of Kansas history through the study and use of objects. In addition to specific interpretative programs developed and operated by the museum, the staff members also answer informational requests by the public and offer technical assistance and service to other cultural agencies and the general public. According to the agency, exhibits must look fresh and new to attract repeat visitors.

<p style="text-align: center;">MUSEUM SUMMARY OF EXPENDITURES FY 2010-FY 2012</p>					
Item	Actual FY 2010	Agency Est. FY 2011	Gov. Rec. FY 2011	Agency Req. FY 2012	Gov. Rec. FY 2012
Expenditures:					
Salaries and Wages	\$ 505,302	\$ 501,789	\$ 501,789	\$ 521,096	\$ 521,096
Contractual Services	10,723	20,999	20,999	20,987	20,987
Commodities	6,336	22,900	22,900	22,900	22,900
Capital Outlay	0	0	0	0	0
Subtotal - Operating	\$ 522,361	\$ 545,688	\$ 545,688	\$ 564,983	\$ 564,983
Aid to Local Units	0	0	0	0	0
Other Assistance	0	0	0	0	0
TOTAL	\$ 522,361	\$ 545,688	\$ 545,688	\$ 564,983	\$ 564,983
Financing:					
State General Fund	\$ 496,783	\$ 522,788	\$ 522,788	\$ 542,083	\$ 542,083
All Other Funds	25,578	22,900	22,900	22,900	22,900
TOTAL	\$ 522,361	\$ 545,688	\$ 545,688	\$ 564,983	\$ 564,983
FTE Positions	17.5	17.5	17.5	17.5	14.5
Non-FTE Uncl. Perm. Pos.	0.0	0.0	0.0	0.0	0.0
TOTAL	17.5	17.5	17.5	17.5	14.5

The **agency** requests expenditures for the Museum Division of \$564,983 in FY 2012, an increase of \$19,295, or 3.5 percent, above the revised FY 2011 estimate. This includes \$542,083, from the State General Fund, an increase of \$19,295, or 3.7 percent, above the revised FY 2011 estimate. This increase is attributable to increased costs in fringe benefits.

The **Governor** concurs with the agency's request in expenditures for the Museum Division in FY 2012, but recommends a decrease in 3.0 FTE positions.

CAPITAL IMPROVEMENTS

CAPITAL IMPROVEMENTS				
Project	Agency Est. FY 2011	Gov. Rec. FY 2011	Agency Req. FY 2012	Gov. Rec. FY 2012
Fort Hays (supplemental)	38,000	\$ 0	\$ 0	\$ 0
Emergency Repairs	125,447	125,447	0	0
Goodnow House	76,294	76,294	0	0
Pawnee Rock	70,788	70,788	0	0
Cottonwood Ranch	21,000	21,000	0	0
Emergency Repairs	0	0	125,000	125,000
Computer Room Air Conditioning	0	0	44,800	0
Lighting Replacement	0	0	50,000	0
Grinter Place	0	0	35,700	0
John Brown Museum	0	0	96,900	96,900
Shawnee Indian Mission	0	0	75,000	75,000
TOTAL	<u>\$ 331,529</u>	<u>\$ 293,529</u>	<u>\$ 427,400</u>	<u>\$ 296,900</u>
Financing:				
State General Fund	\$ 163,447	\$ 125,447	\$ 255,500	\$ 125,000
All Other Funds	<u>168,082</u>	<u>168,082</u>	<u>171,900</u>	<u>171,900</u>
TOTAL	<u>\$ 331,529</u>	<u>\$ 293,529</u>	<u>\$ 427,400</u>	<u>\$ 296,900</u>

FY 2011-Current Year. The agency requests \$331,529, including \$163,447 from the State General Fund, for capital improvements in FY 2011. The agency is requesting funding for the following projects:

- \$125,447 for emergency repair and rehabilitation of more than fifty structures under its care, all from the State General Fund.
- \$76,294 for the Goodnow House structural stabilization and interior restoration project. All funds are from federal and private sources.
- \$70,788 for the Pawnee Rock structure restoration and site rehabilitation. All funds are from federal funds.
- \$21,000 for the Cottonwood Ranch house and outbuilding repainting and site improvements. All funds are from private funds.

- The agency requests \$38,000 in supplemental funds, all from the State General Fund, for emergency repairs to the Fort Hays Visitor Center. Absent the supplemental request, \$293,082 is the approved budget for capital improvements.

The **Governor** recommends \$293,529, including \$125,447 from the State General Fund, for capital improvement projects in FY 2011, same as approved. The Governor does not recommend the \$38,000 supplemental request for emergency repairs to the Fort Hays Visitor Center.

FY 2012-Budget Year. The agency requests \$427,400, including \$255,500 from the State General Fund, for capital improvements in FY 2012. The items below detail the projects to be funded by the State General Fund:

- \$125,000 for emergency repairs to the more than fifty structures under its care;
- \$44,800 for Kansas State Historical computer server equipment room air conditioning. The loss of air conditioning due to equipment failures has put the agency's computer servers at risk to overheat;
- \$50,000 for lighting replacement. Facility lighting fixtures that have been catching on fire would be replaced with low UV, energy efficient indirect lighting; and
- \$35,700 for Grinter Place ADA exterior restroom remodel. Existing restrooms for the site do not comply with the American Disability Act.

In addition to these capital improvement projects, the following projects would be completely funded with federal or private funds:

- \$96,900 for the John Brown Museum repair or replacement of windows and doors; and
- \$75,000 for the Shawnee Indian Mission west building interior restoration and site improvement.

The **Governor** recommends \$296,900, including \$125,000 from State General Fund, for capital improvements projects in FY 2012. The funding includes \$125,000 for emergency repairs, all from the State General Fund, \$96,900 for the John Brown Museum, and \$75,000 for the Shawnee Indian Mission from federal or private funds.

PERFORMANCE MEASURES				
Measure	2010 Gov. Rec. for FY 2010	Actual FY 2010	Gov. Rec. FY 2011	Gov. Rec. FY 2012
Number of teachers trained in Kansas history curriculum	300	525	700	800
Number of visitors to the Kansas Museum of History, State Capital, and historic sites	150,000	129,048	68,000	70,000
Number of properties on National Register of Historic Places	1,200	1,203	1,250	1,300

KANSAS ARTS COMMISSION

DRAFT

Expenditure	Actual FY 2010	Agency Est. FY 2011	Gov. Rec. FY 2011	Agency Req. FY 2012	Gov. Rec. FY 2012
Operating Expenditures:					
State General Fund	\$ 1,137,624	\$ 811,290	\$ 797,980	\$ 1,115,413	\$ 0
Other Funds	1,043,470	839,474	839,474	790,599	0
TOTAL	\$ 2,181,094	\$ 1,650,764	\$ 1,637,454	\$ 1,906,012	\$ 0
Capital Improvements:					
State General Fund	\$ 0	\$ 0	\$ 0	\$ 0	\$ 0
Other Funds	0	0	0	0	0
TOTAL	\$ 0	\$ 0	\$ 0	\$ 0	\$ 0
GRAND TOTAL	\$ 2,181,094	\$ 1,650,764	\$ 1,637,454	\$ 1,906,012	\$ 0

Percentage Change:

Operating Expenditures:

State General Fund	(22.5)%	(28.7)%	(29.9)%	37.5%	(100.0)%
All Funds	(1.2)	(0.2)	(24.9)	15.5	(100.0)
FTE Positions	0.0	0.0	0.0	0.0	0.0
Non-FTE Perm. Uncl. Pos.	1.0	0.0	0.0	0.0	0.0
TOTAL	1.0	0.0	0.0	0.0	0.0

AGENCY OVERVIEW

The Kansas Arts Commission was created by the Legislature in 1955 to support and sustain the development of the arts and cultural resources in Kansas. The agency is governed by a commission of twelve members appointed by the Governor and led by an Executive Director who carries out the day-to-day functions of the agency.

The Kansas Arts Commission serves as the vehicle for state funding for the arts and the mechanism through which federal funds for Kansas artists and arts programs are channeled. Each year, the agency receives hundreds of applications for grant money. Each grant application is reviewed by the staff to ensure they meet eligibility criteria. The grant applications are then judged and scored by citizen panels who make recommendations for funding to the Commission. The Commission makes the final decisions in awarding grants of federal and state funds.

The agency has two categories of grant programs: Grants of Organizations and Grants for Artists. In addition to those grants, the agency offers professional development for artists and organizations to enhance business skills and organizational capacity.

Kansas Arts Commission Grant Programs for FY 2012:

Operational Support for Arts and Cultural Organizations. The Kansas Arts Commission provides operational support to arts and cultural organizations for programming and administrative costs. The amount of financial support awarded to eligible Operational Support applicants is based on a percentage of the organization's projected expenses budget and the amount of funds available for distribution by the Commission. In FY 2011, the minimum grant was \$1,465 and the maximum grant was \$5,286. The match requirement for Operational Support grants is 1:1.

Arts-in-Education Project Grants. Arts-in-Education (AIE) Project Grants emphasize the importance of arts in the development of Kansas children. These grants provide opportunities for children to experience the arts through hands-on involvement. For FY 2012, there are two AIE project categories: Arts Learning Grants for smaller budget and non-arts organizations; and Arts Education Leadership Grants for larger budget arts and cultural organizations. Organizations may request from \$2,000 to \$18,000 depending on the category and must match on a 1:1 basis. Arts Education Leadership grantees must complete a program evaluation to be submitted with final grant reports.

Kansas Arts on Tour Program. The Kansas Arts on Tour Program provides fee support for Kansas Arts on Tour Program Roster Artists. Organizations may request 40 percent of performance fees up to \$7,500.

Artists Grants. The Kansas Arts Commission awards grants to artists to advance their career and to work in communities. Artists in any discipline may apply to attend courses on small business development, conferences, work with a master artist, or work with local communities to make the arts more accessible to schoolchildren, seniors or other community members. Artists may request up to \$5,000 with a 4:1 (artist:state) match (in-kind match is acceptable).

Cooperative Agreements/Partnerships. This program provides contractual partnerships with art service organizations to address statewide needs identified by the Arts Commission. These could include professional development programs, touring exhibitions, or providing greater access to performances and arts events. The match must be 1:1. Components of the program vary from year to year, but for FY 2012, the only anticipated recipient of this agreement is Mid-America Arts Alliance, which provides indirect financial support to presenters of visual arts exhibits and artistic performances. The exhibit and performances usually originate from outside the state and are on regional or national tour. Mid-America Arts Alliance, located in Kansas City, supports a six-state region.

Professional Development FY 2012:

The agency anticipates at least 15 professional development workshops/seminars will be held in FY 2012 that will include the following topics:

Business Skill Development and Artists;
Strategic Planning;

Grant Writing;
Marketing and Promotion;
Community Development Through the Arts;
Arts Advocacy;
Fund Raising;
Board Development; and
Arts Education Programming.

All workshops and seminars are offered free or at a low-cost and are open to the public.

MAJOR ISSUES FROM PRIOR YEARS

The **2006 Legislature** added \$14,000 from the Economic Development Initiatives Fund (EDIF) for FY 2007 to research and publish an economic impact study of the arts industry in Kansas. The results demonstrated that the nonprofit and government arts and cultural industry has a value of \$153.5 million, supports 4,612 full-time equivalent jobs and generates over \$15.0 million in state (\$9.0 million) and local government (\$6.0 million) revenues. The study has been broadly released and is being utilized by many communities statewide.

The **2007 Legislature** added \$100,000 from the State General Fund for additional arts grants in FY 2008. Additionally, the 2007 Legislature added language for the creation of a plan for the establishment of the Celebrate Kansas Art Program in FY 2008. This plan would detail how the agency would create an arts competition for Kansas high school students.

The **2009 Legislature** enacted 2009 HB 2134 to allow the Kansas Arts Commission to design and issue distinctive "Support Kansas Arts" license plates upon payment of a royalty fee between \$25 and \$100. Proceeds will help support arts education and grant programs. In addition, the agency received \$301,700 from the National Endowment for the Arts in FY 2010, as part of the federal American Recovery and Reinvestment Act (ARRA) of 2009.

The **2010 Legislature** deleted \$93,100 all from the State General Fund, to achieve a State General Fund reduction of approximately 2.5 percent from the FY 2010 Governor's recommendation for FY 2011. The 2010 Legislature also deleted \$300,000, all from the State General Fund, for FY 2011 to reduce grant program funding to individuals and organizations. This reduced total State General Fund expenditures for grant program funding for FY 2011 to \$554,263. The FY 2010 funding for the grant program was \$892,082. In addition, a 1.0 non-FTE position associated with funding from the federal American Recovery and Reinvestment Act (ARRA) was reduced because the ARRA funding does not continue in FY 2011.

BUDGET SUMMARY AND KEY POINTS

FY 2011 – Current Year. The **agency** requests a revised FY 2011 budget of \$1,650,764, which is an increase of \$92,500, or 5.9 percent, above the amount approved by the 2010 Legislature. The increase is mainly from federal funds. The Commission has approximately \$37,024 of federal funds which were approved by the National Endowment for the Arts to carry forward and expend in FY 2011. The National Endowment for the Arts also awarded the Kansas Arts Commission a Partnership Grant of \$778,200. In addition, the Commission received a National Arts and Disabilities Center Grant funded through the National Endowment for the Arts for \$12,000. The Commission successfully raised funds from private sources to support most of the expenditures of the FY 2010 Governor's Arts Award program with some of the remaining funds in FY 2010 to be carried forward to support the event in FY 2011. The agency estimate includes 8.0 FTE positions, the same as the approved amount.

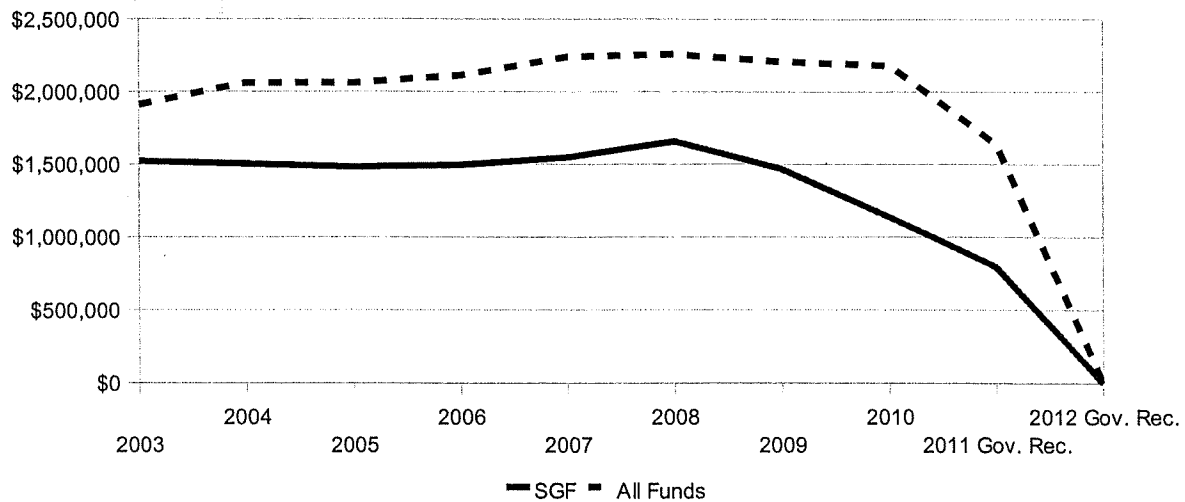
The **Governor** recommends operating expenditures of \$1,637,454 in FY 2011, including \$797,980 from the State General Fund. The recommendation includes a lapse of \$13,310, all from the State General Fund, to return salaries and wages to the FY 2011 approved level. The recommendation includes 8.0 FTE positions.

FY 2012 – Budget Year. The **agency** requests FY 2012 expenditures of \$1,906,012, an increase of \$255,248, or 15.5 percent, above the revised FY 2011 estimate. Requested State General Fund expenditures total \$1,115,413, an increase of \$304,123, or 37.5 percent, above the revised FY 2011 estimate. The request includes enhancement funding of \$300,000, all from the State General Fund. Absent the enhancement, the request is \$44,752, or 2.7 percent, below the FY 2011 estimate. The request includes 8.0 FTE positions, the same as the FY 2011 estimate.

The **Governor** recommends that the agency become a 501(c)(3) to be known as the Kansas Arts Council. In acknowledgment of the Commission's valuable role in sponsoring the arts in Kansas and to provide aid during the transition from State agency to private organization, The Governor recommends \$200,000, all from State General Fund, be passed through the Kansas State Historical Society to the newly formed Kansas Arts Council in FY 2012.

BUDGET TRENDS

OPERATING EXPENDITURES FY 2003–FY 2012



OPERATING EXPENDITURES FY 2003–FY 2012

Fiscal Year	SGF	% Change	All Funds	% Change	FTE
2003	\$ 1,522,532	(7.7)%	\$ 1,910,135	(7.8)%	8.0
2004	1,504,038	(1.2)	2,061,236	7.9	8.0
2005	1,481,857	(1.5)	2,059,135	(0.1)	8.0
2006	1,496,802	1.0	2,111,483	2.5	8.0
2007	1,548,312	3.4	2,238,484	6.0	8.0
2008	1,658,614	7.1	2,256,324	0.8	8.0
2009	1,468,764	(11.4)	2,207,983	(2.1)	8.0
2010	1,137,624	(22.5)	2,181,094	(1.2)	8.0
2011 Gov. Rec.	797,980	(29.9)	1,637,454	(24.9)	0.0
2012 Gov. Rec.	0	(100.0)	0	(100.0)	0.0
Ten-Year Change Dollars/Percent	\$ (1,522,532)	(100.0)%	(1,910,135)	(100.0)%	(8.0)

Summary of Operating Budget FY 2010-FY 2012

		Agency Request					Governor's Recommendation				
		Actual FY 2010	Estimate FY 2011	Request FY 2012	Dollar Change from FY 11	Percent Change From FY 11	Rec. FY 2011	Rec. FY 2012	Dollar Change from FY 11	Percent Change from FY 11	
By Program:											
Promotion of the Arts	\$	2,181,094	\$ 1,650,764	\$ 1,906,012	\$ 255,248	15.5%	\$ 1,637,454	\$ 0	\$ (1,637,454)	(100.0)%	
By Major Object of Expenditure:											
Salaries and Wages	\$	430,699	\$ 454,654	\$ 463,877	\$ 9,223	2.0%	\$ 441,344	\$ 0	\$ (441,344)	(100.0)%	
Contractual Services		143,486	202,597	136,011	(66,586)	(32.9)	202,597	0	(202,597)	(100.0)	
Commodities		8,541	8,221	7,660	(561)	(6.8)	8,221	0	(8,221)	(100.0)	
Capital Outlay		4,030	15,772	3,944	(11,828)	(75.0)	15,772	0	(15,772)	(100.0)	
Subtotal - Operations	\$	586,756	\$ 681,244	\$ 611,492	\$ (69,752)	(10.2)%	\$ 667,934	\$ 0	\$ (667,934)	(100.0)%	
Aid to Local Units		71,054	42,617	42,617	0	0.0	42,617	0	(42,617)	(100.0)	
Other Assistance		1,523,284	926,903	1,251,903	325,000	35.1	926,903	0	(926,903)	(100.0)	
TOTAL	\$	2,181,094	\$ 1,650,764	\$ 1,906,012	\$ 255,248	15.5%	\$ 1,637,454	\$ 0	\$ (1,637,454)	(100.0)%	
Financing:											
State General Fund	\$	1,137,624	\$ 811,290	\$ 1,115,413	\$ 304,123	37.5%	\$ 797,980	\$ 0	\$ (797,980)	(100.0)%	
All Other Funds		1,043,470	839,474	790,599	(48,875)	(5.8)	839,474	0	(839,474)	(100.0)	
TOTAL	\$	2,181,094	\$ 1,650,764	\$ 1,906,012	\$ 255,248	15.5%	\$ 1,637,454	\$ 0	\$ (1,637,454)	(100.0)%	

BUDGET OVERVIEW

A. FY 2011 – Current Year

The 2010 Legislature approved a State General Fund budget of \$811,290 for the Kansas Arts Commission in FY 2011. No adjustments have been made to that amount.

CHANGE FROM APPROVED BUDGET					
	Approved 2010 Legislature	Agency Estimate FY 2011	Agency Change from Approved	Governor Rec. FY 2011	Governor Change from Approved
State General Fund	\$ 811,290	\$ 811,290	\$ 0	\$ 797,980	\$ (13,310)
All Other Funds	746,974	839,474	92,500	839,474	92,500
TOTAL	<u>\$ 1,558,264</u>	<u>\$ 1,650,764</u>	<u>\$ 92,500</u>	<u>\$ 1,637,454</u>	<u>\$ 79,190</u>
FTE Positions	8.0	0.0	(8.0)	0.0	(8.0)

The **agency** requests a revised FY 2011 budget of \$1,650,764, an increase of \$92,500, or 5.9 percent, above the amount approved by the 2010 Legislature. The increase is mostly from federal funds. The Commission has approximately \$37,024 of federal funds which were approved by the National Endowment for the Arts to carry forward and expend in FY 2011. The National Endowment for the Arts also awarded the Kansas Arts Commission a Partnership Grant of \$778,200. In addition, the Commission received a National Arts and Disabilities Center Grant funded through the National Endowment for the Arts for \$12,000. The Commission successfully raised funds from private sources to support most of the expenditures of the FY 2010 Governor's Arts Award program with some of the remaining funds in FY 2010 to be carried forward to support the event in FY 2011. The agency estimate includes 8.0 FTE positions, the same as the approved.

The **Governor** recommends operating expenditures of \$1,637,454 in FY 2011, with \$797,980 from the State General Fund. The recommendation includes a lapse of \$13,310, all from the State General Fund, to return salaries and wages to the FY 2011 approved level. The recommendation includes 8.0 FTE positions.

B. FY 2012 – Budget Year

FY 2012 OPERATING BUDGET SUMMARY			
	Agency Request	Governor's Recommendation	Difference
Total Request/Recommendation	\$ 1,906,012	\$ 0	\$ (1,906,012)
FTE Positions	0.0	0.0	(8.0)
Change from FY 2011:			
<i>Dollar Change:</i>			
State General Fund	\$ 304,123	\$ (797,980)	
All Other Funds	(48,875)	(839,474)	
TOTAL	\$ 255,248	\$ (1,637,454)	
<i>Percent Change:</i>			
State General Fund	37.5%	(100.0)%	
All Other Funds	(5.8)	(100.0)	
TOTAL	15.5%	(100.0)%	
Change in FTE Positions	0.0	0.0	

The **agency** requests FY 2012 expenditures of \$1,906,012, an increase of \$255,248, or 15.5 percent, above the revised FY 2011 estimate. State General Fund expenditures total \$1,115,413, an increase of \$304,123, or 1.4 percent, above the revised FY 2011 estimate. The request includes enhancement funding of \$300,000, all from the State General Fund. Absent the enhancement, the request is \$44,752, or 2.7 percent, below the FY 2011 estimate.

- **Salaries and Wages.** The agency request includes \$463,877, including \$196,942 from the State General Fund, which is an increase of \$9,223, or 2.0 percent, above the revised FY 2011 estimate. The amount represents funding for 8.0 FTE positions and 12 board members. This leaves one of the eight approved FTE positions vacant for the FY 2012 year.
- **Contractual Services.** The agency request includes \$136,011, including \$57,014 from the State General Fund, a decrease of \$66,586, or 32.9 percent, below the revised FY 2011 estimate. The amount reflects agency efforts to reduce expenses for professional services, travel, and other contractual services.

- **Commodities.** The agency request includes \$7,660, including \$3,250 from the State General Fund, a decrease of \$561, or 6.8 percent, below the revised FY 2011 estimates. The reduction is reflected in office supplies.
- **Capital Outlay.** The agency request includes \$3,944, all from the State General Fund, a decrease of \$11,828, or 75.0 percent, below the revised FY 2011 estimate. The agency is requesting software updates and additional filing cabinets, but no software updates as in FY 2011.
- **Aid to Local Units.** The agency requests \$42,617, including \$20,762 from the State General Fund, unchanged from the revised FY 2011 estimate.
- **Other Assistance.** The agency requests \$1,251,903, with \$833,501 from the State General Fund, which is an increase of \$325,000, or 35.1 percent, above the revised FY 2011 estimate. The increase would be used to provide additional grant support for art programs throughout the state. Most of the increase is included in an enhancement request of \$300,000, all from the State General Fund. Absent the enhancement, the increase is \$25,000, or 2.7 percent.

The **Governor** recommends that the agency become a 501(c)(3) known as the Kansas Arts Council. According to Volume I of the Governor's Budget Report, "In acknowledgment of the Commission's valuable role in sponsoring the arts in Kansas and to provide aid during the transition from State agency to private organization", the Governor recommends \$200,000, all from the State General Fund, be passed through the Kansas State Historical Society to the newly formed Kansas Arts Council in FY 2012.

Transfer of Kansas Arts Commission to the Kansas State Historical Society as a 501(c)(3) Kansas Arts Council

The **Governor** recommends an Executive Reorganization Order for FY 2012, including a transfer of the duties and responsibilities of the Kansas Arts Commission, currently a separate state agency, to become a 501(c)(3) not-for-profit called the Kansas Arts Council. State funding for the Council will be provided through the Kansas State Historical Society. All 8.0 FTE positions for the Kansas Arts Commission are eliminated.

Budget Adjustments Related to the Transfer. The Governor's FY 2012 recommendation adds \$200,000, all from the State General Fund, to the budget of the Kansas State Historical Society to serve as pass through funding for the Kansas Arts Council. Changes from the amount requested by the Kansas Arts Commission and the amount recommended in the budget of the Kansas State Historical Society include the following:

- **Enhancement request.** The Kansas Arts Commission had requested a total of \$300,000, all from the State General Fund, to replace grant funding that was eliminated by the 2010 Legislature. The Governor does not recommend the enhancement.
- **Reduced Resources.** The agency's submitted budget for FY 2012 included reduced resources of \$40,771, all from the State General Fund, for grant programs. The Governor recommends the Kansas Arts Commission reorganize as a 501 (c)(3) and therefore the reduced resources are not part of the Governors recommendation.
- **Staff Reorganization.** The Governor recommends eliminating all 8.0 FTE positions.

The table below reflects the difference between the amounts requested by the Kansas Arts Commission for FY 2012 and the amounts recommended in the budget of the Kansas State Historical Society for the Kansas Arts Council.

Transfer Summary

	Agency Request FY 2012	Gov. Rec. FY 2012	Gov. Rec. Difference From Agency Request	
			Amount	Percent
Salaries and Wages	\$ 463,877	\$ 0	\$ (463,877)	(100.0) %
Contractual Services	136,011	0	(136,011)	(100.0)
Commodities	7,660	0	(7,660)	(100.0)
Capital Outlay	3,944	0	(3,944)	(100.0)
Subtotal-Operating	\$ 611,492	\$ 0	\$ (611,492)	(100.0) %
Aid to Local Units	42,617	0	(42,617)	(100.0)
Other Assistance	1,251,903	200,000	(1,051,903)	(84.0)
TOTAL	\$ 1,906,012	\$ 200,000	\$ (1,706,012)	(89.5) %

Financing:

State General Fund	\$ 1,115,413	\$ 200,000	\$ (915,413)	(82.1) %
Federal Funds	755,599	0	(755,599)	(100.0)
All Other Funds	35,000	0	(35,000)	(100.0)
TOTAL	\$ 1,906,012	\$ 200,000	\$ (1,706,012)	(89.5) %

FTE Positions	8.0	0.0	(8.0)	(100.0) %
---------------	-----	-----	-------	-----------

FY 2012 ENHANCEMENTS						
Enhancements	Agency Request			Governor's Recommendation		
	SGF	All Funds	FTE	SGF	All Funds	FTE
Grant Funding	\$ 300,000	\$ 300,000	0.0	\$ 0	\$ 0	0.0

Enhancements Detail

The **agency** requests \$300,000, all from the State General Fund, in enhancements. The agency budget was reduced by this amount at the close of the FY 2010 legislative session. According to the agency, this had a severe impact to the size and number of grants that the agency could award. In FY 2011 the Arts Commission provided 51 Kansas counties with over

4,000 grants for arts related support. These funds will be used for grant programs only, directly impacting the state's economy with an increase in tourism, enhancing education and improving the quality of life throughout Kansas communities.

The **Governor** does not recommend the enhancements.

FY 2012 REDUCED RESOURCES						
Item	Agency Recommendation			Governor's Recommendation		
	SGF	All Funds	FTE	SGF	All Funds	FTE
Grant Programs	\$ (40,771)	\$ (40,771)	0.0	\$ 0	0	0.0

FY 2012 Reduced Resources

The **agency** has submitted a 2.5 percent State General Fund reduction in its reduced resources budget for FY 2012. The reduction of \$40,771 would come entirely from the grant program. The reduction would be achieved by cutting the funds available to finance the agency grant programs in other assistance.

The **Governor** recommends the Kansas Arts Commission reorganize as a 501 (c)(3) and therefore the reduced resources are not part of the Governors recommendation.

Recommended Salary and Wage Adjustments

State Employee Pay Increases. The Governor's FY 2012 recommendation does not include a base salary adjustment for state employees.

Classified Employee Pay Plan. During the 2007 interim, the State Employee Compensation Oversight Commission was charged with the development of a new pay plan for classified employees for the Governor, Chief Justice of the Supreme Court and 2008 Legislature to consider. The Commission endorsed the recommendation of the Hay Group that five separate pay plans be created for state employees in the classified service, with different opportunities for pay increases to acknowledge the different types of work performed. The five pay plans recommended include: a management pay plan for those involved in managerial functions (increases based on performance); a professional individual contributor for employees requiring knowledge of principles and theories of a professional discipline that is normally obtained through a college curriculum (increases within broad bands to reflect different levels of work and performance against established standards); a protective service pay plan for uniformed officers and all other positions that meet the definition of police or law enforcement officer (increases based on achievement of milestone and certification events as well as time on the job and performance); a basic vocational pay plan for employees that perform routine, structured, work where performance can be measured on a pass/fail basis (increases based on the traditional step movement approach, based on time on the job); and a general classified pay plan for those employees who do not fall within the parameters of the other four plans (the pay ranges will have steps below the market rate and an open range above the market rate).

The time frame to fully implement the recommended plan was five years. Under the plan, the classified employees were divided into three groups to first address those with the greatest salary disparity to the market rate. The 2008 Legislature appropriated \$8.5 million from the State General Fund for FY 2009, the first year of the program. The 2008 Legislature also appropriated \$8.5 million from the State General Fund for each year from FY 2010 through FY 2013 to the State Finance Council. The Governor does not recommend continued funding for the plan, and recommends that the \$8.5 million which had been previously appropriated for both FY 2012 and FY 2013 be lapsed.

Longevity Bonus Payments. For FY 2012, the Governor recommends the continuation of the current "temporary" longevity bonus payment program. The recommendation provides for a bonus of \$50 per year of service, with a 10-year minimum (\$500) and a 25-year maximum (\$1,250). The current statutory provisions of the longevity bonus payment are \$40 per year of service, with a 10-year minimum (\$400), and a 25-year maximum (\$1,000). Classified employees hired after June 15, 2008 are not eligible for longevity bonus payments. The estimated cost for the recommended FY 2012 payments is \$12.6 million, including \$5.3 million from the State General Fund. **For this agency,** there are no longevity funds since the Governor recommends an Executive Reorganization Order for FY 2012, including a transfer of the duties and responsibilities of the Kansas Arts Commission, currently a separate state agency, to become a 501(c)(3) not-for-profit called the Kansas Arts Council.

Kansas Public Employees Retirement System (KPERS) Rate Adjustments. A total of \$37.1 million, including \$32.3 million from the State General Fund, is included in the Governor's FY 2012 recommendations for KPERS adjustments. The FY 2012 rate for KPERS regular and school members will increase by 0.6 percent, from 8.17 percent to 8.77 percent, when compared to FY 2011. This increase is attributable to the annual statutory increase for financing the unfunded liability of the KPERS fund.

Funding Sources

Funding Source	Agency Req. Percent of Total FY 2012	Gov. Rec. Percent of Total FY 2012
State General Fund	58.5%	0.0%
Kansas Arts Commission Fee Fund	0.0	0.0
Kansas Arts Commission Gifts	39.7	0.0
Kansas Arts Commission Special Gifts Fund	1.7	0.0
	0.0	0.0
TOTAL	100.0%	100.0%

Note: Percentages may not add due to rounding.

Fee Fund Analysis

The agency does not have fee funds but does receive federal funds. The majority of their federal support is through the National Endowment of the Arts.

Federal Funds. The Kansas Arts Commission receives federal support from the National Endowment for the Arts (NEA) through several grants, the largest of which is a Partnership Agreement program of the NEA. Partnership grants are awarded to state art agencies through a competitive formula process each year. The Partnership grants are used to support ongoing agency programs. In addition, a portion may be used to support the agency's administration. NEA Partnership grants are awarded one fiscal year at a time. However, the NEA does allow the grant period for a Partnership grant to be modified and extended to allow state agencies the flexibility to better manage their grants.

FY 2010. The NEA awarded the agency a Partnership grant totaling \$685,300, which was \$114,000 greater than the original projected federal grant amount of \$571,300. The agency also requested, and was granted, an extension for the Partnership grant from FY 2009; \$42,081 of the funds from this grant will be expended in the first part of FY 2010. The agency was also awarded an NEA Recovery Act grant of \$301,700 to support Kansas Arts Jobs Grants.

FY 2011. The Kansas Arts Commission has approximately \$37,024 of the federal funds by the NEA to carry forward and expend in FY 2011. The NEA also awarded the Kansas Arts Commission a Partnership Grant of \$778,200. The Commission also received a National Arts Disabilities Center Grant funded through the NEA for \$12,000.

FY 2012. The Commission anticipates the NEA Partnership Grant to remain level at \$778,200 and does not anticipate receiving any additional federal grant funds for FY2012.

Resource Estimate	Actual FY 2010	Agency Estimate FY 2011	Gov. Rec. FY 2011	Agency Request FY 2012	Gov. Rec. FY 2012
Beginning Balance	\$ 42,082	\$ 427	\$ 427	\$ 0	\$ 0
Revenue	1,029,100	826,796	826,796	778,200	0
Transfers In	0	1	1	0	0
Total Funds Available	\$ 1,071,182	\$ 827,224	\$ 827,224	\$ 778,200	\$ 0
Less: Expenditures	1,033,508	805,368	805,368	756,344	0
Transfers Out	0	0	0	0	0
Off Budget Expenditures	37,247	21,856	21,856	21,856	0
Ending Balance	<u>\$ 427</u>	<u>\$ 0</u>	<u>\$ 0</u>	<u>\$ 0</u>	<u>\$ 0</u>
Ending Balance as Percent of Expenditures	0.0%	0.0%	0.0%	0.0%	--
Month Highest Ending Balance	September \$ 385,284	September \$ 500,000	September \$ 500,000	September \$ 500,000	\$
Month Lowest Ending Balance	August \$ 0	November \$ 0	November \$ 0	November \$ 0	\$

PROGRAM DETAIL

FTE POSITIONS BY PROGRAM – FY 2010- FY 2012

Program	Actual FY 2010	Agency Est. FY 2011	Gov. Rec. FY 2011	Agency Req. FY 2012	Gov. Rec. FY 2012
Promotion of the Arts	8.0	8.0	8.0	8.0	0.0

PERFORMANCE MEASURES

Measure	2010 Gov. Rec. for FY 2010	Actual FY 2010	Gov. Rec. FY 2011	Gov. Rec. FY 2012
Number of counties participating in KAC sponsored programs	75	75	72	N/A
Number of arts organizations throughout the state which apply to the KAC for funding	240	236	222	N/A



NATIONAL
ENDOWMENT
FOR THE ARTS

The Nancy Hanks Center
1100 Pennsylvania Avenue NW
Washington, DC 20506-0001
202/682-5400
www.arts.gov

January 13, 2011

Ms. Llewellyn Crain
Executive Director
Kansas Arts Commission
700 SW Jackson Street, Ste. 1004
Topeka, KS 66603-3761

Dear Ms. Crain:

Thank you for your inquiry regarding the requirements for state arts agencies to receive Arts Endowment support. These requirements exist to ensure that state arts agencies receiving NEA Partnership Agreement funds have sufficient capacity to operate effectively, serve their constituencies, and maintain accountability for the federal dollars they receive.

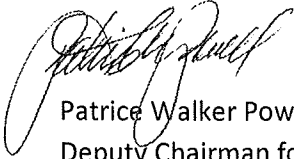
In FY 2010, the Kansas Arts Commission received an NEA Partnership Agreement award of \$778,200 dollars. The ability of the National Endowment for the Arts to continue to make funding available to the Kansas Arts Commission, which in turn benefits the arts and culture industry of Kansas, is predicated on a number of factors, each referenced in NEA's state partnership eligibility requirements:

- The state arts agency must be designated and financially supported by its state government.
- The agency must have the capacity to develop and effectively implement an NEA-approved state arts plan resulting from a statewide comprehensive planning process.
- Federal dollars must be matched on a one-to-one basis. The Endowment's enabling legislation stipulates that federal funds available to state arts agencies "shall not be used to supplant non-federal funds."
- The agency must have its own board, commission or council.

If NEA is funded at its FY-2010 level in FY-2011, the Kansas Arts Commission stands to lose the full \$778,200 in federal partnership funds if the Kansas Arts Commission can not meet the requirements stated above. In addition, the financial stability of Kansas arts organizations in funded by the Commission may also be at risk.

We believe that the longstanding partnership between the State of Kansas and the National Endowment for the Arts has brought substantial benefits to the people of Kansas. I hope that the challenges facing the state can be addressed without sacrificing the outstanding programs of its state arts agency. Please keep the NEA informed so that we may continue to be of assistance. We have also informed our Office of Congressional Affairs of the challenges before the Kansas Arts Commission.

Sincerely,

A handwritten signature in black ink, appearing to read "Patrice Walker Powell", written in a cursive style.

Patrice Walker Powell

Deputy Chairman for Programs and Partnership

14 January 2011

Llewellyn Crain
Executive Director
Kansas Arts Commission
700 Southwest Jackson
Topeka, KS 66603



mid-america
arts alliance

More Art for More People.™

Dear Llewellyn,

I was deeply troubled to learn of Governor Brownback's decision to eliminate the Kansas Arts Commission as a state agency and to replace it with a 501c3 organization. Our partnership with the six state arts agencies that comprise the Mid-America Arts Alliance region is central to our work and we have enjoyed a strong and fruitful relationship with the Kansas Arts Commission since 1972.

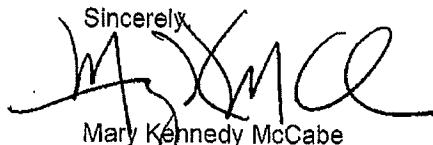
Our bylaws dictate that the official representative partner for Kansas is the state arts agency. While we work with many wonderful nonprofit arts organizations in Kansas, they are not voting partners in our organization, nor do they provide representation on our board of directors. If the governor proceeds with the dissolution of the state arts agency in Kansas, Kansas will no longer be considered a member state of Mid-America Arts Alliance and the constituents of the state will be without the many benefits that come to Kansas through Mid-America Arts Alliance. Those benefits in FY09 alone included:

- Direct grants and exhibition discounts (cash) to Kansas organizations totaling \$143,852.
- Mid-America programs and services to Kansas arts and culture organizations totaling \$437,767; of that total, \$409,467 was non-Kansas Arts Commission funding raised by Mid-America Arts Alliance. Of the contributed income only \$26,043 was raised in Kansas—the remaining \$383,424 was contributed from outside Kansas but was expended exclusively to bring our programs to Kansas.
- 55 projects and 105 educational activities, which served 82,091 Kansans in 26 communities.
- Projects that allowed Kansas artists to earn \$29,750 in artist fees outside of Kansas through our programs.
- Employment and fee support for 490 artists and 25 FTE arts professionals in Kansas.
- \$683,327 in direct arts and culture activity in the state (this is not an economic development multiplier—these are direct cash expenses reported by Kansas users of our programs across the state).

As a Kansas taxpayer myself, I am especially troubled by the loss of \$383,424 federal and private funding outside of Kansas through Mid-America Arts Alliance that will no longer come into the state as a result of this action. Even though the Kansas Arts Commission is ranked #43 for state funding of the arts, the people of Kansas enjoy the many benefits and resources that pour into the state because of the Kansas Arts Commission's partnership work with the National Endowment for the Arts and Mid-America Arts Alliance. Unfortunately, those extraordinary benefits and resources would be unavailable beginning July 1, 2011 if the KAC were dissolved.

If we can be of service in any way during this difficult time, please don't hesitate to contact me. We will watch closely as your future unfolds over the next few months and hope for the best.

Sincerely,



Mary Kennedy McCabe
Executive Director
mary@maaa.org

2018 Baltimore Avenue, Kansas City, Missouri 64108-1914 • (816) 421-1388 • FAX (816) 421-3918

www.maaa.org • www.eusa.org • www.nehontheroad.org

IN PARTNERSHIP WITH:

ARKANSAS ARTS COUNCIL, KANSAS ARTS COMMISSION, MISSOURI ARTS COUNCIL, NEBRASKA ARTS COUNCIL, OKLAHOMA ARTS COUNCIL, TEXAS COMMISSION ON THE ARTS,
THE NATIONAL ENDOWMENT FOR THE HUMANITIES, AND THE NATIONAL ENDOWMENT FOR THE ARTS



Executive Reorganization Order No. 39
By Governor Sam Brownback

Section 1. The Kansas arts commission created by K.S.A. 74-5202, and amendments thereto, and the office of executive director of the commission under K.S.A. 74-5204, and amendments thereto, are hereby abolished.

Sec. 2. (a) The state historical society, as a state agency, as provided in K.S.A. 75-2701, and amendments thereto, shall be the successor in every way to the powers, duties, and functions of the Kansas arts commission and the executive director of the commission in which the same were vested prior to the effective date of this order. Every act performed in the exercise of such transferred powers, duties, and functions by or under the authority of the state historical society shall be performed by existing employees of the state historical society and shall be deemed to have the same force and effect as if performed by the Kansas arts commission or the executive director of the commission in which such powers, duties, and functions were vested prior to the effective date of this order.

(b) Whenever the Kansas arts commission or the executive director of the commission, or words of like effect, are referred to or designated by a statute, contract, or other document, such reference or designation shall be deemed to apply to the state historical society, as a state agency, as provided in K.S.A. 75-2701, and amendments thereto.

(c) All rules and regulations, orders, and directives of the Kansas arts commission or the executive director of the commission, which are in effect on the effective date of this order, shall continue to be effective and shall be deemed to be rules and regulations, orders, and directives of the state historical society, as a state agency, as provided in K.S.A. 75-2701, and amendments thereto, until revised, amended, revoked, or nullified pursuant to law.

Sec. 3. (a) The state historical society, as a state agency, as provided in K.S.A. 75-2701, and amendments thereto, shall succeed to all property, property rights, and records which were used for or pertain to the performance of powers, duties, and functions transferred to the state historical society. Any conflict as to the proper disposition of property, or records arising under this order shall be determined by the governor, whose decision shall be final.

(b) Whenever any statute, contract, deed or other document concerns the power or authority of Kansas arts commission, or the executive director of the commission, to acquire, hold or dispose of real property or any interest therein, the state historical society, as a state agency, as provided in K.S.A. 75-2701, and amendments thereto, shall succeed to such power or authority.

Sec. 4. (a) The balances of all funds or accounts thereof appropriated or reappropriated for the Kansas arts commission relating to the powers, duties, and functions transferred by this order are hereby transferred within the state treasury to the state historical society, as a state agency, as provided

in K.S.A. 75-2701, and amendments thereto, and shall be used only for the purpose for which the appropriation was originally made.

(b) Liability for all accrued compensation or salaries of officers and employees who are employees of the Kansas arts commission during the period commencing on the first day of the first payroll period chargeable to fiscal year 2012 and ending in on June 30, 2011, shall be assumed and paid by the state historical society, as a state agency, as provided in K.S.A. 75-2701, and amendments thereto.

Sec. 5. When any conflict arises as to the disposition of any property, power, duty, or function or the unexpended balance of any appropriation as a result of any abolition or transfer made by or under the authority of this order, such conflict shall be resolved by the governor, whose decision shall be final.

Sec. 6. (a) No suit, action, or other proceeding, judicial or administrative, lawfully commenced, or which could have been commenced, by or against any state agency or program mentioned in this order, or by or against any officer of the state in such officer's official duties, shall abate by reason of the governmental reorganization effected under the provisions of this order. The court may allow any such suit, action, or other proceeding to be maintained by or against the successor of any such state agency or any officer affected.

(b) No criminal action commenced or which could have been commenced by the state shall abate by the taking effect of this order.

Sec. 7. Except as otherwise provided by this order, all of the provisions of this order shall take effect and have the force of general law on July 1, 2011, unless disapproved by either house of the Kansas legislature as provided by subsection (c) of section 6 of article 1 of the constitution of Kansas, and unless so disapproved, this order is to be published as and with the acts of the legislature and the statutes of this state.

DONE AT The Capitol in Topeka
Under the Great Seal of the
State of Kansas this 7th day
of February 2011.

BY THE GOVERNOR:

Sam Brownback

Dated: _____

Secretary of State of Kansas

Asst. Secretary of State of Kansas

1-49

Total State Arts Agency Revenue Sources, Selected States Fiscal Year 2011

State	Total Agency Revenue	Total Legislative Appropriation		Other State Funds		National Endowment for the Arts Funds		Private and Miscellaneous Funds	
		Dollars	% Total	Dollars	% Total	Dollars	% Total	Dollars	% Total
Colorado*	\$ 4,294,341	\$ 1,121,726	26.1 %	\$ 2,341,215	54.5 %	\$ 826,400	19.2 %	\$ 5,000	0.1 %
Iowa	2,537,012	1,023,712	40.4	716,800	28.3	792,200	31.2	4,300	0.2
Missouri**	8,395,305	7,611,505	90.7	--	0.0	783,800	9.3	--	0.0
Nebraska^	2,712,267	1,432,887	52.8	398,580	14.7	880,800	32.5	--	0.0
Oklahoma	5,272,089	4,406,689	83.6	--	0.0	845,400	16.0	20,000	0.4
Kansas	1,635,991	811,290	49.6	--	0.0	778,200	47.6	46,501	2.8
Vermont	1,709,400	507,607	29.7	245,300	14.4	814,800	47.7	141,693	8.3
All State Arts Agencies	\$ 346,191,703	\$ 272,018,157	78.6	21,636,152	6.2 %	\$ 47,632,500	13.8	\$ 4,904,894	1.4 %

Other State Funds include funds secured by the SAA separate from its legislative appropriation, such as transfer funds from other state departments and some public art dollars.

Private and Miscellaneous Funds include foundation support, corporate and individual support and non-NEA federal grants.

** From FY10 to FY11 Colorado's public art funds (in the other state funds category) increased nearly 900%. In FY10 the SAA's total revenue was \$2.2 million: \$1.2 million in legislative appropriations (54%); \$237K in other state funds (11%); \$773K in NEA funds (35%); and \$5K in private funds (<1%).*

*** In FY11 the SAA was not appropriated any funds but was instead directed to spend principal from the state-run cultural endowment. The figure here represents the spending authority from the legislature.*

^ Total legislative appropriation includes \$186,200 in line items (pass through funds) designated for the Nebraska Humanities Council.

Testimony on Governor Brownback's Arts Commission Reorganization
Landon Fulmer, Policy Director
Subcommittee Hearing, February 8, 2011

Yesterday, February 7, Governor Brownback issued Executive Reorganization Order No. 39, which abolishes the Kansas Arts Commission. It was be transmitted to the Legislature today, February 8.

ERO 39 abolishes the Arts Commission and transfers the duties, powers, and functions of the Commission to the State Historical Society.

If ERO 39 stands, the Historical Society will act as the "state agency" for the purpose of transmitting Kansas' state plan to the National Endowment for the Arts in order to ensure continued federal matching funds.

In addition to ERO 39, the newly formed Kansas Arts Foundation, Inc., a 501(c)3 corporation in the State of Kansas, will provide staff and programmatic support to the Historical Society to ensure Kansas' participation in federal and regional arts programs.

According to the Governor's FY2012 Budget Report to the Legislature, the Historical Society would receive \$200,000 to pass through to the Arts Foundation for the purpose of providing seed money to the organization as it gets its fund raising operation up and running.

The Arts Foundation will be independent of state government and will be able to solicit tax-deductible donations. Their purpose will be to help advance the arts in Kansas and provide support to state government and local arts initiatives.

The practical effect of these reorganizations is that state government will save approximately \$575,000 in SGF in FY2012 while providing a framework within which the arts will not only continue to receive state and federal support, but also to receive support from the private sector.

Attached is a letter from Karen Elias, the General Counsel at the National Endowment for the Arts in Washington, DC. Of particular note in this letter is the second paragraph on the second page:

"With respect specifically to a proposal for an allotment of \$200,000 in state funds to the Kansas Arts Commission and the remaining amount required to receive the full federal allotment made up with private funds, the release of those federal funds would be contingent upon the meeting of the match. Should a match be partial (less than 1:1) the NEA, in accordance with its legislation—again see § 954(g)(3) and (4) authorized to release an amount equal to the partial match."

Through the mechanism of the Historical Society and the support of the Kansas Arts Foundation, the Governor's reorganization as embodied in ERO 39 will set up a system by which the support of the arts in Kansas will truly be a public/private partnership.

House Education Budget Committee
Date: Feb. 8, 2011
Attachment #: 2

January 28, 2011

MEMORANDUM

TO: Laura Scanlan
State and Regional Director

FROM: Karen Elias
General Counsel

SUBJECT: Questions from State of Kansas

Thank you for sending Kansas Director of Budget Steve Anderson's message to me. With respect to Mr. Anderson's questions regarding regulations, the National Endowment for the Arts publishes programmatic guidelines that include eligibility requirements prescribed in its legislation.

The legal eligibility requirements listed in guidelines are governed by the legislation. Both the guidelines and the legislation are on the agency's web site. The provision specifically concerning state and regional organizations is found at 20 U.S.C. § 954(g). Specifically,

- (g)(1) specifies the NEA Chairman's authority with respect to partnerships with the States;
- (g)(2) specifies what each State is required to provide in its application for funding, including its state plan which the Chairman is authorized to accept if the state plan meets the criteria specified in that subsection;
- (g)(3) specifies how and in what amounts funds are available for release to the States with adequate state plans;
- (g)(4)(A) stipulates that the "amount of each allotment to a State for any fiscal year under this subsection shall be available to each State, which has a plan approved by the Chairman in effect on the first day of such fiscal year, to pay not more than 50 per centum of the total cost of any project or production described in paragraph (1)" – this is what is commonly referred to as the 1:1 matching requirement.

The NEA legislation does not require, nor has the NEA stipulated, that a state's "general funds" be used as the state 1:1 match of the federal allotment. In fact, as you are well aware, several states use other funding mechanisms for their state share or to augment their state share, e.g., state lottery proceeds or license plate funds.

With respect specifically to a proposal for an allotment of \$200,000 in state funds to the Kansas Arts Commission and the remaining amount required to receive the full federal allotment made up with private funds, the release of those federal funds would be contingent upon the meeting of the match. Should a match be partial (less than 1:1) the NEA, in accordance with its legislation – again see § 954(g)(3) and (4) -- would be authorized to release an amount equal to the partial match.

Finally, the notification sent to the NEA's Office of Congressional Affairs, as you know, is standard protocol when any state agency, including in some instance the Governor's Office, is involved. In short, it's sent as a courtesy to colleagues here at the NEA.

Please let me know if I can provide further assistance.

Cc: Patrice Walker Powell
Deputy Chairman for Programs & Partnerships



**Testimony to
The House Appropriations Education Subcommittee
February 8, 2011**

Thank you for the opportunity to appear before you today to discuss the budget of the Kansas State Historical Society. Our purpose is to safeguard and share the state's history. In addition to the state's collections, the agency is responsible for the care of more than 50 buildings and structures throughout the state. The following responsibilities are defined by state statute:

Government Accountability:

We are the keeper of the state's records, archives, and artifacts. The state has been collecting materials in regard to state government and critical events and issues in Kansas history since 1875. It is our responsibility to preserve these materials and also make them readily available to the public. The collections include such things as the state constitution, Civil War state militia battle flags, and state agency records.

Education:

The state of Kansas requires the teaching of state history and government for grades K-12. Our agency serves the schools of Kansas by developing curriculum material for the classroom as well as providing training for teachers.

Economic Development:

The agency provides assistance and incentives to communities, business owners, and individual property owners in preserving their historic buildings and districts. The agency is also responsible for the state history museum and 16 state-owned historic sites.

In FY 2010 the agency recorded more than 7.6 million users, and our programs reached across the state of Kansas and beyond. This is a 16 percent increase in audience between FY 2008 and FY 2010.

History of Budget Reductions

The agency recognizes current financial problems the state is experiencing and understands the difficult decisions the Kansas Legislature has been forced to make. We also recognize that the Kansas State Historical Society must take its share of budget reductions.

State General Fund

The following chart shows the state general fund (SGF) monies allocated to the agency in the last five years. SGF has decreased by 16 percent during this time period, resulting in a decrease of almost \$1 million.

Five Year Overview of SGF Budget

FY	SGF
2008	6,410,161
2009	6,109,773
2010	5,573,652
2011	5,370,179
2012	5,396,630*

*2012 represents the Governor's recommendation that includes a 5 percent SGF reduction to the agency's SGF allocation, but adds additional monies for a Kansas Arts Commission pass-through.

Staffing

In the last five years the agency has reduced its staff by 33 percent. In 2010 the agency laid off a total of 12 positions. Others positions have been left empty when they become vacant. Seventy-three percent of the agency's SGF budget is dedicated to salaries; therefore, it is impossible to address a budget crisis without addressing staffing.

Program Reductions

In order to meet current budget challenges, we reevaluated all agency programs in terms of:

- Statutory requirements;
- Cost to benefit analysis;
- Analysis of audience needs;
- Opportunities for public/private partnerships.

This type of business planning, along with the constraints of a reduced budget, has resulted in a variety of program cancellations in addition to staff lay offs. We have not decreased any funding that goes directly to the public through grants.

FY 2012 Budget

The Governor's budget for FY 2011 (\$5,396,630) reduces the agency's SGF base budget by 5 percent. It contains no new or additional programs. It funds the agency's statutory obligations in the areas of cultural resources, education, historic sites, museum, and state archives.

The 2012 Governor's budget includes SGF pass-through monies for three organizations.

2012 Pass-Through Funding

Organization	FY 2012 Pass-Through Funding	Type of Organization (currently)	Purpose
Kansas Arts Commission	\$ 200,000	State Agency	Provided to transition the agency to a not-for-profit organization
Kansas Heritage Center	\$ 22,232	Governed by USD 443 (Dodge City)	Assists in funding a catalog of resources and a part-time employee
Kansas Humanities Council	\$ 65,157	Not-for-Profit organization	Assists in funding Heritage Grants and outreach programs

The agency is focusing on increasing our earned income. However, user fees are at their maximums for today's economy. The agency has switched some previous SGF expenses over to fee funds. However, those fee funds that are not restricted are being quickly depleted.

The Governor's budget includes the agency's annual allocation of emergency repair monies (\$125,000) for the 50 buildings under the Historical Society's care. This money is critical to the agency. For example, during the severe weather conditions in January, several historic sites required repairs due to damage caused by extreme temperatures and weather conditions.

2012 Goals

Our goals for FY 2011 remain similar to those in FY 2010.

- Continue baseline operations to preserve the state's records and collections.
- Provide instructional materials on Kansas history to schools.
- Provide economic development assistance to Kansas communities and businesses for the preservation and adaptation of their historic resources.
- Operate the Kansas Museum of History and the state's 16 historic sites.
- Address the critical need to preserve electronic records of state government.
- Coordinate the state's efforts to commemorate the sesquicentennial of the Civil War at the completion of the state sesquicentennial commemoration.
- Develop a long-range business plan to address reduced state resources.

Impact of Governor's 5 Percent Budget Reduction

The SGF decrease in the agency's FY 2012 budget (\$273,507) includes the following.

5% Reduction	Purpose	Impact
\$ 4,599	A 5 percent reduction in pass through funds for the Kansas Humanities Council and the Kansas Heritage Center	Reduction in programming monies
\$ 98,908	The addition of shrinkage to the budget resulting in \$98,908 reduction in SGF salaries	Possible lay-offs of three to six and corresponding program reductions such as reduced public hours at the museum and the state archives.
\$ 170,000	Reduction in historic sites operations with the suggested replacement of earned income from sites admissions (fee funds)	In FY 2010 the 16 historic sites earned \$50,694 in admissions. The agency is currently working on business plans to increase site income. If increased revenues cannot be earned then sites will reduce public hours and some will be closed seasonally.

Conclusion

The mission of the Kansas State Historical Society is unique in state government. We are the only agency assigned to preserve and make accessible the records of our state activities and state government. Maintaining authentic records is a critical function of government. We use these records to provide schools with materials that teach our children critical thinking skills and civic responsibility. We also assist with the economic development of the state by providing financial incentives for communities and businesses to rehabilitate and repurpose their historic resources. A Rutgers University report in 2010 stated that historic preservation in Kansas produces more jobs than new construction. Finally, we remind Kansans and visitors alike of the important role Kansas has played in our nation through the Kansas Museum of History and the state historic sites.

We respectfully request your consideration of the Governor's budget for the Kansas State Historical Society. I appreciate the opportunity you have given me today to address the agency's budget. Please contact me at any time if you have questions or comments.

Jennie Chinn
Executive Director
Kansas State Historical Society
(785) 272-8681 x 205
jchinn@kshs.org



**Kansas Humanities Council
FY12 Budget Request and Testimony**

Contact

Julie Mulvihill, Executive Director
julie@kansashumanities.org
785-357-0359

FY12 Request

The Kansas Humanities Council supports the Governor's recommendation of \$65,157 for FY12. This figure reflects a 5% reduction from FY11.

Who We Are

The Kansas Humanities Council is a 501c3 nonprofit organization that provides access to funding and resources for the state's non-profit cultural community. KHC's essential functions fall into two categories:

- To provide grant opportunities for in-state non-profit organizations.
- To provide resources for use by in-state non-profit organizations.

Mission and Vision

The Kansas Humanities Council promotes an understanding of the history, traditions, and ideas that shape our lives and strengthen our communities. Through grant projects and program resources, Kansans can better understand who we are, where we've been, and what we've valued over time and across generations.

KHC Impact

In 2010, KHC supported 578 events in 101 communities. A combination of federal funds, state funds, and private fundraising enables KHC to have this level of outreach. *Please see attached Outreach map and "Organizations that Depend on KHC" document.*

State Funding & KHC

KHC's current FY11 income:

- 83% in federal funds, from the National Endowment for the Humanities
- 9% from fundraising, gifts from Friends of the Humanities, and grants from foundations
- 8% from the State of Kansas
- *State and private funds are used to leverage federal dollars.*

History of State Funding

- KHC has *never* been a state agency.
- KHC received its first state appropriation in 1989 for \$65,000.
- KHC has not received any enhancement funds from the State of Kansas since FY08.
- KHC receives State funding through a line item in the Kansas Historical Society budget.
- The FY12 amount reflects approximately a 20% reduction in state funding since FY09.

How FY12 Funds will be Used

100% of the \$65,157 in State Funds will be used to support direct program services in the following two categories:

1. Heritage Grants

Support for projects that assist communities with the preservation of local history, including collecting oral histories, conducting research, creating interpretive materials, training for staff and volunteers, and caring for artifacts, maps, photographs, and other similar items.

Board of Directors

Myrna Barnes, Elkhart
Carolyn Benitez, Wichita
Tony Brown, Baldwin City
Deborah Divine, Salina
John Federico, Topeka
Marc Galbraith, Topeka
Ellen Hansen, Emporia
Warren Hixson, Hutchinson
Cynthia Luxem, Topeka
Susan Lynn, Iola
Beverly Mack, Lawrence
Karen McCulloh, Manhattan
James McHenry, Topeka
Gene Merry, Burlington
Shala Mills, Hays
Aaron Otto, Roeland Park
John Pierce, Lawrence
Jay Price, Wichita
David Procter, Manhattan
Kimberly Stanley, McPherson
Susan Sutton, Concordia
David Waxse, Kansas City

Executive Director

Julie Mulvihill

2. Outreach Resources / Public Programs

Support for presentations on Kansas and American history; book and film discussions; Kansas tour of special "Museum on Main Street" traveling Smithsonian exhibition.

Past results of State Funding

In FY10, the \$68,273 in State funds helped support:

- 6-stop Kansas tour of the traveling Smithsonian exhibition, *Journey Stories*.
- 16 grants
- 106 Outreach Public Programs

Impact of An Additional Cut of 5% (or \$3,258)

Reduction of approximately 18 Outreach Public Programs available to Kansans.

Note: Congress is proposing at least a 5% cut in NEH funds to Kansas. Federal dollars will not be available as a replacement for reductions in State funding.

Reasons why Funding is Important to KHC

KHC resources support hometown cultural non-profits and respond to their needs for high-quality lifelong learning programs for citizens as well as access to funding opportunities. KHC programs eliminate barriers - like staff resources, time, and even population - that prohibit community organizations from doing it without assistance. KHC grants and Outreach programs can also:

Extend Local Resources

"We can keep the doors open and provide basic services, but it's the KHC programs and projects that really kick us up a notch and enhance our library and community."

- Jean Strader, Librarian in **Parsons**. KHC book discussions, speakers, and exhibits are an affordable way for the library to provide quality programming to the community.

Stimulate Local Economies

"Area motels were filled and business boomed for restaurants and shops."

- Susan Raines, Project Director, **Iola**. The KHC-supported Buster Keaton Celebration has attracted visitors from 51 Kansas towns, 23 states, and 4 countries.

Create Public and Private Partnerships

"The fact that we cooperated toward a common goal sent a valuable message that we all believe Hays' history is valuable."

- Kim Perez, Project Director, **Hays**. A KHC grant project to interpret the commercial history of downtown mobilized the resources and support of the university, downtown businesses, and community organizations.

Encourage Best Practices

"Without our heritage consultant, we would not have known where to start cleaning, preserving, and cataloging our historic glass plate negatives. KHC provided the exact support we needed, and for that, we will always be grateful."

- Michael Hathaway, Project Director, **St. John**. KHC grant funds supported the preservation of a one-of-a-kind collection documenting over 100 years of local history.

Serve Communities of All Sizes

"...we are so fortunate to be able to use the likes of the Kansas Humanities Council...The variety it offers and the expertise of the presenters is an advantage we would find hard to find on our own...."

- Anna Taber, local coordinator, **Kingman**. A program united the KHC presenter and audience in an in-depth discussion.

Summary of KHC

- KHC was formed in 1972.
- KHC is an independent 501c3 nonprofit.
- KHC has never been a state agency.
- KHC is governed by a volunteer Board of Directors.
- KHC accesses state funding as a line item in the Kansas Historical Society's budget. However, KHC is not governed by KHS. KHC and KHS are two separate organizations.
- Primary support comes from the National Endowment for the Humanities.
- KHC is obligated to match the NEH funding penny for penny. This can be achieved through a combination of in-kind and cash. The NEH does *not* have a cash requirement for humanities councils.
- State funding helps match federal dollars.
- KHC raises additional funds through private donors and foundations. In 2010, KHC raised \$75,410.

Thank You

On behalf of the Kansas Humanities Council, thank you for your interest and your support.

Kansas 150 Update

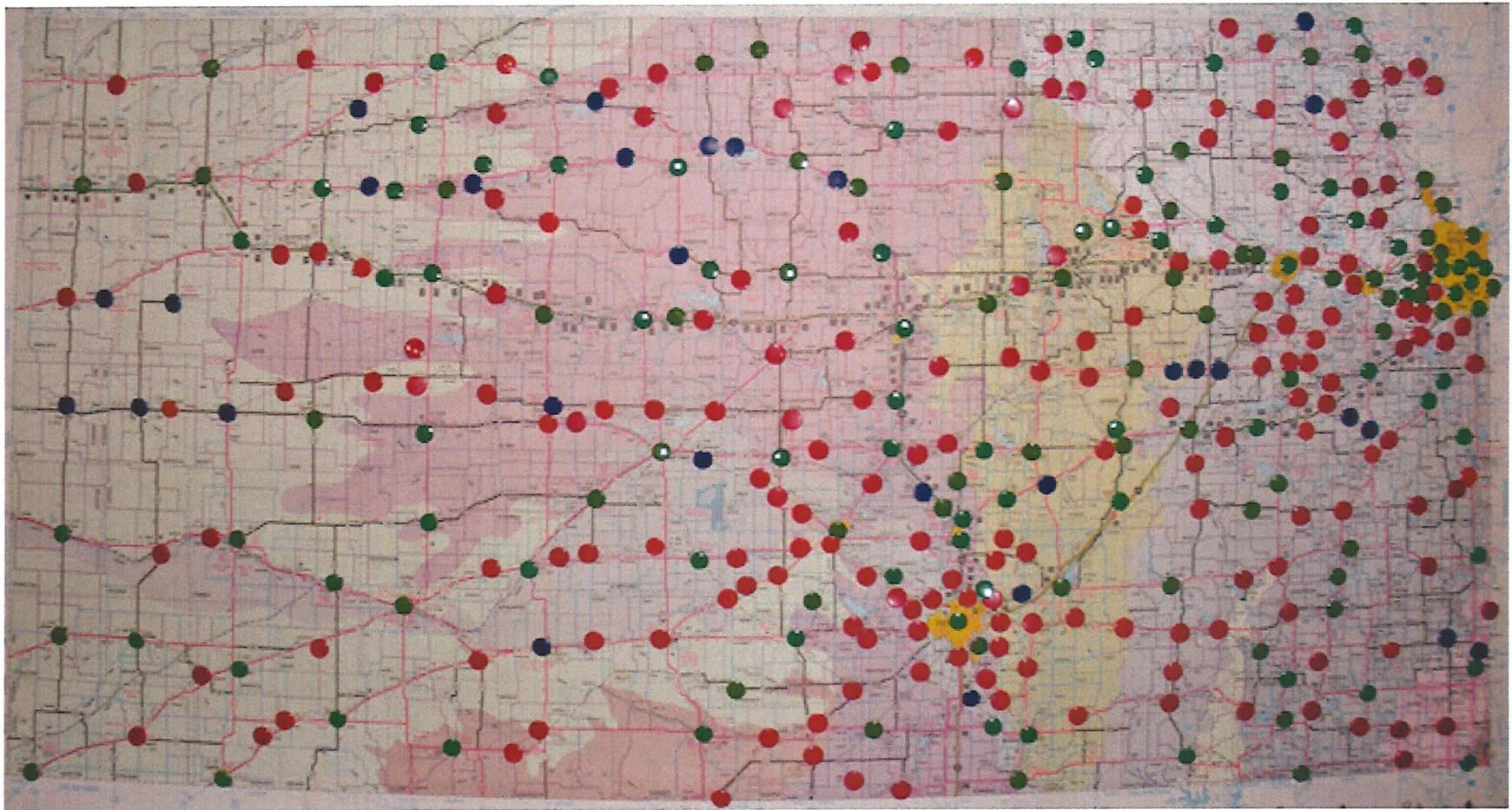
Using federal and state funding, KHC created special statehood resources for Kansas communities to use during the sesquicentennial year. *Please see the attached "Statehood Events" map and the "150th Anniversary of Kansas Statehood: How the Kansas Humanities Council is Helping Communities" document.*

4-4



Kansas Humanities Council Outreach 1990-2010

In 2010, KHC supported 578 programs in 101 communities.



● Site of RESOURCE CENTER Event(s)

● Site of GRANT AWARD(s)
& Resource Center Event(s)

● Site of GRANT-FUNDED Event(s)
& Resource Center Event(s)

www.kansashumanities.org

KANSAS HUMANITIES COUNCIL Board Members

Current Board Members

Myrna K. Barnes, Elkhart
 Carolyn Benitez, Wichita
 Tony Brown, Baldwin City
 Deborah Divine, Salina
 John Federico, Topeka
 Marc. R. Galbraith, Topeka
 Ellen Hansen, Emporia
 Warren Hixson, Hutchinson
 Cynthia Luxem, Berryton
 Susan Lynn, Iola
 Beverly Mack, Lawrence
 Karen McCulloh, Manhattan
 James A. McHenry, Topeka
 Gene L. Merry, Burlington
 Shala Mills, Hays
 Aaron Otto, Roeland Park
 John C. Pierce, Lawrence
 Jay M. Price, Wichita
 David Procter, Manhattan
 Kimberly Stanley, McPherson
 Susan Sutton, Concordia
 David J. Waxse, Kansas City

Alumni

Don Ablah, Wichita *
 Janice Allen, Salina *
 Randolph G. Austin, Topeka
 Thomas Averill, Topeka
 William G. Bartholome, Kansas City *
 Dr. J. Hamby Barton, Winfield
 Angela Bates Tompkins, Bogue
 Barbara Becker, Lawrence
 Julia Piper Beckwith, Parsons *
 Larry Berg, Hays
 Donald E. Biggs, Kansas City MO
 Judy Billings, Lawrence
 Joyce Boone, Garden City
 Margie T. Braden, Clay Center
 Christie P. Brandau, Topeka
 Shirley Mills Braxton, Salina
 Sr. Marie Brinkman, Leavenworth
 Charles S. Brown, Emporia
 Cheryl Brown Henderson, Topeka
 Maurice L. Bryan, Jr., California

Paul Custodio Bube, Batesville AR
 Dr. Martin H. Bush, Wichita
 Robert Caldwell, Salina *
 William E. Carpenter, Memphis TN
 Judy Carroll, Independence
 Peter Casagrande, Eudora
 Camilla Luther Cave, Dodge City *
 John Chalmers, Manhattan
 Phyllis Chase, Topeka
 Gene T. Chavez, Kansas City
 Jacinto A. Cobos, Topeka
 Steve Coen, Wichita
 Mary Cohen, Shawnee Mission
 Michael B. Colgan, Wichita
 Sr. Mary Collins, Washington DC
 Raymond D. Crisp, Lincoln NE
 L. C. Crouch, Topeka
 Gayle R. Davis, Allendale MI
 Jill Docking, Wichita
 Dennis Domer, Lexington KY
 Paul Faber, Hays
 Paul Fleener, Manhattan
 James Forsythe, Hays
 Marilyn Foster Kirk, Evanston IL
 Nola Foulston, Wichita
 William Galvani, Gales Ferry CT
 Susan H. Garlinghouse, Topeka
 Terry Glasscock, Lexington MA
 Dale Gleason, Hutchinson
 Jacob U. Gordon, Lawrence
 Diane Grant Low, Lawrence
 Cletus Grosdidier, Eudora
 Helen Hadley, Hutchinson
 Jacqueline Hampton, Kansas City
 Carl Hansen, Fremont NE
 Paul Hawkins, Hutchinson
 Dr. Tom Hemmens, Pittsburg *
 Harold Herd, Topeka
 Raylene Hinz-Penner, Topeka
 Ernst Hintz, Kirksville MO
 Sharon Hixson, Hutchinson
 Cora Hobbie, Topeka *
 Merle Hodges, Salina
 Mary Lynn Holbrook, Overland Park
 Kathleen Holt, Cimarron
 Quentyn Hope, Denver CO
 Mary Kay Horner, Fairway

Cindy Howard, Wichita
 Robert P. Hudson, Olathe
 Karen M. Humphreys, Wichita
 Prudence Hutton, Las Vegas NV
 Frances Jackson, Wichita
 Gail James, Philadelphia PA
 Anita Jones, Wichita
 Donna Jones Morris, Pueblo CO
 James C. Juhnke, North Newton
 Janet Juhnke, Salina
 Bruce R. Kahler, Lindsborg
 Nancy Landon Kassebaum, Burdick
 Mike A. Kautsch, Lawrence
 Martin J. Keenan, Great Bend
 Steven Kite, Hays
 Owen J. Koeppe, Columbia MO
 Bill Lamb, Cedar Rapids IA
 Robert Linder, Manhattan
 Janet Lloyd-Williams, Wichita
 Sally Shank Luallen, Wichita
 Robert Luehrs, Hays
 James Maag, Topeka
 Peter M. Macdonald, Hutchinson *
 Doreen Maronde, Overland Park
 Janet Martinek, Silver Lake
 Charles McAfee, Wichita
 Eleanor McCoy, Chanute
 Edward McGlone, Emporia
 Shannon McPartland, Wichita
 Stephen E. Meats, Pittsburg
 Carol Meisenheimer, Kingman
 Dennis Mesa, Garden City
 Russell J. Meyer, Emporia
 Margaret Meyers, Garden City
 Nyle Miller, Topeka *
 Craig Miner, Wichita *
 Rita G. Napier, Lawrence
 Lois Nettleship, Fullerton CA
 Richard A. Nida, Catonsville MD
 Jan O'Connor, Pittsburg
 Gerald H. Paske, Wichita
 Loren Pennington, Emporia
 Deborah Peters, O. S. B., Atchison
 John Peterson, Emporia
 Bill Pitts, Oklahoma City OK
 Elaine Polsky, Prairie Village
 Richard Rademacher, Wichita

Onamae Ratcliff, Atwood *
 J. Karen Ray, Topeka
 David J. Rebein, Dodge City
 Marilyn Rhinehart, Overland Park
 Robert W. Richmond, Topeka
 Peter J. Ristuben, Lindsborg *
 W. Stitt Robinson, Lawrence
 Robert Quinn Rohde, Neodesha *
 Sr. Charlotte Rohrbach, Wichita
 Barbara Sabol, Lawrence
 John L. Saylor, Lyons
 Marjorie Schnacke, Topeka *
 Sr. Monica Schneider, Salina, *
 Edward Seaton, Manhattan
 Frederick D. Seaton, Winfield
 Anita C. Skeen, Okemos MI
 Donna Skinner, Garden City
 Wilda M. Smith, Hays
 Dr. Jacqueline Snyder, Wichita
 Dr. John L. Somer, Emporia
 Nancy C. Stover, Schaumburg IL
 Morey Sullivan, Topeka
 Carol Sweat, Wallace
 Deanell Reece Tacha, Lawrence
 Gary Thomas, Wichita *
 Pat Thompson, Boulder CO
 Annette Thornburgh, Topeka
 Richard L. Torgerson, Lindsborg
 William M. Tsutsui, Lawrence
 Patricia Tubbs, Colby
 June Underwood, Portland OR
 Roger Verdon, Topeka
 Michael Vincent, Paris France
 Nancy Vogel, Hays
 Ernestine Voss, Florida
 Faye Nell Vowell, Silver City NM
 William O. Wagnon, Jr., Topeka
 Paul David Walker, Jr., Emporia
 Howard Walker, Lawrence
 Anne Wigglesworth, Manhattan
 Shari Wilson, Kansas City
 Theodore A. Wilson, Lawrence
 June Windscheffel, Topeka
 Esther Valladolid Wolf, Lenexa
 Barbara Wunsch, Kingman
 Robert Wunsch, Kingman
 D. Arthur Zook, Lees Summit MO

Deceased (*)



Organizations that Depend on the Kansas Humanities Council Results for Calendar Year 2010

Contact Julie Mulvihill, Executive Director
julie@kansashumanities.org, 785/357-0359

KHC is able to provide this level of statewide outreach through funding from the State of Kansas, the National Endowment for the Humanities, and private gifts.

Speakers Bureau presentations and discussions

114 Organizations

Abilene	Abilene & Smoky Valley Rail Road	Hays	Kansas State Historical Society
Abilene	Dickinson County Historical Society	Haysville	Haysville United Methodist Church
Abilene	Heritage Homes Association	Hesston	Hesston College
Ashland	Clark County Conservation District	Hiawatha	Brown County Historical Society
Atchison	Atchison County Historical Society	Hill City	Graham County Public Library
Atchison	Atchison Public Library	Hutchinson	Hutchinson/Reno Arts & Humanities Council
Atchison	Friends of Atchison Public Library	Hutchinson	Hutchinson Rotary Club
Augusta	Augusta Public Library	Hutchinson	Santa Fe Trail Association, Quivira Chapter
Belleville	Belleville Public Library	Iola	Allen County Historical Society
Burlington	Burlington Branch of Coffey County Library	Jetmore	Hodgeman County Genealogical Society
Canton	McPherson County Historical Society	Junction City	Dorothy Bramlage Public Library
Chanute	Friends of Chanute Public Library	Junction City	Geary County EEU Council
Clay Center	Friends of Clay Center Carnegie Library	Junction City	Junction City Arts Council
Colby	Prairie Museum of Art & History	Kansas City	Argentine Branch Library
Concordia	Talk of the Month	Kansas City	Kansas City Presbyterian Manor
Corning	Kansas Assn for Family and Community Education	Kingman	Talk of the Month
Cottonwood Falls	Prairie Fire Festival	Kinsley	Kinsley Library
Dodge City	Boot Hill Museum	La Crosse	Golden Belt Community Foundation
Dodge City	Dodge City Public Library Foundation	LaCygne	Friends of Linn County Library District 2
El Dorado	Butler Community College, Life Enrichment	Lakin	Kearny County Library
El Dorado	Coutts Memorial Museum of Art	Lansing	Lansing Historical Museum
Emporia	American Association of University Women	Larned	Fort Larned Historical Society
Emporia	AARP Lyon County Chapter	Larned	Santa Fe Trail Center
Emporia	Kansas Library Assn, College & University Section	Lawrence	Babcock Place
Eureka	Friends of Eureka Public Library	Lawrence	Douglas County Historical Society
Fairway	Shawnee Indian Mission State Historic Site	Lawrence	New Generation Society of Lawrence
Fort Scott	Fort Scott Community College	Leavenworth	Leavenworth County Historical Society
Fort Scott	Fort Scott National Historic Site	Leavenworth	Leavenworth Public Library
Fort Scott	Historic Preservation Assn of Bourbon Co	Lenexa	Monticello Community Historical Society
Frankfort	Marshall County Historical Society	Lincoln	Lincoln County Historical Society
Fredonia	Wilson County Historical Society	Madison	Madison Concert & Lecture Series
Garden City	Senior Center of Finney County	Manhattan	Kansas State University Social Club
Garnett	Anderson County Historical Society	Manhattan	Riley County Genealogical Society
Goodland	High Plains Museum	Marysville	Marysville Public Library
Gridley	Gridley Branch of Coffey County Library	Meade	Meade County Historical Society
Halstead	Halstead Public Library	Newton	Harvey County Historical Society
Hanover	Hollenberg Station State Historic Site	North Newton	Bethel College, Life Enrichment
		Ottawa	Franklin County Genealogical Society
		Ottawa	Ottawa Library
		Overland Park	JCCC Brown & Gold Club
		Paola	Paola Free Library
		Park City	Chisholm Trail Seniors
		Park City	Friends of Park City Public Library

Park City	Park City PRIDE
Parsons	Parsons Historical Society Museum
Parsons	Parsons Public Library
Partridge	Partridge Community Association
Prairie Village	Kansas City Posse of Westerners
Saint George	Young at Heart, Pottawatomie County
Saint John	Ida Long Goodman Memorial Library
Salina	Kansas Assn for Conservation & Environmental Education
Salina	Radio Kansas
Salina	Salina Public Library
Salina	Smoky Hill Museum
Shawnee	Shawnee Town Museum
Tonganoxie	Tonganoxie Community Historical Society
Tonganoxie	Tonganoxie Public Library
Topeka	Aldersgate Village
Topeka	Brewster Place Foundation
Topeka	Kansas Housing Conference
Topeka	Kansas Mayflower Society
Topeka	Kansas Society of Association Executives
Topeka	Kansas State Historical Society
Topeka	National League of American Pen Women, Topeka Branch
Troy	Doniphan County Library District 1
WaKeeney	Trego Arts Council
Wamego	Wamego Senior Center
Waterville	Waterville Public Library
Wichita	Friends of Botanica
Wichita	Kansas Masonic Home
Wichita	LifeVentures
Wichita	Saints Alive After 55
Wichita	Senior Services of Wichita
Wichita	Ulrich Museum of Art
Wichita	University Club of Wichita
Wichita	Wichita Genealogical Society
Wichita	Wichita Public Library

TALK book discussions

43 Organizations

Arkansas City	Friends of Arkansas City Public Library
Ashland	Ashland Library
Atchison	Atchison Public Library
Augusta	Augusta Public Library
Baldwin City	Friends of Baldwin City Library
Basehor	Basehor Community Library
Bonner Springs	Bonner Springs City Library
Chanute	Friends of Chanute Public Library
Clay Center	Clay Center Carnegie Library
Council Grove	Friends of Council Grove Public Library
Dodge City	Dodge City Public Library
El Dorado	Butler Community College, Life Enrichment
Emporia	Emporia Public Library
Eureka	Friends of Eureka Public Library
Garden City	Finney County Public Library
Garnett	Garnett Public Library
Glasco	Glasco Arts & Humanities Council
Goodland	Goodland Public Library
Haysville	Haysville Community Library

Hill City	Graham County Public Library
Hutchinson	Hutchinson Public Library
Independence	Independence Public Library
Junction City	Dorothy Bramlage Public Library
Kansas City	Shepherd's Center of Kansas City
Kinsley	Kinsley Library
Lawrence	Lawrence Public Library
Lenexa	Lakeview Village Retirement Community
Manhattan	Manhattan Library Association
Meade	Meade Public Library
Mount Hope	Mount Hope Public Library
Newton	Newton Public Library
Ottawa	Ottawa Library
Overbrook	Friends of Overbrook Public Library
Overland Park	Overland Park Historical Society
Parsons	Parsons Public Library
Quinter	Friends of Jay Johnson Public Library
Saint John	Ida Long Goodman Memorial Library
Scott City	Scott County Library
Stafford	Stafford County Historical Society
Tonganoxie	Tonganoxie Public Library
Topeka	Brewster Place Retirement Community
Topeka	Topeka & Shawnee County Public Library
Ulysses	Friends of Grant County Library Foundation

FLIKS film discussions

5 Organizations

Fort Scott	Gordon Parks Center for Culture & Diversity
Lawrence	Lawrence Public Library
Lebo	Lebo Branch of Coffey County Library
Ottawa	Ottawa Library
Winfield	Winfield Public Library

Heritage Grants

8 Organizations

Alma	Wabaunsee County Economic Development
Emporia	William Allen White Historic Site
Kansas City	Granada Theater Website
Kinsley	Kinsley Library
Lawrence	Watkins Community Museum of History
Ottawa	Franklin County Historical Society
Seneca	Seneca Downtown Impact
Topeka	Topeka High School Historical Society

Humanities Grants (not supported by state funds)

26 Organizations

Bonner Springs	Wyandotte County Historical Museum
Chanute	Martin & Osa Johnson Safari Museum
Concordia	KU-Confucius Institute Edwards Campus
Eureka	Greenwood Preservation Society
Garden City	Finney County Historical Society
Hill City	Solomon Valley-Hwy 24-Heritage Alliance
Independence	William Inge Theatre Festival
Iola	Bowlus Fine Arts Center

Kansas City	Northeast Cooperative Council, Inc.
Larned	Santa Fe Trail Center
Lawrence	Friends of the Kaw
Lawrence	Haskell Cultural Center and Museum
Lawrence	Lawrence Arts Center
Lawrence	Robert J. Dole Institute of Politics
Lawrence	University of Kansas – CGIS
Manhattan	Kansas State University
McPherson	McPherson Opera House
North Newton	Kauffman Museum
Osawatamie	City of Osawatamie
Osborne	Sunflower State Book Festival Committee
Shawnee	Sociedad Hidalgo, Inc.
Topeka	Grace Episcopal Cathedral
Topeka	Kansas Network to Freedom
Topeka	Kansas State Historical Society, Inc.
Topeka	Railroad Heritage, Inc.
Wichita	KPTS TV

Short Film Grants

4 Organizations

Belle Plaine	Bartlett Arboretum
Florence	Florence Historical Society
Topeka	Jayhawk State Theatre of Kansas
Topeka	Justicia, Inc.

Kansas Tell Their Stories, a traveling KHC exhibition

7 Organizations

Collyer	Collyer Community Alliance
Concordia	National Orphan Train Complex
Fort Scott	Gordon Parks Center for Culture and Diversity
Garden City	Finney County Historical Society
Shawnee	Shawnee Town
Topeka	Great Overland Station
Wichita	Wichita Public Library, Central Branch

Journey Stories, a traveling Smithsonian Exhibition

2 Organizations

Atchison	Atchison County Historical Society
Colby	Prairie Museum of Art & History

Chautauqua, a 1-week continuing education experience

2 Organizations

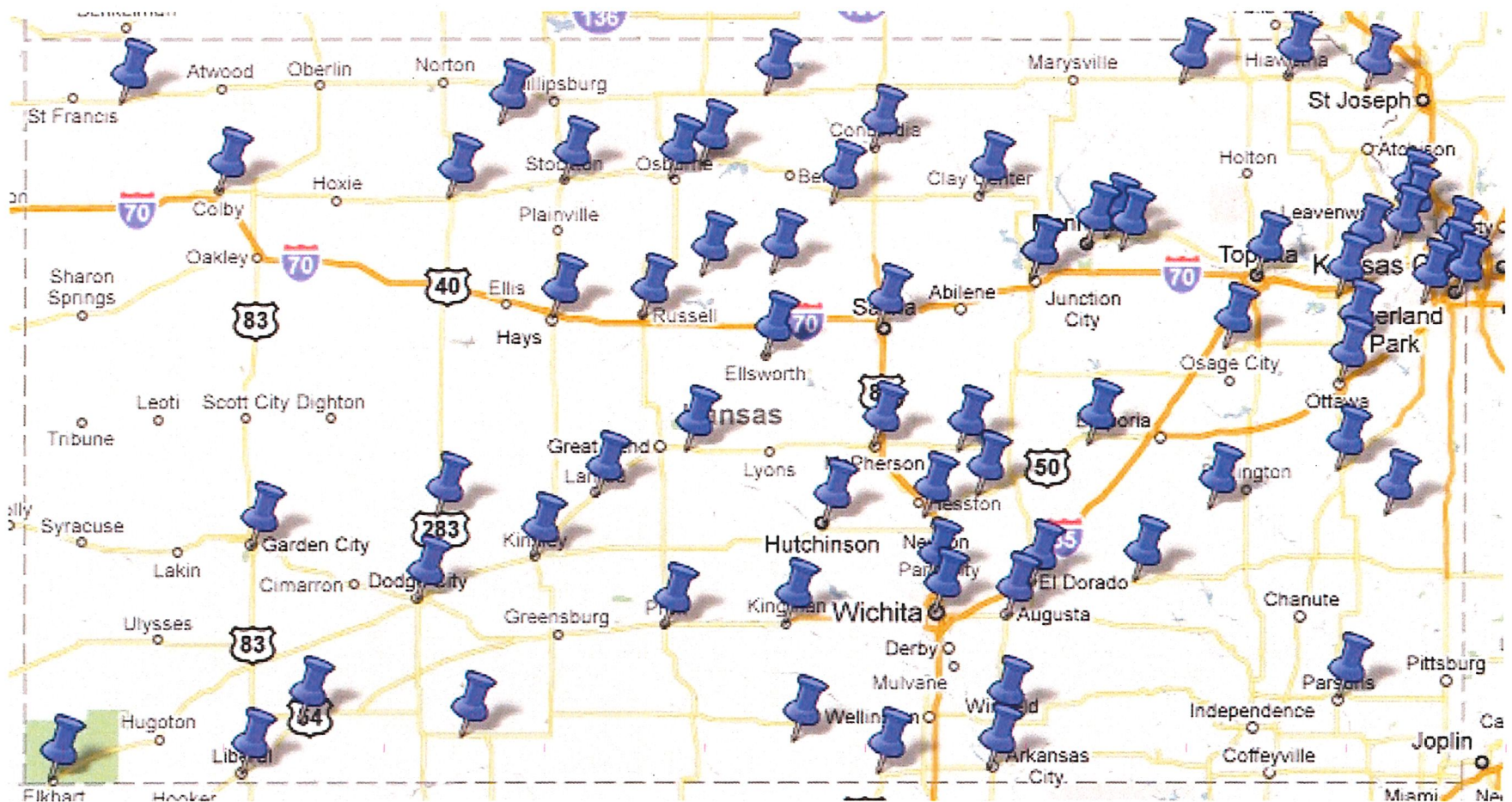
Belleville	Belleville Area Chamber of Commerce
Colby	Colby Convention & Visitors Bureau



Statehood Events Supported by the Kansas Humanities Council in 2011*

This map includes special speakers on Kansas history as part of the Speakers Bureau; book discussions on Kansas literature; film discussions about Kansas stories; the *Kansans Tell Their Stories* traveling exhibition; and special Kansas 150 grants.

As of February 4, 2011, 158 out of 289 listings on the ks150.gov website are supported by KHC.



*booked as of February 4, 2011



The 150th Anniversary of Kansas Statehood

How the Kansas Humanities Council Is Helping Communities

Contact: Julie Mulvihill, Executive Director
julie@kansashumanities.org or 785/357-0359

Who is the Kansas Humanities Council? *The Kansas Humanities Council is a non-profit organization that provides Kansans with the resources needed to provide quality cultural programs at home. Why are things like speaker presentations, book and film discussions, and museum exhibitions important? These types of programs provide ways for community members to come together to discuss topics of interest. These conversations often use the past – shared traditions, common values, personal experiences, current scholarship, and historical perspectives – as a way to make decisions about our lives today and invite ideas about our future. Find out more at www.kansashumanities.org.*

Statehood Resources

The Kansas Humanities Council has **READY-MADE PROGRAMS** like speaker presentations plus book and film discussions to support local Statehood activities.

The Special Statehood Edition Speakers Bureau features 71 presentations and discussions about Kansas – our people, places, hopes, and dreams. These stories offer insight into what it means to be a Kansan over time and across generations. Visit www.kansashumanities.org to download the catalog and booking form. These events are listed on the KS150 website. *The speakers and topics are available now through 2011 (or as funding allows).* The list of topics and presenters include:

- **Kansas Cuisine**, Roger C. Adams
- **Twisters: Living in Tornado Alley**, Jay Antle
- **The Little Blue Book Empire**, Jason Barrett-Fox
- **The Story of Nicodemus**, Angela O. Bates
- **From Agricultural Fields to Air Fields: Women Working in Kansas**, Ann Birney
- **Pieces of the Past: Kansas History and Prehistory**, Donald J. Blakeslee
- **Water and Kansas History**, Rex Buchanan
- **Harvey Girls: It All Started in Topeka**, Michaeline Chance-Reay
- **Trabajando en el Ferro Carril (Working on the Railroad)**, Gene T. Chavez
- **Pediments and Impediments: Kansas History Through Architecture**, Christy Davis
- **The Wyandotte Constitution and the Birth of the 34th Star**, Virgil W. Dean
- **John Brown's Raid and the Election of Abraham Lincoln**, Jonathan Earle
- **What Comes Next: Changes in Journalism**, Tom Eblen
- **Civil Rights in Kansas**, Gretchen Cassel Eick
- **Clarina Nichols and the Fight for Women's Rights**, Diane Eickhoff
- **Kansas Women in the Civil War**, Diane Eickhoff
- **Oceans of Kansas**, Michael J. Everhart
- **The Cherokee Strip Land Rush of 1893**, Heather Ferguson
- **The Changing Face of Kansas Immigration**, Ruben Flores
- **Kansans Remember World War II**, Rachel Waltner Goossen
- **Kansas Cattle Towns**, Jim Gray
- **Born Here: Kansas Aviation History**, Richard Harris
- **The Essential Eisenhower**, Daniel D. Holt
- **Orphan Trains in Kansas**, Marilyn J. Holt
- **The Pawnee Tribe in Kansas**, Chris Howell

- **Boots and Stetsons: The Kansas Cowboy**, Jim Hoy
- **Home on the Range: Kansas Folklore**, Jim Hoy
- **Kansas through the Lens of F. M. Steele**, Jim Hoy
- **Hurrah, Frei Kansas! Germans Struggle Against Slavery in KS Territory 1854-1861**, Bill Keel
- **The German Heritage of Kansas**, Bill Keel
- **Kansans in the Harlem Renaissance**, Marty Keenan
- **The March of the Amazon Army**, Linda O'Nelio Knoll
- **Community Baseball and the American Dream**, Fredrick A. Krebs
- **William Allen White's Heartland Values**, Frederick A. Krebs
- **Struggle and Resilience: Kansas during the Great Depression**, Lorraine Madway
- **Kansas Immigrants and Westward Migration**, Isaias J. McCaffery
- **Looking at Kansas: Visual Artists from the Sunflower State**, Ron Michael
- **Kansas and the Civil War in American History and Memory**, Brian Craig Miller
- **The Stars of Kansas**, Eric Monder
- **Liberty and Freedom in Bleeding Kansas**, Rita Napier
- **Folk Art in Kansas**, Erika Nelson
- **Monumental Sculpture in Kansas**, Erika Nelson
- **One Road, Many Stories**, Joan Nothorn
- **Kansas Military Forts**, Leo E. Oliva
- **You Be the Judge: The United States Supreme Court in Review**, Judge G. Joseph Pierron, Jr
- **The Plains Indians**, Erin Pouppirt
- **Beyond the Yellow Brick Road: Kansas on the Silver Screen**, Thomas Prasch
- **Settling the Sea of Grass: Many Communities, One State**, Jay M. Price
- **Black Newspapers and African-American Communities in Kansas**, Aleen J. Ratzlaff
- **Editorial Cartoons in the Black Press**, Aleen J. Ratzlaff
- **The Hand that Rocks the Cradle, Cradles the Rock**, J. Karen Ray
- **Fort Riley and World War I**, Sandra Reddish
- **Kansas Opera Houses and Community Events**, Jane Rhoads
- **Buffalo Hunters and the End of an Era**, Sara Jane Richter
- **The Land Breathes and Howls: Kansas Through the Lens of Poetry**, Susan Rieke, S.C. L.
- **Kansas Coal Fields**, Randy Roberts
- **The *Appeal to Reason* and Its Influence on America**, Randy Roberts
- **How Kansas Became *the* Wheat State**, Norman E. Saul
- **Understanding Native American Identity**, Jerry Shaw
- **Kansas Childhood Memoirs**, Margy Stewart
- **Traditional Dances in Contemporary Kansas**, Joan Stone
- **150 Years of the Kansas Beef and Beefpacking Industry**, Donald D. Stull
- **Our Food and Our Land**, Joyce Thierer
- **Still Headed for the Stars: Modern Challenges & Past Lessons**, Phillip D. Thomas
- **Against the Odds: Writers Growing Up Black in Kansas**, John Edgar Tidwell
- **Gordon Parks's *Learning Tree* Experience**, John Edgar Tidwell
- **Free Did Not Mean Welcome**, Carmaletta M. Williams
- ***Home's Just Around the Corner: Langston Hughes in Kansas***, Carmaletta M. Williams
- **Tumbleweed Tales of Amazing Kansans: Entrepreneurs in Rural Kansas**, Ron Wilson
- **Lincoln in Kansas**, William S. Worley
- **Railroads in Kansas**, William S. Worley

The Talk About Literature in Kansas (TALK) program features book series that spark discussions on traditions, heritage, and ideas. *Discussions held yearly during Fall & Spring.* Current Kansas-themed series include:

Kansas 150: Then and Now (NEW!!)

- *It Happened in Kansas*, a new overview of Kansas history by Sarah Smarsh
- *The Kansas Poems of William Stafford*, 2nd edition edited by Denise Low Weso

- *Now Let Me Fly*, a play about the Brown v. Board of Education decision by Marcia Cebulski
- *Ordinary Genius*, a collection of short stories by Thomas Fox Averill

Kansas Literary Heritage

- *The Learning Tree* by Gordon Parks
- *The Last Cattle Drive* by Robert Day
- *Picnic* by William Inge
- *Sod and Stubble* by John Ise
- *Trail of the Spanish Bit* by Don Coldsmith

Before the Civil War

- *The All-True Travels and Adventures of Lidie Newton* by Jane Smiley
- *The Englishman in Kansas* by Thomas H. Gladstone
- *John Brown: The Legend Revisited* by Merrill D. Peterson
- *Uncle Tom's Cabin* by Harriett Beecher Stowe
- *Waterlily* by Ella Cara Deloria

Literature with Kansas Connections

- *The Center of Everything* by Laura Moriarty
- *Not Without Laughter* by Langston Hughes
- *One Soldier's Story* by Bob Dole
- *The Slow Air of Ewan MacPherson* by Thomas Fox Averill

FLIKS is a brand-new facilitated film and discussion program. FLIKS programs are *discussions* that use short films as the starting point for community conversations. *Available for booking now (for as long as funding allows)*. Themes include:

There's No Place Like Home featuring

- *Cawker City Twine-A-Thon*, a light-hearted look at this unique Kansas event.
- *All That Remains*, an introspective look at the lessons passed down to our children.
- *Rebuilding Greensburg*, a story that reshapes our vision of home.

As Big As We Think featuring

- *Bauer, Baker & Baldwin City: Electrifying a Small Town's Identity* the story of how Baldwin City went "electric"
- *Mariachi Estrella: Ad Astra*, the story of Topeka's all-female mariachi band
- *Cessna: From the Ground Up*, a look at Kingman's aviation pioneer.

The Kansas Humanities Council has **ONLINE RESOURCES** available through the *Kansans Tell Their Stories* section of the Kansas Humanities Council website. This includes:

- Short films about Kansas told by the communities.
- Podcasts that tell the *Bleeding Kansas* story from local historical interpreters
- *StoryCorps* interviews done in Kansas.
- Information about the special "*Kansans Tell Their Stories*" traveling exhibition.
- Place for all Kansans to submit their own "**Kansas Story**."

The Kansas Humanities Council has **GRANTS** to support local heritage and humanities events and projects, like a new interpretive exhibition, heritage walking tour, or special symposium. **All guidelines found at www.kansashumanities.org.**

HERITAGE GRANTS

Amount: Up to \$3,500
Who Can Apply: Any non-profit organization in Kansas. Do not need 501c3 status.
Review Process: These grants are competitive. Three grant reviews are scheduled in 2011:
SPRING – Outlines due Feb 4 & final applications due Mar 4
SUMMER - Outlines due May 6 & final applications due June 3
FALL - Outlines due September 2 & final applications due October 7
Purpose: Heritage Grants support projects that preserve local history and encourage local historical organizations to plan their own future. This includes oral history projects, best practices in taking care of museum collections like photographs or quilts, the creation of guided tours or podcasts based in community history, as well as strategic planning and board training for historical organizations.
Example: The Leavenworth County Historical Museum created an 8-part podcast series using the Kansas Sampler Foundation's 8 Elements of Rural Culture.

HUMANITIES MAJOR GRANTS

Amount: Up to \$10,000
Who Can Apply: Any non-profit organization in Kansas. You do not need 501c3 status.
Review Process: These grants are competitive. Three grant reviews are scheduled in 2011:
SPRING – Outlines due Feb 4 & final applications due Mar 4
SUMMER - Outlines due May 6 & final applications due June 3
FALL - Outlines due September 2 & final applications due October 7
Purpose: Humanities grants connect people to the ideas, places, and events of the past and invite ideas about the future.
Example: The Wichita-Sedgwick County Museum received a grant in support of "Standing Up by Sitting In," a research, oral history, and exhibition project that told the story of Wichita's historic 1958 Dock-um Drugstore student sit-in that resulted in the desegregation of all Rexall lunch counters in Kansas.

HUMANITIES MINI GRANTS

Amount: Up to \$3,500
Who Can Apply: Any non-profit organization in Kansas. You do not need 501c3 status.
Review Process: No deadlines. Proposals submitted at least 6 weeks before first public event.
Purposes: Just like the Humanities Major Grants, these projects connect people to the ideas, places, and events of the past and invite ideas about the future.
Example: The Sunflower State Book Festival committee in Osborne hosted the first annual book festival to promote Kansas authors, small publishers, and others in the literary field and encourage greater awareness of Kansas literature.

SHORT FILM GRANTS

Amount: Up to \$10,000
Who Can Apply: Any non-profit in Kansas working with a filmmaker.
Review Process: These grants are competitive. Three grant reviews are scheduled in 2011:
SPRING – Outlines due Feb 4 & final applications due Mar 4
SUMMER - Outlines due May 6 & final applications due June 3
FALL - Outlines due September 2 & final applications due October 7
Purpose: Short Film grants are available in support of ~10-minute films that tell an unique and local Kansas story.
Example: The Topeka Jayhawk Theater is creating a short film that examines the historic state theater, defines its role in the Capital City's past, and considers how the resurrection of this venue might impact the both Topeka and the state.

Kansas Arts Commission
House Education Budget Testimony
Submitted by Llewellyn Crain, Executive Director
February 8, 2011

The Kansas Arts Commission, despite its 50% cut in state funds since Fiscal Year 2009, is one of the state's most successful agencies.

Nimble, responsive, and open, it has successfully distributed \$950,932 in grants in Fiscal Year 2011 to Kansas arts organizations throughout the state. In addition to its grant programs, the Kansas Arts Commission conducts extensive professional development services in business skills for artists and arts organizations, strengthening their capacities to contribute to their local economies.

Business leaders, convention and visitors' bureaus such as Visit Topeka, and Chambers of Commerce, along with thousands of individuals, have all expressed support for the Kansas Arts Commission as it is currently configured.

In Fiscal Year 2010, Kansans in all 105 counties were served by programs supported and sponsored by the Kansas Arts Commission. Since the beginning of the current fiscal year, we have conducted site visits and business consultations with 44 arts organizations and artists and have conducted four symposia and workshops and have planned for several more. We are currently sponsoring a business development seminar series for independent artists and worked closely with Mid-America Arts Alliance on an extensive professional development program for boards of directors and managers of arts nonprofit organizations. All this with a staff of six.

Now we are at a crossroads.

The Kansas Arts Commission has received the executive reorganization order, but we continue to request base level funding to maintain our current level of programming. We understand that this is not the Governor's recommendation, but this remains our request. The current Commissioners have not an opportunity to meet to discuss the proposal.

Current Funding

The state currently funds the Kansas Arts Commission with \$797,980, matched by \$778,200 from the National Endowment for the Arts. The Kansas Arts Commission receives these federal funds because:

- It is the designated state agency that promotes and supports the arts
- It engaged in an open, public planning process that was approved by the National Endowment for the Arts
- It has submitted a written plan that was approved by the National Endowment for the Arts

- It has the capacity – staffing and funds – to implement the plan and to be accountable for the plan’s implementation
- Funds from the National Endowment for the Arts are matched by funds from the state. Currently, the match is close to 1:1. However, if the state provides \$200,000, the most the arts agency can receive from the NEA is \$200,000 – but only if a submitted plan is approved by the NEA and that the state arts agency is determined to have sufficient resources to implement and be accountable for the plan. That means that Kansas will not receive the entire amount of funding for which it is eligible (a total of \$778,200 in FY 11).

Because of the partnership agreement with the National Endowment for the Arts and because it is a state arts agency, the Kansas Arts Commission is designated as a partner of the Mid-America Arts Alliance. This enables Kansas organizations to receive grants, programs and services valued at \$437,767 from Mid-America Arts Alliance.

Constituent organizations throughout the state have expressed concern about a private 501(c)3 Kansas Arts Council competing with them for scarce funds. Eighty-five percent of Kansas arts organizations report budget decreases during this recession and are having difficulty raising enough funds to do their programming and fund staff. A competing support organization would defeat its own purpose.

We ask that the legislature retain the Kansas Arts Commission as an agency of the state with base level funding to maximize federal dollars and to serve our state.

24 January 2011

Llewellyn Crain
Executive Director
Kansas Arts Commission
700 Southwest Jackson
Topeka, KS 66603



mid·america
arts alliance

More Art for More People.™

Dear Llewellyn,

As the executive directors of your partner state arts agencies of Arkansas, Missouri, Nebraska, Oklahoma, and Texas, we are writing to express our deep concern about the possible elimination of the Kansas Arts Commission as a fully functioning state arts agency of our region.

The Kansas Arts Commission is an important partner in the Mid-America Arts Alliance region. The grants and services you provide to communities throughout Kansas are critical to the vitality of the state's economic development and quality of life. This support is particularly crucial to even the smallest of arts organizations in your state. It's difficult for most large community leaders to understand that the small grants you are able to disperse throughout rural communities in your state really make or break the arts opportunities in those towns. By providing a \$3,000 annual grant, you are helping that museum, community theater, or library control its operating costs so that residents in that community can have affordable access to visual arts exhibitions and performing arts experiences, the things that help grow community values and pride.

The Kansas Arts Commission also makes an important impact on bringing art and artists to schools in this day of declining education budgets. There are school children across your state who would never have had an artist or performer inspire them to create and learn through creativity had it not been for the grants the Kansas Arts Commission provides for such activity each year.

Please know that even as we face difficult budget talks in each of our states, we are behind you, and we understand and believe in the impact of what the Kansas Arts Commission provides to underserved Kansans. As a group, our states are challenged by large geographic size and relatively small populations. For many years, the resources that we have collectively shared have not only been mutually beneficial, but cost effective.

Your state and our alliance will suffer tremendous loss if the Kansas Arts Commission and your leadership in the region is not restored.

Very sincerely yours,

Suzanne Wise
Executive Director
Nebraska Arts Council

Joy Pennington
Executive Director
Arkansas Arts Council

Suzanne Tate
Executive Director
Oklahoma Arts Council

Beverly Strohmeyer
Executive Director
Missouri Arts Council

Gary Gibbs
Executive Director
Texas Commission on the Arts

2018 Baltimore Avenue, Kansas City, Missouri 64108-1914 • (816) 421-1388 • FAX (816) 421-3918

www.maaa.org • www.eusa.org • www.nehontheroad.org

IN PARTNERSHIP WITH:
ARKANSAS ARTS COUNCIL, KANSAS ARTS COMMISSION, MISSOURI ARTS COUNCIL, NEBRASKA ARTS COUNCIL, OKLAHOMA ARTS COUNCIL, TEXAS COMMISSION ON THE ARTS,
THE NATIONAL ENDOWMENT FOR THE HUMANITIES, AND THE NATIONAL ENDOWMENT FOR THE ARTS