

MINUTES OF THE PUBLIC HEALTH AND WELFARE COMMITTEE

The meeting was called to order by Chairman Vicki Schmidt at 1:30 p.m. on February 3, 2011, in Room 546-S of the Capitol.

All members were present except:

Senator Mary Pilcher-Cook, excused

Committee staff present:

Nobuko Folmsbee, Office of the Revisor of Statutes  
Katherine McBride, Office of the Revisor of Statutes  
Melissa Calderwood, Legislative Research Department  
Iraida Orr, Legislative Research Department  
Carolyn Long, Committee Assistant

Conferees appearing before the Committee:

Paul Johnson, Kansas Rural Center  
Robert Siedlecki, Acting Secretary, Social and Rehabilitation Services

Others attending:

See attached list.

Bill Introductions

Mike Larkin representing the Kansas Pharmacists Association, requested legislation regarding pharmacy audits, Pharmacy Benefit Managers, and third party contractors. Moved by Senator Reitz, seconded by Senator Brumbargt. Motion carried.

Kevin Robertson from the Kansas Dental Association presented legislation regarding a comprehensive oral health policy package. Moved by Senator Kelsey, seconded by Senator Reitz. Motion carried.

The Chair thanked those who requested legislation and opened the hearing on **SB 5 – Board of Healing Arts; licensure of perfusionists.** After a brief explanation of the original bill, staff introduced a balloon amendment requested by the Kansas Perfusionist Society. The amendment adds the following language “person licensed to practice medicine and surgery” as an individual with the same qualifications as physicians as defined in the bill, raised the fee for license renewal, adds continuing education in Section 6, (a) and (b), strikes physician and changes the wording to person regarding the make-up of the perfusion council, addressed the assessed costs incurred by the board in conducting proceedings in which licensee is the unsuccessful party, adds the conviction of a Class A misdemeanor, addresses licensure disciplinary action and changes practicing from “more than 24 months” to “two of the last ten years” in order to be consistent throughout the bill. After questions from the committee it was moved by Senator Kelsey to adopt the two balloons, seconded by Senator Brungardt. Motion carried. It was further moved by Senator Kelsey that SB 5 be passed out favorably as amended, seconded by Senator Reitz. Motion carried.

The Chair then recognized Paul Johnson from the Kansas Rural Center. Mr. Johnson said the Center supports a study on the opportunities/barriers to expanding the production and consumption of locally grown food to improve the diet and reap the economic benefits for rural communities and the state (Attachment #1). Mr. Johnson also told about the Rolling Prairie Farmers Alliance (Attachment #2) and how they hope to expand the Alliance to Topeka. The Chair thanked Mr. Johnson for the information he shared with the community.

Mr. Robert Siedlecki, Secretary-Designee, Department of Social and Rehabilitation Services was introduced by the Chair. Mr. Siedlecki gave an Agency Overview (Attachment #3) which included the major programs served by SRS. These were Addiction and Prevention Services, Mental Health Services, Community Supports and Services, State Mental Health Hospitals, and Children and Family Services. After some questions by members of the committee regarding the type of impact Mr. Siedlecki felt he could have, the Chair thanked him for his appearance.

The meeting adjourned at 2:30 p.m.

The next meeting is scheduled for February 7, 2011.

# SENATE PUBLIC HEALTH AND WELFARE COMMITTEE GUEST LIST

DATE: February 3, 2011

[illegible]

**KANSAS SENATE PUBLIC HEALTH & WELFARE COMMITTEE**  
**Paul Johnson – Kansas Rural Center – February 3, 2011**

**FARMERS MARKETS & LOCAL FOOD POLICY**

Thank you for this opportunity to present some information on local foods and farmers markets. I will reserve the majority of the time for Kansas Rural Center's 'farmers markets expert' Mercedes Taylor-Puckett but I do want to highlight a few facts and studies on local foods in Kansas.

The good news is that the interest in better nutrition and local foods has increased the last few years. The bad news is that Kansas has room for much improvement in our diets. The Center for Diseases Control issued a report on the consumption of fruits and vegetables in the 50 states in 2009. The standard of a healthy diet is two servings of fruit and three servings of vegetables daily. Only 10.6% of Kansas' adults meet that standard and 10.1% of Kansas' children.  
<http://www.fruitsandveggiesmatter.gov/downloads/StateIndicatorReport2009.pdf>  
There is now a Food Environment Atlas available for many food and health indicators by county. <http://maps.ers.usda.gov/FoodAtlas/>

The Kansas Rural Center is interested in better nutrition with locally grown fruits and vegetables. USDA estimates that a Kansan will spend just under \$200 a year on produce so the total for Kansas is right at \$525 million. Today 97% of that \$525 million (\$509 million) is imported while just \$16 million is locally grown. Dr. Rhonda Janke from Kansas State University compiled this data.  
<http://www.ksre.ksu.edu/rff/Economic%20Potential.pdf>  
Comparable data for local, natural meats and small dairies could be assembled.

The Leopold Center for Sustainable Agriculture at Iowa State University has done some of the best local foods economic analysis in the country. They developed a comprehensive Iowa Farm and Food Plan for the Iowa Legislature. They estimate that 14% of food consumed in Iowa is local. If Kansans were buying 14% of their food locally that would be \$784 million reverberating thru our economy.  
<http://www.leopold.iastate.edu/foodandfarmplan.html>

The Kansas Rural Center supports a study on the opportunities/barriers to expanding the production and consumption of locally grown food to improve the Kansan diet and reap the economic benefits for rural communities and the state.



## SITE COORDINATORS

Please mail your subscription form to the site coordinator for the site you choose.

LAWRENCE REGULAR BAG  
COMMUNITY MERCANTILE  
9TH & IOWA

MONDAYS 4:00-6:30 PM

Coordinator: Bob Lominska, 1954 Union Rd, Lawrence, KS  
66044, (785) 842-5697, [rlominska@wildblue.net](mailto:rlominska@wildblue.net)

LAWRENCE ECONOMY BAG  
LOCAL BURGER  
714 VERMONT

THURSDAYS 4:00-6:00 PM

Coordinator: Paul Johnson, 3960 Ridge Dr., Perry KS 66073  
(785) 597-5858, [pdjohnson@wildflower.net](mailto:pdjohnson@wildflower.net)

JOHNSON CTY COMMUNITY COLLEGE  
HORTICULTURE SCIENCE CENTER  
WEDNESDAYS 4:00-6:00 PM

Coordinator: Stu Shafer, 3213 Buck Creek Rd, Oskaloosa KS,  
66066 (785) 691-5006, [sandheron@rollingprairie.net](mailto:sandheron@rollingprairie.net)

ROELAND PARK COMMUNITY CENTER  
4850 ROSEWOOD DRIVE  
WEDNESDAYS 4:30-6:30 PM

Coordinator: Paul Conway, 25476 183rd St., Leavenworth, KS  
66048 (913) 775-2559, [pconway@wildblue.net](mailto:pconway@wildblue.net)



ROLLING PRAIRIE FARMERS ALLIANCE

2011

## ROLLING PRAIRIE FARMERS ALLIANCE

SEASONAL PRODUCE SUBSCRIPTION  
SERVICE



From the farmer to you,  
directly

Rolling Prairie is the oldest Midwest vegetable cooperative. The original group of farmers joined together in 1994, providing a vegetable subscription service to Lawrence and Kansas City. Over 300 households receive a weekly bag of locally grown produce during the growing season. While not all of our farms are currently certified organic, we still follow the same natural, ecologically sustainable, organic practices for growing food we have used since we started seventeen years ago.

Website: <http://www.rollingprairie.net>

Senate Public Health and Welfare  
Date 2-3-2011  
Attachment 2



## HOW DOES IT WORK?

Every week during the growing season (usually May through October) we deliver a bag of freshly harvested produce to you. You choose which of our four pick-up sites is best for you. The regular bag (at the Community Mercantile, JCCC, and Roeland Park Community Center) typically includes portions of 6-8 produce items and is good for a household of 3-4 people. The economy bag (at Local Burger in Lawrence only) includes smaller portions of 5-7 items, appropriate for smaller households. We offer a discount on the purchase of two weekly bags. There are usually several choices of seasonal items (say, between carrots and beets, or between summer squash and cucumbers). All the produce is washed and bunched. We encourage you to bring your own reusable bag each week.

Subscribers pay a deposit to secure their share for the season. New subscribers pay \$10 more in their deposit, which gets them a copy of Nancy O'Connor's *Rolling Prairie Cookbook*. The deposit covers some of our administrative expenses, but the rest is credited toward your last three weeks of the season.

## WHAT ABOUT VACATIONS?

Members can cancel twice per season without paying for those bags, provided they give 3 days advance notice for their vacation days. If you must miss more than that, we suggest you have a friend or family member pick up your bag.

If you forget to come and pick up your produce, we will try to donate your share to a local charity. We *must still charge you for the produce we bring for you.*

## WHY AN ALLIANCE?

As a cooperative, we benefit from different conditions on different farms. If one farm gets frosted, flooded, hailed out, or dried up, chances are the others can take up the slack. We become more efficient in marketing, which leaves us more time to work on growing food ecologically.

# 2011 ROLLING PRAIRIE MEMBERSHIP FORM

Please read the following. If you agree, sign and mail the completed form with your deposit check made out to Rolling Prairie to the Site Coordinator for the site where you choose to pick up your bag (addresses on reverse side of this brochure). New subscribers pay a \$85 deposit and receive a copy of our Rolling Prairie cookbook. Previous subscribers pay a deposit of \$75.

I have read the information on the Rolling Prairie web page and understand that I am responsible for picking up my bag each week. I understand the price of each weekly bag is \$17 (\$14 for the economy bag at Local Burger) including sales tax, or \$32 for two regular bag shares, \$28 for two economy bag shares. I also understand that I will be billed monthly with payment due on the first pickup each month. I also understand that my membership is not activated until the site coordinator receives my deposit check. I understand that the equivalent of three weeks' bags will be applied towards my last bill, with the remainder to cover a portion of the operating expenses of Rolling Prairie Farmers Alliance.

Name \_\_\_\_\_

Which pick up site would you like to use?  
\_\_\_\_\_

Street \_\_\_\_\_

Are you a returning member? \_\_\_\_\_

City, St, Zip \_\_\_\_\_

How many weekly shares? 1 regular: \$17    2 regular: \$32  
1 economy (Lawrence only): \$14    2 economy: \$26

Email \_\_\_\_\_

How did you hear about Rolling Prairie?  
\_\_\_\_\_

Home phone \_\_\_\_\_

### For Lawrence area subscribers:

Would you like to participate in the Early Bag (mid-April until first regular pick-up in May)? \_\_\_\_\_

Other phone (cell? work?) \_\_\_\_\_

The Late Bag (last regular pick-up until the end of Nov.):  
\_\_\_\_\_

Signature \_\_\_\_\_

Note: Early Bag and Late Bag are regular bags (\$17 per week)

Comments or questions?  
\_\_\_\_\_



## Agency Overview

Rob Siedlecki, Secretary



DEPARTMENT OF SOCIAL  
AND REHABILITATION SERVICES

**M**ission  
To protect children and  
promote adult  
self-sufficiency

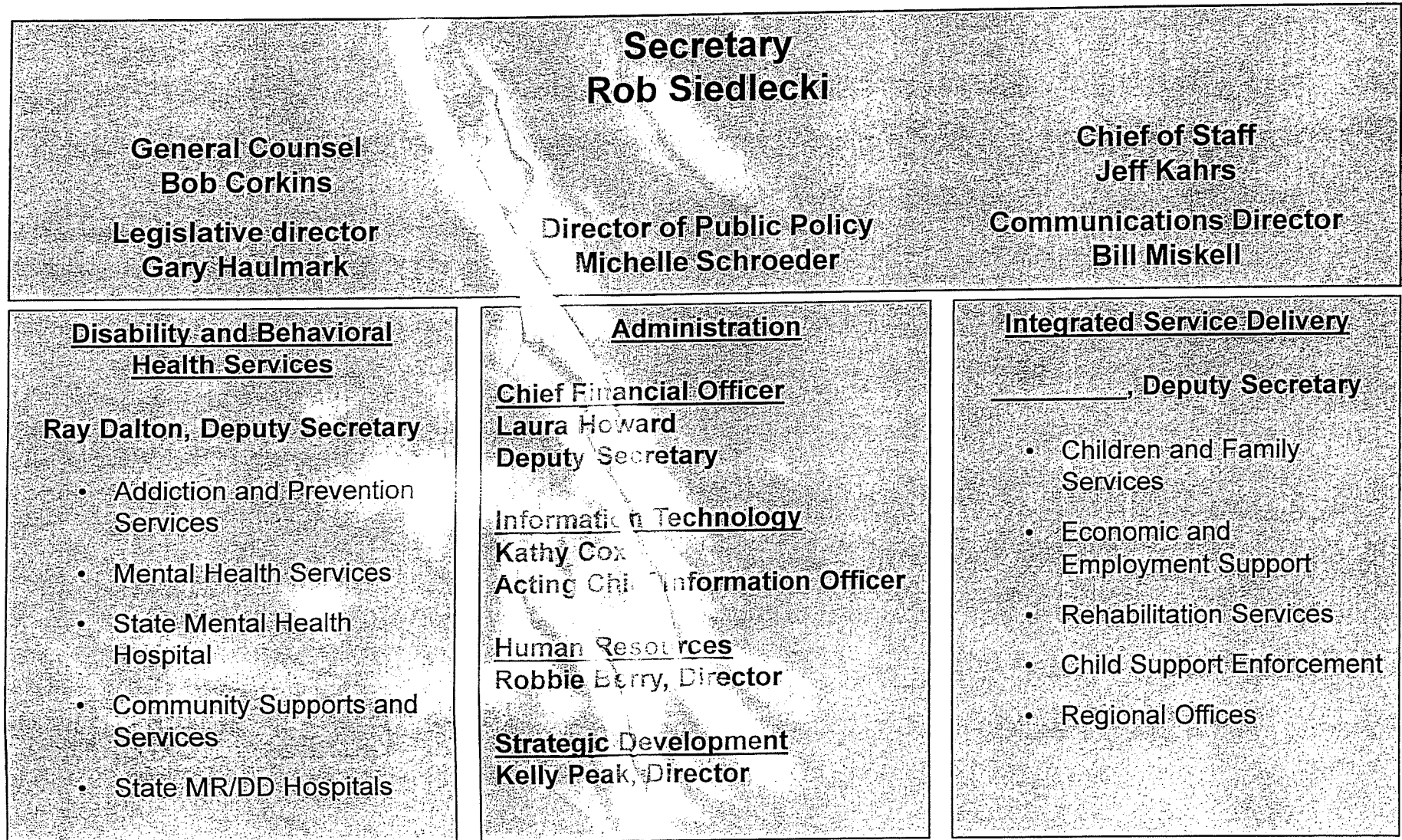
**V**ision  
Partnering to connect Kansans  
with supports and services to  
improve lives

## **Rob Siedlecki Jr., Secretary of Social and Rehabilitation Services (SRS)**

Rob Siedlecki has more than 15 years of public and private sector leadership experience at the local, state and federal levels. He worked for four years in the federal government's Administration for Children and Families which oversees more than 60 programs, including Head Start, the Healthy Marriage Initiative, runaway and homeless youth programs, and the Temporary Assistance for Needy Families (TANF) program. He served as chief of staff for the Florida Department of Health which has 17,000 employees and an annual budget of nearly three-billion dollars.



# Organization



## SRS Leadership Team – Contact Information

**Rob Siedlecki**  
**Secretary**  
296-3271

**Jeff Kahrs**  
**Chief of Staff**  
296-3271

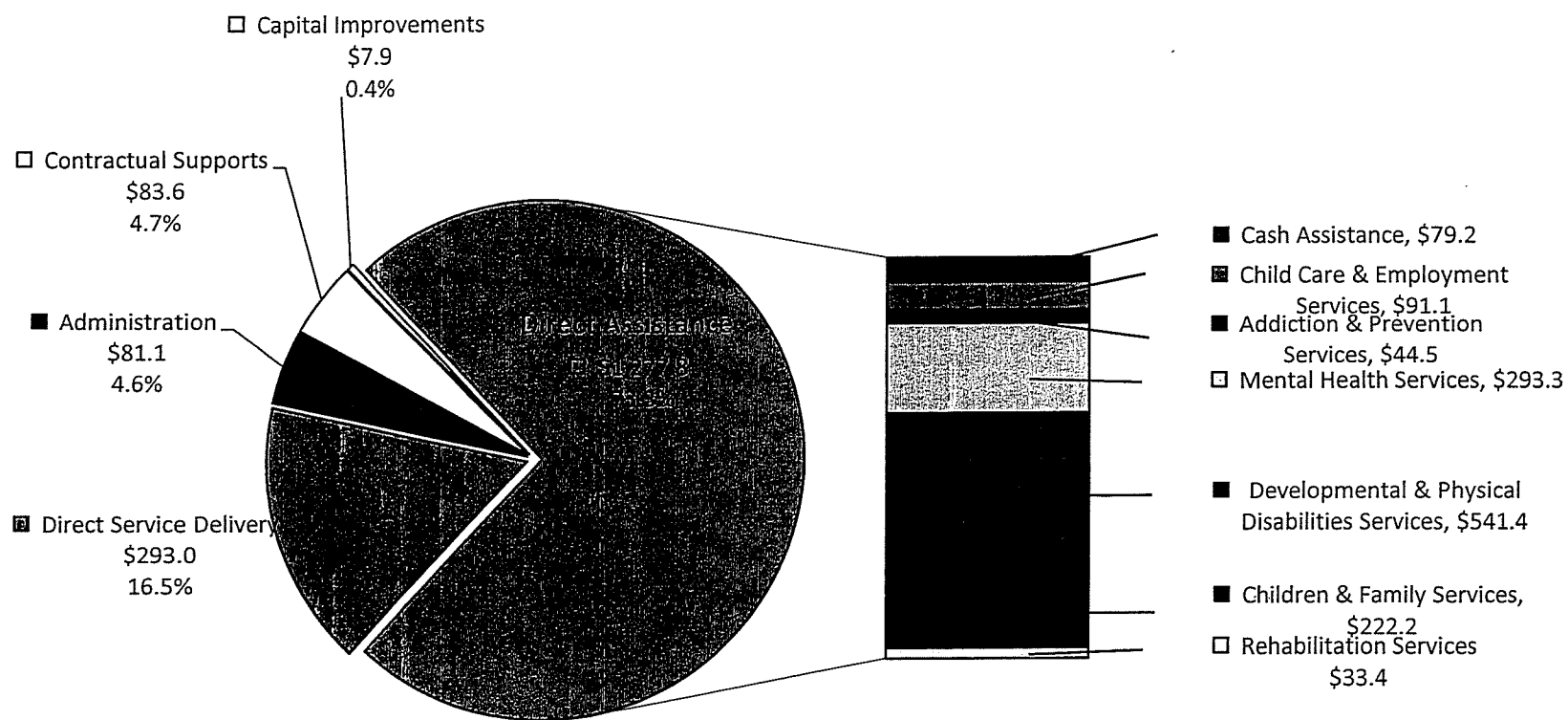
**Bob Corkins**  
**General Counsel**  
296-3967

**Michelle Schroeder**  
**Public Policy Director**  
291-3629

**Bill Miskell**  
**Communications Director**  
296-3271

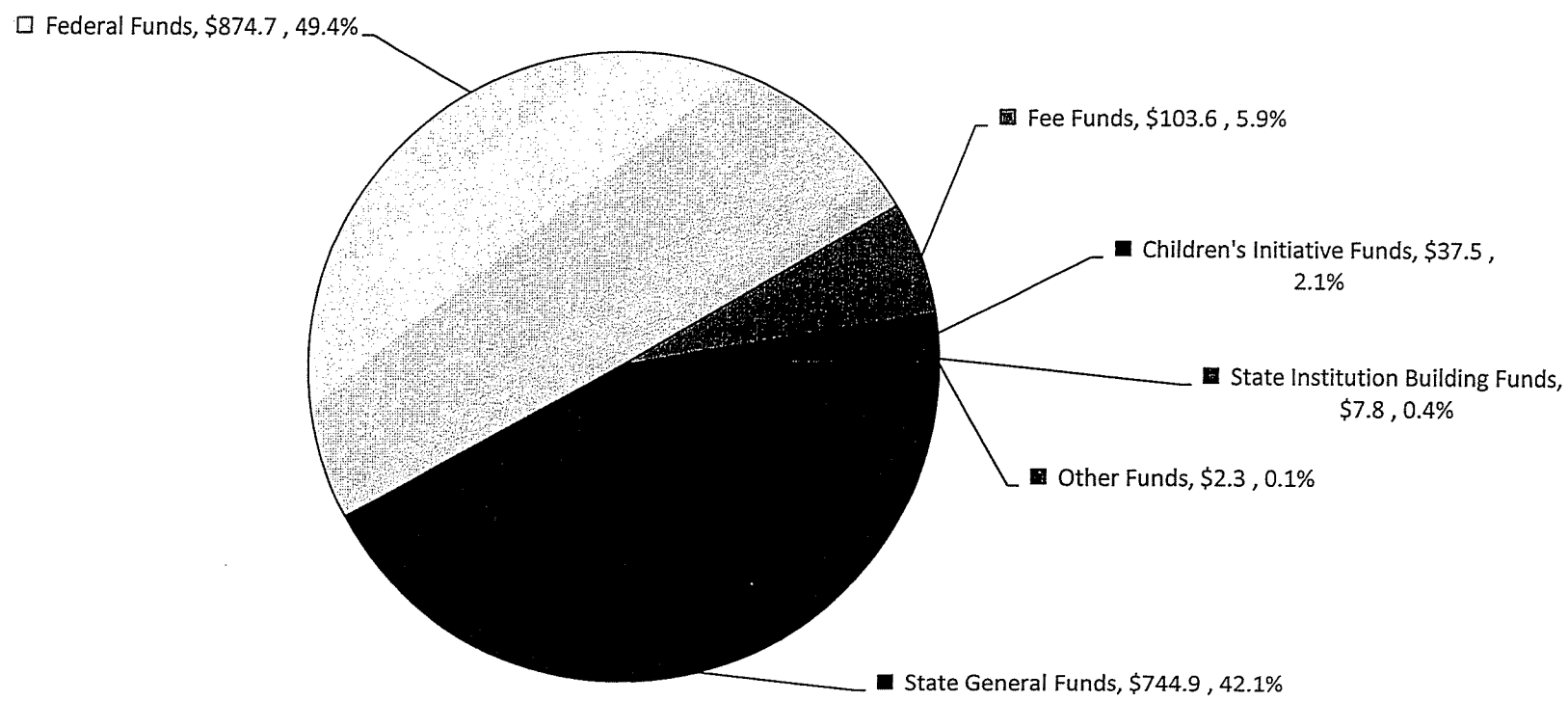
**Gary Haulmark**  
**Legislative Director**  
296-3271

# FY 2012 SRS Governor's Budget Recommendations including State Hospitals Expenditures (in millions)



**Total Budget \$1,770.8 million**

# FY 2012 SRS Governor's Budget Recommendations including State Hospitals Funding (in millions)



**Total Budget \$1,770.8 million**



## Expenditures and Persons Served By Program

	SFY 2011 GBR		SFY 2012 GBR	
SRS Program	Total Program Expenditures	People Served	Total Program Expenditures	People Served
Addiction and Prevention Services	46,126,718	284,270	48,052,591	295,259
Mental Health	332,141,594	105,836	326,657,585	88,554
Community Supports and Services	555,445,668	44,674	554,086,726	42,439
Children and Family Services	196,053,123	76,237	205,852,310	76,656
Economic and Employment Support	222,285,712	531,707	187,380,976	578,436
Rehabilitation Services	47,536,160	69,186	47,286,360	70,610
Child Support Enforcement	28,055,085	125,848	29,404,640	125,260
<b>State Hospitals</b>				
Mental Health	95,098,739	715	96,565,928	716
Developmentally Disabled	54,505,193	345	54,606,965	330
Note: People served could be duplicated between programs.				

## Summary of SRS, Children's Cabinet, and State Hospital Budget Adjustments

- The Governor added funding for the increases in all of the entitlement caseload programs
- State General Funds were added in the Governor's budget to replace the loss of federal funds because of lower than anticipated extended FMAP in FY 2011 and decline in the base FMAP in 2012
- The Governor added State General Funds to replace fee fund and maintain the current level of service in the Home and Community Based Service Waivers
- Overall the budgets were reduced approximately 1.5 percent in FY 2012 over FY 2011
- Reductions were made to the Developmental Disabilities Day and Residential Grants, Kansas Early Head Start Program, General Assistance Program, and Mental Health State Aid Grants.

## Summary of SRS, Children's Cabinet, and State Hospital Budget Adjustments

- Because of declining tobacco revenues, Children's Initiative Fund reductions occurred in Family Centered Systems of Care, Children's Cabinet Early childhood Block Grant, Children's Cabinet Accountability Fund and Children's Cabinet Smart Start in FY 2011
- Salary reductions and elimination of vacant positions were made in SRS, Osawatomie State Hospital, and Rainbow Mental Health Facility.
- Increased Expanded Lottery Act Revenue will provide additional funding for the Problem Gambling and Addictions Grant Fund
- Savings was captured in FY 2012 to begin the closure of KNI
- \$6.0 million Children's Initiative Funds were added for the new Reading Roadmap Program
- Children's Initiative Fund reductions occurred in Children's Cabinet Smart Start and CIF funding was discontinued for the Family Centered System of Care

# Addiction and Prevention Services

*Partnering to Promote Prevention and Recovery in Kansas Communities*

- Substance Use Disorders
  - Prevention
    - Reduce underage drinking
    - Reduce underage access to tobacco (Synar amendment)
    - 13 Regional prevention Centers work
  - Treatment
    - Managed Care
    - Block grant and Medicaid funds
    - 4<sup>th</sup> time DUI program (KDOC MOU)
- Problem and Pathological Gambling
  - Problem Gambling and Addiction Fund
    - Problem Gambling Treatment
    - “Other Addiction” Services gaps



# Mental Health Services

*Treatment and support for Kansans with mental illness that ensure they experience recovery and live successful lives in the community*

- **Community Mental Health Center Grants**
  - Support CMHC infrastructure (e.g., 24 hour crisis response)
  - Serve people without the means to pay for treatment
- **Medicaid Mental Health Managed Care**
  - Serve All Kansans on Medicaid
  - HCBS Waiver for Children with a serious emotional disturbance
- **In-patient and Residential Treatment**
  - Psychiatric Residential Treatment Facilities: Residential treatment for children with a serious emotional disturbance
  - Community Hospitals: An alternative to state mental health hospitals for all children and some adults
- **Nursing Facilities for Mental Health**
  - Residential treatment for adults with severe and persistent mental illness
- **Consumer run and consumer support groups**
  - Consumer Run Organizations and Consumer Advisory Council
  - NAMI and Keys for Networking

# State Mental Health Hospitals

*Inpatient psychiatric treatment for Kansans experiencing severe mental health symptoms determined a danger to themselves or others, and forensic mental health services*

- **Osawatomie State Hospital**
  - Provides acute inpatient treatment for adults with mental illness.
  - SPTP Transition Program
- **Rainbow Mental Health Facility**
  - Provides primarily short-term, acute inpatient treatment for adults with mental illness
- **Larned State Hospital**
  - Psychiatric Services Program - provides inpatient treatment to children, adolescents and adults
  - State Security Program - provides evaluation, competency restoration and inpatient treatment for forensic patients
  - Sex Predator Treatment Program

# Community Supports and Services

*Provide resources and support to help Kansans with disabilities  
live self-directed lives in their community*

- Transition from facilities to the community
  - Money Follows the Person grant
- Medicaid waivers for home and community based services
  - Physical Disability Waiver
    - › Serves individuals age 16-65 who would otherwise require institutionalization in a nursing facility
  - Mental Retardation/Developmental Disability Waiver
    - › Provides community based services for individuals age 5 and up who otherwise would be eligible for placement in an intermediate care facility
  - Traumatic Brain Injury Waiver
    - › Serves individuals age 16-64 who have a traumatically acquired, non-degenerative, structural brain injury
  - Technology Assisted Waiver
    - › This program assists children, age 0-21 years who are chronically ill and medically fragile and dependent upon a life-sustaining medical device to compensate for loss of a vital body function
  - Autism Waiver
    - › An early, intensive intervention service targeting children up to age 5 who would otherwise be served in a state mental health hospital

# Waiver Waiting Lists

as of January 1, 2011

		Cost to Eliminate list *	
		All Funds	SGF
Physical Disability (PD) Waiver	2,771	\$ 56,894,172	\$ 24,214,160
Developmental Disability (DD) Waiver **	3,391	\$ 114,364,653	\$ 48,673,596
Autism Waiver	264	\$ 4,976,928	\$ 2,118,181
Traumatic Brain Injury (TBI) Waiver		No wait list	
Serious Emotional Disturbance (SED) Waiver		No wait list	
<b>Total</b>	<b>6,426</b>	<b>\$ 176,235,753</b>	<b>\$ 75,005,937</b>
* The cost to eliminate the waiting list is based on the assumption the list is eliminated all at once on the first day of the fiscal year.			
** The total includes both individuals who are unserved (2,383) and underserved who are waiting for additional services (1,008).			



# Private/Public Intermediate Care Facilities

*Residences for Kansans with disabilities who require intensive supports*

- State Mental Retardation/Developmental Disability Hospitals
  - Kansas Neurological Institute
    - › 98% of residents are severely to profoundly mentally retarded and require intensive medical supports
  - Parsons State Hospital and Training Center
    - › 86% of residents present with behavioral challenges or symptoms of emotional disturbance and require more intensive supports
- Private Intermediate Care Facilities (ICFs/MR)
  - Funded by Medicaid, these facilities serve individuals who need continuous, intensive services.
  - They work closely with community developmental disability organizations to arrange supports and services when the individual is ready to live more independently

# Children and Family Services

*Protect children from abuse and neglect, provide in-home services to preserve families, and seek safe, permanent homes for children*

- **Prevention Efforts**
  - Grants for community services to avoid abuse and neglect and promote good parenting
- **Child Protective Services**
  - Investigate reports of alleged abuse and neglect
- **Family Preservation Services**
  - Intensive in-home services that seek to keep families together
- **Permanency**
  - Foster care, reintegration and adoption services. After court-ordered removal, 95% of children are placed in a family-like setting. Assistance may be offered for adoption or permanent custodianship.

# Economic and Employment Support

*Promote self-sufficiency by assisting individuals and families  
to prepare for and maintain gainful employment*

- Support Employment
  - Temporary Assistance for Families
    - › Provides training and work experience for participants and up to 60 months of cash assistance.
  - Child Care Assistance
    - › Provides support to working families who need childcare
- Provide Economic Assistance
  - General Assistance/MediKan
    - › Provides cash and medical assistance to disabled Kansans waiting for federal disability determination
  - Food Stamps
    - › Helps low-income persons buy food with an electronic benefit card
  - Low Income Energy Assistance Program
    - › Provides assistance to keep homes heated and helps weatherize dwellings
  - Food Distribution Programs
    - › Provide foodstuffs to charitable institutions, soup kitchens and, in emergencies, directly to consumers
- Protect Vulnerable Adults
  - Adult Protective Services
    - › Investigate reports of alleged abuse, neglect, and exploitation

# Rehabilitation Services

*Support Kansans with disabilities in gaining and keeping employment,  
and determine medical eligibility for federal disability programs*

- Vocational Counseling and Guidance
- Education and Training
- Job Placement and Supported Employment
  - Contract for services that support people seeking employment
- Disability Determination Services
  - Determine medical eligibility for Social Security Disability Insurance and Supplementary Security Income



# Child Support Enforcement

*Promote self-sufficiency by facilitating receipt of child support payments*

- Establish paternity
- Establish and modify financial and medical support orders
- Collect and disburse support payments
  - Enforce income withholding and court actions

# Upcoming Initiatives

- **Healthy Marriage Initiative**
  - Reviewing disincentives to marriage in existing programs
- **Fatherhood Initiative**
- **Outreach to Faith-Based Community Organizations**

3-22

# Summary of Expenditures & Persons Served

Annual Expenditures in Millions

	Caseload Unit	SFY 2010		SFY 2011 GBR		SFY 2012 GBR	
		Expenditures	Persons Served	Expenditures	Persons Served	Expenditures	Persons Served
<b>Addiction and Prevention Services</b>							
Substance Abuse Prepaid Inpatient Health Plan (PIHP) (Medicaid)	Annual Persons Served	22,703,893	6,245	19,547,006	269,243	21,146,617	279,717
Addiction And Prevention Services Grants	Annual Persons Served	21,992,929	14,349	22,285,029	15,027	22,583,688	15,542
<b>Mental Health</b>							
Mental Health Prepaid Ambulatory Health Plan (PAHP) for Medicaid & Medikan	Annual Persons Served	192,392,167	55,642	206,496,300	26,993	213,851,200	27,802
Mental Health State Aid Grants	Annual Persons Served	10,233,297	15,492	10,233,297	15,492	-	
Mental Health Consolidated and Other Grants	Annual Persons Served	21,928,669	62,179	21,286,684	62,179	20,967,747	59,553
Psychiatric Residential Treatment Facilities	Average Monthly Persons	42,172,359	648	48,803,700	575	51,148,800	592
Nursing Facilities For Mental Health	Average Monthly Persons	15,814,601	602	18,562,101	597	18,742,269	607
<b>State Hospitals</b>							
Larned State Hospital (LSH)	Average Daily Census	43,432,561	282	43,177,198	273	44,190,028	273
LSH Sexual Predator Treatment Program	Average Daily Census	12,869,468	202	14,361,750	219	14,659,547	219
Osawatimie State Hospital	Average Daily Census	29,125,352	171	28,921,397	174	29,004,672	174
Rainbow Mental Health Facility	Average Daily Census	8,753,096	47	8,638,394	49	8,711,681	50
Kansas Neurological Institute	Average Daily Census	28,592,019	157	29,075,527	157	28,776,909	142
Parsons State Hospital	Average Daily Census	25,496,871	186	25,435,823	188	25,836,213	188

3-22

# Summary of Expenditures & Persons Served

Annual Expenditures in Millions

	Caseload Unit	SFY 2010		SFY 2011 GBR		SFY 2012 GBR	
		Expenditures	Persons Served	Expenditures	Persons Served	Expenditures	Persons Served
<b>Community Supports and Services</b>							
Develomental Disability Waiver	Average Monthly Persons	310,923,343	7,669	315,345,282	7,787	315,096,190	7,858
Physical Disability Waiver	Average Monthly Persons	140,511,924	6,964	125,337,423	6,648	125,261,169	6,674
Traumatic Brain Injury Waiver	Average Monthly Persons	13,085,895	323	13,500,085	350	14,904,469	383
Technology Assistance Waiver	Average Monthly Persons	25,053,641	378	25,312,761	420	27,480,950	456
Autism Waiver	Average Monthly Persons	752,930	40	1,207,726	45	1,233,120	47
Develomental Disability Targeted Case Management	Average Monthly Persons	16,797,027	8,954	17,472,000	9,100	17,561,951	9,147
Physical Disability Targeted Case Management	Average Monthly Persons	5,055,523	5,201	5,140,800	5,100	5,140,800	5,100
Positive Behavior Supports	Average Monthly Persons	73,070	15	101,760	20	101,760	20
Head Injury Rehabilitation Hospitals	Average Monthly Persons	10,047,478	40	11,352,000	43	11,500,000	44
Private Institutional Care Facilities for Mental Retardation (ICF/MRs)	Average Monthly Persons	13,606,580	171	14,372,110	171	14,268,438	170
Develomental Disabilities State Aid	-	5,163,174	-	5,163,174	-	5,163,174	-
Developmental Disabilities Direct Service Grants	Annual Persons Served	3,596,190	2,612	3,596,190	2,450		
Community Developmental Disability Organization Administration	Annual Persons Served	7,951,038	12,285	9,466,441	12,540	9,358,265	12,540

# Summary of Expenditures & Persons Served

Annual Expenditures in Millions

Children and Family Services	Caseload Unit	SFY 2010		SFY 2011 GBR		SFY 2012 GBR	
		Expenditures	Persons Served	Expenditures	Persons Served	Expenditures	Persons Served
Family Preservation Services	Annual Families	10,583,869	2,751	10,179,277	2,622	10,179,277	2,551
Child Abuse/ Neglect Reports	Annual Reports	*	55,730	*	55,275	*	55,275
Foster Care/Reintegration	Average Monthly Children	132,556,160	4,854	139,000,000	5,094	144,450,000	5,218
Adoption Support	Average Monthly Children	31,921,713	7,180	29,390,446	7,566	34,036,311	7,919
Permanent Custodianship	Average Monthly Children	1,228,379	351	1,277,192	359	1,331,642	372
Independent Living Subsidy	Annual Youth	1,606,372	779	1,908,189	931	1,908,189	931
Child Welfare Community Funding	Annual Children	1,877,988	3,798	1,963,203	3,970	1,963,203	3,970
Family Services	Annual Families	1,498,604	394	1,596,881	420	1,596,881	420
Child Support Enforcement (CSE)							
Child Support Collections (not an expenditure)	Average Monthly Cases	194,851,435	127,132	196,525,151	125,848	199,418,856	125,260
CSE Enforcement Contracts	-	11,652,318	-	11,602,318	-	12,491,865	-
Kansas Payment Center	-	4,699,393	-	4,605,994	-	4,970,722	-
CSE Customer Service Center	-	1,522,811	-	1,762,626	-	1,763,307	-

\* Expenditures for child abuse/neglect investigations are included in other budget categories

# Summary of Expenditures & Persons Served

Annual Expenditures in Millions

	Caseload Unit	SFY 2010		SFY 2011 GBR		SFY 2012 GBR	
		Expenditures	Persons Served	Expenditures	Persons Served	Expenditures	Persons Served
Economic & Employment Support							
Adult Protective Services	Annual Persons Served	277,734	7,817	380,000	8,442	380,000	8,442
Child Care Assistance	Average Monthly Children	78,551,063	20,319	75,254,917	20,500	79,021,600	21,550
Kansas Early Head Start	Average Monthly Children	11,342,397	1,177	11,342,397	1,177	-	-
Temporary Assistance for Families (TAF) Employment Services	Average Monthly Adults	11,771,436	12,510	12,042,333	12,789	12,042,333	13,137
Supplemental Nutrition Assistance Assistance Program (SNAP) Employment & Training	Average Monthly Persons	92,199	157	107,438	190	107,436	190
Food Assistance	Average Monthly Persons	383,275,641	259,609	462,234,076	305,800	540,049,021	352,000
TAF Cash Assistance #	Average Monthly Persons	56,587,914	36,972	60,522,527	40,551	57,500,000	42,783
Low Income Energy Assistance Program (LIEAP)	Annual Persons	27,644,462	129,970	37,661,864	140,279	20,676,631	140,279
General Assistance	Average Monthly Persons	3,824,373	2,394	3,024,000	1,924	-	-
Refugee Assistance	Average Monthly Persons	239,749	52	280,800	55	290,400	55
Rehabilitation Services (RS)							
Vocational Rehabilitation	Average Monthly Persons	20,501,983	9,890	23,738,717	10,277	25,012,395	10,963
Blind and Visually Impaired Services	Annual Persons	1,722,316	999	853,274	2,018	866,073	2,756
Disability Determination	Annual Claims Processed	14,561,564	39,981	16,082,982	40,500	16,489,274	40,500
RS Centers for Independent Living Grants	Annual Persons Served	2,655,030	19,177	2,591,208	16,391	2,142,720	16,391

# - FY 2011 includes one-time ARRA funding