

FEBRUARY 12, 2025

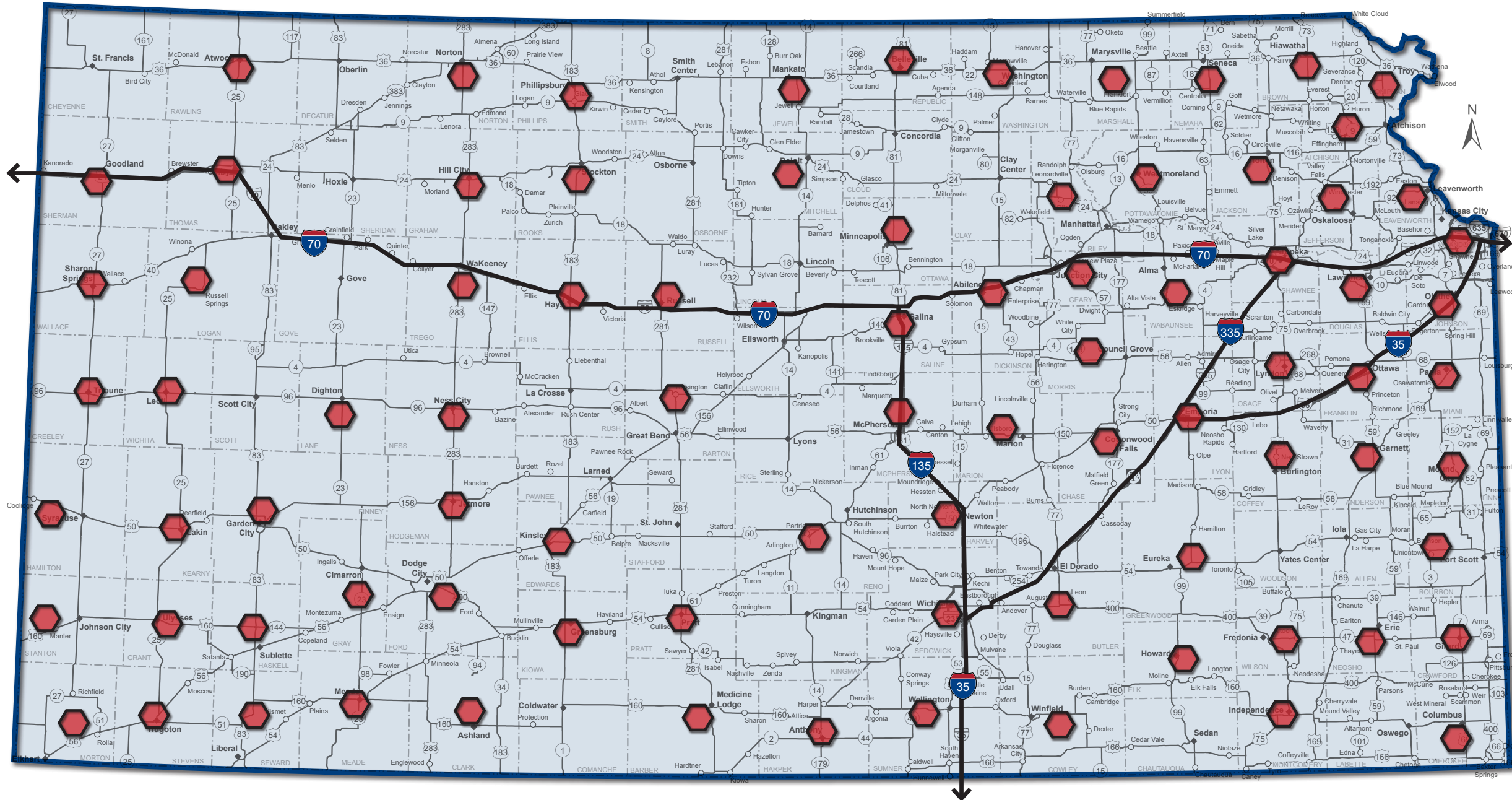
**TESTIMONY REGARDING A FUTURE INTERCHANGE FOR  
KRIS NORTON AS PROPOSED IN HOUSE BILL NO. 2263**

PRESENTATION TO  
THE HOUSE TRANSPORTATION COMMITTEE

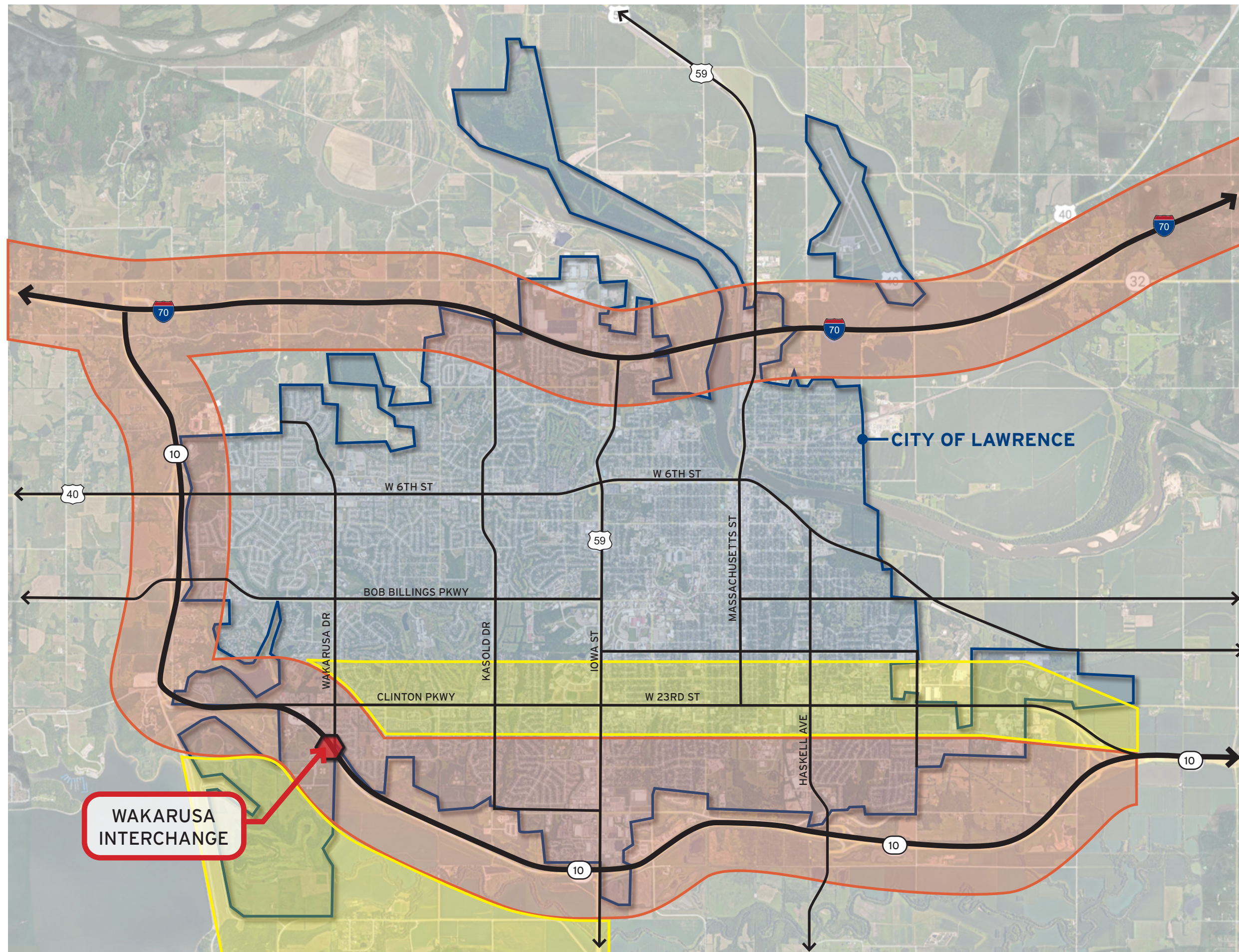
In Kris's 33 years with KDOT, he led and/or participated in over 270 projects across the state, touching 86 out 105 counties.

Kris's reach was far in terms of projects, helping shape Kansas infrastructure and address needed improvements. He took seriously his responsibility in serving the public and promoting a KDOT that listened to the needs of communities.

Not only were his projects far reaching, but Kris considered mentoring others essential to his role. Kris taught a generation of engineers and technicians the KDOT way in serving communities.







Orange shaded areas points to safety, operations, and improvements along the SLT that leads to better operations on the KTA, and future growth opportunities in the immediate vicinity of the SLT.

Additionally, the SLT improvements relieve congestion and operational issues along 23rd Street, the main E-W route in Lawrence. This provides a better quality of life and travel times along local routes.

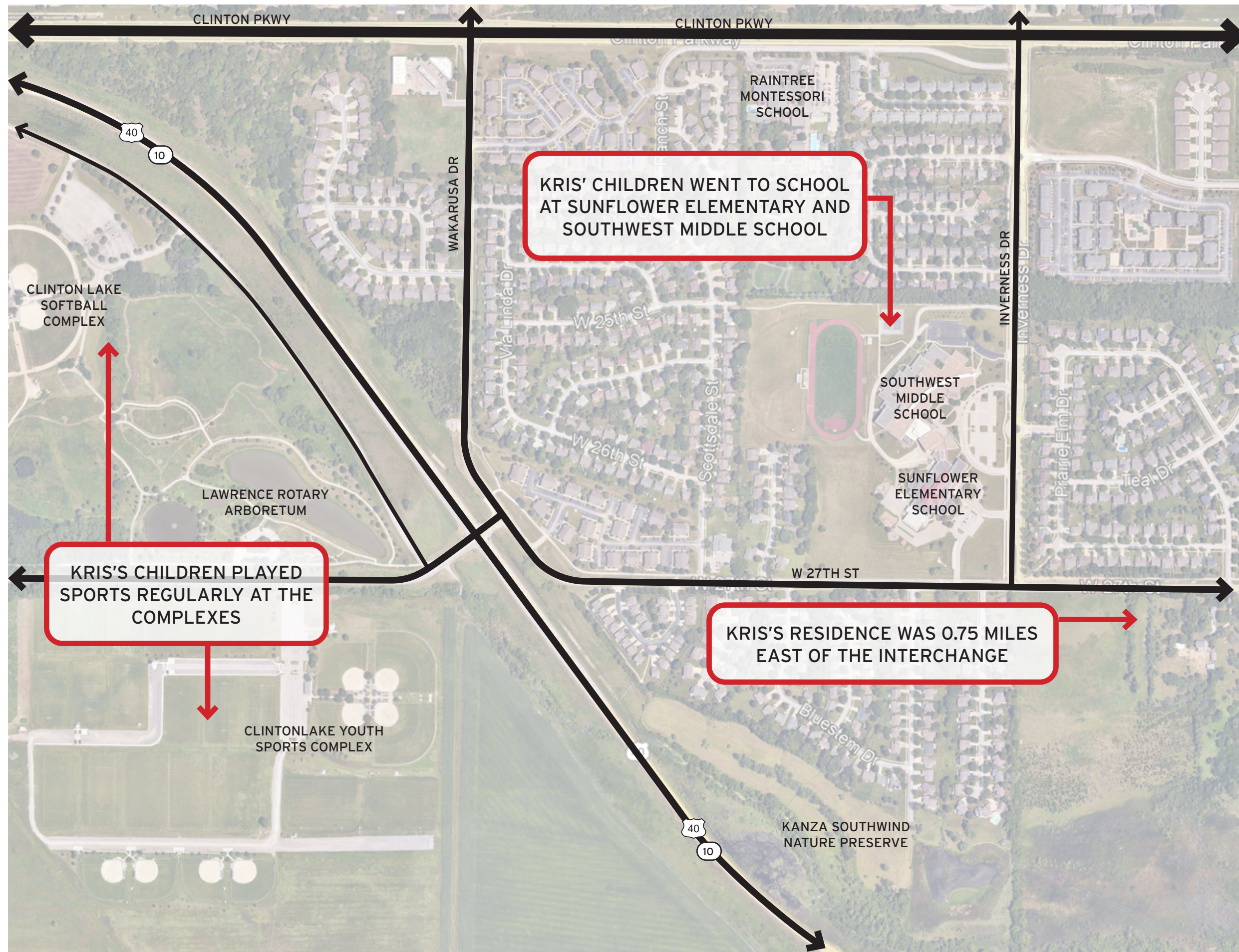
And the SLT has allowed for the possibility to reconnect with areas of the county south of the SLT to promote connectivity between recreational areas, better access emergency services, etc.

While SLT is likely the most significant project impact to the Lawrence community of Kris's career, he also led the 23rd Street bridge replacement project near Haskell Indian Nations University.

Kris was tied to the Lawrence community beyond projects as he was instrumental in promoting KU's Innovation Campus, helping KDOT become a founding tenant. He also served seniors through Meals on Wheels helping support some of Lawrence's most vulnerable citizens.

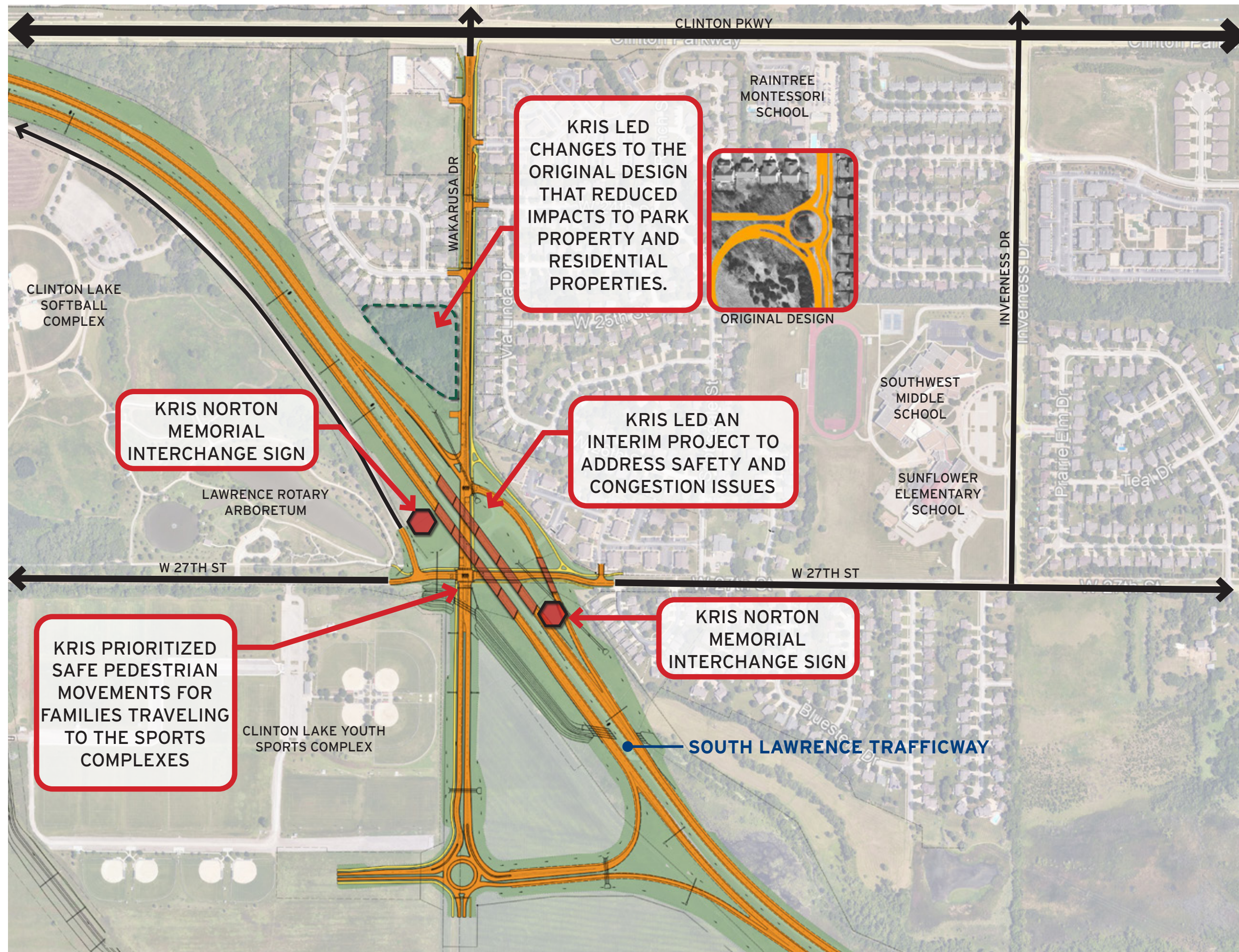
## KRIS NORTON MEMORIAL - SOUTH LAWRENCE TRAFFICWAY'S IMPACT ON LAWRENCE





**KRIS NORTON MEMORIAL - PERSONAL CONNECTION TO WAKARUSA INTERCHANGE**





Kris Norton had a tremendous impact on the design of the Wakarusa Interchange in Lawrence, KS. Kris personally experienced the challenges of the existing intersection through numerous trips and was committed to the urgent need for a safer interchange due to its history of accidents.

Recognizing the original design's potential impact on nearby residents, Kris took the initiative to advocate for a more community-friendly approach. His leadership and dedication were instrumental in ensuring the interchange's final design met the needs and concerns of the public.

## KRIS NORTON MEMORIAL INTERCHANGE

South Lawrence Trafficway - West | Lawrence, Kansas