

Services for Adults and Children with Special Needs

Making a Mean

HOUSE AGING & LTC

DATE: 1/25/11

ATTACHMENT # 5

Community Living Services



Family Teaching Model

CLO designed the Family Teaching Model to produce 11 key, positive outcomes for each individual who receives services. CLO has long considered these outcomes to be the foundation of all of our programs and services.

In family teaching homes, four or fewer people with developmental disabilities live on one side of a duplex or attached-home arrangement. Their living space includes various accessibility and safety features. A married couple, called a family-teaching couple, occupies the adjoining living space with their own immediate family members. The living spaces are connected via a common door or hallway for easy, quick access.

The family teachers provide most of the care and arrange for additional support services for the people they serve,

ensuring that each individual's needs are met. Family teachers are also trained and encouraged to build positive and lasting relationships with those individuals and families or guardians.

Extended Family Teaching Model

The Extended Family Teaching Model is like adult foster care in some respects, only better. A specially-trained person or couple opens their own home and extends their family life to someone in need – in this case, one or two individuals with developmental disabilities. CLO's extended family-teaching arrangements are intended to be long-term and often evolve from pre-existing positive relationships. An individualized service contract is developed between the extended family teachers and the individuals they serve (and their families/guardians), specifying desired outcomes that address needs and lifestyle preferences.

Day Services, Wellness Services

Day Services

CLO's Day Services program focuses on teaching adults with disabilities ways to live, work and participate more fully in their communities. Recreational activities provide opportunities for individuals to express themselves through hobbies, sports and other interests. Opportunities for work and even outside employment help individuals develop pride and self-worth. Excursions in the community help individuals stay connected with friends and the world around them. All of these activities set occasions to teach appropriate socialization and other life skills.



Wellness Services

CLO meets the often significant health-care needs of the individuals we serve through on-site Wellness Clinics. CLO's nursing staff, along with visiting nurse practitioners and physicians, conduct wellness assessments and provide preventive health care with a focus on catching health concerns early and closely monitoring each individual's health needs. CLO's Wellness Clinics provide a familiar, comfortable setting for exams and certain health-care procedures. CLO also provides on-site occupational and physical therapy.

Children's Services

Early Childhood Autism Program

CLO's Early Childhood Autism Program (ECAP[®]) has specially-trained consultants to conduct assessments and then develop individualized teaching and behavior support programs for children with autism spectrum disorders. Parents benefit, too, learning educational and therapeutic terminology, teaching strategies to use at home, and communication and negotiation skills.

ECAP's Early Intensive Behavioral Intervention program offers intensive, one-on-one intervention, helping children reach developmental milestones.

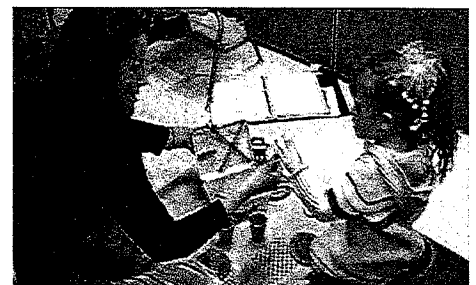
Positive Behavior Supports

The Positive Behavior Supports program helps families in the community who are struggling with a child's challenging behaviors. A qualified consultant analyzes problem behavior in context to discover possible causes and develops a multi-component, positive intervention to reduce the behavior and teach new skills, thus enhancing the overall quality of life for whole family.

Child Placement

CLO is licensed as a Child Placement Agency to help children with disabilities

(infants to age 18) who need more care than some biological families can provide. CLO's full array of supports, lifespan services, and clinical staff are available at any time to meet the child's needs.



Targeted Case Management

CLO's targeted case managers serve as the facilitators of individuals' support teams, enabling and ensuring that each individual obtains and benefits from the variety of services and supports available from CLO, as well as those offered by other community providers and government resources.

CLO's well-qualified and dedicated case managers are committed to achieving high quality outcomes for individuals who have developmental disabilities and their families by:

- Assessing needs and lifestyle preferences.

- Providing transition planning to promote success in new environments.
- Facilitating the person-centered support planning process, (called a Quality of Life Plan (QLP) at CLO).
- Pursuing resources, funding, services and supports to meet the needs, interests, goals and preferences of the individual.
- Evaluating the quality of services provided and acting to achieve desired outcomes.
- Serving as a liaison with families and guardians, ensuring effective communication.



Midnight Farm



Midnight Farm, located seven miles south of Eudora, Kansas on 40 acres of scenic farmland, offers opportunities for people with special needs to live, work, relax, and pursue recreational activities in the natural beauty of the Douglas County countryside.

Activities revolve around Midnight Farm's 22,000-square-foot multi-purpose facility that is fully accessible for people with disabilities. It includes a rustic meeting lodge with a cozy stone fireplace and a fully equipped kitchen, a guest bunkhouse, an indoor equestrian arena (home of a NARHA-certified therapeutic horseback riding program), and a general purpose barn. Spilling out from the barn in every direction are paddocks and petting areas for gentle farm animals, walking and riding trails, picnic spots, a fire pit and outdoor theater, flower gardens and specialty crop growing areas.

CLO offers a variety of day services at Midnight Farm, including camps and field trips, for people with special needs. Community groups and the public at large are welcome to volunteer, enjoy the farm's amenities, buy products, and more.



HomeLink

CLO developed HomeLink to use the latest in technology to bring "on-demand" support directly into the homes of people with disabilities. An integrated system of video cameras and other monitoring devices gives specially trained personnel remote access to the home, be it on the other side of town, in another state, or across the country. HomeLink makes it possible to:

- Determine when an individual in a home setting needs help and immediately dispatch a support staffer.
- Remotely supervise awake-at-night staff to make sure they're on task,



and that the individuals they serve are safe and getting proper care.

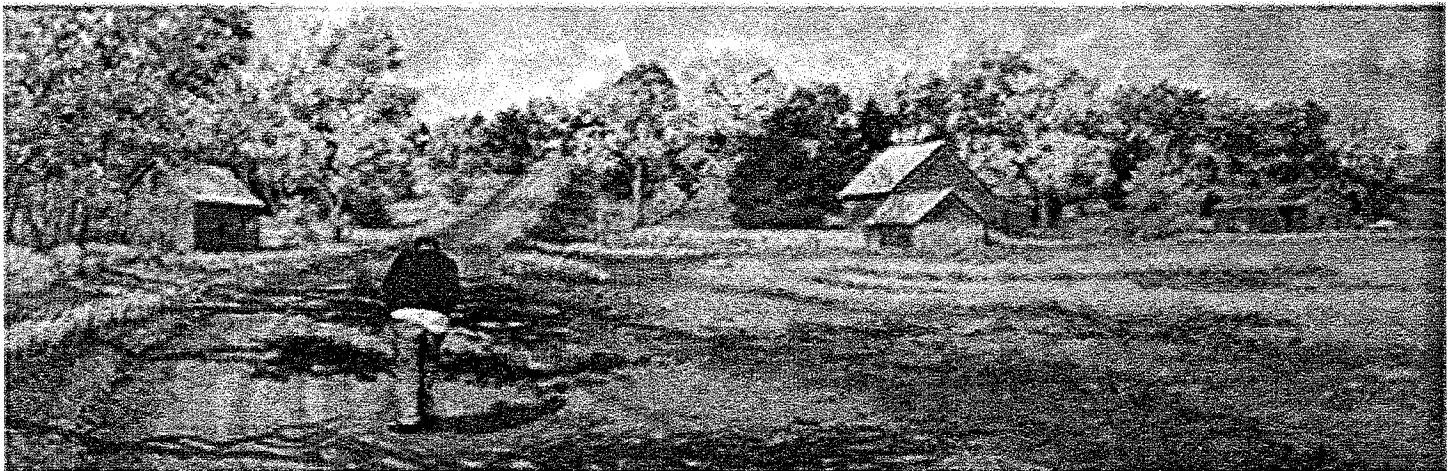
- Let a health-care provider make multiple "house calls" to consult with home-based staff, check on a patient, or remotely collect data like temperature, weight, blood pressure, oxygen levels, and more.
- Monitor individuals with seizure disorders and respond at the first observable signs of a seizure.
- Allow a certified behavior analyst to observe and evaluate behavioral concerns in their natural settings.

CLO's Mission: Make a Meaningful Difference for People with Developmental Disabilities

Community Living Opportunities (CLO), Inc. is a not-for-profit organization formed in 1977 in Johnson County, Kansas by a group of parents who wanted people with developmental disabilities, no matter how severe, to live fulfilling lives in the community. CLO was among the pioneers of community-based developmental disability services for people with more challenging needs and soon became a leader in developing and implementing unique and effective service models. From the start, CLO's advisors and consultants included key faculty and graduate students from the Department of Applied Behavioral Science at the University of Kansas, who have been instrumental in creating CLO's Quality of Life planning process, Family Teaching Model, Extended Family Teaching Model, Early Childhood Autism Program (ECAP®), and more.

CLO's services have always been based on dignity and respect, with a family-style atmosphere in the home setting, opportunities for choice, an emphasis on teaching, positive reinforcement, and as much independence as possible. CLO believes in active family involvement. In fact, family members or guardians of the people we serve make up the majority of our board of directors.

CLO provides a full spectrum of lifespan services for more than 400 children and adults with special needs, primarily in eastern Kansas. Among our services are community living, day services, behavioral consultation, targeted case management, children's services, and health-care supports. CLO also embraces the value of best practices and sharing ideas. Nonprofit organizations patterned after CLO provide services in south-central Kansas, Tennessee, and California.



The title of this original watercolor, *Life is a Very Steep Hill*, exemplifies the life of its subject, my son, Jim Duncan. Jim was born in 1959, when services for Kansans with mental retardation and other developmental disabilities were still in the dark ages. CLO was one of the very earliest community residential care providers to emphasize quality of life for its clients. At CLO, Jim found a group of dedicated people who worked him through an eight-person group home, to a three-person apartment, to a Family-Teaching Model home, to an Extended Family-Teaching Model arrangement where, finally, he was living in his own apartment. Every step up the very steep hill of life advanced him on the road to a good life.

Ellen Duncan, artist



CLO

Visit us on the web:

www.clokansas.org

In Johnson County:

11627 W. 79th Street
P.O. Box 14395
Lenexa, Kansas 66285-4395
Phone: 913-341-9316
Fax: 913-341-7077

In Douglas County:

2113 Delaware Street
Lawrence, Kansas 66046-3149
Phone: 785-865-5520
Fax: 785-865-5695

In Southeast Kansas:

11627 W. Madison Street
P.O. Box 748
Iola, Kansas 66749-0748
Phone: 620-365-7119
Fax: 800-232-7051