

# Kansas Army National Guard

## Facilities Maintenance and Repair

Joint Committee on State Building Construction  
October 24, 2018  
Attachment 4

## FY 2019 Planned Budget:

Maintenance Activities	State Cost	Federal Cost
Life, Health and Safety	\$1,433,118	\$4,299,353
Sustainment Repairs	\$1,627,846	\$1,627,846
TOTALS:	\$3,060,964	\$5,927,199

**Life, Health and Safety:** Improvements determined by federal, state, and local requirements- building code and regulatory compliance

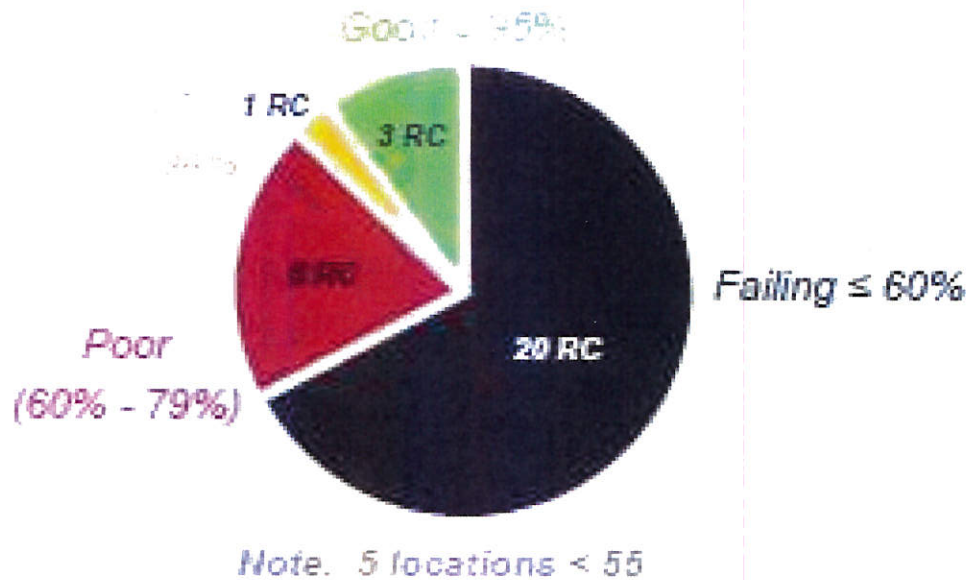
- FY2019 focus is installation of fire suppression systems in National Guard Readiness Centers
  - Requirements for overnight occupancy from National Fire Protection Association (NFPA) 101
    - 52% of Soldiers commute greater than 50 miles to duty location
    - 31% of Soldiers commute greater than 100 miles
  - National Guard Readiness Centers are available to support 24 hour operations in crisis response, and as temporary community shelters following disasters.
- Projects in this category have a 75% Federal and 25% State funding split

**Sustainment Repairs:** Investments needed to bring the facility and associated infrastructure into conformance with generally applied standards and minimal requirements of good general maintenance

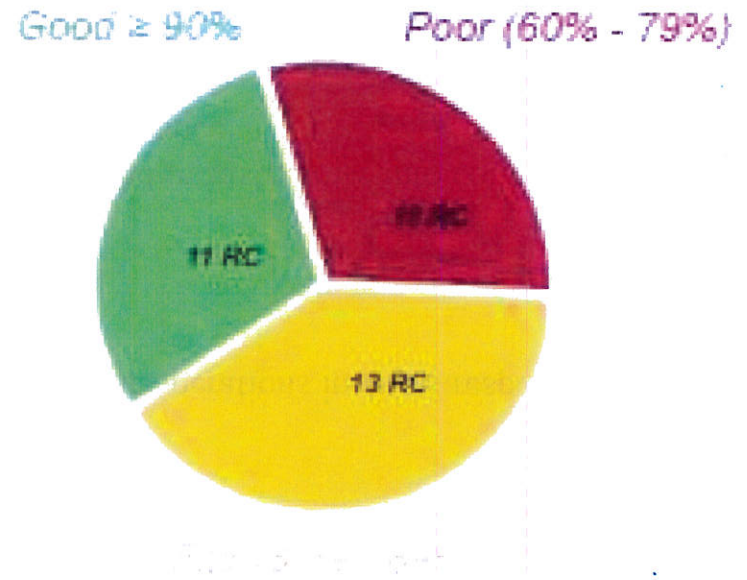
- FY2019 focus is responding to urgent requirements identified in statewide Installation Status Report deficiencies and facilities assessments complete external professional engineering firm
  - Examples of work
    - Site security, drainage, and accessibility
    - Building exterior repair to prolong useful life and save energy cost
    - Building interior repairs to repair original functionality, appearance, and reduce operating costs
- Projects in this category have a 50% Federal and 50% State funding split

# Kansas Army National Guard Readiness Center Portfolio Installation Status Report

Space Requirements Met:



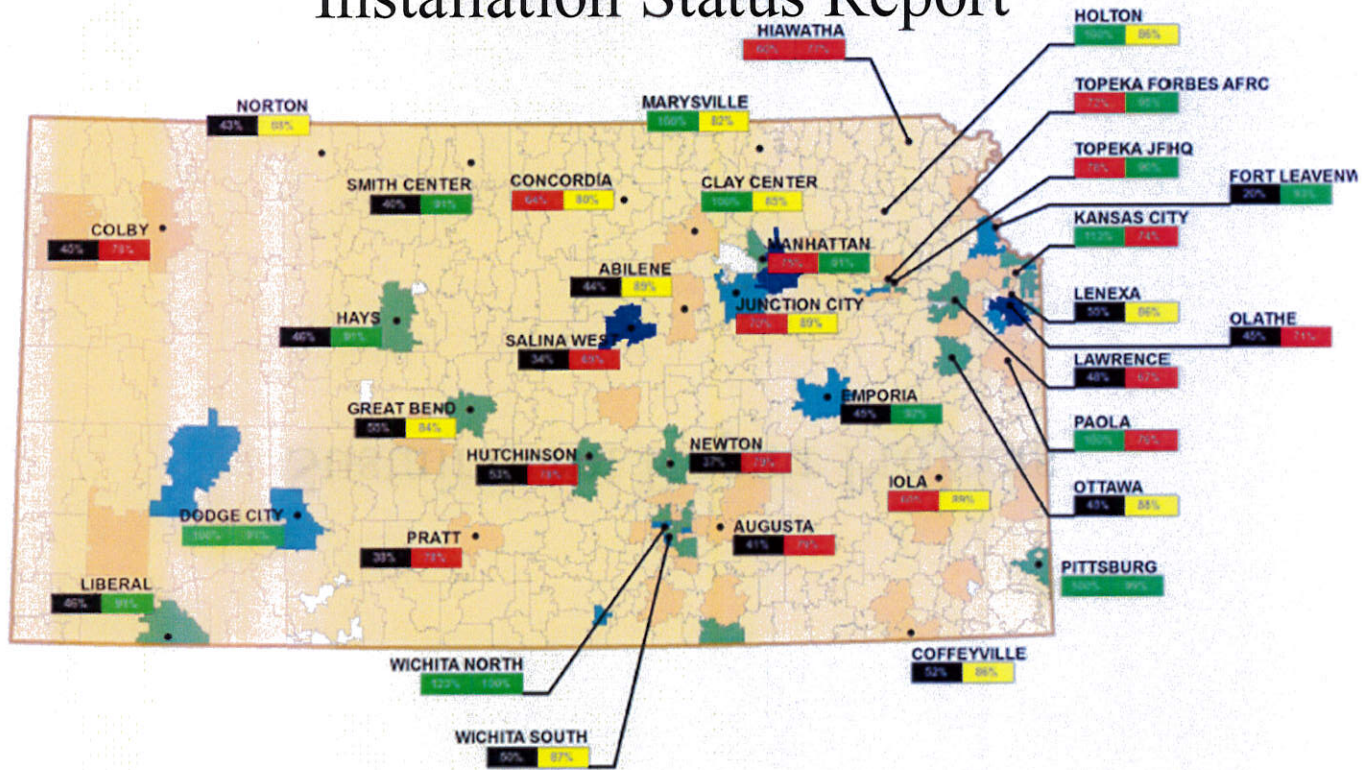
Condition Index Ratings



h-4

# Kansas Army National Guard Readiness Center Portfolio Installation Status Report

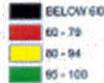
16



RC LOCATION



TAB



FCA



KS\_DEM\_CS\_HS\_ZIP

TARGET\_30



4-5

# Sustainment Repair Projects

4-6

## Abilene Readiness Center (Site)



### Site Improvements (20% of Repair Cost):

- Replace sidewalks
- Improve site, parking, and military motor vehicle storage compound, - drainage, grade, and gravel.



## Abilene Readiness Center (building exterior)



### Exterior Repairs (30% of Repair Cost):

- Re-seal control joints, windows and doors
- Replace site signage
- Repair roof, flashing and downspouts





## Abilene Readiness Center (building interior)



### Interior Repairs (50% of Repair Cost):

- Replace vinyl, carpet and ceramic floors
- Replace acoustic ceiling tile
- Upgrade plumbing fixtures (lavatories, faucets, showers) to low flow for reduced resource consumption



## Emporia Readiness Center (Site)



### Site Improvements (42% of Repair Cost):

- Replace perimeter fence
- Improve site, parking, and military motor vehicle storage compound, - drainage, grade, and gravel
- Replace sidewalks, drives, and street approaches



## Emporia Readiness Center (building exterior)



### Exterior Repairs (15% of Repair Cost):

- Re-seal control joints/windows/doors
- Tuck pointing brick face (repair mortar joints)
- Repair roof, flashing and downspouts
- Repaint exterior garage and walk-thru doors



## Emporia Readiness Center (building interior)



### Interior Repairs (43% of Repair Cost):

- Resurface and Replace floor finishes
- Paint interior doors and window frames
- Patch and paint walls
- Replace ceiling acoustical tile
- Replace water heater, and major HVAC components



## Hays Readiness Center (site)

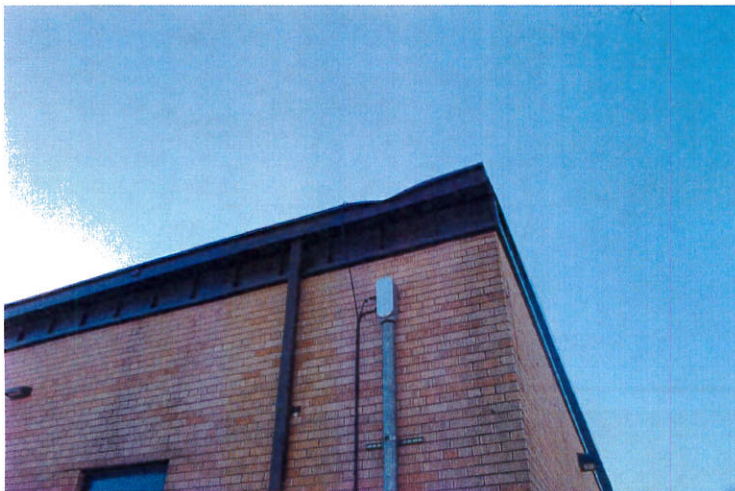


### Site Improvements (45% of Repair Cost):

- Replace perimeter fence
- Improve site, parking, and military motor vehicle storage compound, - drainage, grade, and gravel
- Replace sidewalks, drives, and street approaches



## Hays Readiness Center (building exterior)



### Exterior Repairs (23% of Repair Cost):

- Re-seal control joints/windows/doors
- Tuck pointing brick face (repair mortar joints)
- Repair roof, flashing and downspouts
- Repaint exterior garage and walk-thru doors



h1-h

## Hays Readiness Center (building interior)



### Interior Repairs (32% of Repair Cost):

- Resurface and Replace floor finishes
- Paint interior doors and window frames
- Patch and paint walls
- Replace ceiling acoustical tile



## Hiawatha Readiness Center (site)



### Site Improvements (9% of Repair Cost):

- Replace perimeter fence
- Improve site, parking, and military motor vehicle storage compound, - drainage, grade, and gravel
- Replace sidewalks, drives, and street approaches



4-16

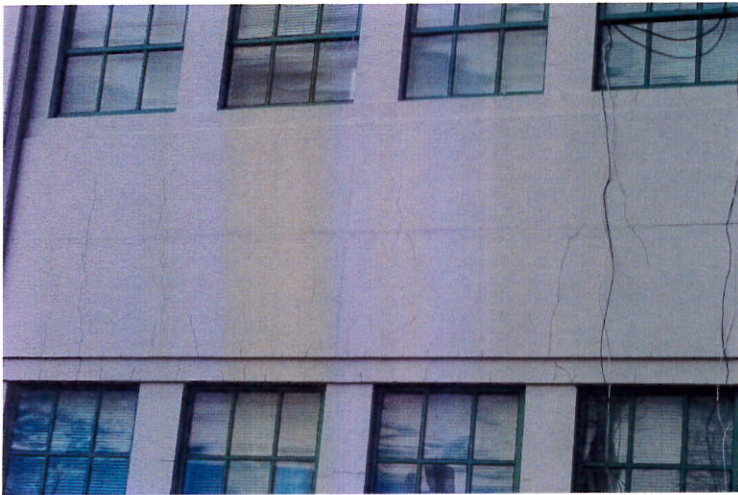


Hiawatha Readiness Center (building exterior)

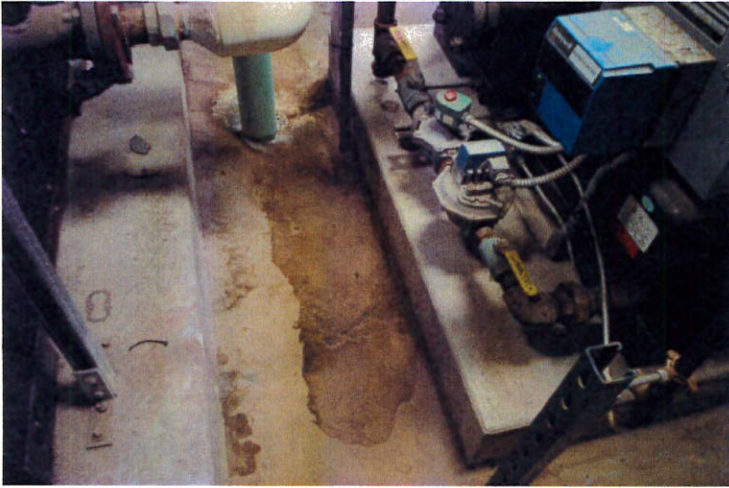


Exterior Repairs (4% of Repair Cost):

- Crack sealing and painting
- Historic building – Finishes must be approved by State Historic Preservation Office

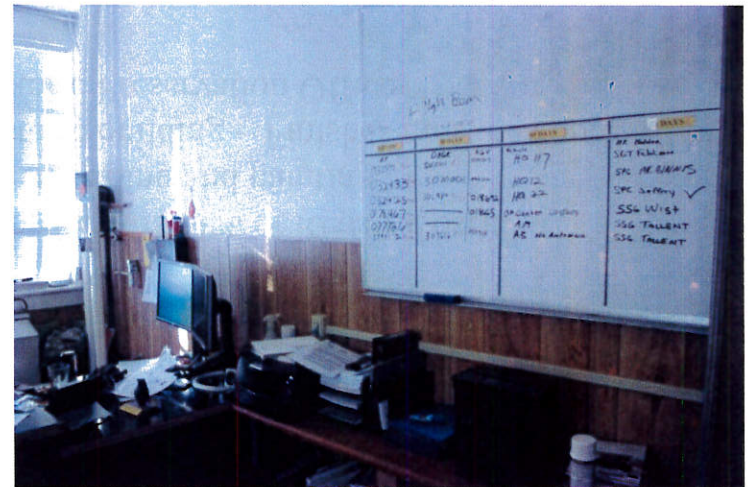


## Hiawatha Readiness Center (building interior)



### Interior Repairs (87% of Repair Cost):

- Resurface and replace floors coverings
- Replace ceiling acoustical tile
- Patch and paint walls, paint door and window frames
- Replace water heater and major HVAC components
- Historic building – Finishes must be approved by State Historic Preservation Office



## Holton Readiness Center (site)



### Site Improvements (52% of Repair Cost):

- Replace asphalt roads and parking areas
- Improve site, parking, and military motor vehicle storage compound, - drainage, grade, and gravel
- Replace sidewalks, drives, and street approaches



Holton Readiness Center (building exterior)

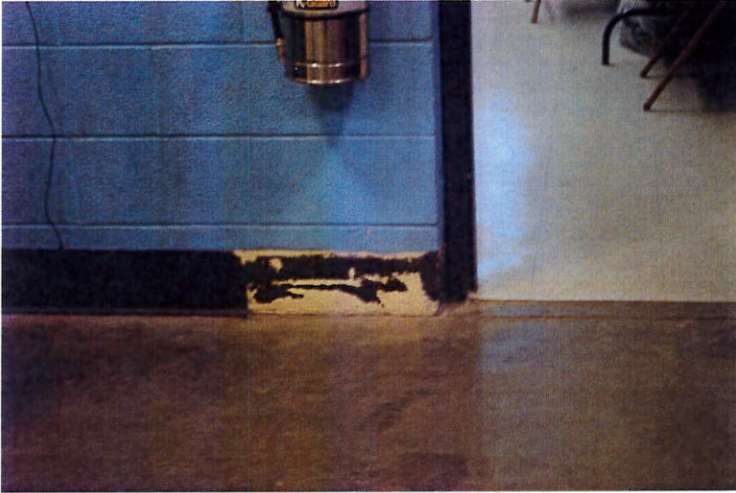


Exterior Repairs (28% of Repair Cost):

- Replace perimeter fence
- Tuck pointing brick face (repair mortar joints)
- Repair roof, flashing and downspouts
- Improve site, parking, and military motor vehicle storage compound, - drainage, grade, and gravel
- Replace sidewalks, drives, and street approaches



## Holton Readiness Center (building interior)

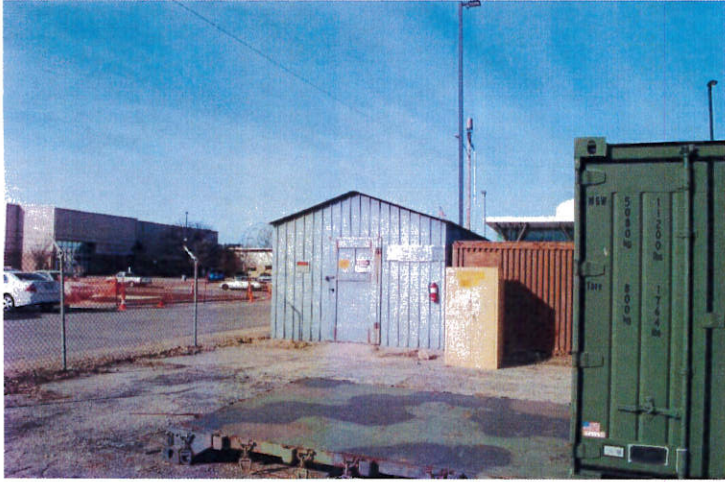


### Interior Repairs (20% of Repair Cost):

- Resurface and Replace floor coverings
- Paint interior doors and window frames
- Patch and paint walls
- Replace ceiling acoustical tile
- Replace interior coiling doors with panel or hinge doors
- Replace major HVAC components



## Hutchinson Readiness Center (site)



### Site Improvements (51% of Repair Cost):

- Replace asphalt roads and parking areas
- Improve site, parking, and military motor vehicle storage compound, - drainage, grade, and gravel
- Replace sidewalks, drives, and street approaches



## Hutchinson Readiness Center (building exterior)



### Exterior Repairs (16% of Repair Cost):

- Replace metal signs and paint parking bollards
- Re-seal control joints, windows and doors frames
- Paint exterior windows frames, garage and walk-thru doors
- Tuck point brick face (repair mortar joints)



## Hutchinson Readiness Center (building interior)



### Interior Repairs (33% of Repair Cost):

- Resurface and Replace floor finishes
- Paint interior door and window frames
- Replace interior coiling doors with panel or hinge doors
- Replace ceiling acoustical tile
- Replace select plumbing piping and insulation
- Replace plumbing fixtures with low flow for lavatories, sinks, showers

